

Small Size (50mm) >ASS< Quick Changers

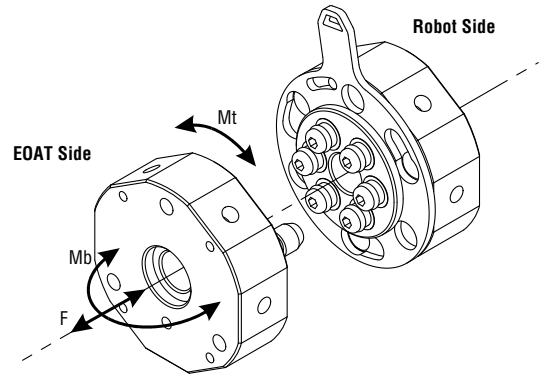
(Dimensioned drawing shown full scale)



NEW

#3816 - Small EOAT-Side Quick Changer

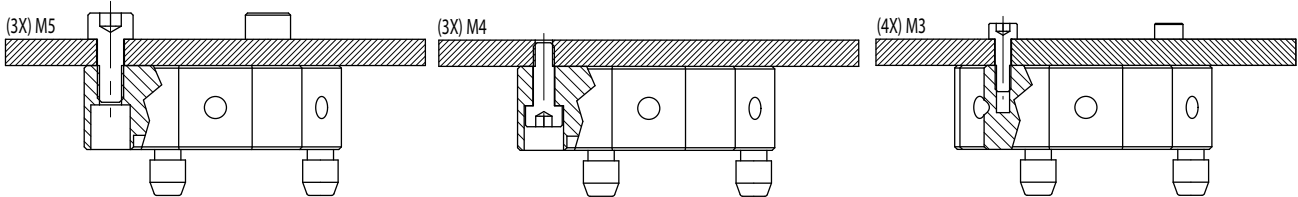
- For EOATs that are typically mounted on sprue pickers, tabletop SCARA robots, cobots, or used on IMMs sized up to 100 tons.
- This will generally handle EOATs weighing up to 11 lbs.
- Please consult with EOAT engineering for proper sizing to your application needs.
- Need to add more air circuits? Pneumatic Interface Expansion Modules available online, Quick #3933, #3934.



Specifications for Small Size Quick Changer		
Weight	Robot-Side	68g
	EOAT-Side	95g
Maximum Air Pressure	6 bar (87psi)	
Air Ports	(6X) M5	
Electrical Connector	Optional - Adapter needed	
Safety Loads:		
F 33 lbs.	Mt 14 ft-lbs.	Mb 7 ft-lbs.

F= Axial Load Limit Mt= Torque Moment Limit
Mb= Bending Moment Limit

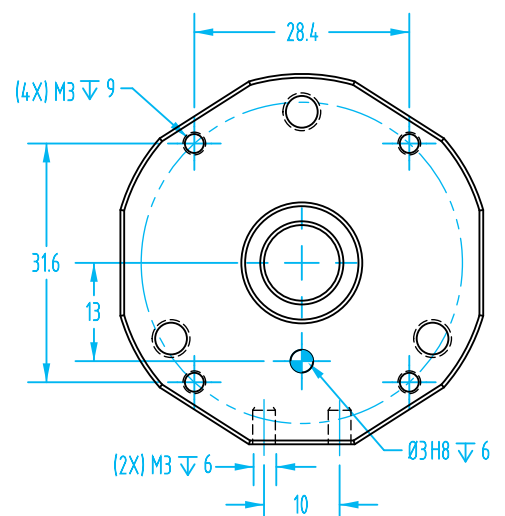
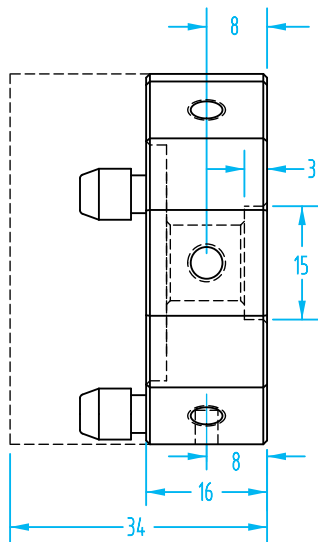
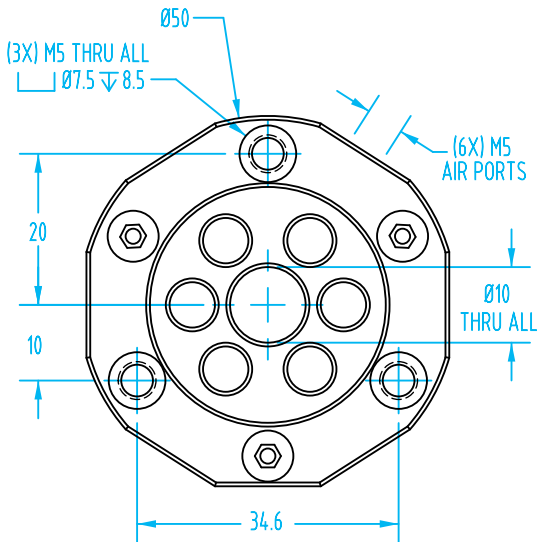
The EOAT-Side Quick Changer can be mounted three ways:



1. Use threaded M5 holes in the Quick Changer, and use 5.3mm thru holes in your EOAT tooling plate.

2. Use the threaded M5 holes as 4.2mm thru holes and use M4 threaded holes in your EOAT tooling plate.

3. Use threaded M3 holes in the Quick Changer, and use 3.4mm thru holes in your EOAT tooling plate.



Small Size (50mm) >ASS< Quick Changers

(Dimensioned drawing shown full scale)

Small Size Quick Changers

Quick#	Part#	>ASS< #	Description	Price
3815	SWH-R-50	1-020-05-00	Robot-Side - Small size (50mm)	\$208.95
3816	SWH-G-50	1-021-05-00	EOAT-Side - Small size (50mm)	\$103.95
502	WGS-QLEKRD	Robot-Side Electrical Connector & Cable		\$81.00
503	WGS-QLEKGD	EOAT-Side Electrical Connector & Cable		\$81.00
3836	SWH-DS-50	1-025-05-00	Spacer for Electrical Connectors	\$22.58

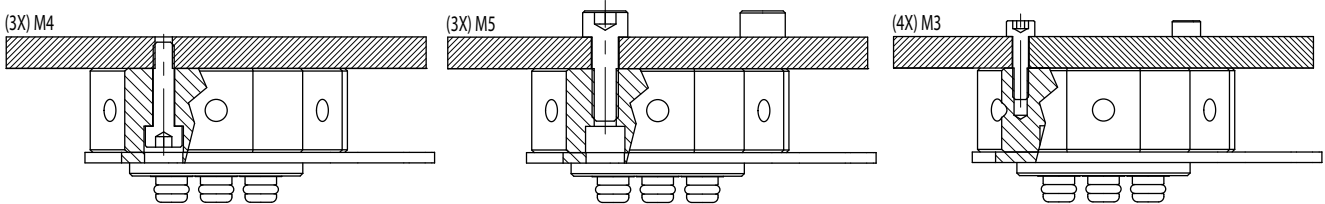
Additional Electrical Connectors available on page 30.



#3815 - Small Robot-Side Quick Changer

NEW

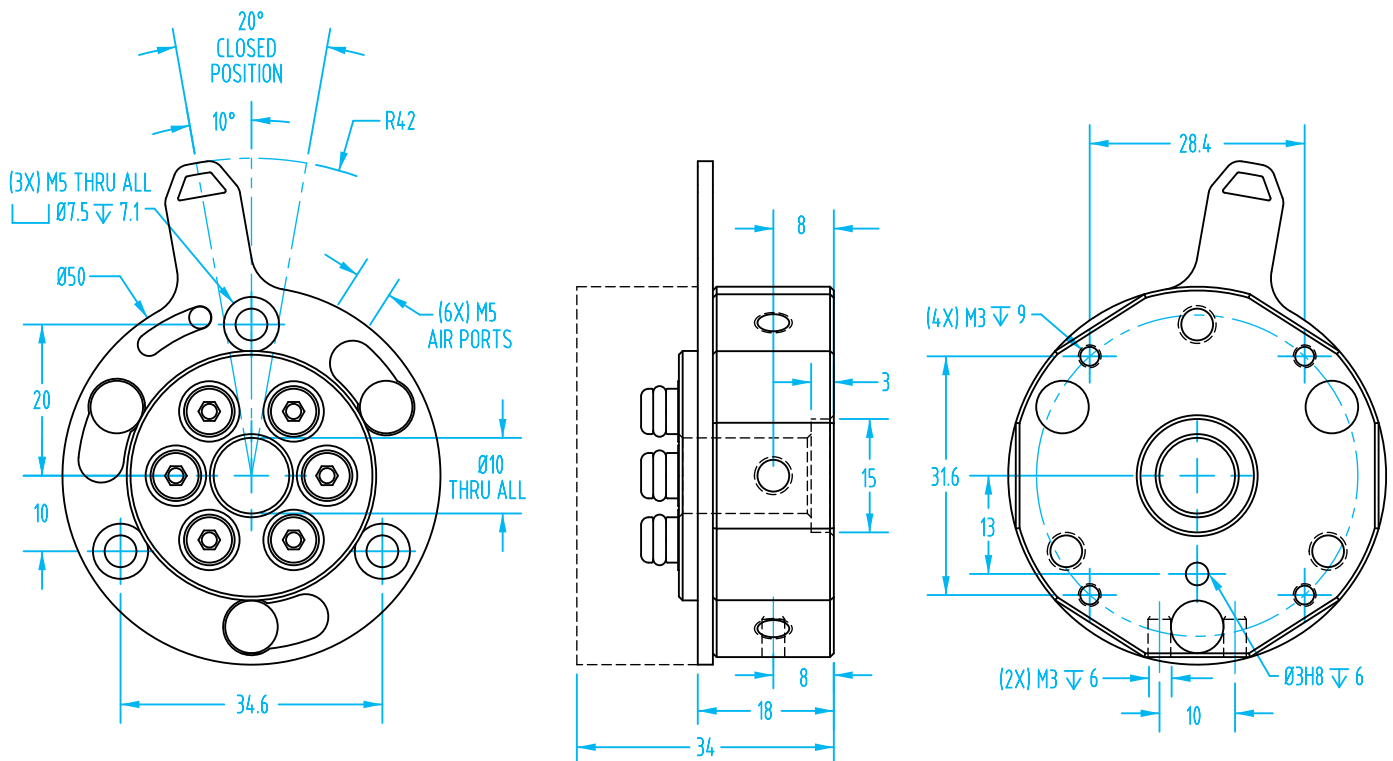
The Robot-Side Quick Changer can be mounted three ways:



1. Use threaded M5 holes in the Quick Changer, and use 5.3mm thru holes in your robot tooling plate.

2. Use the threaded M5 holes as 4.2mm thru holes. Tap M4 threaded holes in your robot tooling plate.

3. Use threaded M3 holes in the Quick Changer, and use 3.4mm thru holes in your robot tooling plate.



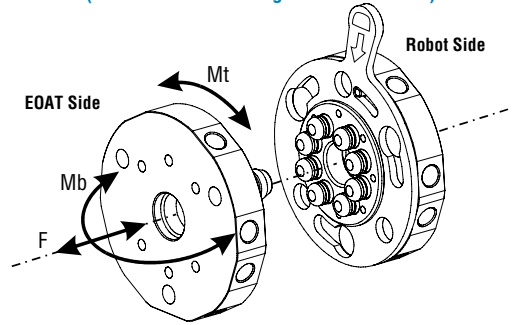
Standard Size (90mm) >ASS< Quick Changers

(Dimensioned drawing shown full scale)



#3818 - Standard EOAT-Side Quick Changer

NEW

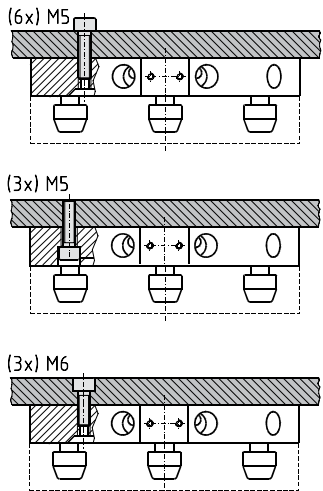


Specifications for Standard Size Q.C.		
Weight	Robot-Side	325g
	EOAT-Side	212g
Maximum Air Pressure	6 bar (87psi)	
Air Ports	(8X) G 1/8"	
Electrical Connector	Optional	
Safety Loads:		
F 90 lbs.	Mt 73 ft-lbs.	Mb 44 ft-lbs.

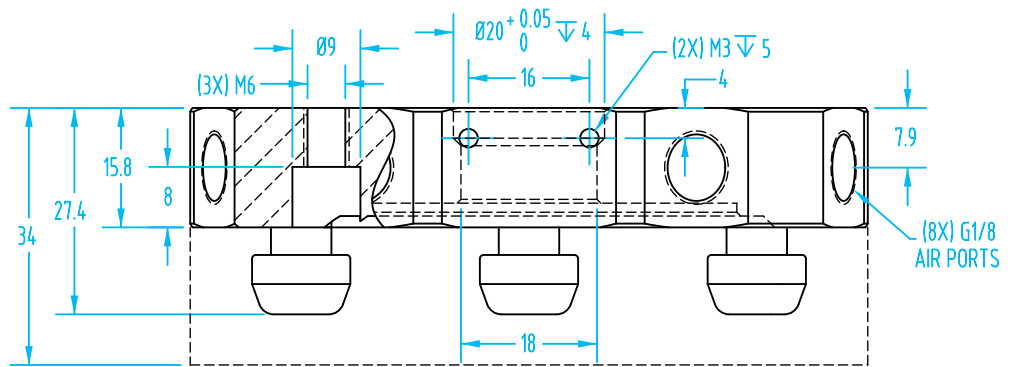
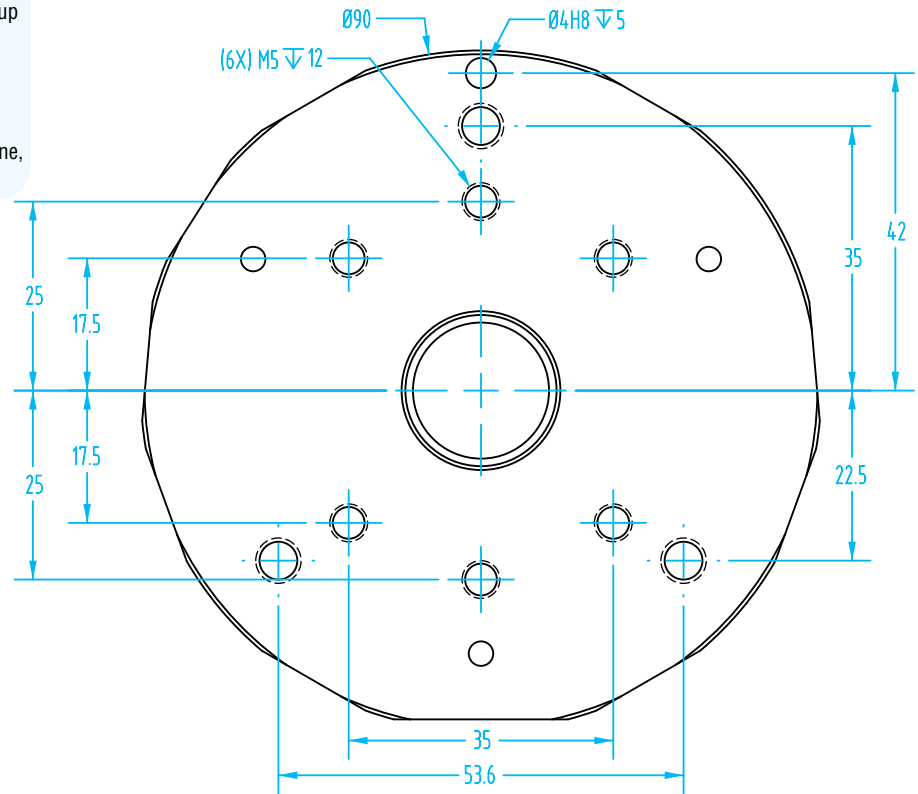
F= Axial Load Limit Mt= Torque Moment Limit
Mb= Bending Moment Limit

- For EOATs that are typically used on IMMs sized from 50 to 500 tons.
- This will generally handle EOATs weighing up to 44 lbs.
- Please consult with EOAT engineering for proper sizing to your application needs.
- Need to add more air circuits? Pneumatic Interface Expansion Modules available online, Quick #3933, #3934.

EOAT-Side Mounting



See page 40–43 for additional mounting adapters.



Standard Size (90mm) >ASS< Quick Changers

(Dimensioned drawing shown full scale)

Standard Size Quick Changers

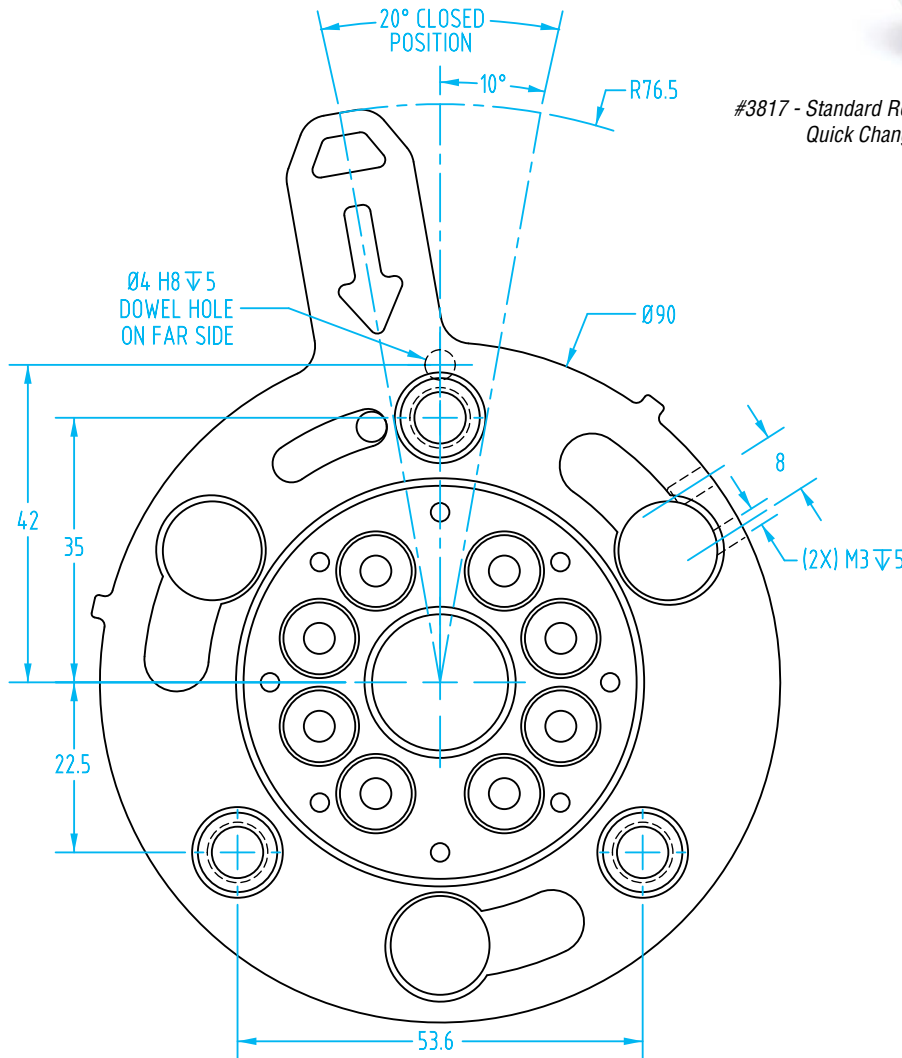
Quick#	Part#	>ASS< #	Description	Price
3817	SWH-R-90	1-020-09-00	Robot-Side - Standard size (90mm)	\$304.50
3818	SWH-G-90	1-021-09-00	EOAT-Side - Standard size (90mm)	\$194.25
502	WGS-QLEKRD	Robot-Side Electrical Connector & Cable		\$81.00
503	WGS-QLEKGD	EOAT-Side Electrical Connector & Cable		\$81.00
6545	QC90-H	Horizontal EOAT Storage Hanger (pg. 59)		\$32.86
5997	QC90-V	Vertical EOAT Storage Hanger (pg. 59)		\$32.86
3886	RHZ-SWH-R-90	1-026-09-00	Quick Changer Centering Pin	\$22.05

Additional Electrical Connectors available on page 30.



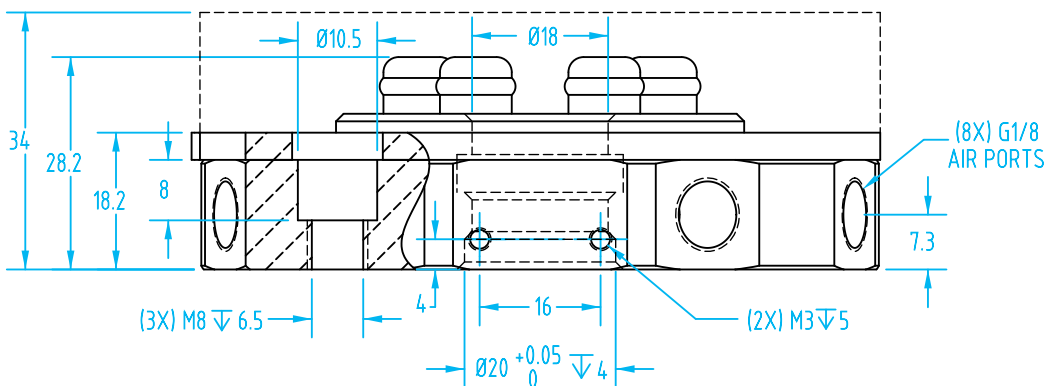
#3817 - Standard Robot-Side Quick Changer

NEW



Robot-Side Mounting

The robot-side quick changer can be mounted two ways: Use M6 when tapping into your robot plate from the front. Use M8 when making a thru hole in your robot plate to use the M8 threads in the quick changer.



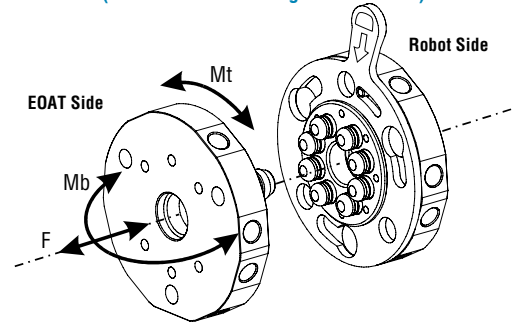
Large Size (150mm) >ASS< Quick Changers



#3832 - Large EOAT-Side Quick Changer

NEW

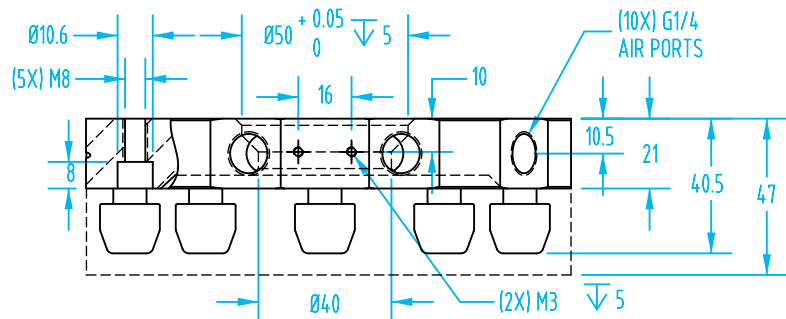
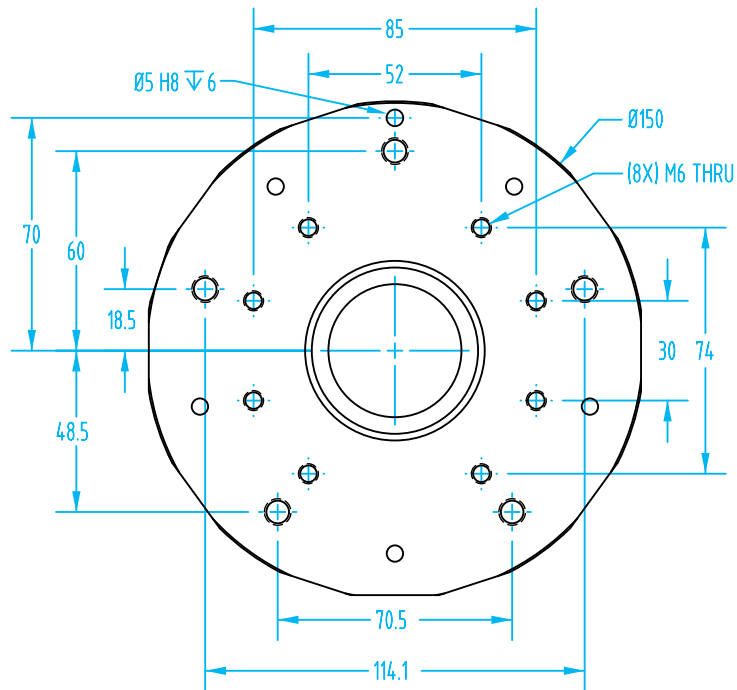
(Dimensioned drawing reduced to fit)



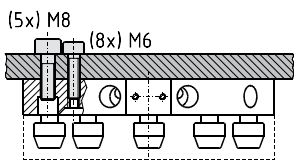
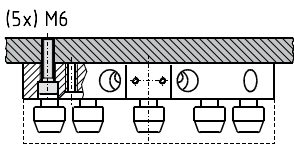
Specifications		
Weight	Robot-Side	1145g
	EOAT-Side	810g
Maximum Air Pressure	6 bar (87psi)	
Air Ports	(10X) G1/4"	
Electrical Connector	Optional	
Safety Loads:		
F 224 lbf.	Mt 184 ft-lbs.	Mb 73 ft-lbs.

F= Axial Load Limit Mt= Torque Moment Limit
Mb= Bending Moment Limit

- For EOATs that are typically used on IMMs sized from 500 to 2000 tons.
- This will generally handle EOATs weighing up to 88 lbs.
- Please consult with EOAT engineering for proper sizing to your application needs.
- Need to add more air circuits? Pneumatic Interface Expansion Modules available online, Quick #3933, #3934.



EOAT-Side Mounting



See page 44-45 for additional mounting adapters.

Large Size (150mm) >ASS< Quick Changers

(Dimensioned drawing reduced to fit)

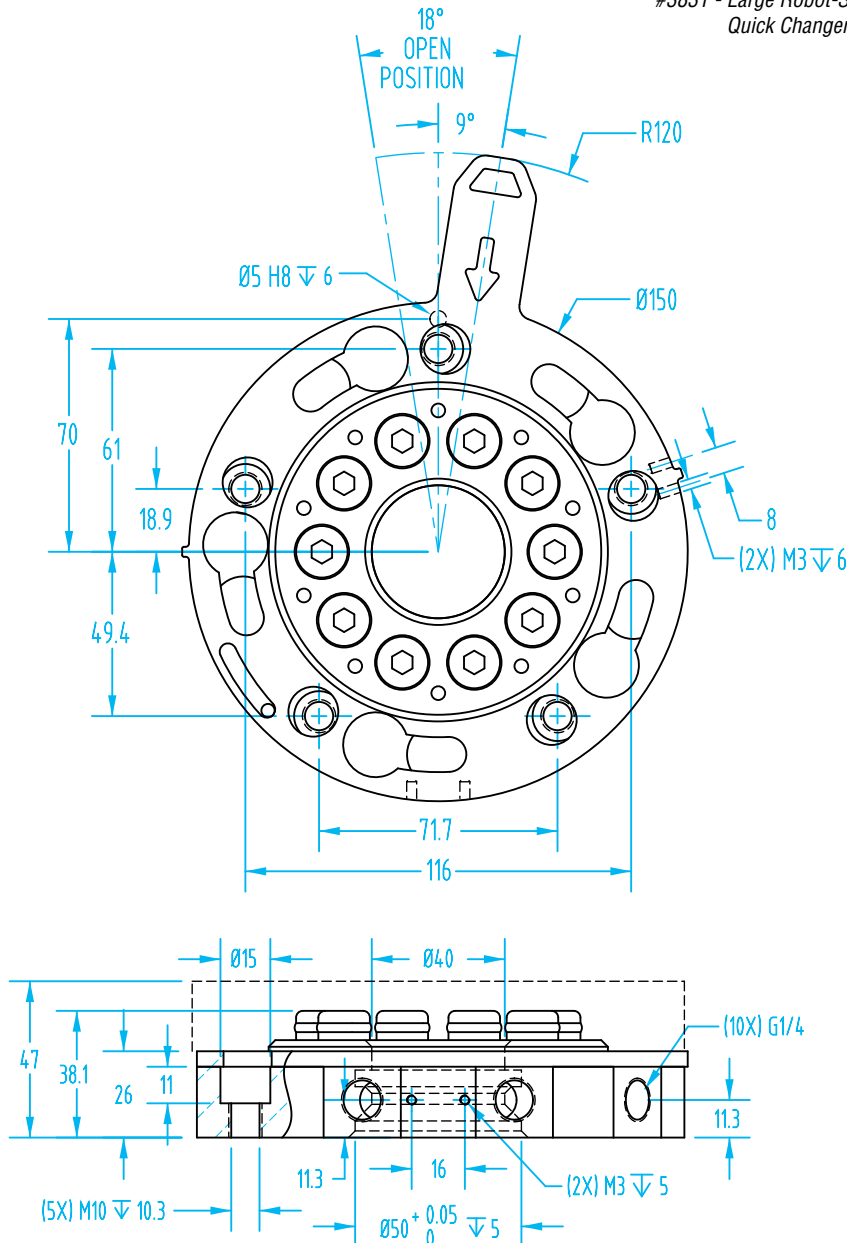
Large Size Quick Changers

Quick#	Part#	>ASS< #	Description	Price
3831	SWH-R-150	1-020-15-00	Robot-Side - Large size (150mm)	\$530.25
3832	SWH-G-150	1-021-15-00	EOAT-Side - Large size (150mm)	\$301.35
502	WGS-QLEKRD	Robot-Side Electrical Connector & Cable		\$81.00
503	WGS-QLEKGD	EOAT-Side Electrical Connector & Cable		\$81.00
3837	SWH-DS-150	1-025-15-00	Spacer for Electrical Connectors	\$22.58
6546	QC150-H		Horizontal EOAT Storage Hanger (pg. 60)	\$38.27
5998	QC150-V		Vertical EOAT Storage Hanger (pg. 60)	\$38.27
3887	RHZ-SWH-R-150	1-026-15-00	Quick Changer Centering Pin	\$25.20

The SWH-150.. needs an adapter (Quick# 3837) for electrical connectors.
Additional Electrical Connectors available on page 30.

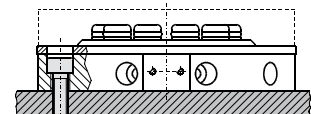


#3831 - Large Robot-Side Quick Changer



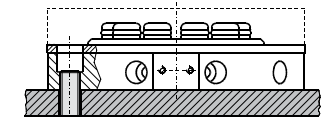
Robot-Side Mounting

You can use the holes in the quick changer as 8.5mm thru holes. Tap M8 threaded holes in your robot tooling plate.



(5x) M8

To use the threaded M10 holes in the quick changer, use 10.5mm thru holes in your robot tooling plate.



(5x) M10