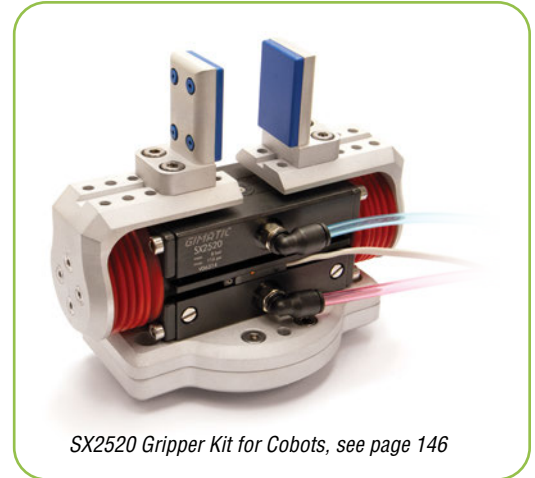


Two-Jaw Completely Sealed Gripper – SX

- Parallel, self-centering gripper.
- Suitable for Clean Room applications.
- Designed for use in harsh environments.
- Completely sealed, with IP67 protection class.
- Very high grip force.
- Normally closed models available on request.
- See Sensor Reference Guide on page 1010 for a complete list of compatible sensors.



Quick#	7164	7165	7166	7167	7168	7169	7170	7171
Part#	SX2510	SX2520	SX4020	SX4040	SX5030	SX5060	SX6340	SX6380
Price	\$587.00	\$594.00	\$808.00	\$827.00	\$1042.00	\$1121.00	\$1199.00	\$1433.00
Medium	Filtered, lubricated / non-lubricated compressed air							
Operating pressure range	30–116 psi							
Total Opening force at 87 psi	112.4 lbf	112.4 lbf	292 lbf	292 lbf	472 lbf	472 lbf	764 lbf	764 lbf
Total Closing force at 87 psi	87.6 lbf	87.6 lbf	224.8 lbf	224.8 lbf	360 lbf	360 lbf	562 lbf	562 lbf
Stroke (±0.5mm)	10mm	20mm	20mm	40mm	30mm	60mm	40mm	80mm
Opening / closing time without load	0.03s	0.05s	0.03s	0.08s	0.06s	0.10s	0.20s	0.30s
Repetition accuracy	0.05mm							
Mid-stroke detection capability	Yes, see Sensor Reference Guide on page 1010 for details.							
Weight	260g	310g	750g	900g	1300g	1700g	2800g	3500g

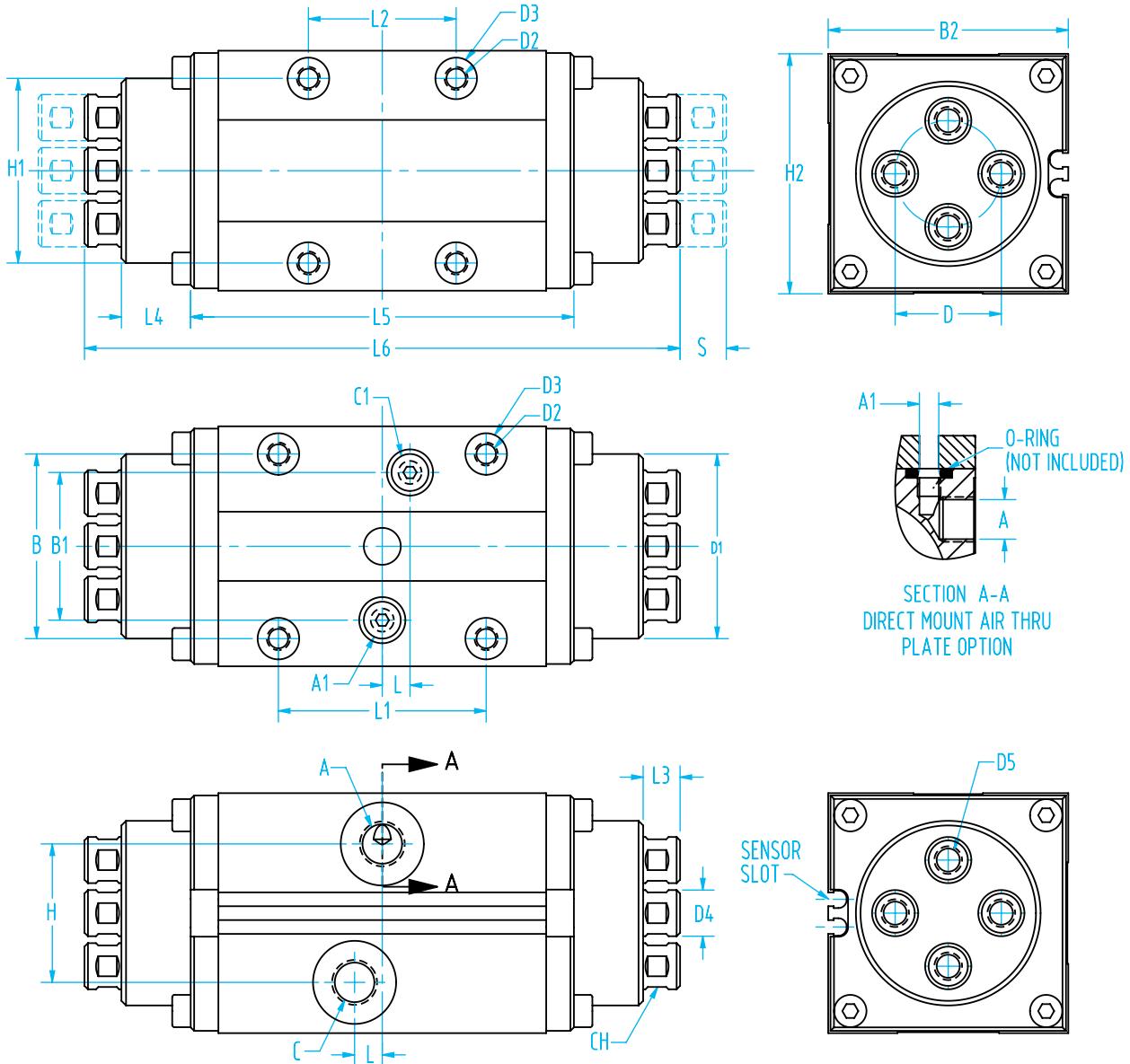


Optional Silicone Bellows to protect columns (sold individually)

Quick#	Part#	Price	For Gripper
7176	SX25S01	\$26.10	SX25__
7177	SX40S01	\$27.35	SX40__
7178	SX50S01	\$28.70	SX50__
7179	SX63S01	\$30.06	SX63__

For more information visit: www.EMlcorp.com

Two-Jaw Completely Sealed Gripper – SX



	SX2510	SX2520	SX4020	SX4040	SX5030	SX5060	SX6340	SX6380
A	M5	M5	G1/8	G/8	G1/8	G1/8	G1/8	G1/8
A1	M5	M5	M5	M5	M5	M5	G1/8	G1/8
B	±0.02	23	23	40	40	50	50	60
B1		22.5	22.5	32	32	38	38	45
B2		38	38	52	52	64	64	79
C	M5	M5	G1/8	G1/8	G1/8	G1/8	G1/8	G1/8
C1	M5	M5	M5	M5	M5	M5	G1/8	G1/8
D	±0.02	Ø15	Ø15	Ø23	Ø23	Ø33	Ø33	Ø38
D1		Ø27	Ø27	Ø40	Ø40	Ø50	Ø50	Ø63
D2		M4 ↓ 6.5	M4 ↓ 6.5	M5 ↓ 10	M5 ↓ 10	M6 ↓ 10	M6 ↓ 10	M8 ↓ 15
D3	H8	Ø7	Ø7	Ø9	Ø9	Ø9	Ø9	Ø12
D4	f7	Ø6	Ø6	Ø10	Ø10	Ø12	Ø12	Ø16
D5		M3 ↓ 6	M3 ↓ 6	M6 ↓ 12	M6 ↓ 12	M8 ↓ 20	M8 ↓ 20	M10 ↓ 20
H		22.5	22.5	30	30	40	40	45
H1	±0.02	23	23	40	40	50	50	60
H2		38	38	52	52	64	64	79
L		-	-	6	6	10	10	10
L1	±0.02	30	30	45	45	50	50	70
L2	±0.02	30	30	32	32	35	35	50
L3		7.5	7.5	8	8	8.5	8.5	9.5
L4		7.5	7.5	15	15	18	18	26
L5		59	73	84	110	106	146	133
L6		89	103	130	156	159	199	204
S		5	10	10	20	15	30	20
CH		5	5	9	9	11	11	14

A/A1: Supply compressed air to open gripper
 C/C1: Supply compressed air to close gripper
 S: Stroke per finger (x2 for full gripper stroke)
 CH: Wrench size
 Options: Direct mount/air through plate option requires an o-ring to seal air between the plate and gripper (see section view A-A). This option also requires a plug to be placed in the A/C ports since compressed air will be supplied to the A1/C1 ports.