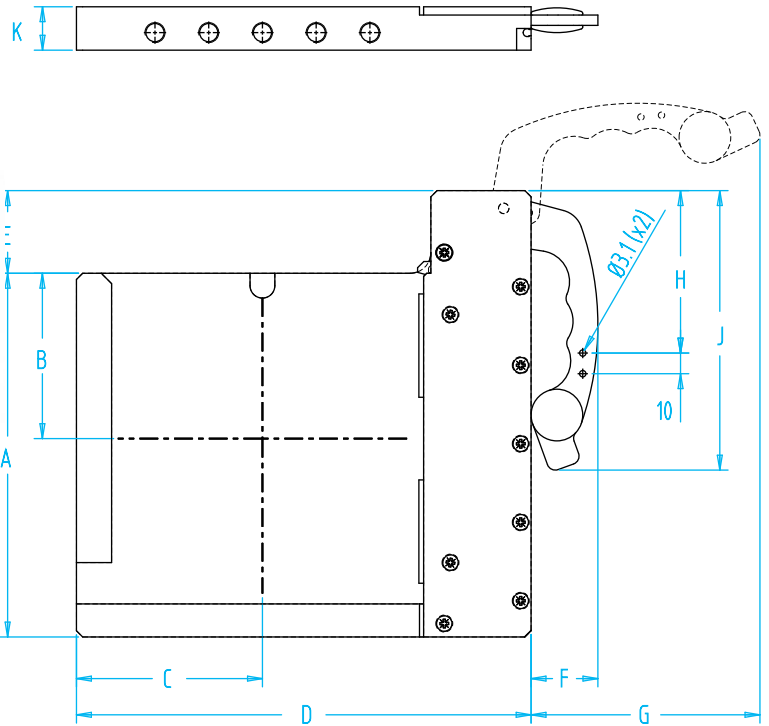
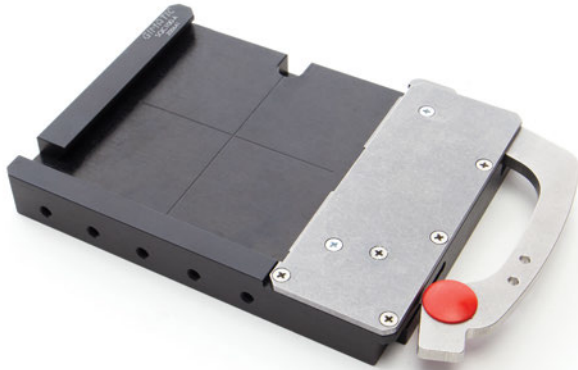


Dovetail One-Handle Quick Changer – Robot Side



- Dovetail-type EOAT mounting plate with one handle for safer operation.
- Uses the same EOAT mounting plates, order separately.
- Optional Gimatic SS.. sensors detect closed position. See page 1002.
- See page 83 for storage hangers.

Dovetail Quick Changer with One Handle

NEW

Quick#	Part#	Mounting Plate (order separately)	Price	Wt.
7568	SQC100-A	Size 1 Q#5781 (MFI-A41)	\$484.00	770g
7569	SQC160-A	Size 2 Q#5776 (MFI-A43)	\$602.00	2050g
7570	SQC250-A	Size 3 Q#7529 (MFI-A363)	\$779.00	3720g

Quick#	A	B	C	D	E	F	G	H	J	K	F lbs	Mt ft-lbs	Mb ft-lbs	Payload lbs
7568	110	50	57	147	5.5	28	76.6	55.5	100	19	45	33.2	22.1	22
7569	176	80	90	220	40	32.3	110.8	78.6	135.3	21	89.9	88.5	59	44
7570	270	125	150	325	40	32.3	110.8	78.6	135.3	20	179.8	221.3	147.5	88

F= Axial Load Limit Mt= Torque Moment Limit Mb= Bending Moment Limit (See drawing on page 75.)

