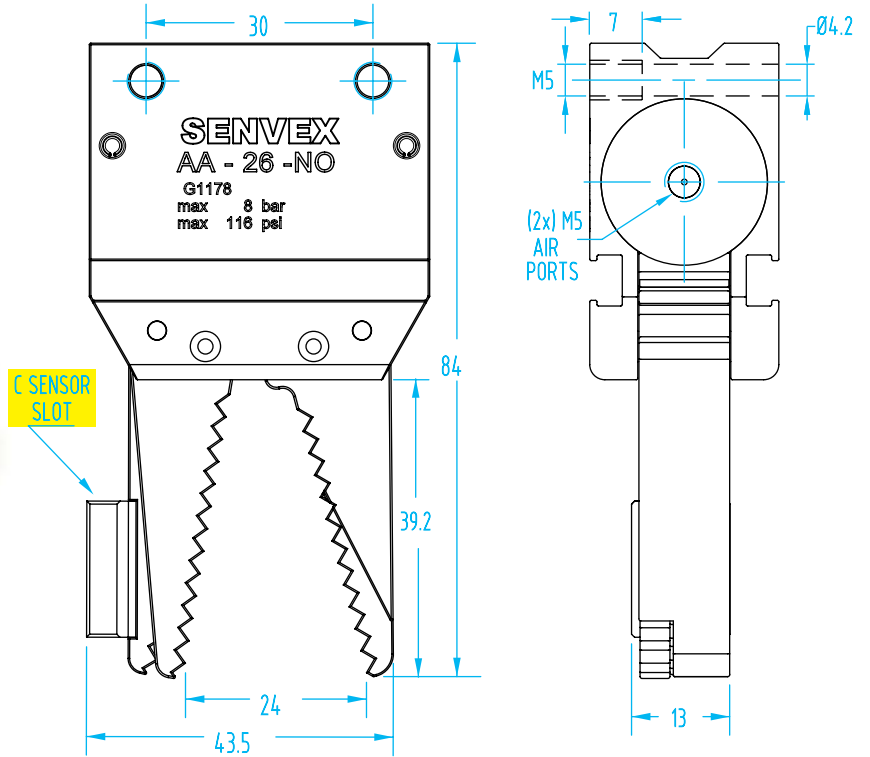
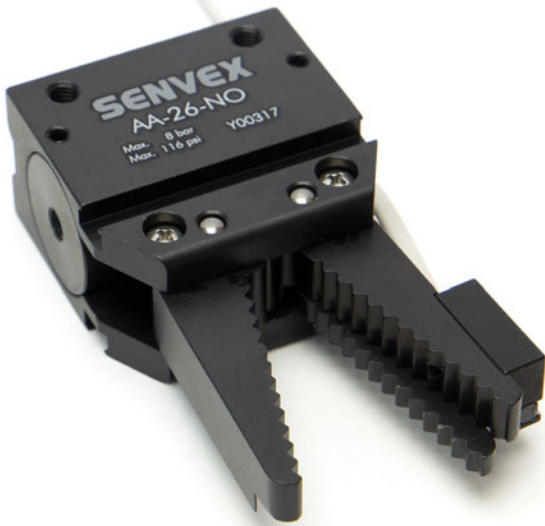
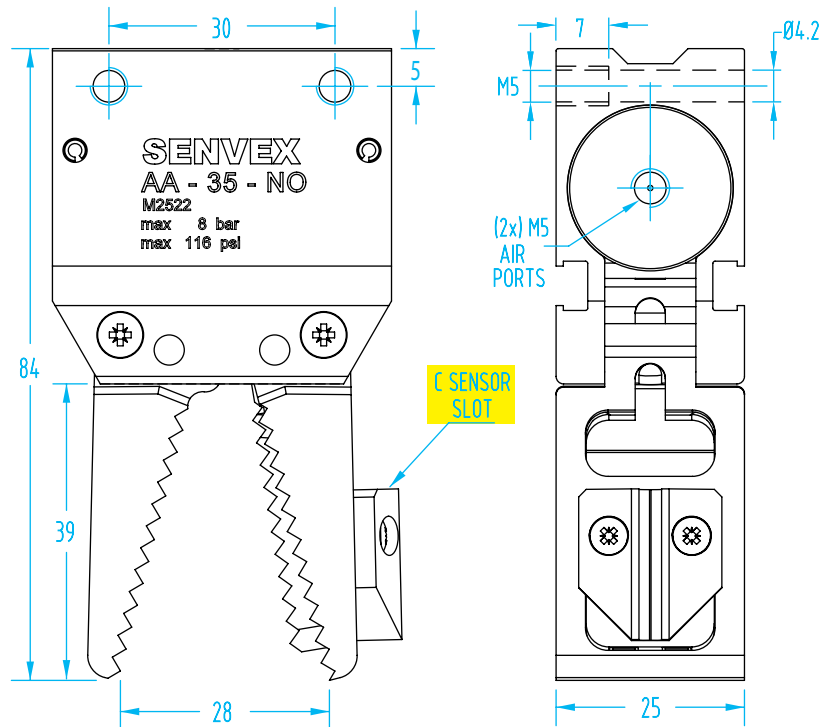


Sensor Finger Sprue Gripper – AA26 & AA-35

(Dimensioned drawings shown full scale)



- **Simple, easy sensing.** A single sensor mounted on the finger confirms 'sprue gripped' and eliminates the typical 'hide and seek' process of sensor set-up.
- The sprue detection mechanism is made of anodized aluminum for long life and built into the finger.
- Interlaced and serrated fingers allow a wide range of sprue diameters to be gripped and sensed.
- The high-power gripper body and closing mechanism are the same as the popular AA-22 and AA-26 models—of which thousands are in reliable operation.



Quick#	Part#	Price	Jaw Style	Operation	Applicable Sprue Ø	lbs. Force at 30mm Tooling Length*	Weight
1880	GSG-AA-26S-NO	\$186.00	Sensor Finger	Normally Open	4–12mm	19.0 lbf	115g
1881	GSG-AA-26S	\$186.00		Double Acting	4–12mm	22.5 lbf	115g
6625	AA-35-NO	\$241.00	Wide Sensor Finger	Normally Open	4–14mm	19.0 lbf	135g
6626	AA-35	\$241.00		Double Acting	4–14mm	22.5 lbf	135g

Note: Order SS.. C-Slot sensors for the jaw separately, see page 456

* Force when compressed air is supplied at 87psi. Tooling length is measured from jaw pivot point.