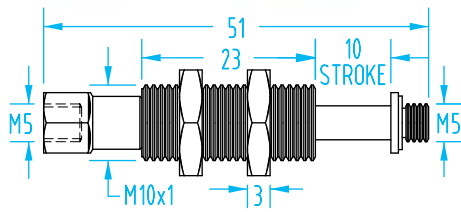


M10 Suspensions

(Dimensioned drawings shown full scale)

Quick#	Part#	Type	Stroke	Weight	Price
336	GSS-53-M10M5	Rotate	10mm	19g	\$19.75
337	GSS-53R-M10M5	Non-rotate	10mm	21g	\$22.34
2569	GSS-80-M10M5	Rotate	20mm	26g	\$23.64
2571	GSS-80R-M10M5	Non-rotate	20mm	26g	\$33.92
443	GSS-99-M10M5	Rotate	30mm	32g	\$24.68
1870	GSS-99R-M10M5	Non-rotate	30mm	32g	\$34.96
2576	GSS-119-M10M5	Rotate	50mm	43g	\$37.85
5444	GSS-119R-M10M5	Non-Rotate	50mm	46g	\$34.75



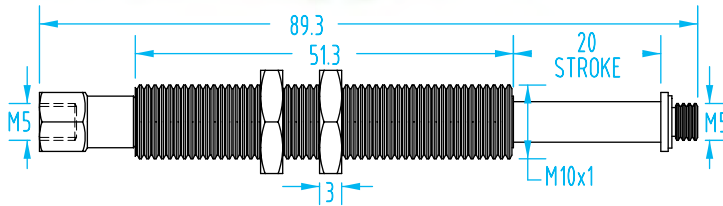
Fittings Available on page 1043



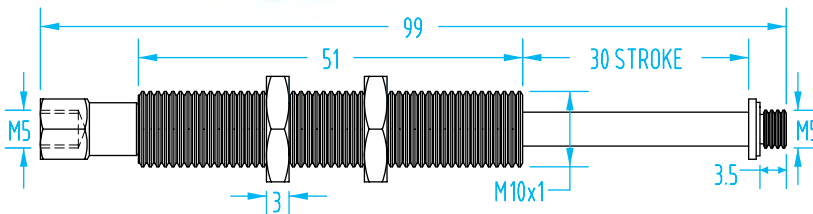
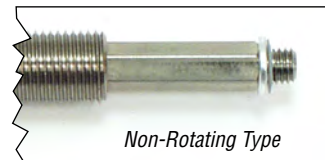
Mounting Brackets Available on page 244



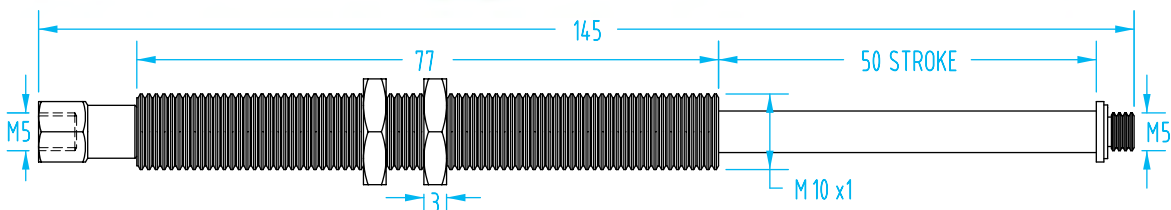
We recommend using an appropriately sized lock washer with threaded body suspensions, see page 1076.



#2571



#1870



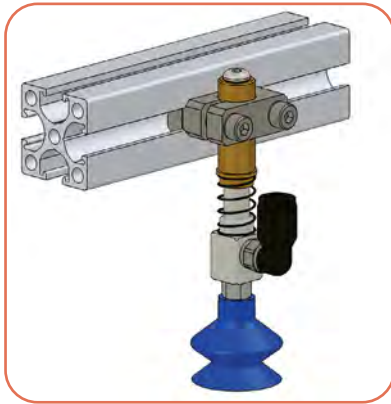
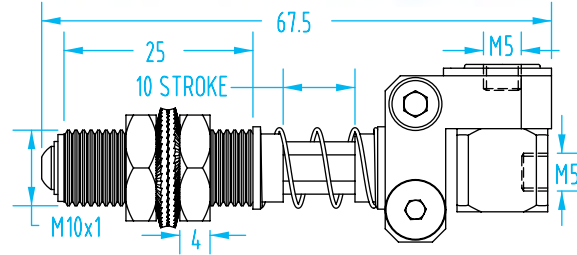
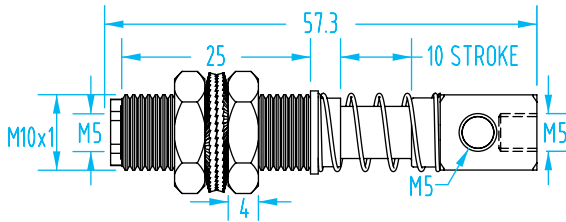
M10 Suspensions

(Dimensioned drawings shown full scale)

#3607



#3166



Quick#	Part#	>ASS< #	Type	Stroke	Weight	Price
3607	GAF10-M-10	1-356-09-00	Rotate	10mm	41g	\$33.08
3166	GGG10-M-10	1-360-06-00	Non-rotate	10mm	41g	\$36.75

Use Quick#s for easy online ordering.

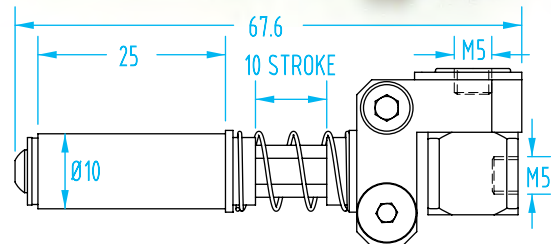
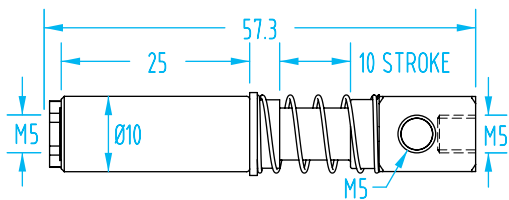
- Two options for fitting placement. It can either be fed through the side port (plugged initially) or it can pass through the vacuum channel which extends through the suspension body.

Ø10mm Suspensions

#3603



#3165



Quick#	Part#	>ASS< #	Type	Stroke	Weight	Price
3603	GAF10-U-10	1-356-00-00	Rotate	10mm	33g	\$28.88
3165	GGG10-C-10	1-360-03-00	Non-rotate	10mm	35g	\$36.75

- Two options for fitting placement. It can either be fed through the side port (plugged initially) or it can pass through the vacuum channel which extends through the suspension body.