

Gimatic® – 1.5 Bellows

(Shown Actual Size)



Gimatic Vacuum Cup Properties

Material	Color	Max Temp.	Durometer
FDA-Compliant Silicone	Clear	392°F	50°
Silicone	Red	392°F	50°
EPDM	Black	212° F	50°
HNBR	Blue	302° F	60°
Natural Rubber	Green	176° F	53°

See page 390 for nipple dimensions.

* 11.2mm Compressed

Cup Ø	Quick#	Part#	Reference	Price
11mm	5803	V0211S01	FDA-SIL	\$4.54
	5804	V0211E02	EPDM	\$2.92
	2025	V0211H04	HNBR	\$4.54
Nipple	V1157	GOC-2321408	Female M5	\$1.75
	V1159	GOC-2321410	Male M5	\$1.75
	V1161	GOC-2321412	Female G1/8"	\$3.79
	V1163	GOC-2321414	Male G1/8"	\$3.79

* 14mm Compressed

Cup Ø	Quick#	Part#	Reference	Price
16mm	5806	V0216S01	FDA-SIL	\$5.83
	5807	V0216E02	EPDM	\$3.56
	2026	V0216H04	HNBR	\$5.83
	Nipple	V1157	GOC-2321408	Female M5
V1159		GOC-2321410	Male M5	\$1.75
V1161		GOC-2321412	Female G1/8"	\$3.79
V1163		GOC-2321414	Male G1/8"	\$3.79

* 12mm Compressed

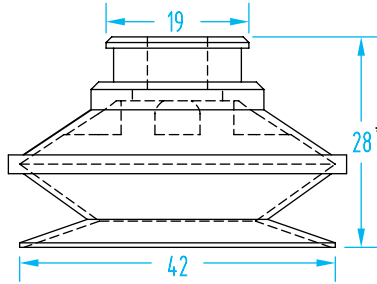
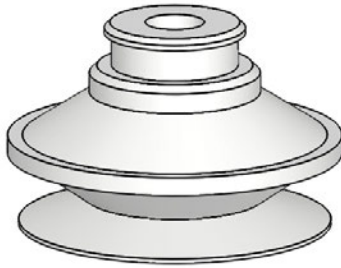
Cup Ø	Quick#	Part#	Reference	Price
22mm	5809	V0222S01	FDA-SIL	\$7.14
	5810	V0222E02	EPDM	\$3.89
	2027	V0222H04	HNBR	\$7.14
Nipple	V1157	GOC-2321408	Female M5	\$1.75
	V1159	GOC-2321410	Male M5	\$1.75
	V1161	GOC-2321412	Female G1/8"	\$3.79
	V1163	GOC-2321414	Male G1/8"	\$3.79

* 15mm Compressed

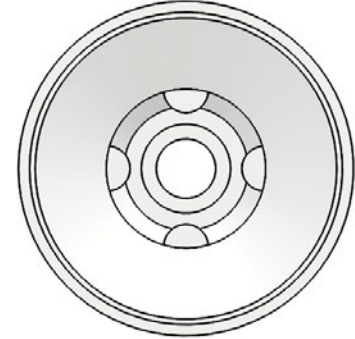
Cup Ø	Quick#	Part#	Reference	Price
33mm	5812	V0233S01	FDA-SIL	\$7.79
	5813	V0233E02	EPDM	\$5.51
	2028	V0233H04	HNBR	\$7.79
Nipple	V1171	GOC-2321422	Female G1/8"	\$5.84
	V1173	GOC-2321424	Male G1/8"	\$5.84
	V1175	GOC-2321426	Female G1/8"	\$5.84
	V1177	GOC-2321428	Male G1/8"	\$5.84
	V1179	GOC-2321430	Female G1/4"	\$6.43
	5830	AV0114M16	Male G1/4"	\$7.14

Gimatic® – 1.5 Bellows

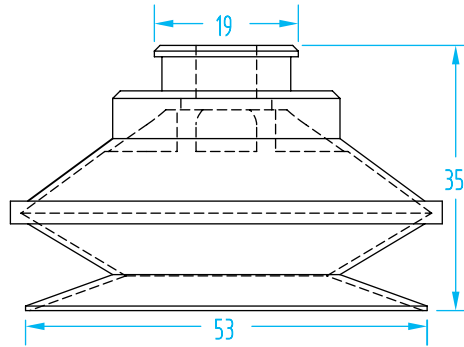
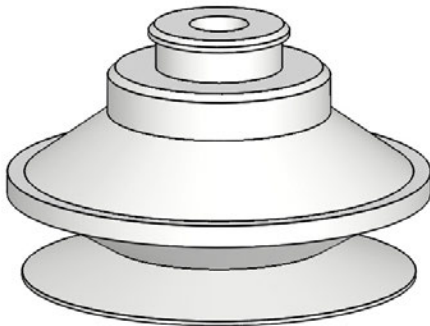
(Shown Actual Size)



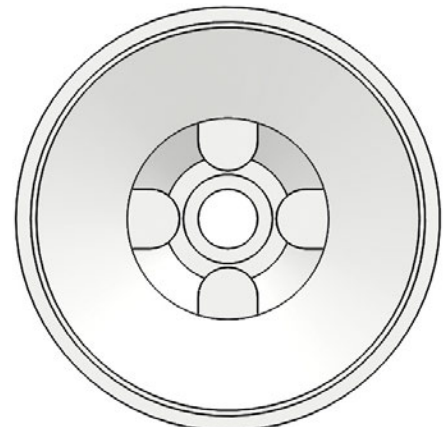
* 14.5mm Compressed



Cup Ø	Quick#	Part#	Reference	Price
42mm	5815	V0242S01	FDA-SIL	\$8.44
	5816	V0242E02	EPDM	\$7.14
	2029	V0242H04	HNBR	\$8.44
Nipple	V1171	GOC-2321422	Female G1/8"	\$5.84
	V1173	GOC-2321424	Male G1/8"	\$5.84
	V1175	GOC-2321426	Female G1/8"	\$5.84
	V1177	GOC-2321428	Male G1/8"	\$5.84
	V1179	GOC-2321430	Female G1/4"	\$6.43
	5830	AV0114M16	Male G1/4"	\$7.14



* 17.8mm Compressed



Cup Ø	Quick#	Part#	Reference	Price
53mm	5818	V0253S01	FDA-SIL	\$10.06
	5819	V0253E02	EPDM	\$8.11
	2030	V0253H04	HNBR	\$10.06
Nipple	V1171	GOC-2321422	Female G1/8"	\$5.84
	V1173	GOC-2321424	Male G1/8"	\$5.84
	V1175	GOC-2321426	Female G1/8"	\$5.84
	V1177	GOC-2321428	Male G1/8"	\$5.84
	V1179	GOC-2321430	Female G1/4"	\$6.43
	5830	AV0114M16	Male G1/4"	\$7.14