

Cups for Carbon Fiber Parts and Sheet

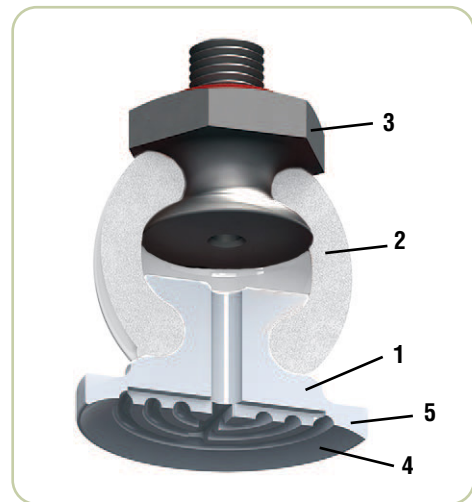
(Shown Actual Size)



No needle damage!

Handle hot molded carbon fiber parts and cold carbon fiber sheet without damage caused when using needle grippers.

1. PTFE vacuum cup does not stick to hot carbon fiber parts up to 480°F.
2. Flexible white silicone bellow allows axial and angular movements for part compliance.
3. Stainless steel nipple included.
4. The supporting ribs avoid suction and deformation of soft materials.
5. The flexible lip allows good vacuum even at the low temperatures for effective sealing over cold composites.
6. Patented

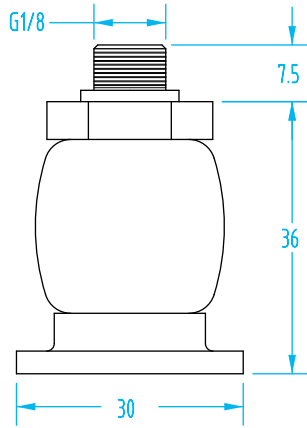
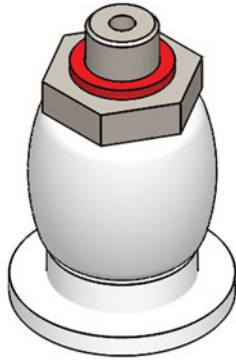


Quick#	Part#	Cup Ø	Weight	Price
7339	PAAT16R	16mm	9g	\$69.50

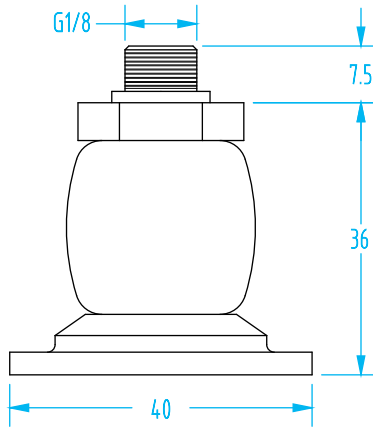
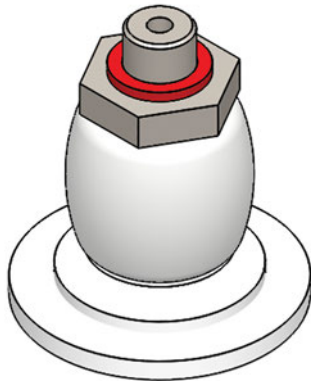
Quick#	Part#	Cup Ø	Weight	Price
7340	PAAT20R	20mm	9g	\$69.50

Cups for Carbon Fiber Parts and Sheet

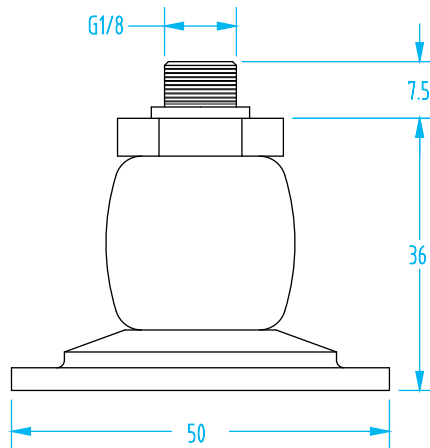
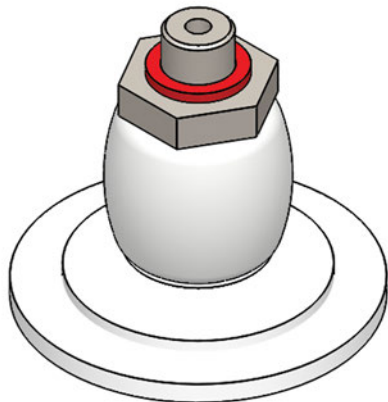
(Shown Actual Size)



Quick#	Part#	Cup Ø	Weight	Price
7341	PAAT30R	30mm	35g	\$79.00



Quick#	Part#	Cup Ø	Weight	Price
7342	PAAT40R	40mm	37g	\$87.25



Quick#	Part#	Cup Ø	Weight	Price
7343	PAAT50R	50mm	41g	\$101.00