

OnRobot Offset Mounting Brackets



#8279

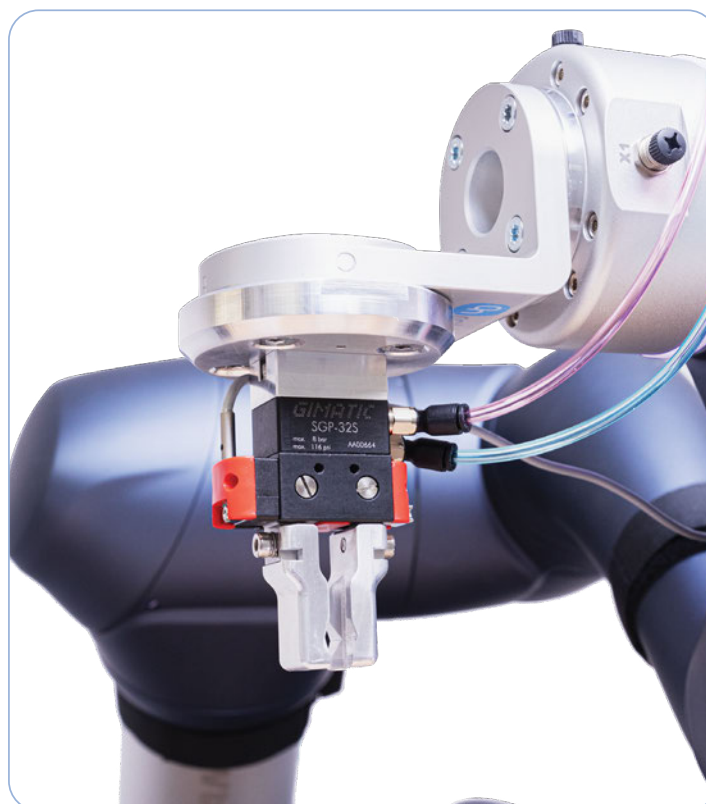
The OnRobot Angle Offset Brackets enable you to attach tools at a 45 or 90 degree angle from the robot flange. This improves the tool's ability to fit into tight spaces and it can lower the risk of the robot arm going into singularity.

OnRobot Offset Brackets

Quick#	Part#	Description	Weight	Price
8279	OR-105870	90° Offset	207g	\$233.33

OnRobot pricing effective 05/01/24 and subject to change.

- Machined aluminum.
- Fasteners included.
- Can mount to any robot with ISO 9409-1-50-4-M6 mounting pattern.
- Compatible with any gripper that mounts to the robot wrist.
- Dimensional drawings available online.
- Contact EMI if you need a custom offset adapter for your gripper.



OnRobot Offset Mounting Brackets

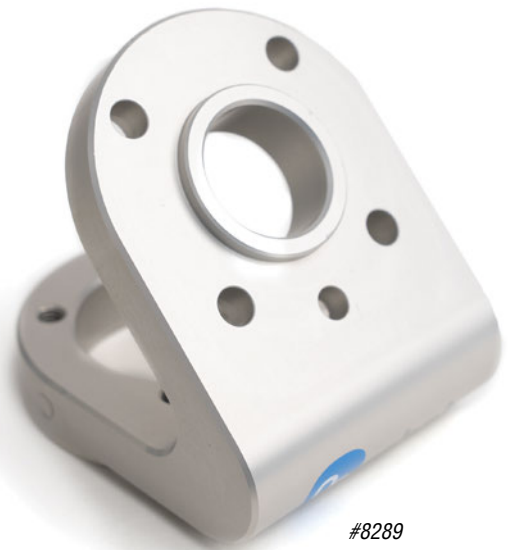


#8269

OnRobot Offset Brackets

Quick#	Part#	Description	Weight	Price
8269	OR-101850	50mm Offset	151g	\$128.00

OnRobot pricing effective 05/01/24 and subject to change.



#8289

OnRobot Offset Brackets

Quick#	Part#	Description	Weight	Price
8289	OR-113375	45° Offset	257g	\$233.33

OnRobot pricing effective 05/01/24 and subject to change.

- CU
- QC
- VG
- VC
- VA
- SG
- GR
- MT
- AC
- CS
- CC