

EJ-BA-MEDIUM

- Ideal for decentralized applications
- Low power consumption
- Can be integrated near the gripping point, lightweight
- G1/8" - G1/4" - G3/8" vacuum ports
- Auxiliary vacuum port, for possible blow-off or monitoring of the G1/8" system
- Available with two- and three-stage EJ-MEDIUM cartridge (EJ-LP, EJ-HF, EJ-HV)

Typical applications

- Handling of sealed items such as parts in glass and metal (EJ-HV)
- Packaging, cartoners, case packing machines (EJ-HF, EJ-LP)
- Plastic (molding)
- Automotive
- Particularly suitable for low cost automated applications

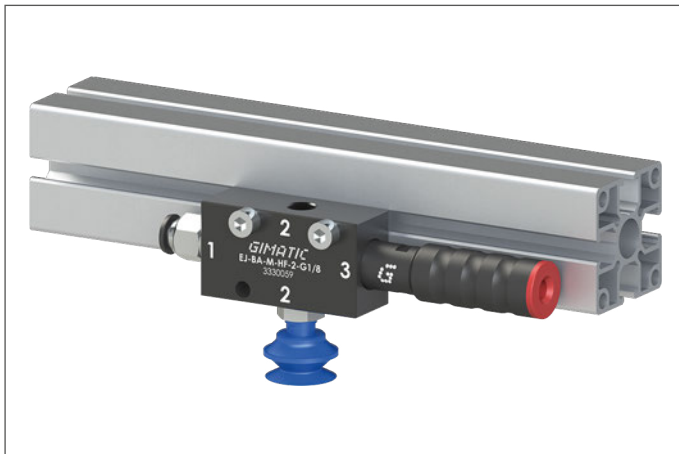
NEW



NEW



Application example



Technical features

Max feed pressure	0.7 MPa
Weight	83 ± 112 g
Material	POM, PA, Al, Nitrile (NBR)
Noise level	< 70 dB

Suction flow rate

Model	Feed pressure [MPa]	Air consumption [l/s]	Suction flow rate [l/s] at different vacuum levels [kPa]										Max vacuum [kPa]
			0	-10	-20	-30	-40	-50	-60	-70	-80	-90	
EJ-BA-M-LP-2	0.4	0.55	0.67	0.61	0.53	0.38	0.23	0.12	0.09	0.06	0.02	–	-89
EJ-BA-M-LP-3	0.4	0.55	1.5	0.71	0.53	0.38	0.23	0.12	0.09	0.06	0.02	–	-89
EJ-BA-M-HF-2	0.6	0.43	0.78	0.68	0.52	0.31	0.21	0.15	0.10	0.08	–	–	-73
EJ-BA-M-HF-3	0.6	0.43	1.35	0.75	0.55	0.31	0.21	0.15	0.10	0.08	–	–	-73
EJ-BA-M-HV-2	0.5	0.47	0.76	0.63	0.54	0.32	0.17	0.15	0.11	0.07	0.05	0.01	-94
EJ-BA-M-HV-3	0.5	0.47	1.47	0.78	0.54	0.32	0.17	0.15	0.11	0.07	0.05	0.01	-94

For technical specifications, regarding the suction flow rate and the air consumption at different pressures, please refer to the technical data sheets of the EJ-MEDIUM cartridges in the two- and three-stage versions

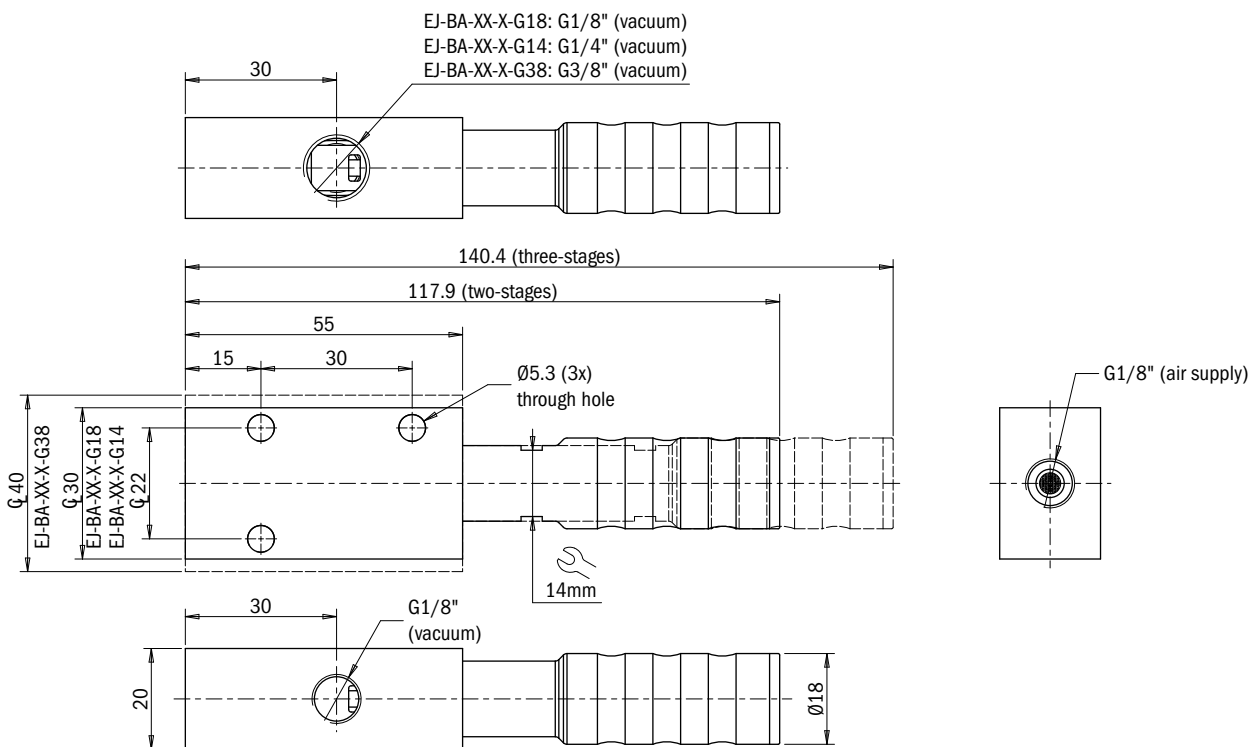
Evacuation time

Model	Feed pressure [MPa]	Air consumption [l/s]	Evacuation time [s/l] to reach different vacuum levels [kPa]										Max vacuum [kPa]
			-10	-20	-30	-40	-50	-60	-70	-80	-90		
EJ-BA-M-LP-2	0.4	0.55	0.17	0.33	0.55	0.9	1.5	2.4	3.7	7.1	–	-89	
EJ-BA-M-LP-3	0.4	0.55	0.08	0.23	0.44	0.76	1.4	2.4	3.7	7.1	–	-89	
EJ-BA-M-HF-2	0.6	0.43	0.13	0.30	0.54	0.9	1.5	2.3	3.2	–	–	-73	
EJ-BA-M-HF-3	0.6	0.43	0.10	0.25	0.48	0.8	1.3	2.3	3.2	–	–	-73	
EJ-BA-M-HV-2	0.5	0.47	0.14	0.32	0.55	1.0	1.6	2.4	3.5	5.1	8.7	-94	
EJ-BA-M-HV-3	0.5	0.47	0.08	0.24	0.47	0.88	1.6	2.4	3.5	5.1	8.7	-94	

For technical specifications regarding the evacuation time and the consumption at different pressures, please refer to the technical data sheets of the EJ-MEDIUM cartridges, in the two- and three-stage versions

Identification codes

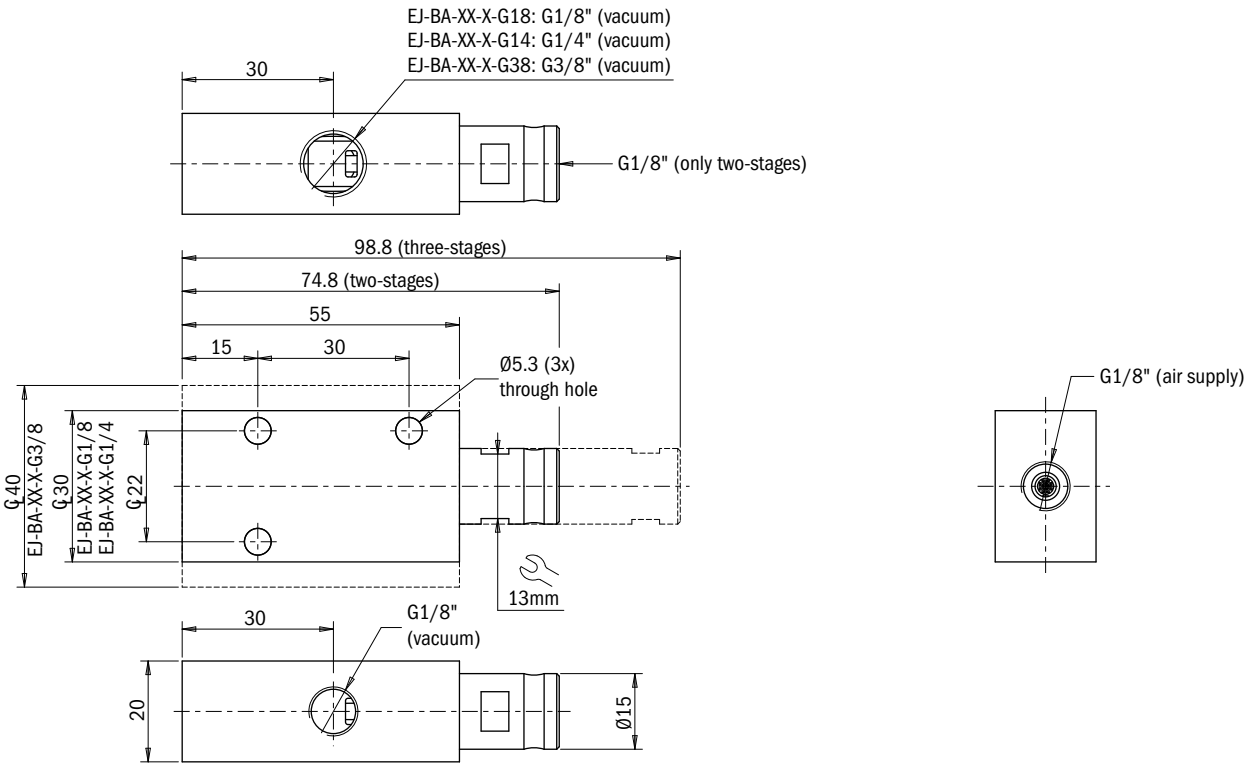
Alphanumeric code	Description	Order code
EJ-BA-M-LP-2-G1/8	EJ-BA-MEDIUM-LP-2 vacuum pump with holder and integrated silencer, G1/8" vacuum port	3330057
EJ-BA-M-LP-3-G1/8	EJ-BA-MEDIUM-LP-3 vacuum pump with holder and integrated silencer, G1/8" vacuum port	3330058
EJ-BA-M-HF-2-G1/8	EJ-BA-MEDIUM-HF-2 vacuum pump with holder and integrated silencer, G1/8" vacuum port	3330059
EJ-BA-M-HF-3-G1/8	EJ-BA-MEDIUM-HF-3 vacuum pump with holder and integrated silencer, G1/8" vacuum port	3330060
EJ-BA-M-HV-2-G1/8	EJ-BA-MEDIUM-HV-2 vacuum pump with holder and integrated silencer, G1/8" vacuum port	3330061
EJ-BA-M-HV-3-G1/8	EJ-BA-MEDIUM-HV-3 vacuum pump with holder and integrated silencer, G1/8" vacuum port	3330062
EJ-BA-M-LP-2-G1/4	EJ-BA-MEDIUM-LP-2 vacuum pump with holder and integrated silencer, G1/4" vacuum port	3330064
EJ-BA-M-LP-3-G1/4	EJ-BA-MEDIUM-LP-3 vacuum pump with holder and integrated silencer, G1/4" vacuum port	3330065
EJ-BA-M-HF-2-G1/4	EJ-BA-MEDIUM-HF-2 vacuum pump with holder and integrated silencer, G1/4" vacuum port	3330066
EJ-BA-M-HF-3-G1/4	EJ-BA-MEDIUM-HF-3 vacuum pump with holder and integrated silencer, G1/4" vacuum port	3330067
EJ-BA-M-HV-2-G1/4	EJ-BA-MEDIUM-HV-2 vacuum pump with holder and integrated silencer, G1/4" vacuum port	3330068
EJ-BA-M-HV-3-G1/4	EJ-BA-MEDIUM-HV-3 vacuum pump with holder and integrated silencer, G1/4" vacuum port	3330069
EJ-BA-M-LP-2-G3/8	EJ-BA-MEDIUM-LP-2 vacuum pump with holder and integrated silencer, G3/8" vacuum port	3330071
EJ-BA-M-LP-3-G3/8	EJ-BA-MEDIUM-LP-3 vacuum pump with holder and integrated silencer, G3/8" vacuum port	3330072
EJ-BA-M-HF-2-G3/8	EJ-BA-MEDIUM-HF-2 vacuum pump with holder and integrated silencer, G3/8" vacuum port	3330073
EJ-BA-M-HF-3-G3/8	EJ-BA-MEDIUM-HF-3 vacuum pump with holder and integrated silencer, G3/8" vacuum port	3330074
EJ-BA-M-HV-2-G3/8	EJ-BA-MEDIUM-HV-2 vacuum pump with holder and integrated silencer, G3/8" vacuum port	3330075
EJ-BA-M-HV-3-G3/8	EJ-BA-MEDIUM-HV-3 vacuum pump with holder and integrated silencer, G3/8" vacuum port	3330076



Identification codes		
Alphanumeric code	Description	Order code
EJ-BA-M-LP-2-G1/8-H NEW	EJ-BA-MEDIUM-LP-2 vacuum pump with holder, G1/8" vacuum port	3331057
EJ-BA-M-HF-2-G1/8-H NEW	EJ-BA-MEDIUM-HF-2 vacuum pump with holder, G1/8" vacuum port	3331059
EJ-BA-M-HV-2-G1/8-H NEW	EJ-BA-MEDIUM-HV-2 vacuum pump with holder, G1/8" vacuum port	3331061
EJ-BA-M-LP-2-G1/4-H NEW	EJ-BA-MEDIUM-LP-2 vacuum pump with holder, G1/4" vacuum port	3331064
EJ-BA-M-HF-2-G1/4-H NEW	EJ-BA-MEDIUM-HF-2 vacuum pump with holder, G1/4" vacuum port	3331066
EJ-BA-M-HV-2-G1/4-H NEW	EJ-BA-MEDIUM-HV-2 vacuum pump with holder, G1/4" vacuum port	3331068
EJ-BA-M-LP-2-G3/8-H NEW	EJ-BA-MEDIUM-LP-2 vacuum pump with holder, G3/8" vacuum port	3331071
EJ-BA-M-HF-2-G3/8-H NEW	EJ-BA-MEDIUM-HF-2 vacuum pump with holder, G3/8" vacuum port	3331073
EJ-BA-M-HV-2-G3/8-H NEW	EJ-BA-MEDIUM-HV-2 vacuum pump with holder, G3/8" vacuum port	3331075

3-stage configurations are also available on request

Click for Pricing & Add to Cart



Introduction

Vacuum theory

Suction cups

Vacuum pumps

Customised solutions

Suspensions

System accessories