

EJ-LARGE cartridges for integration

EJ-LARGE-HF-2

- Two-stage EJ-LARGE-HF-2 cartridge with compact dimensions
- Can be integrated near the gripping point
- Ideal for handling objects with uneven or porous surfaces
- Suitable for removing large volumes of air
- Able to compensate for any losses on the gripping surface
- Maximum vacuum level (-73 kPa)
- Available in the cartridge-only or cartridge with holder and integrated silencer versions



Technical features

Max feed pressure	0.7 MPa
Temperature range	+14 - +176 °F
Weight	15.3 ± 68.7 g

Suction flow rate

Feed pressure [MPa]	Air consumption [NI/s]	Suction flow rate [NI/s] at different vacuum levels [kPa]								Max vacuum [kPa]
		0	-10	-20	-30	-40	-50	-60	-70	
0.4	1.3	3.0	2.6	1.8	1.1	0.80	0.38	0.1	—	-60
0.5	1.5	3.1	2.8	2.1	1.4	0.86	0.60	0.30	0.18	-70
0.6	1.7	3.2	3.0	2.5	1.7	0.89	0.62	0.51	0.31	-73

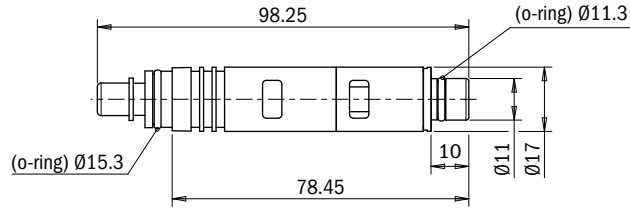
Evacuation time

Feed pressure [MPa]	Air consumption [NI/s]	Evacuation time [s/l] to reach different vacuum levels [kPa]							Max vacuum [kPa]
		-10	-20	-30	-40	-50	-60	-70	
0.4	1.3	0.04	0.08	0.15	0.2	0.3	0.5	—	-60
0.5	1.5	0.03	0.07	0.13	0.2	0.3	0.5	0.7	-70
0.6	1.7	0.03	0.07	0.12	0.19	0.3	0.4	0.7	-73

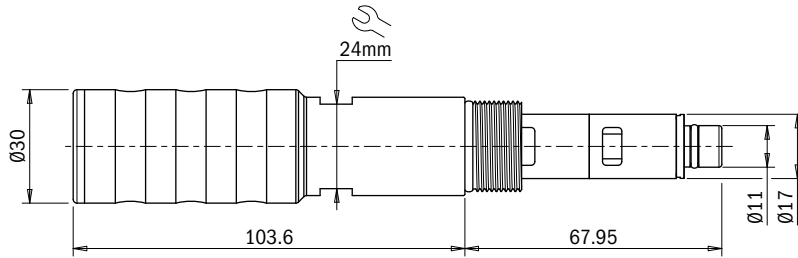
Identification codes

Drawing	Alphanumeric code	Description	Order code
A	EJ-L-HF-2	EJ-LARGE-HF-2 without holder	3300041
B	EJ-L-HF-2-HS	EJ-LARGE-HF-2 with holder and integrated silencer	3300042
C	EJ-L-HF-2-NR	EJ-LARGE-HF-2 with non-return valve	3300043
D	EJ-L-HF-2-NR-HS	EJ-LARGE-HF-2 with holder, integrated silencer and non-return valve	3300044
E	EJ-L-HF-2-H	EJ-LARGE-HF-2 with holder	3300064

A C



B D



E

