

EJ-LARGE cartridges for integration

EJ-LARGE-LP-2

- Two-stage EJ-LARGE-LP-2 cartridge, small-sized
- Can be integrated near the gripping point
- Suitable and reliable even in the case of fluctuations in feed pressure
- Ideal for handling sealed objects
- Maximum vacuum level (-90 kPa)
- Available in the cartridge-only or cartridge with holder and integrated silencer versions



Technical features

Max feed pressure	0.7 MPa
Temperature range	+14 - +176 °F
Weight	15.3 ÷ 68.7 g

Suction flow rate

Feed pressure [MPa]	Air consumption [NI/s]	Suction flow rate [NI/s] at different vacuum levels [kPa]										Max vacuum [kPa]
		0	-10	-20	-30	-40	-50	-60	-70	-80	-90	
0.2	1.5	2.6	1.6	1.0	0.7	0.4	0.14	–	–	–	–	-60
0.35	2.3	2.9	2.6	1.8	1.4	0.94	0.47	0.29	0.25	0.08	0.08	-90
0.4	2.6	2.8	2.5	2.1	1.5	1.1	0.66	0.36	0.26	0.08	0.08	-89

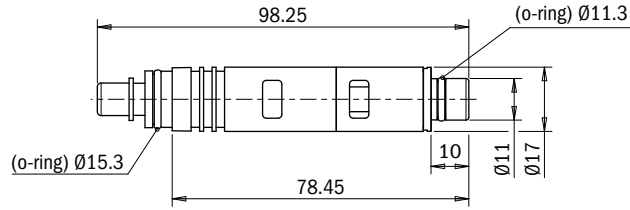
Evacuation time

Feed pressure [MPa]	Air consumption [NI/s]	Evacuation time [s/l] to reach different vacuum levels [kPa]										Max vacuum [kPa]
		-10	-20	-30	-40	-50	-60	-70	-80	-90	-90	
0.2	1.5	0.05	0.12	0.24	0.4	0.8	–	–	–	–	–	-60
0.35	2.3	0.04	0.08	0.14	0.2	0.4	0.6	1.0	1.6	–	–	-90
0.4	2.6	0.04	0.07	0.14	0.19	0.3	0.5	0.8	1.4	–	–	-89

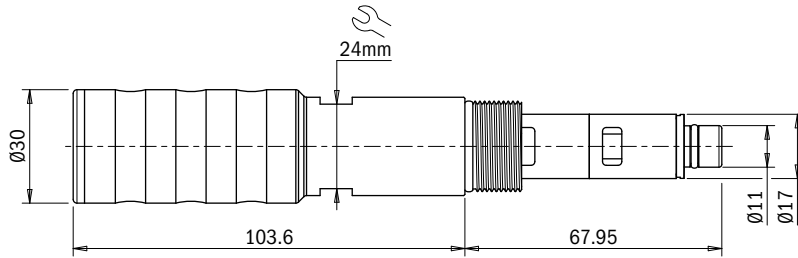
Identification codes

Drawing	Alphanumeric code	Description	Order code
A	EJ-L-LP-2	EJ-LARGE-LP-2 without holder	3300033
B	EJ-L-LP-2-HS	EJ-LARGE-LP-2 with holder and integrated silencer	3300034
C	EJ-L-LP-2-NR	EJ-LARGE-LP-2 with non-return valve	3300035
D	EJ-L-LP-2-NR-HS	EJ-LARGE-LP-2 with holder, integrated silencer and non-return valve	3300036
E	EJ-L-LP-2-H	EJ-LARGE-LP-2 with holder	3300065

A C



B D



E

