

EJ-SMALL cartridges for integration

EJ-SMALL-LP-2

- Two-stage EJ-SMALL-LP-2 cartridge with extremely compact dimensions
- Can be integrated near the gripping point, lightweight
- Ideal for high speed Pick & Place applications
- Suitable for handling sealed objects
- Maximum vacuum level (-82 kPa)
- Available in the cartridge-only or cartridge with holder versions

Introduction

Vacuum theory

Suction cups

Vacuum pumps

Customised solutions

Suspensions

System accessories



Technical features

Max feed pressure	0.7 MPa
Temperature range	+14 - +176 °F
Weight	0.6 ÷ 1.9 g

Suction flow rate

Feed pressure [MPa]	Air consumption [l/s]	Suction flow rate [l/s] at different vacuum levels [kPa]								Max vacuum [kPa]
		0	-10	-20	-30	-40	-50	-60	-70	
0.12	0.11	0.18	0.08	0.05	0.038	0.023	–	–	–	-50
0.15	0.13	0.20	0.09	0.06	0.05	0.04	0.02	–	–	-65
0.22	0.17	0.25	0.18	0.08	0.05	0.04	0.025	0.018	0.0053	-82

Evacuation time

Feed pressure [MPa]	Air consumption [l/s]	Evacuation time [s/l] to reach different vacuum levels [kPa]								Max vacuum [kPa]
		-10	-20	-30	-40	-50	-60	-70	-80	
0.12	0.11	0.77	2.31	4.58	7.9	16.6	–	–	–	-50
0.15	0.13	0.69	2.02	3.84	6.1	9.4	19.4	–	–	-65
0.22	0.17	0.47	1.23	2.77	5	8.07	12.7	21.3	59.01	-82

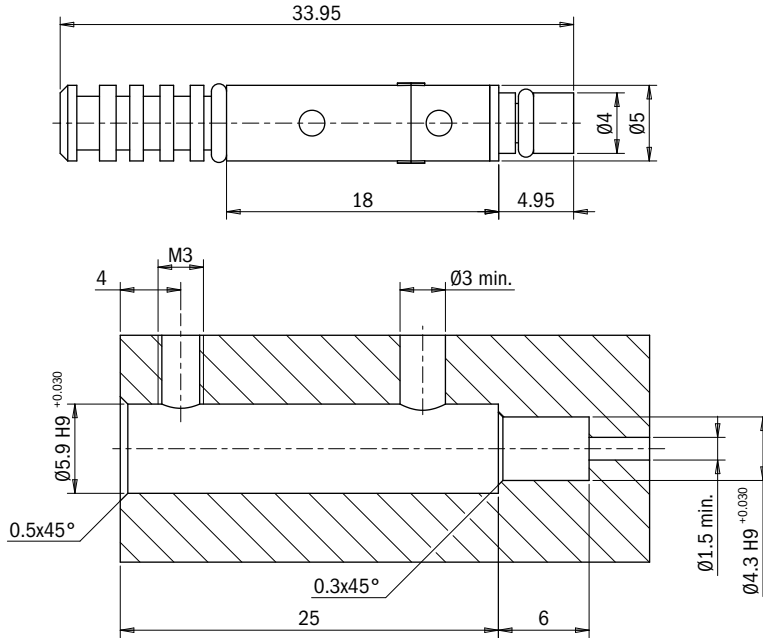
Identification codes

Drawing	Alphanumeric code	Description	Order code
A	EJ-S-LP-2	EJ-SMALL-LP-2 without holder	3300001
B	EJ-S-LP-2-H	EJ-SMALL-LP-2 with holder	3300002



Click for Pricing & Add to Cart

A



B

