

## EJ-SVLG-MEDIUM-ISO

- Ideal for centralized and decentralized applications
- Excellent ratio between suction flow rate and compressed air consumption
- Available with ON/OFF vacuum valve and integrated manual override control
- POM manifold prepared for mounting ISO 15218 (15 mm) valve of type 3/2, NO or NC, with 1.6 mm diameter opening
- Available with two- and three-stage EJ-MEDIUM cartridges (EJ-LP, EJ-HF, EJ-HV)
- Additional vacuum port for mounting a vacuum switch

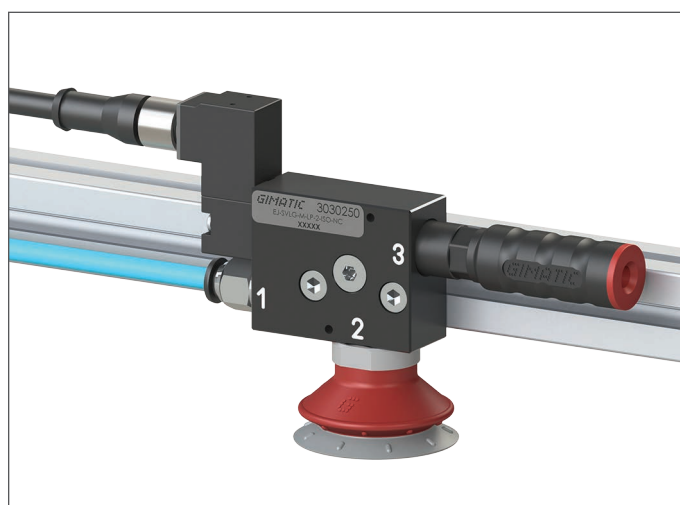
### Typical applications

- Packaging machines, for the food and pharmaceutical sector
- Handling of cosmetic products
- Pick-up of porous items (cardboard, wooden sheets)
- In applications that require an integrated control system with reduced weight and compact dimensions (electronics sector)

**NEW**



Application example



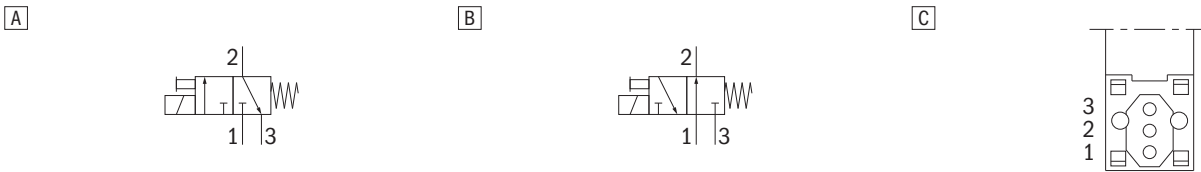
### Pump technical features

Max feed pressure	0.7 MPa
Weight (with solenoid valves)	60 (95) g
Material	SS, POM, Al, Nitrile (POM)
Noise level	< 70 dB
Operating temperature	-5 + +50 °C

Technical features of the solenoid valves (optional)			
Brand	FIM Valvole		
Model	N331/3LB		
Operation	3/2 Normally closed (NC)	A	
Orifice	1.6 mm		
Type of electrical connection	5-pin M12x1 (each valve)		
Drive voltage	24 Vcc ±10%		
Power absorption	2.5 W (each valve)		
IP rating	IP65		
Standard	ISO 15218 (15 mm)		

Features of compatible valves			
Standard	ISO 15218 - 15 mm (Ø1.6 hole)		
Operation	3/2 NC	C	3/2 NO C

Example of compatible valves		
Brand	Coding	Lay-out
FIM	N331/3LB	A
FIM	N331/ROB	A
FIM	N341/3B (5 bar max)	B
Camozzi	W000-303-W23	A
Camozzi	W000-403-W23 (5 bar max)	B



Model	Feed pressure [MPa]	Air consumption [NI/s]	Suction flow rate [NI/s] at different vacuum levels [kPa]										Max vacuum [kPa]
			0	-10	-20	-30	-40	-50	-60	-70	-80	-90	
EJ-SVLG-M-LP-2	0.45 *	0.55	0.67	0.61	0.53	0.38	0.23	0.12	0.09	0.06	0.02	—	-89
EJ-SVLG-M-LP-3	0.45 *	0.55	1.5	0.71	0.53	0.38	0.23	0.12	0.09	0.06	0.02	—	-89
EJ-SVLG-M-HF-2	0.65 *	0.43	0.78	0.68	0.52	0.31	0.21	0.15	0.10	0.08	—	—	-73
EJ-SVLG-M-HF-3	0.65 *	0.43	1.35	0.75	0.55	0.31	0.21	0.15	0.10	0.08	—	—	-73
EJ-SVLG-M-HV-2	0.55 *	0.47	0.76	0.63	0.54	0.32	0.17	0.15	0.11	0.07	0.05	0.01	-94
EJ-SVLG-M-HV-3	0.55 *	0.47	1.47	0.78	0.54	0.32	0.17	0.15	0.11	0.07	0.05	0.01	-94

For technical specifications, regarding the suction flow rate and the air consumption at different pressures, please refer to the technical data sheets of the EJ-MEDIUM cartridges in the two- and three-stage versions

Model	Feed pressure [MPa]	Air consumption [NI/s]	Evacuation time [s/I] to reach different vacuum levels [kPa]									Max vacuum [kPa]
			-10	-20	-30	-40	-50	-60	-70	-80	-90	
EJ-SVLG-M-LP-2	0.45 *	0.55	0.17	0.33	0.55	0.9	1.5	2.4	3.7	7.1	—	-89
EJ-SVLG-M-LP-3	0.45 *	0.55	0.08	0.23	0.44	0.76	1.4	2.4	3.7	7.1	—	-89
EJ-SVLG-M-HF-2	0.65 *	0.43	0.13	0.30	0.54	0.9	1.5	2.3	3.2	—	—	-73
EJ-SVLG-M-HF-3	0.65 *	0.43	0.10	0.25	0.48	0.8	1.3	2.3	3.2	—	—	-73
EJ-SVLG-M-HV-2	0.55 *	0.47	0.14	0.32	0.55	1.0	1.6	2.4	3.5	5.1	8.7	-94
EJ-SVLG-M-HV-3	0.55 *	0.47	0.08	0.24	0.47	0.88	1.6	2.4	3.5	5.1	8.7	-94

For technical specifications regarding the evacuation time and the consumption at different pressures, please refer to the technical data sheets of the EJ-MEDIUM cartridges, in the two- and three-stage versions

\* The recommended feed pressure is increased by 0.05 Mpa due to the presence of the solenoid valve. This technical solution allows the performance levels stated in the technical data sheets to be reached and does not lead to any increase in the pump's air consumption.

**Identification codes**

Alphanumeric code	Description	Order code
EJ-SVLG-M-LP-2-ISO	EJ-SVLG-MEDIUM-LP-2-ISO vacuum pump with holder and integrated silencer, ready for ISO 15218 valve, G1/4" vacuum port	3030244
EJ-SVLG-M-LP-3-ISO	EJ-SVLG-MEDIUM-LP-3-ISO vacuum pump with holder and integrated silencer, ready for ISO 15218 valve, G1/4" vacuum port	3030245
EJ-SVLG-M-HF-2-ISO	EJ-SVLG-MEDIUM-HF-2-ISO vacuum pump with holder and integrated silencer, ready for ISO 15218 valve, G1/4" vacuum port	3030246
EJ-SVLG-M-HF-3-ISO	EJ-SVLG-MEDIUM-HF-3-ISO vacuum pump with holder and integrated silencer, ready for ISO 15218 valve, G1/4" vacuum port	3030247
EJ-SVLG-M-HV-2-ISO	EJ-SVLG-MEDIUM-HV-2-ISO vacuum pump with holder and integrated silencer, ready for ISO 15218 valve, G1/4" vacuum port	3030248
EJ-SVLG-M-HV-3-ISO	EJ-SVLG-MEDIUM-HV-3-ISO vacuum pump with holder and integrated silencer, ready for ISO 15218 valve, G1/4" vacuum port	3030249
EJ-SVLG-M-LP-2-ISO-NC	EJ-SVLG-MEDIUM-LP-2-ISO vacuum pump with holder and integrated silencer, NC 3/2 x2 solenoid valve for vacuum, 24Vdc, 2.5W, M12 5-pin, IP54, G1/4" vacuum port	3030250
EJ-SVLG-M-LP-3-ISO-NC	EJ-SVLG-MEDIUM-LP-3-ISO vacuum pump with holder and integrated silencer, NC 3/2 x2 solenoid valve for vacuum, 24Vdc, 2.5W, M12 5-pin, IP54, G1/4" vacuum port	3030251
EJ-SVLG-M-HF-2-ISO-NC	EJ-SVLG-MEDIUM-HF-2-ISO vacuum pump with holder and integrated silencer, NC 3/2 x2 solenoid valve for vacuum, 24Vdc, 2.5W, M12 5-pin, IP54, G1/4" vacuum port	3030252
EJ-SVLG-M-HF-3-ISO-NC	EJ-SVLG-MEDIUM-HF-3-ISO vacuum pump with holder and integrated silencer, NC 3/2 x2 solenoid valve for vacuum, 24Vdc, 2.5W, M12 5-pin, IP54, G1/4" vacuum port	3030253
EJ-SVLG-M-HV-2-ISO-NC	EJ-SVLG-MEDIUM-HV-2-ISO vacuum pump with holder and integrated silencer, NC 3/2 x2 solenoid valve for vacuum, 24Vdc, 2.5W, M12 5-pin, IP54, G1/4" vacuum port	3030254
EJ-SVLG-M-HV-3-ISO-NC	EJ-SVLG-MEDIUM-HV-3-ISO vacuum pump with holder and integrated silencer, NC 3/2 x2 solenoid valve for vacuum, 24Vdc, 2.5W, M12 5-pin, IP54, G1/4" vacuum port	3030255

Introduction

Vacuum theory

Suction cups

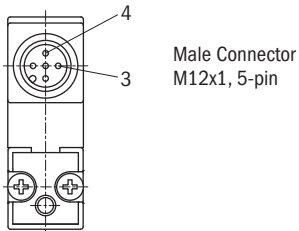
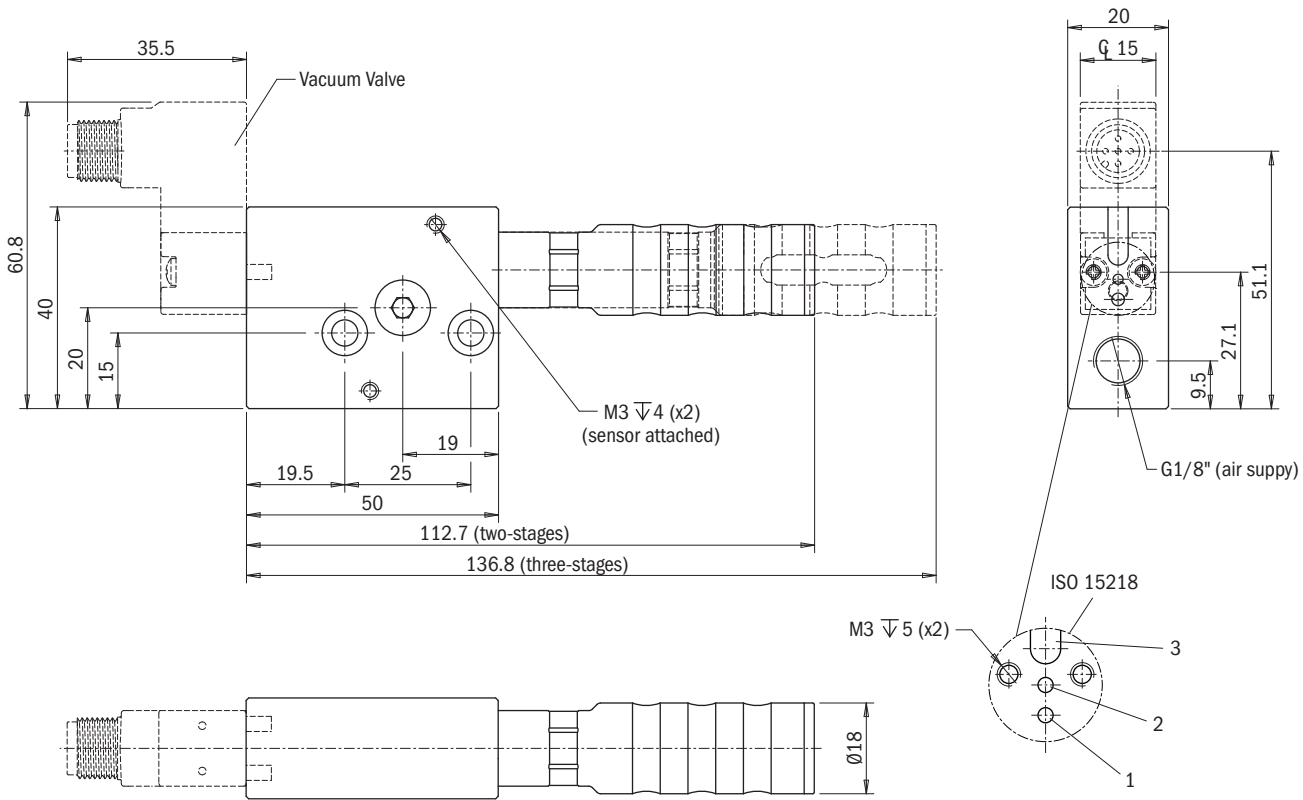
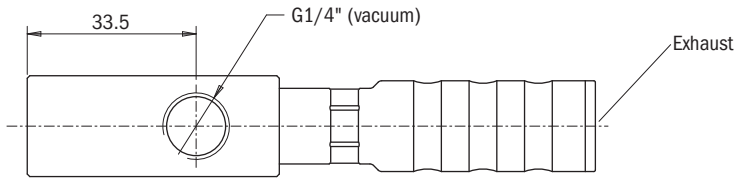
Vacuum pumps

Vacuum gripping systems

Customised solutions

Suspensions

System accessories



n°	Function
1	In
2	Out
3	Exhaust

Pin	Function		Color
3	COMMAND	+24 V	Blue
4	GND	0	Black