

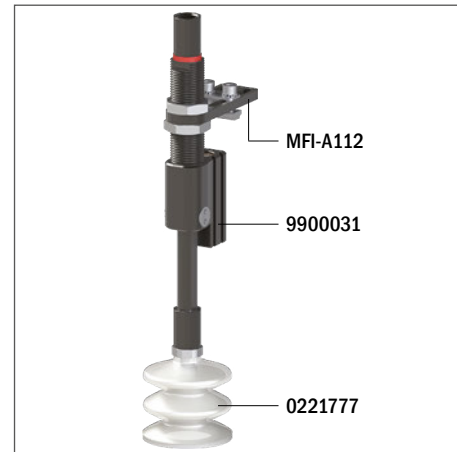
# Suction cups / FDA-compliant silicone with ring in silicone foam

## VG.LB53F.SFO bellows suction cups in FDA-compliant silicone with silicone foam ring

- Ideal to handle uneven and porous surfaces
- High adaptability on rough wood panels, corrugated sheet metal and non-slip sheet metal
- Ring in mark-free silicone foam
- They enable to compensate for differences in height



Application example

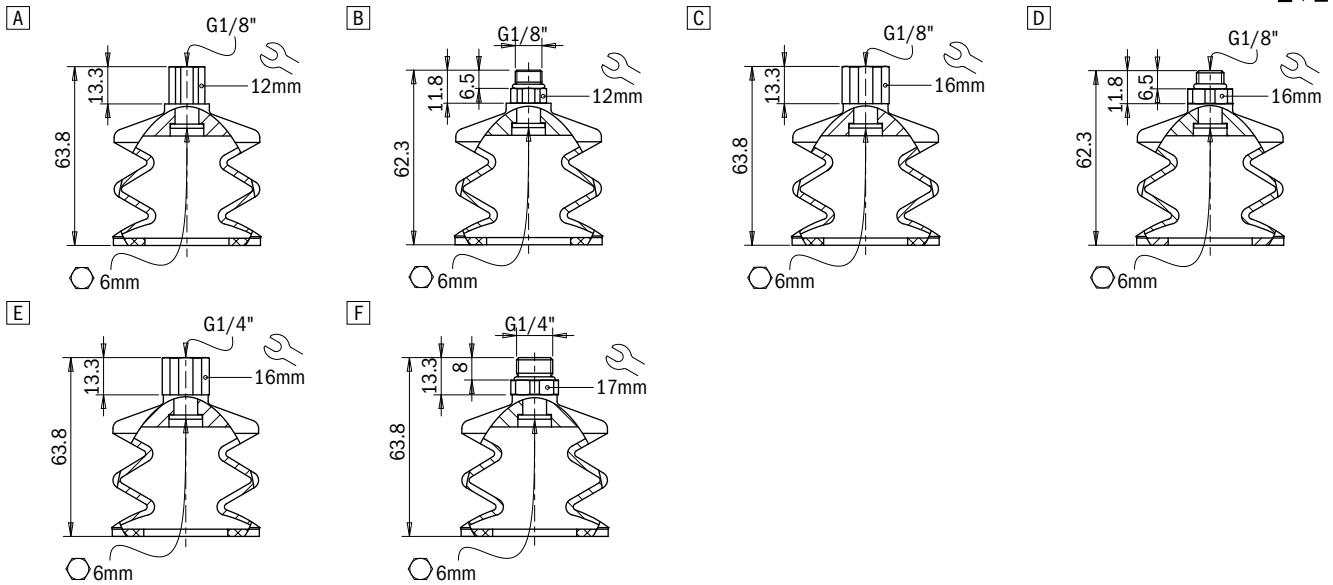


### Technical features

| Material          | Color       | Hardness | Temperature range |
|-------------------|-------------|----------|-------------------|
| Silicone, FDA SIL | Transparent | 50 Shore | -94 - +392 °F     |

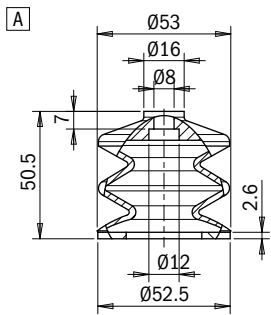
### Identification codes

| Drawing | Alphanumeric code        | Suction cups with fitting  | Order code |
|---------|--------------------------|--|------------|
| A       | VG.LB53F.50.G18F.E12.SFO | VG.LB53 suction cup, FDA-compliant silicone, 50 Shore, G1/8" female, 12 mm hex with silicone foam ring | 0221771    |
| B       | VG.LB53F.50.G18M.E12.SFO | VG.LB53 suction cup, FDA-compliant silicone, 50 Shore, G1/8" male, 12 mm hex with silicone foam ring   | 0221773    |
| C       | VG.LB53F.50.G18F.E16.SFO | VG.LB53 suction cup, FDA-compliant silicone, 50 Shore, G1/8" female, 16 mm hex with silicone foam ring | 0221774    |
| D       | VG.LB53F.50.G18M.E16.SFO | VG.LB53 suction cup, FDA-compliant silicone, 50 Shore, G1/8" male, 16 mm hex with silicone foam ring   | 0221775    |
| E       | VG.LB53F.50.G14F.E16.SFO | VG.LB53 suction cup, FDA-compliant silicone, 50 Shore, G1/4" female, 16 mm hex with silicone foam ring | 0221776    |
| F       | VG.LB53F.50.G14M.E17.SFO | VG.LB53 suction cup, FDA-compliant silicone, 50 Shore, G1/4" male, 17 mm hex with silicone foam ring   | 0221777    |



**Identification codes**

| Drawing | Alphanumeric code | Suction cups   | Order code |
|---------|-------------------|--|------------|
| A       | VG.LB53F.50.SF0   | VG.LB53 suction cup, FDA-compliant silicone, 50 Shore, with silicone foam ring | 0221772    |



**Identification codes**

| Drawing | Alphanumeric code | Fittings                        | Order code |
|---------|-------------------|---------------------------------|------------|
| A       | FT.G18F.E12       | G1/8" female fitting, 12 mm hex | 2321422    |
| B       | FT.G18M.E12       | G1/8" male fitting, 12 mm hex   | 2321424    |
| C       | FT.G18F.E16       | G1/8" female fitting, 16 mm hex | 2321426    |
| D       | FT.G18M.E16       | G1/8" male fitting, 16 mm hex   | 2321428    |
| E       | FT.G14F.E16       | G1/4" female fitting, 16 mm hex | 2321430    |
| F       | FT.G14M.E17       | G1/4" male fitting, 17 mm hex   | 2321432    |

