

## 2-jaw self centering radial pneumatic gripper (series GX-S)

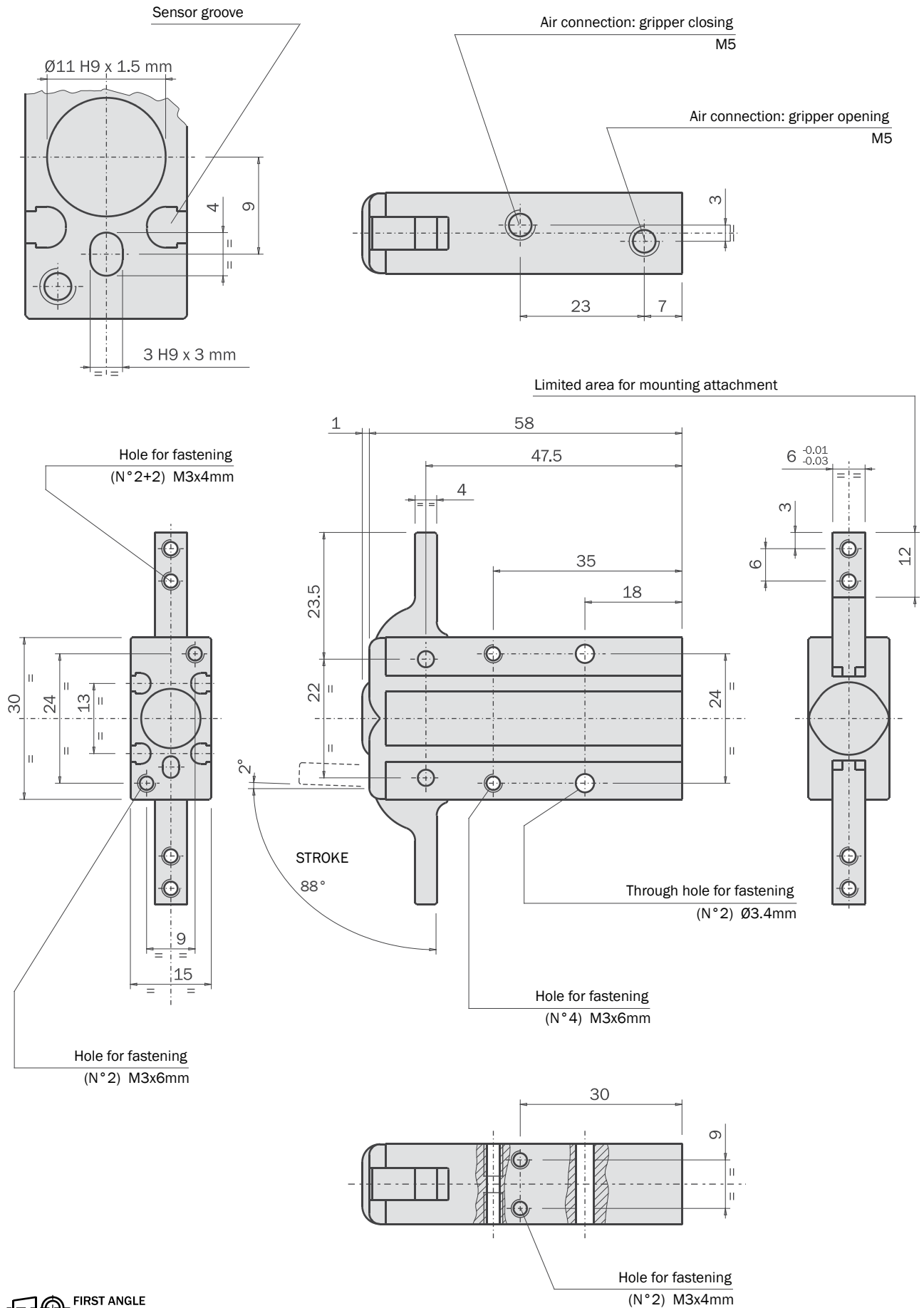
- Double acting.
- Very high gripping force at the end of the closing stroke.
- Long life and reliability, maintenance free.
- Various options for fastening.
- Optional proximity magnetic sensors.
- FDA-H1 food-grade grease.



	GX-10S	GX-16S	GX-20S	GX-25S
Medium	Compressed air in compliance with ISO 8573-1:2010 [7:4:4]			
Operating pressure range	2 ÷ 8 bar			
Operating temperature range	5° ÷ 60°C.			
Opening maximum torque at 6 bar on each jaw	35 Ncm	120 Ncm	230 Ncm	430 Ncm
Opening maximum total torque at 6 bar	70 Ncm	240 Ncm	460 Ncm	860 Ncm
Closing maximum torque at 6 bar on each jaw	26 Ncm	105 Ncm	210 Ncm	400 Ncm
Closing maximum total torque at 6 bar	52 Ncm	210 Ncm	420 Ncm	800 Ncm
Stroke	2x90°	2x90°	2x90°	2x90°
Maximum working frequency	2 Hz	2 Hz	2 Hz	2 Hz
Cycle air consumption	2 cm <sup>3</sup>	6 cm <sup>3</sup>	11 cm <sup>3</sup>	22 cm <sup>3</sup>
Closing time without load	0.04 s	0.08 s	0.10 s	0.08 s
Repetition accuracy	0.05°	0.05°	0.05°	0.05°
Weight	70 g	140 g	290 g	510 g

**Dimensions (mm)**

**GX-10S**

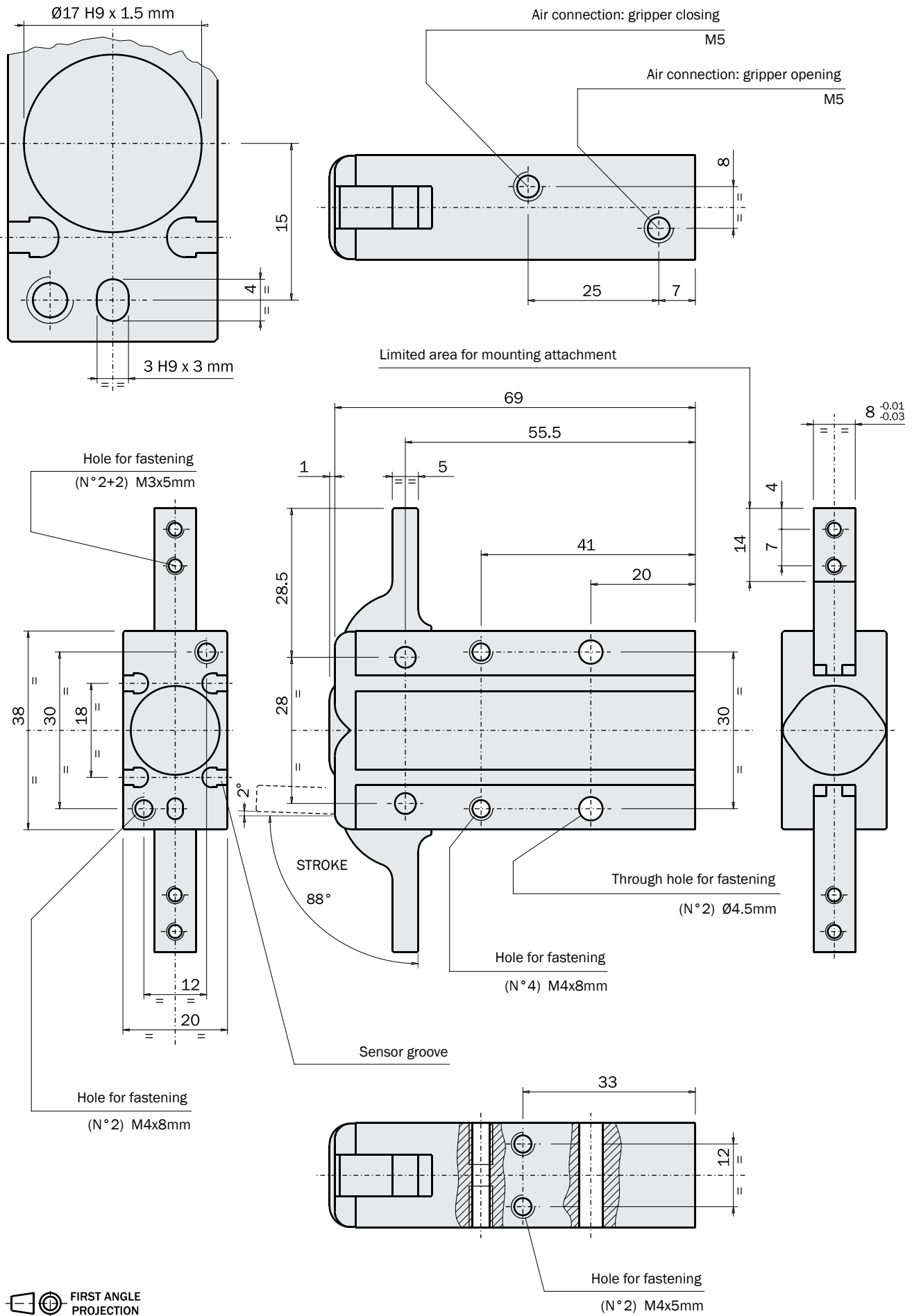


FIRST ANGLE PROJECTION

09/2022

Dimensions (mm)

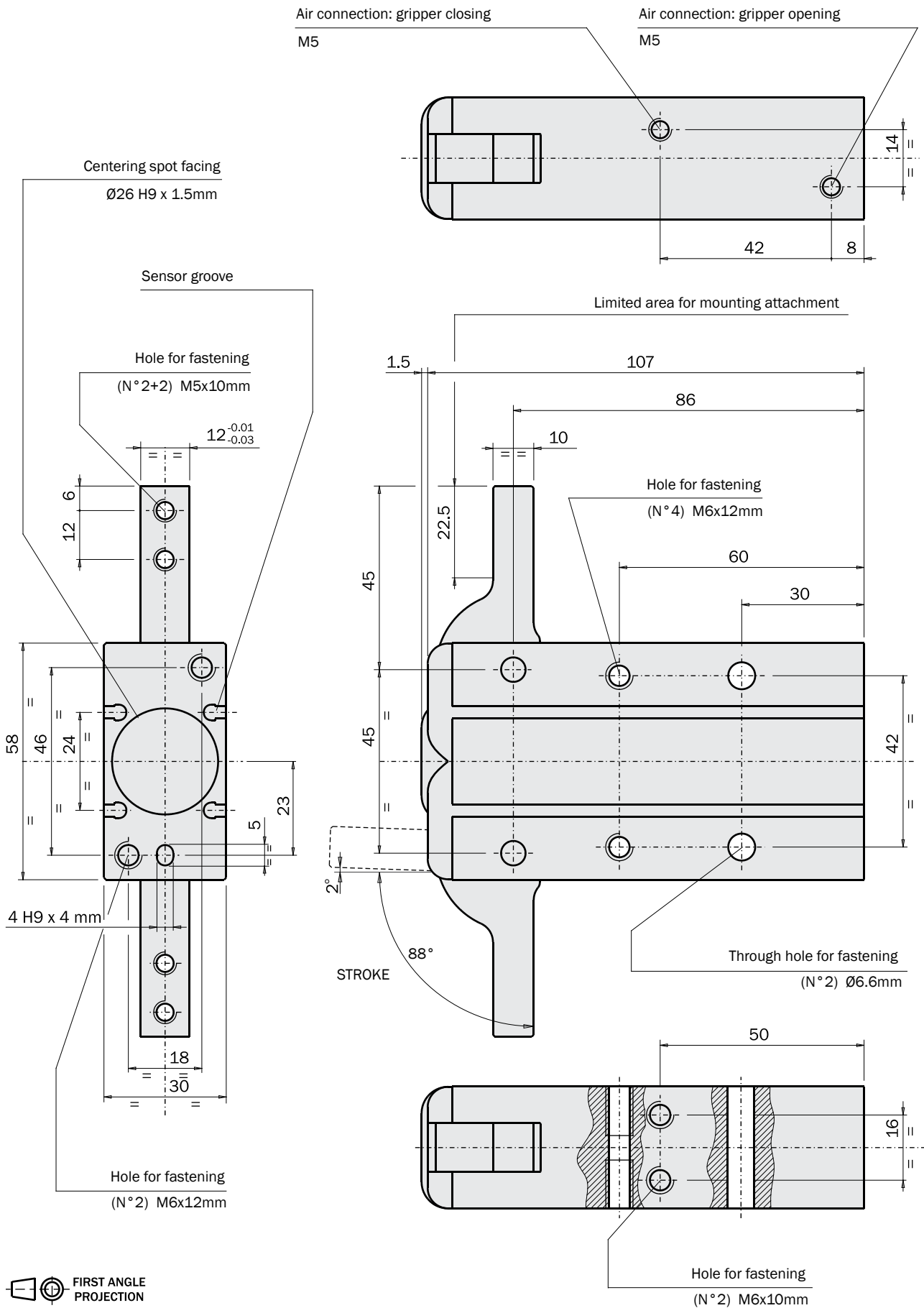
GX-16S



FIRST ANGLE PROJECTION

Rotary Units  
Quick Changer  
Profiles and Brackets  
Grippers  
Linear Actuators  
Suspensions  
Nippers  
Robot Kit  
Options  
Sensors

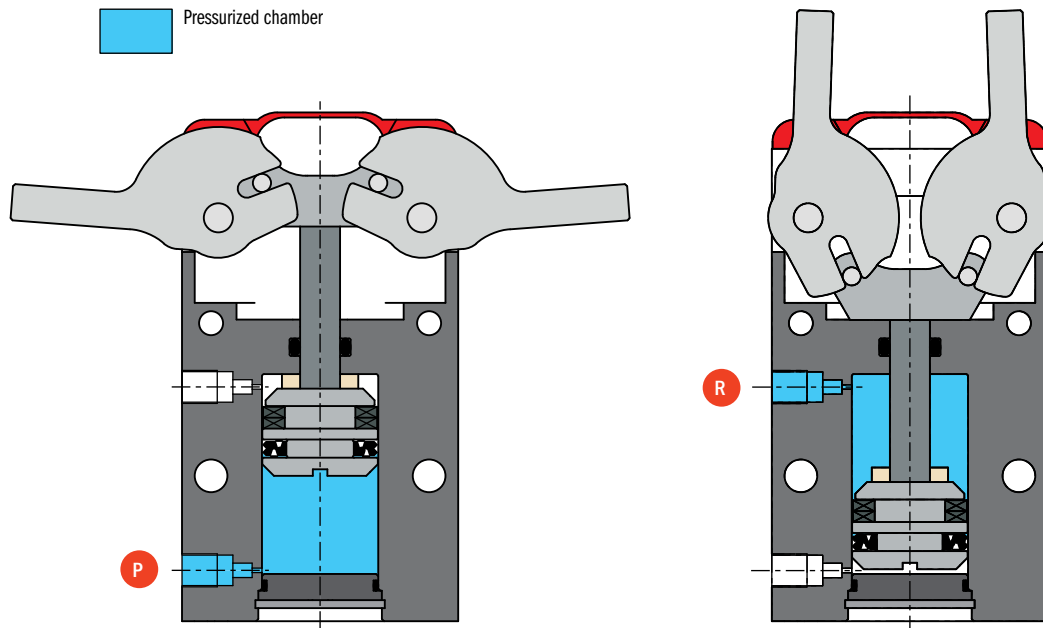




FIRST ANGLE PROJECTION

**Gripping**

As the gripper has a double acting motion, it can be used like internal or external gripping.



The gripping force depends on the shape of the gripping tools.

