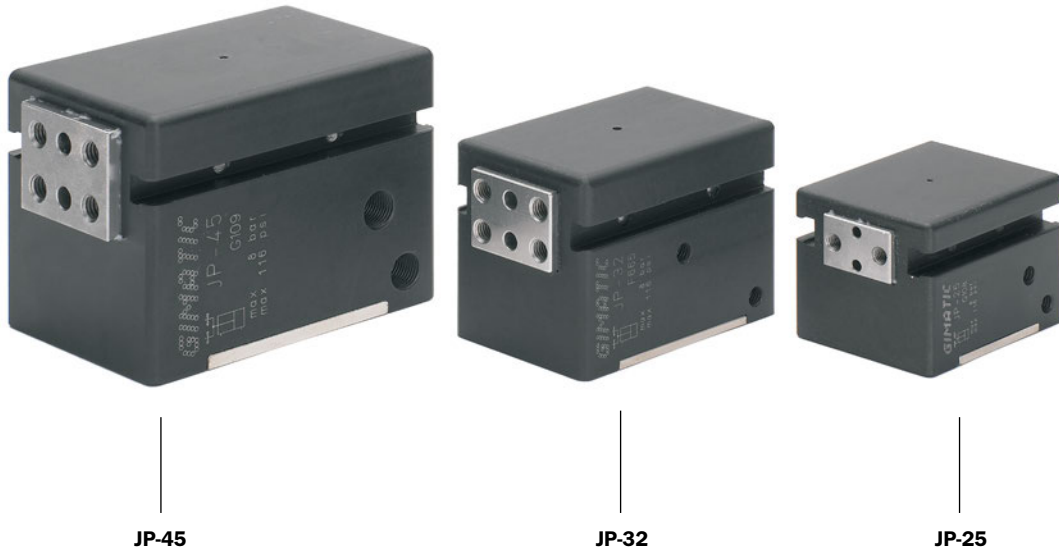


**2-jaw self-centering pneumatic parallel gripper (series JP)**

- Double acting.
- High gripping force.
- Suitable for heavy duty applications.
- Optional magnetic sensors.
- FDA-H1 food-grade grease.



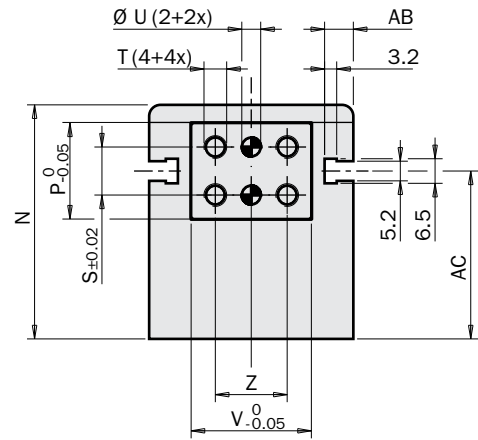
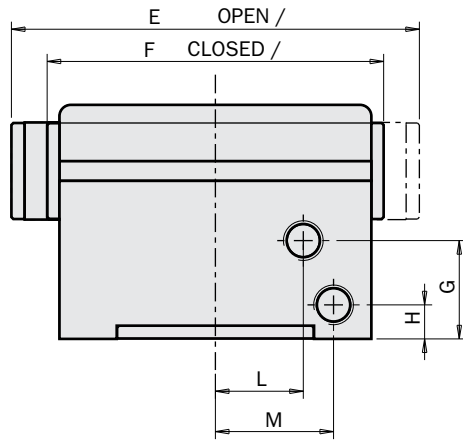
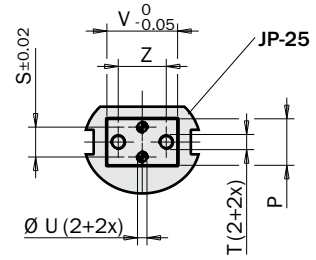
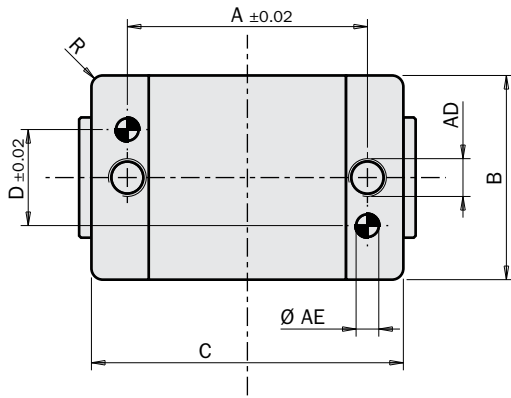
JP-45

JP-32

JP-25

	JP-25	JP-32	JP-45
Medium	Compressed air in compliance with ISO 8573-1:2010 [7:4:4]		
Operating pressure range	2.5 ÷ 8 bar		
Operating temperature range	5° ÷ 60° C.		
Opening gripping force at 6 bar on each jaw	135 N	350 N	500 N
Opening total gripping force at 6 bar	270 N	700 N	1000 N
Closing gripping force at 6 bar on each jaw	120 N	300 N	465 N
Closing total gripping force at 6 bar	240 N	600 N	930 N
Total stroke	9.5 mm	12 mm	18.9 mm
Maximum working frequency	3 Hz	3 Hz	3 Hz
Cycle air consumption	6 cm <sup>3</sup>	16 cm <sup>3</sup>	20 cm <sup>3</sup>
Closing time without load	0.02 s	0.04 s	0.09 s
Repetition accuracy	0.02 mm	0.02 mm	0.02 mm
Weight	240 g	450 g	1050 g

**Dimensions (mm)**



	A	B	C	D	E	F	G	H	L	M	N	P	R	S	T	U	V	Z	AB	AC	AD	AE	AF	AG
<b>JP-25</b>	38.1	38.1	50.8	25.4	63.5	54	14.8	6	11.3	18.1	35.9	12.3	2	7.9	M4 x6.5mm	Ø2.5H8 x6mm	18.7	12.7	6.2	26.3	M6 x12mm	Ø5H8 x6mm	-	-
<b>JP-32</b>	50.8	41.3	63.5	19	80	68	22.5	6	-	24	47.3	18.7	3	9.5	M5 x10mm	Ø4H8 x10mm	25	17.5	4.6	33.2	M6 x12mm	Ø5H8 x6mm	-	-
<b>JP-45</b>	63.5	54	82.5	25.4	107.9	89	26	9	23.2	31.2	61.9	25.4	3	12.7	M6 x12mm	Ø5H8 x10mm	31.8	19	7.6	44.4	M10 x18mm	Ø6H8 x12mm	M5x4 mm	Ø5H9x4 x12mm

