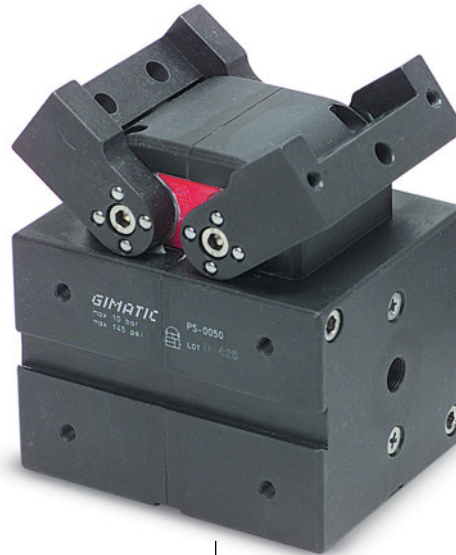


## 2-jaw self-centering radial pneumatic gripper (series PS)

- Double acting radial motion.
- The gripping force is totally available on both directions from 0° to 90°.
- Light weight, due to its alloy construction.
- Rugged construction.
- Well protected against dusty environment.
- FDA-H1 food-grade grease.



PS-0030



PS-0050

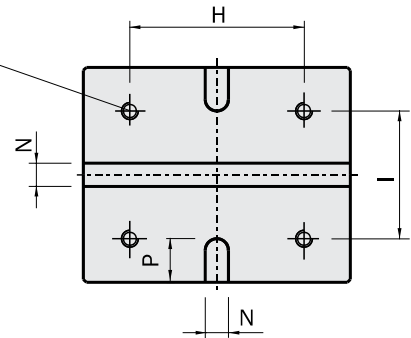
	PS-0030	PS-0050
Medium	Compressed air in compliance with ISO 8573-1:2010 [7:4:4]	
Operating pressure range	2 ÷ 8 bar	
Operating temperature range	5 ÷ 60 °C.	
Stroke	2 x 91°	
Gripping torque at 6 bar on each jaw	200 Ncm	600 Ncm
Total gripping torque at 6 bar	400 Ncm	1200 Ncm
Maximum working frequency	2 Hz	1 Hz
Cycle air consumption	37 cm <sup>3</sup>	105 cm <sup>3</sup>
Closing time without load	0.08 s	0.1 s
Repetition accuracy	0.1°	0.1°
Weight	750 g	1100 g

**Dimensions (mm)**



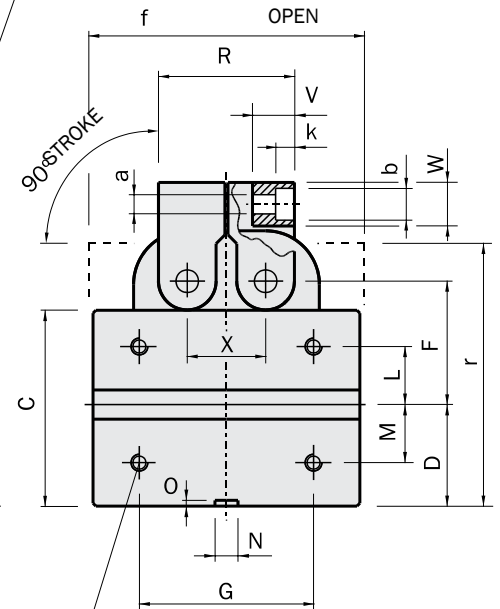
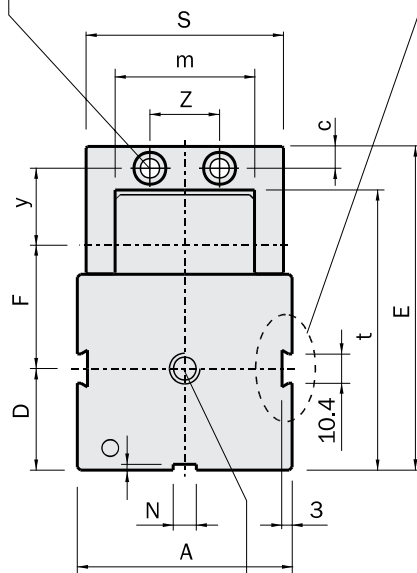
	PS-0030	PS-0050
A	49	74
B	81	92
C	45	67.5
D	24	35
E	83	111.5
F	30	42.5
G	50	60
H	65	60
I	39	44
L	11.5	20
M	13.5	20
N	6 <sup>+0.05</sup>	8 <sup>+0.05</sup>
O	2	2
P	12.5	15
Q	M4x8	M5x10
R	41.8	46.8
S	48	68
T	38	58
U	10.2	11.5
V	12.4	14.4
Z	20	24
J	M4x5	M5x8
a	Ø5.5	Ø6.6
b	Ø9	Ø11
c	6	7.5
d	1/8 Gas	1/8 Gas
e	6.4	7.2
f	82	95
g	M4x10	M5x15
h	Ø5H8x12	Ø6H8x15
m	31	48
q	20.3	22.8
r	65.5	90.5
t	70.5	96
k	5.5	6.5
y	23	26.5
w	12	15
x	24	27

Threaded hole for gripper fastening  
(N°4) Q



Sensor groove

Dowel pin hole for gripping tool



Air connection  
(N°2) d

Threaded hole for gripper fastening  
(N°4+4) J

Dowel pin hole for gripping tool  
(N°1+1) h

Dowel pin hole for gripping tool  
(N°2+2) g

