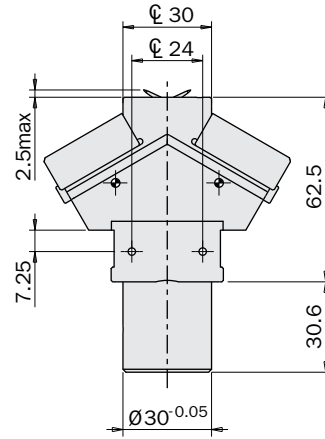
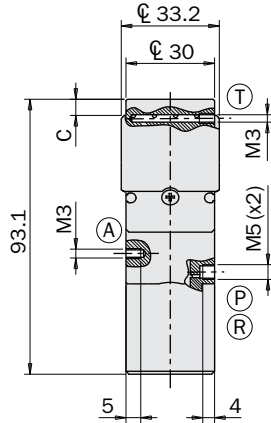
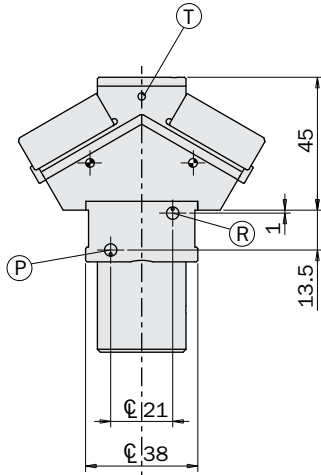


Self-centering pneumatic needle gripper series PT

- 4 needles (PT25) or 8 needles (PT28) with 2mm diameter.
- Suitable for plastics, textile and food industry.
- Double acting.
- Needle simultaneous stroke adjustment (1).
- Several mounting accessories (2).
- PT25: Large through hole (3).
- PT28: Blow-off port (T) for cleaning and releasing.
- PT28: Pad in PTFE (4) for hot surface contact.
- PT28: Optional magnetic sensors (5).

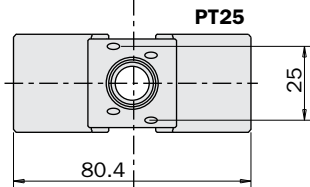
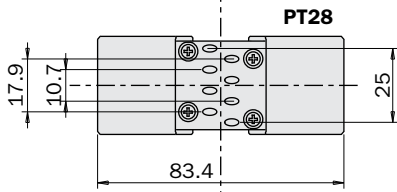


(A) Hole for fastening

(P) Needles in

(T) Air connection

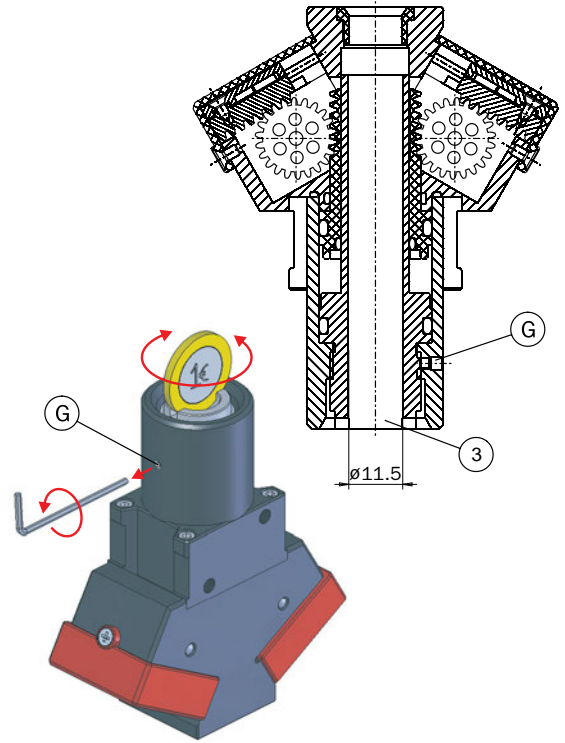
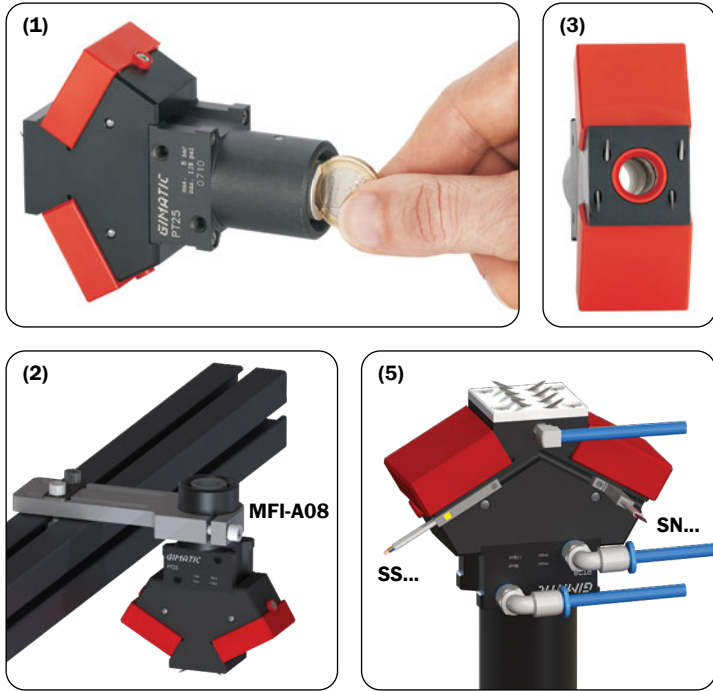
(R) Needles out



	PT25	PT28
Medium	Compressed air in compliance with ISO 8573-1:2010 [7:4:4]	
Pressure range	3 ÷ 8 bar	
Temperature range	5° ÷ 60 °C.	
Opening total gripping force at 6 bar	90 N	
Needle stroke	1 ÷ 7 mm	
Cycle air consumption	3.5 cm ³	
Weight	165 g	182 g

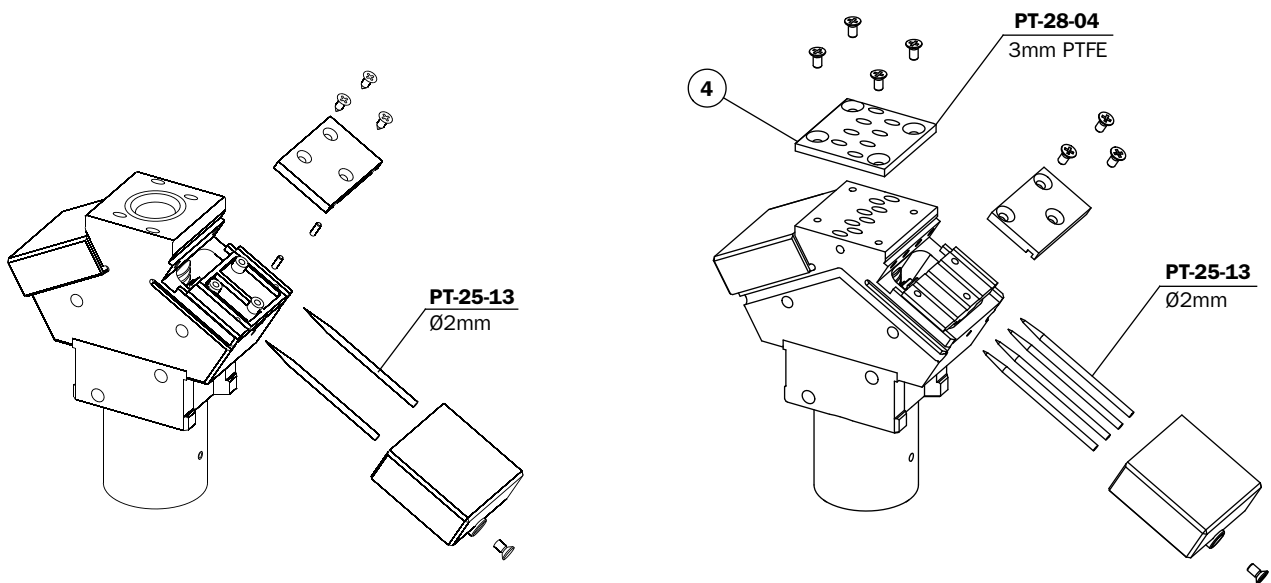
Stroke adjustment

The gripper is self-centering.
Therefore the piston end-stroke determines the stroke of all needles.
It is possible to adjust this stroke, by an 1-euro coin, after the grub screw (G) has been loosened.



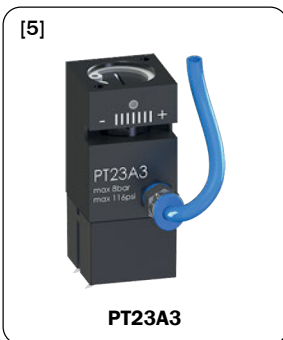
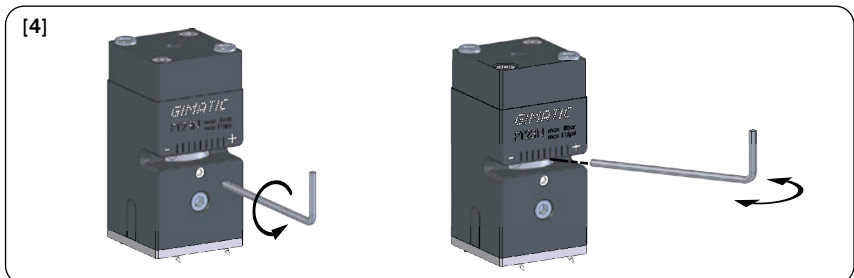
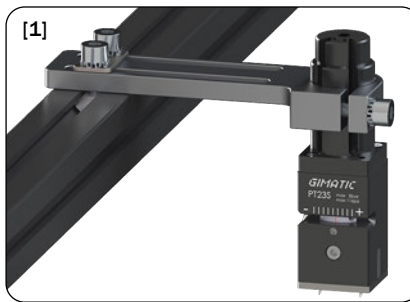
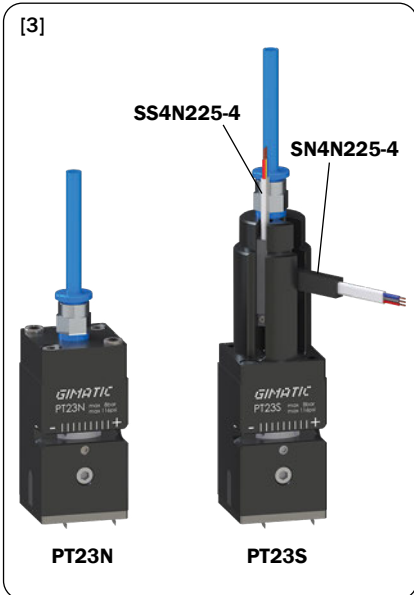
Maintenance

The needles can be easily replaced, when necessary.
The ordering code of one needle is PT-25-13.
After five million cycles re-lubricate the gripper.
Suggested grease: BERULUB FG-H 2 SL
(Lubricant NSF H1 Registration No. 135919).



Self-centering pneumatic needle mini-gripper series PT

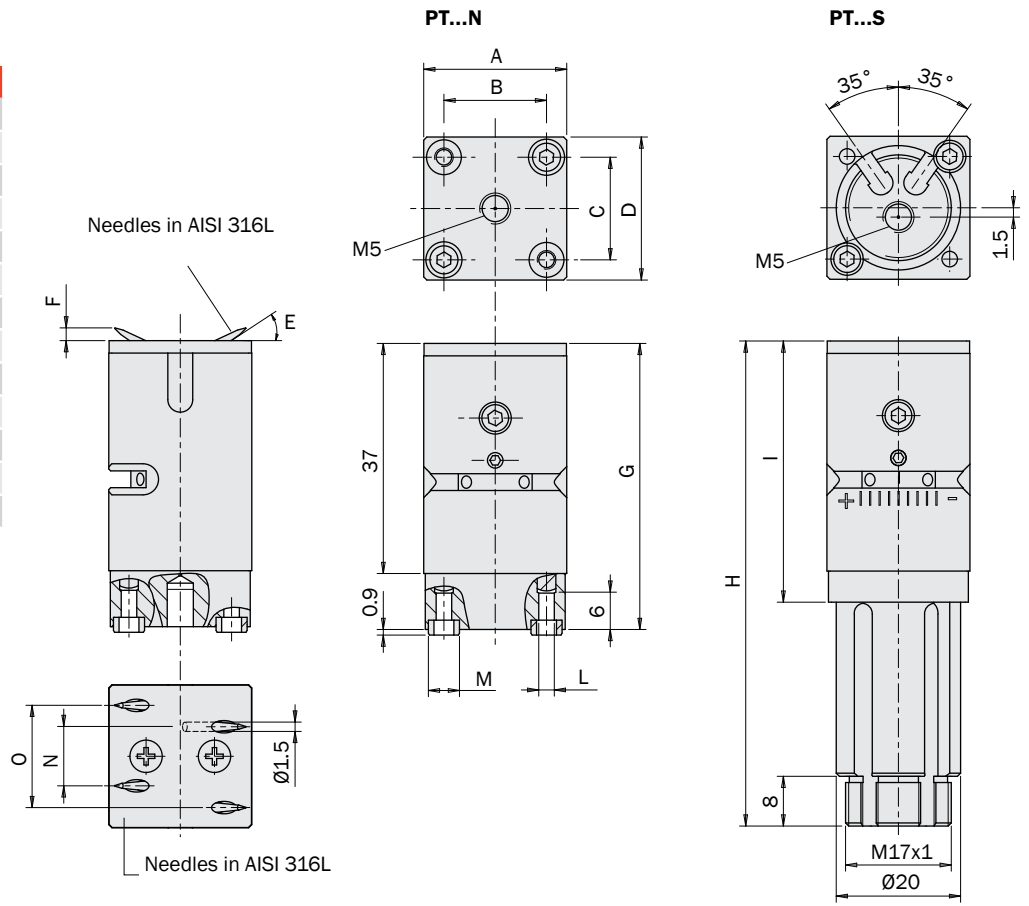
- 4 needles with diameter 1.5mm.
- Suitable for plastics, textile and food industry.
- Single acting (normally closed).
- Needle simultaneous stroke adjustment[4].
- PT23S and PT30S: clamp mounting [1].
- PT23A3 PT23N and PT30N: plate mounting [2].
- Optional magnetic sensors for PT23S and PT30S [3].
- PT23A3 with side air parts [5].



	PT23A3	PT23N	PT23S	PT30N	PT30S
Medium	Compressed air in compliance with ISO 8573-1:2010 [7:4:4]				
Pressure range	3 ÷ 8 bar				
Temperature range	5° ÷ 60 °C.				
Opening total gripping force at 6 bar		40 N			50 N
Needle stroke		0 ÷ 4 mm			0 ÷ 7 mm
Cycle air consumption		0.6 cm ³			1.1 cm ³
Weight	63 g	74 g	92 g	115 g	134 g

Dimensions (mm)

	PT23...	PT30..
A	23	28
B	16.5	18
C	16.5	18
D	23	28
E	30°	35°
F	0÷2	0÷4
G	46.5	54
H	78.5	87.5
I	42.5	51.5
L	M3(x2)	M4(2x)
M	5 h8 (x2)	7 h8 (2x)
N	9.5	9
O	16.5	18



Dimensions (mm)

	PT23A3
A	23
B	16.5
C	16.5
D	23
E	30°
F	1÷2
G	52
H	30
I	6.4
L	M3(x2)
M	-
N	8
O	15.6

