

**2-jaw self-centering parallel pneumatic gripper (series SP)**

- Double-acting drive.
- Backlash adjusting system.
- Maintenance-free long life and reliability.
- Various mounting and feeding options.
- Optional magnetic sensors.
- FDA-H1 food-grade grease.



SP-20

SP-25

SP-32

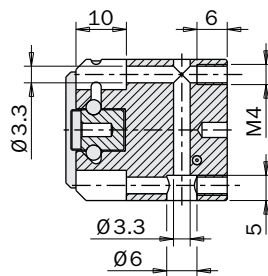
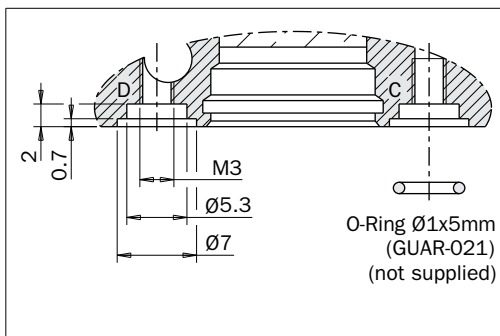
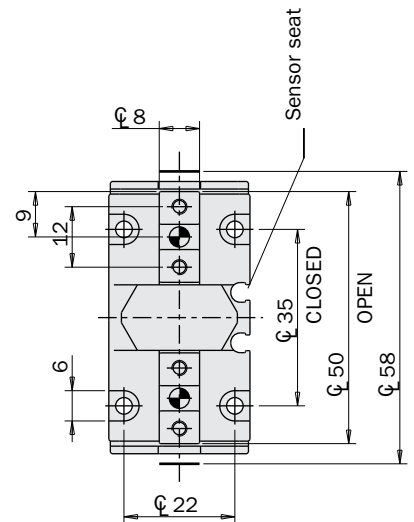
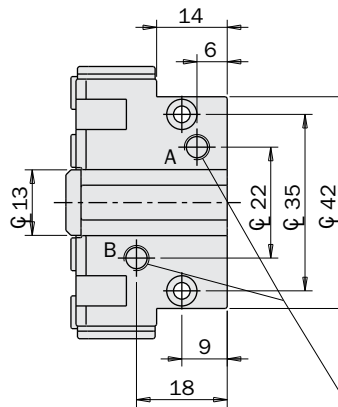
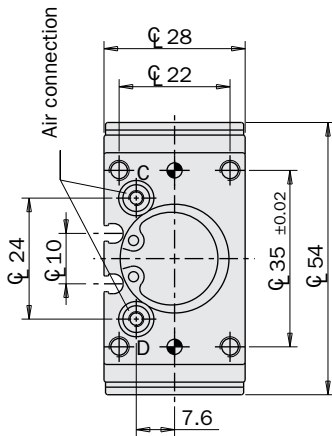
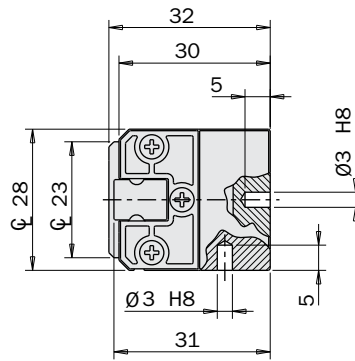
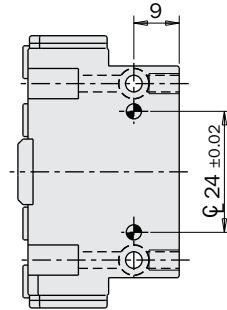
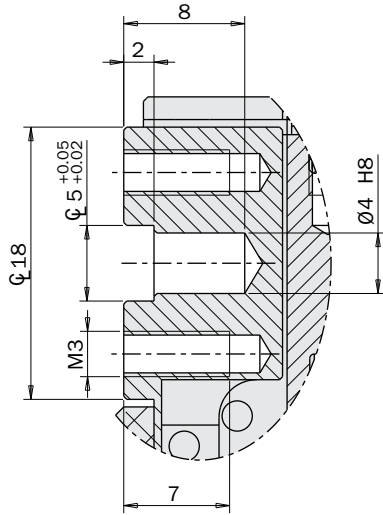
SP-40

	SP-20	SP-25	SP-32	SP-40
Medium	Compressed air in compliance with ISO 8573-1:2010 [7:4:4]			
Operating pressure range	2.5 ÷ 8 bar			
Operating temperature range	5° ÷ 60°C.			
Opening gripping force at 6 bar on each jaw	70 N	120 N	220 N	350 N
Total opening gripping force at 6 bar	140 N	240 N	440 N	700 N
Closing gripping force at 6 bar on each jaw	65 N	110 N	200 N	320 N
Total closing gripping force at 6 bar	130 N	220 N	400 N	640 N
Total stroke (±0.2 mm)	8 mm	12 mm	16 mm	20 mm
Maximum continuous operating frequency	3 Hz	2 Hz	2 Hz	2 Hz
Air consumption per cycle	3 cm <sup>3</sup>	6 cm <sup>3</sup>	13 cm <sup>3</sup>	31 cm <sup>3</sup>
Closing time without load	0.03 s	0.05 s	0.05 s	0.05 s
Maximum repeatability tolerance	±0.02 mm	±0.02 mm	±0.02 mm	±0.02 mm
Weight	105 g	210 g	380 g	600 g

**Dimensions (mm)**

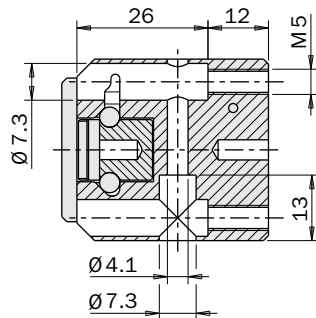
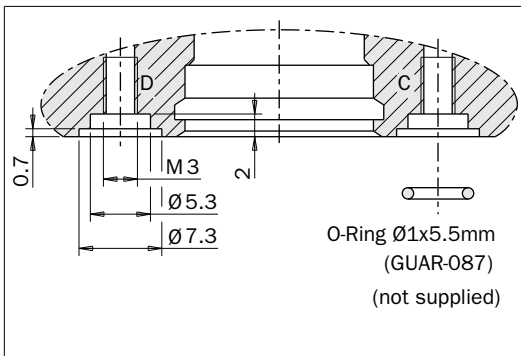
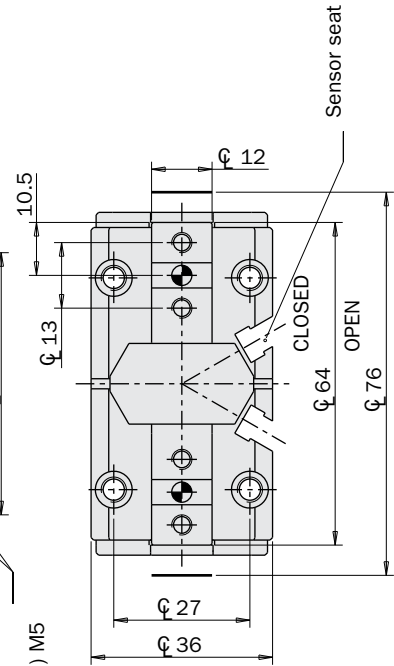
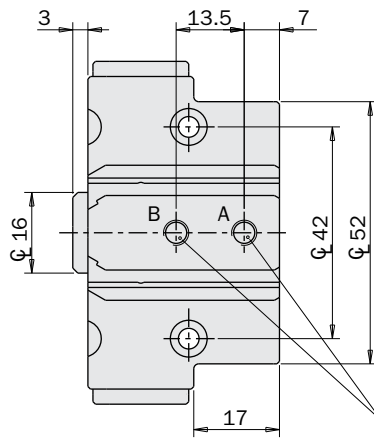
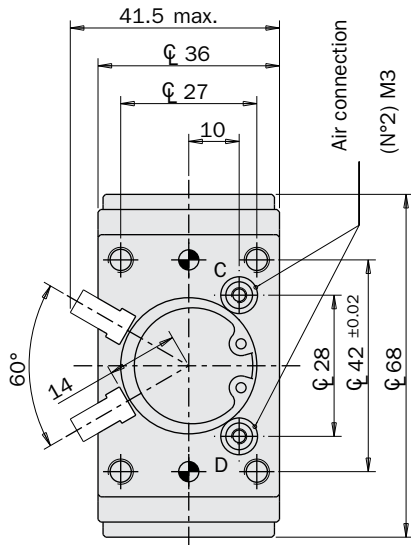
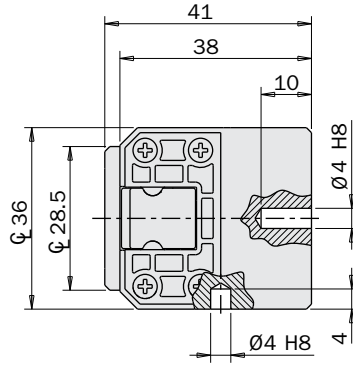
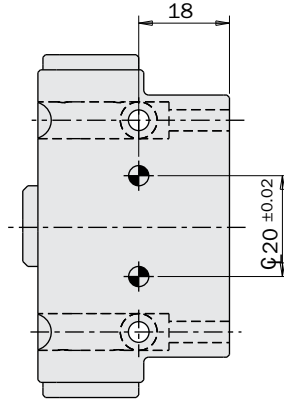
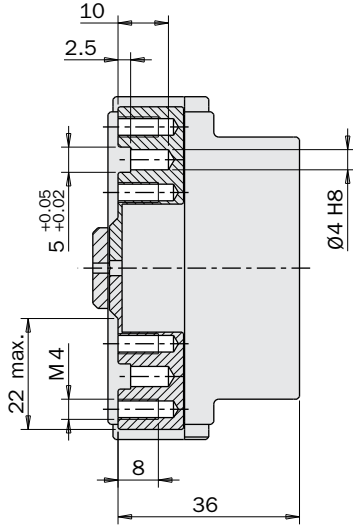
**SP-20**

Jaw cross section



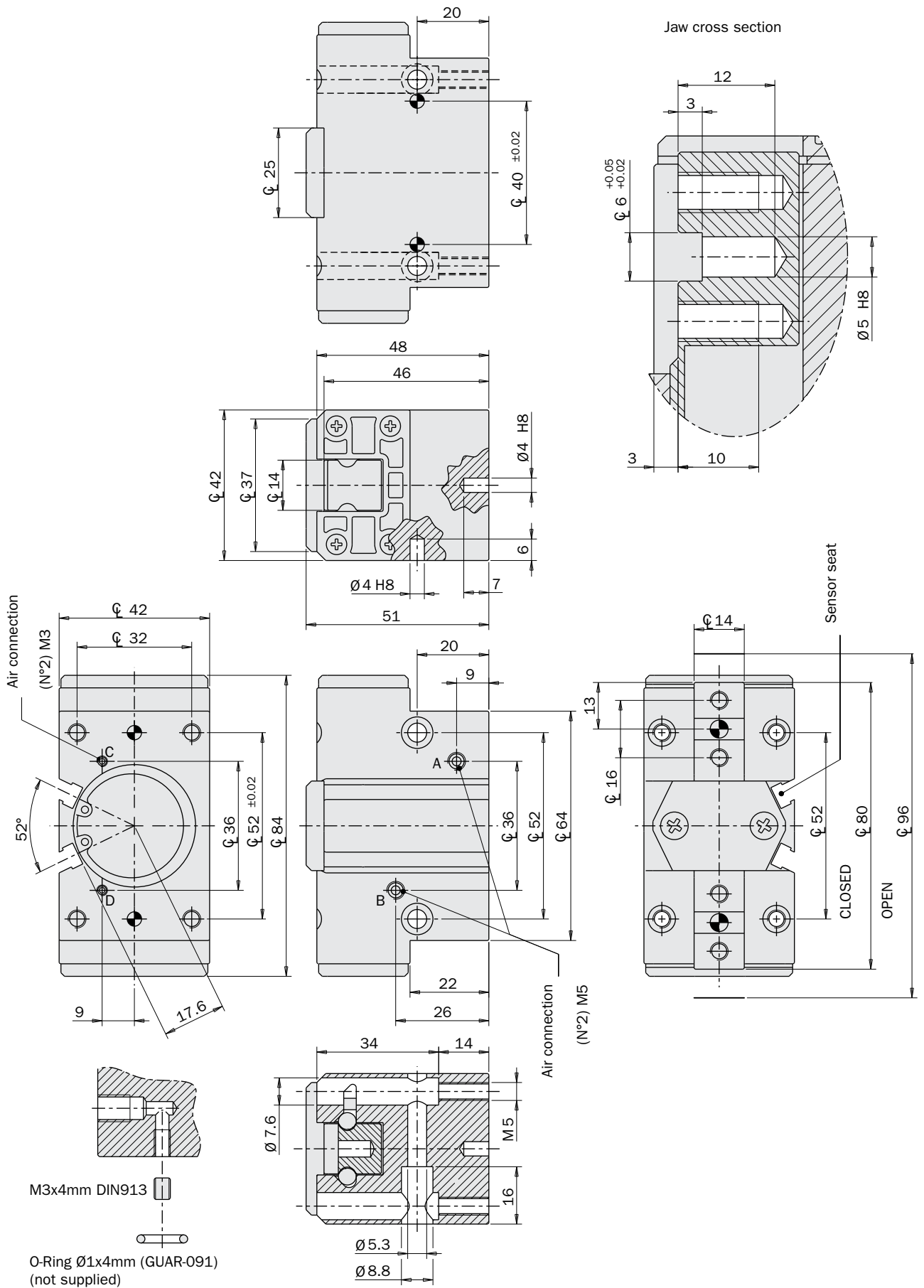
Air connection  
(N°2) M5

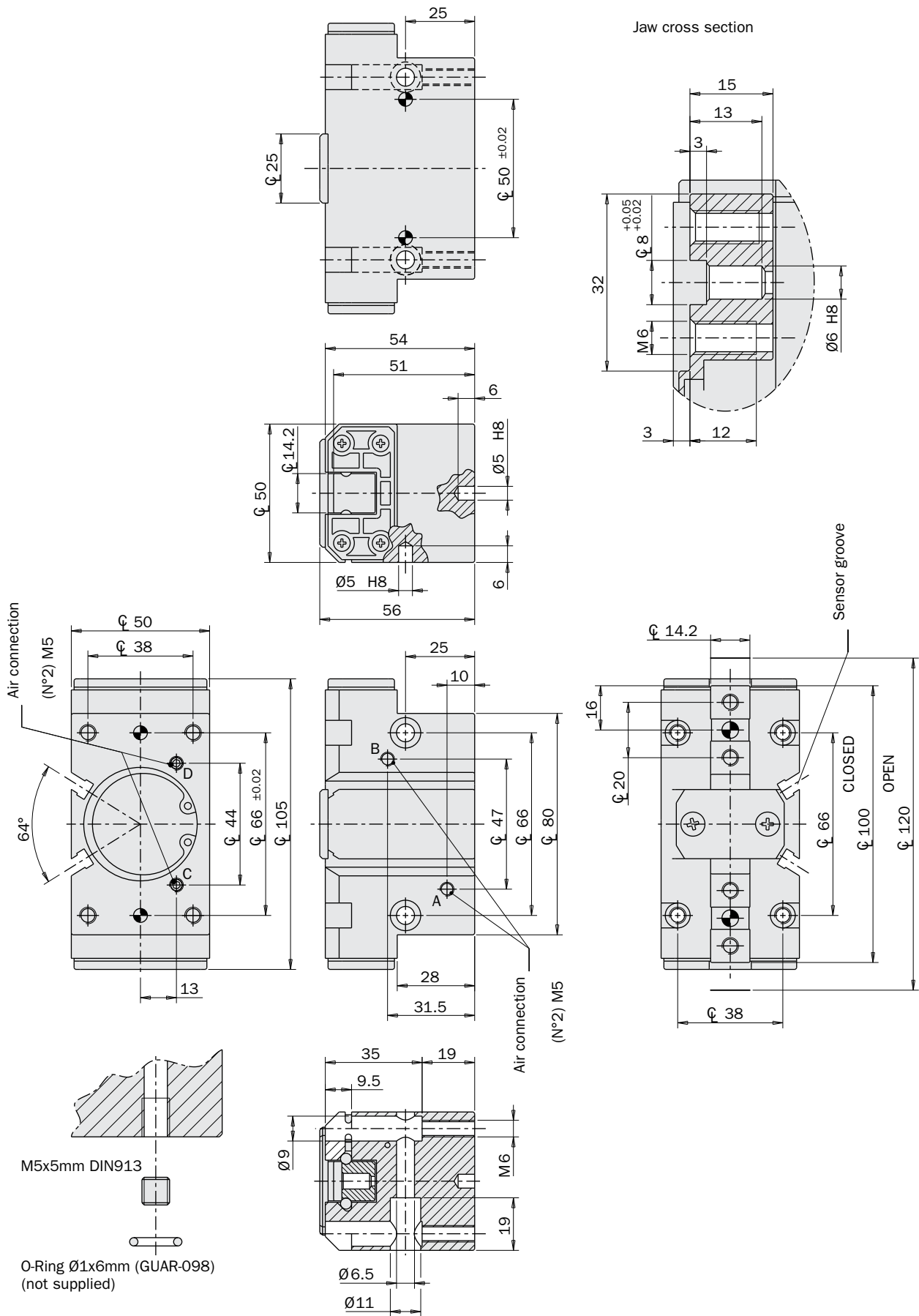
Jaw cross section



**Dimensions (mm)**

**SP-32**



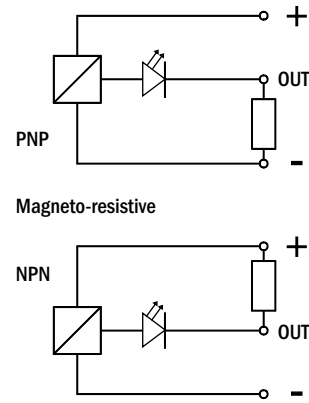


**Sensors**

The operating position is detected by magnetic proximity sensors (optional) through a magnet placed on the piston.

The use of magnetic proximity sensors is to be avoided in the vicinity of large masses of ferromagnetic material or intense magnetic fields as this may cause detection problems.

The sensors that can be used are:



			SP-20 ⌋	SP-25 / SP-32 / SP-40 ⌋
SL4N225-G	PNP	2.5m cable	<input type="checkbox"/>	<input checked="" type="checkbox"/>
SL4M225-G	NPN		<input type="checkbox"/>	<input checked="" type="checkbox"/>
SL3N203-G	PNP	M8 connector	<input type="checkbox"/>	<input checked="" type="checkbox"/>
SL3M203-G	NPN		<input type="checkbox"/>	<input checked="" type="checkbox"/>
SN4N225-G	PNP	2.5m cable	<input checked="" type="checkbox"/>	<input checked="" type="checkbox"/> (*)
SN4M225-G	NPN		<input type="checkbox"/>	<input type="checkbox"/>
SN3N203-G	PNP	M8 connector	<input checked="" type="checkbox"/>	<input checked="" type="checkbox"/> (*)
SN3M203-G	NPN		<input type="checkbox"/>	<input type="checkbox"/>
SS4N225-G	PNP	2.5m cable	<input checked="" type="checkbox"/>	<input checked="" type="checkbox"/> (*)
SS4M225-G	NPN		<input type="checkbox"/>	<input type="checkbox"/>
SS3N203-G	PNP	M8 connector	<input checked="" type="checkbox"/>	<input checked="" type="checkbox"/> (*)
SS3M203-G	NPN		<input type="checkbox"/>	<input type="checkbox"/>

(\*) Using the adapter SS.004.000 supplied with the sensor.

