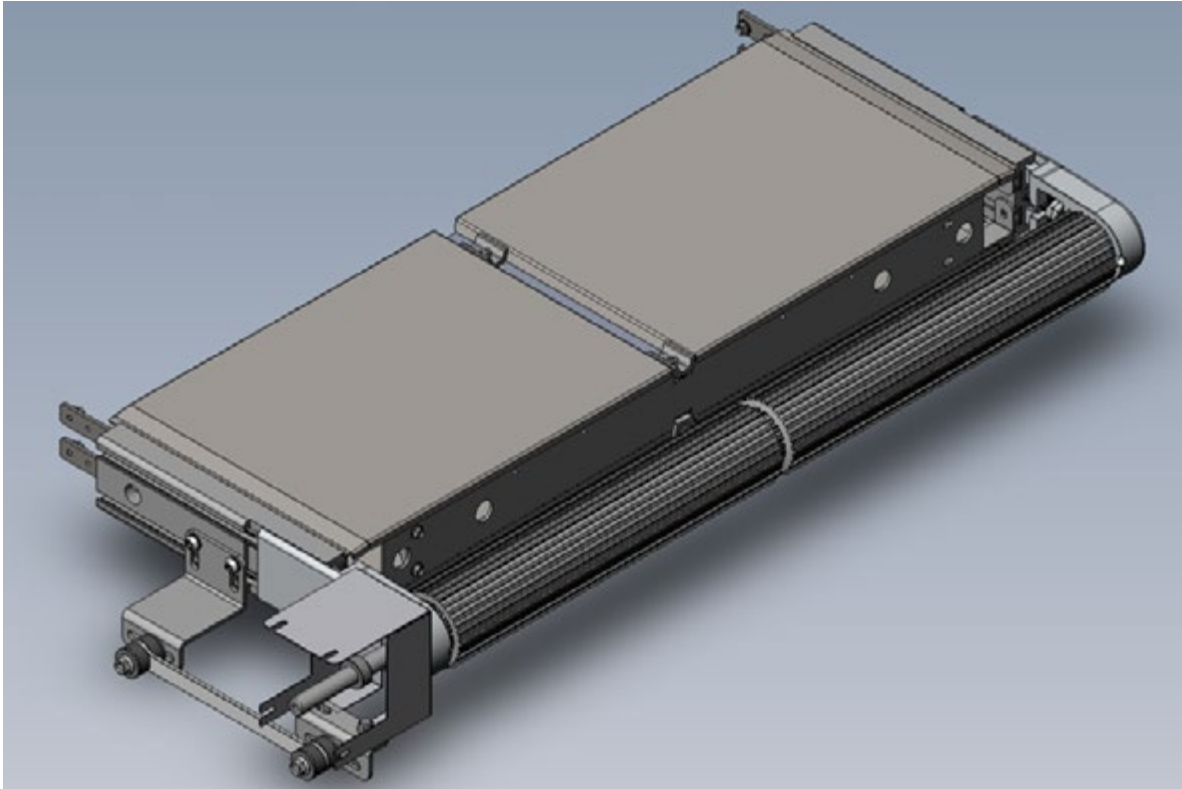


# EA Conveyor Drive Head Change Instructions

(Timing Belt to Direct Drive)



# EA Conveyor

## EA Conveyor Drive Head Change Instructions

(Timing Belt to Direct Drive)



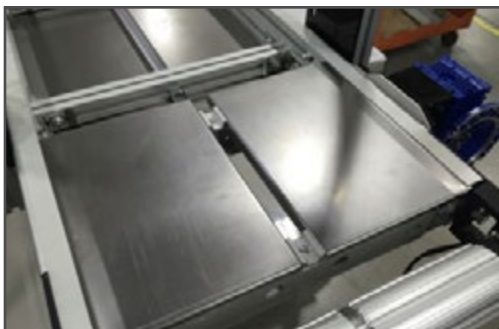
(Fig. 1)



(Fig. 2)



(Fig. 3)



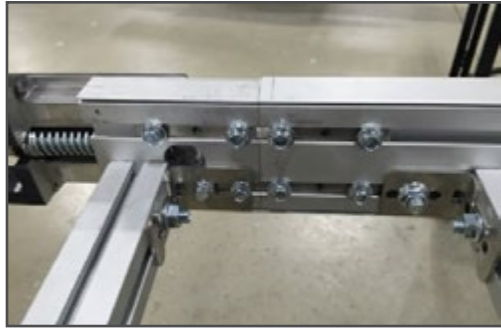
(Fig. 4)

1. Remove side rails at the drive end of the conveyor (Fig. 1)
2. Operate conveyor until conveyor belt lacing appears at the drive end of the conveyor. (Fig. 2)
3. Stop conveyor and unplug the conveyor. (If hard wired preform LOTO to prevent accidental start up of the machine)
4. Relieve conveyor belt tension by tightening tension bolts in the tail (non-drive) end of the conveyor. (Fig. 3)
5. Remove belt lacing and roll belt back exposing the drive head of the conveyor.
6. Remove the (2) ¼" flat head screws holding the slide trays on the underside of the conveyor. (Fig. 4)
7. Remove slide tray retainers and remove both bottom trays. (retain all parts for re-assembly later) (Fig. 4)

## EA Conveyor

### EA Conveyor Drive Head Change Instructions

(Timing Belt to Direct Drive)



(Fig. 5)



(Fig. 6)



(Fig. 7)



(Fig. 8)

8. Loosen the ¼" X ½" hex head bolts in the frame splice brackets ( 4-6 bolts on each side) (Fig. 5)
9. Remove guard plates from the top and bottom of the reducer bracket and remove (4) M6 bolts attaching the reducer to the reducer bracket. (Fig. 6 & 7)
10. Remove the single 3/8" bolt retaining the reducer to the driveshaft and remove the reducer/ motor.
11. You are now able to remove the drive head as an assembly from the main frame of the conveyor by sliding it off the splice brackets.
12. Transfer the ¼" X ½" hex head bolts loosened in step 8 to the new direct drive head assembly and install new direct drive head assembly to the main conveyor.
13. Tighten the bolts into the splice brackets while holding the drive assembly into the frame to insure proper seating between the head and frame.
14. Install the motor / reducer combo onto the drive shaft with the square drive key and secure with 3/8" bolt against collar. Use of anti seize compound on the square drive key is recommended. (Fig. 8)

## EA Conveyor

### EA Conveyor Drive Head Change Instructions

(Timing Belt to Direct Drive)



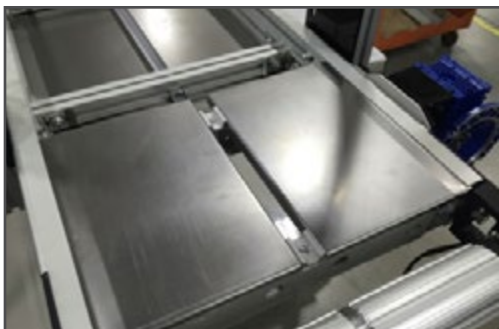
(Fig. 9)



(Fig. 10)



(Fig. 11)



(Fig. 12)

15. Install the reaction rod bracket to the bottom of the reducer with  $\frac{1}{4}$ " bolts and attach reaction rod to stabilize the motor / reducer combo. (Fig. 9)
16. Due to switching the motor / reducer mounting direction you may need to reverse the motor direction. This is accomplished by removing the electrical box cover and switching the 2 lead wires. (Use caution that there is no power present) (Fig 10) You may need to move the controls to accommodate the movement of the motor. (Fig. 11)
17. Install the reducer guard (Fig. 12)
18. Re-install the slide trays to the bottom side of the conveyor using the retainers and  $\frac{1}{4}$ "-20 flat head screws previously removed in step 6.
19. Complete the remaining assembly in reverse order. Use the operators manual to set belt tension and tracking beginning on page. 13.