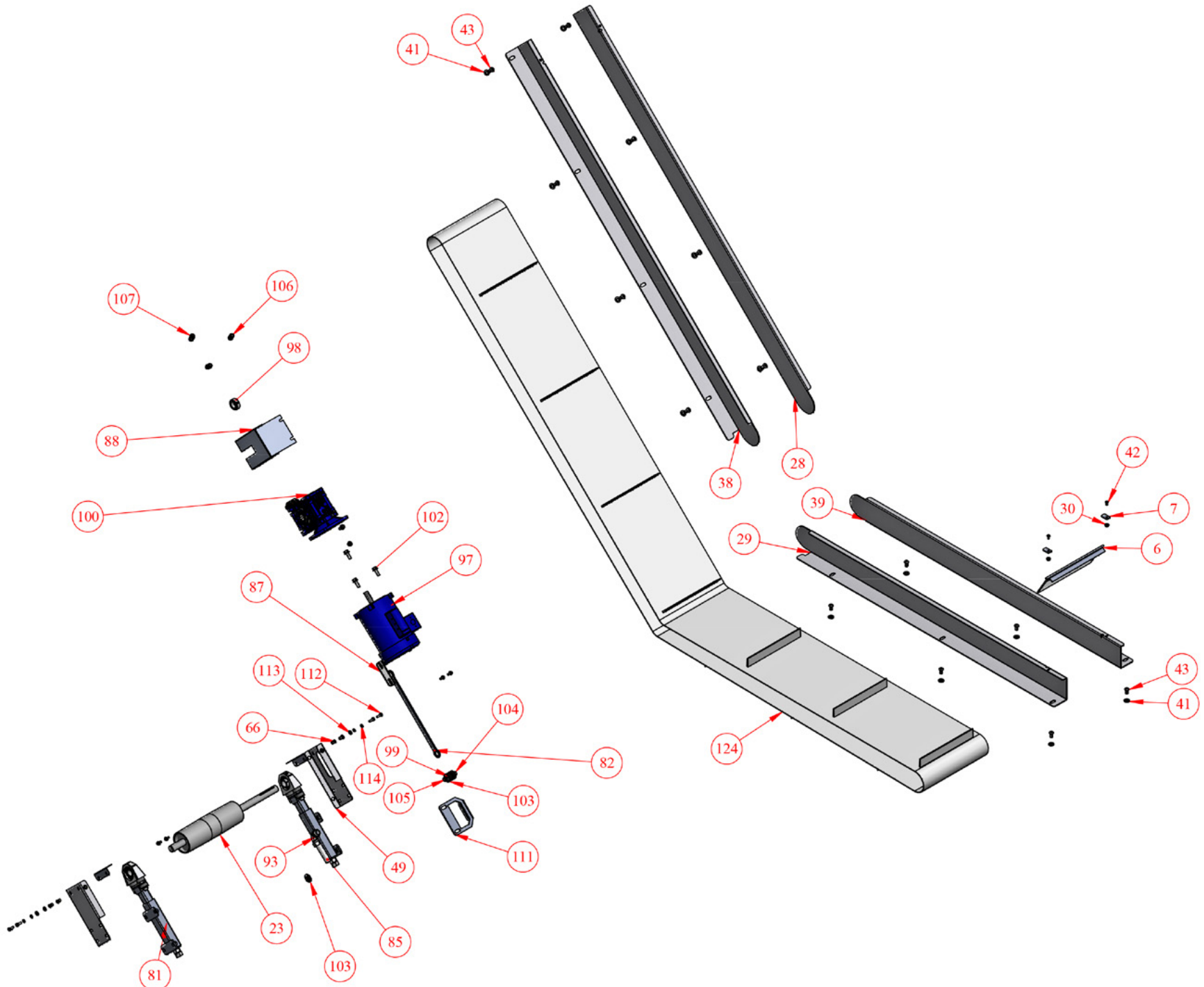
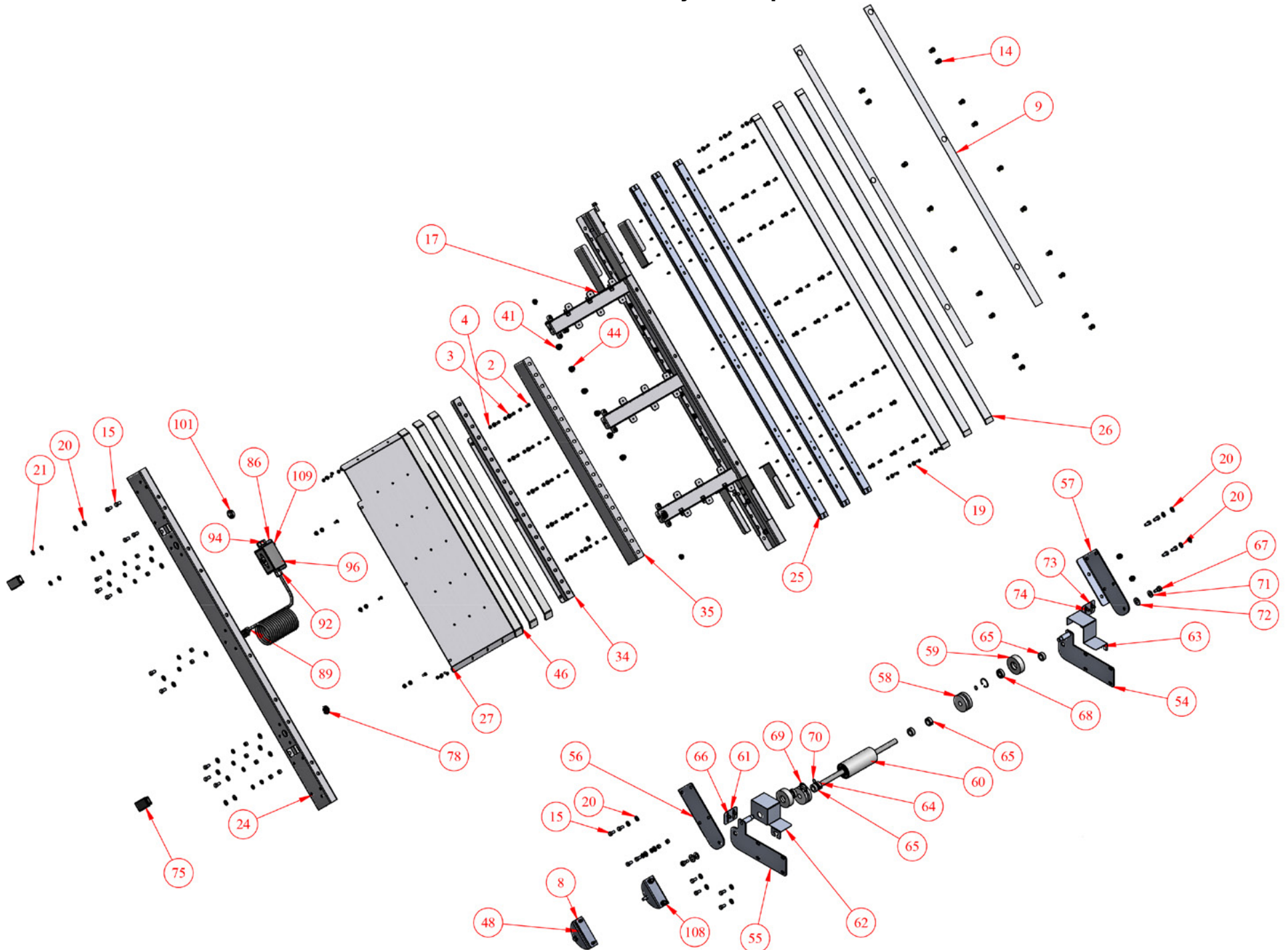


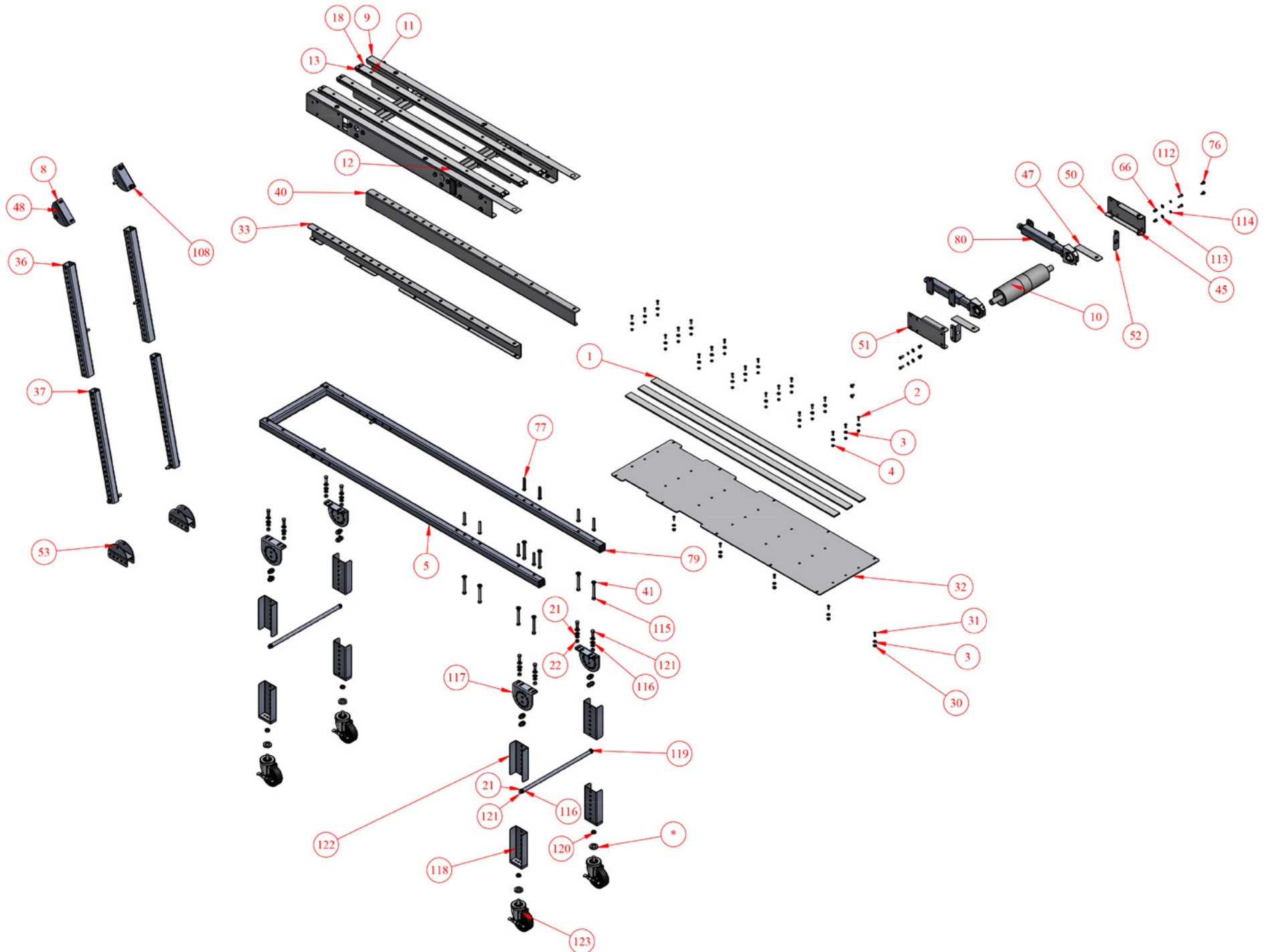
ACRK Clean Room Conveyor - Exploded View



ACRK Clean Room Conveyor - Exploded View



ACRK Clean Room Conveyor - Exploded View



ACRK Clean Room Conveyor - Exploded View

NO.	QTY.	PART NO.	DESCRIPTION
1	3	4M-29-34-L	UHMW WEAR STRIP
2	96	CP-282	SLOTTED FLAT HEAD SCREW .250-20 x .750
3	58	CP-654	FLAT WASHER .250 SAE
4	96	CP-600	1/4-20 PLATED ELASTIC LOCK NUT
5	1	4M-241-1-W-L-S	SST SUB-BASE WELD ASSY
6	1	2E-249-5-W	NEW STYLE LEXAN FLAPPER
7	2	2E-01-10	FLAPPER CLIP
8	1	2M-31-11-S	SST LEG SPACER
9	4	4M-31-26-L	SIDE RAIL SPACER
10	1	4M-224-2-W	WELD ASSY FOR STEEL TAIL
11	2	4M-44-41-L	AD FRAME SIDE
12	5	4M-41-21-W	FRAME CROSSBRACE
13	3	4M-45-39-L	SST SLIDE TRAY
14	36	CP-2867	HEX NUT INSERT 3/8-16 GRIP RANGE .150-.312 #AH-S- 4-616-312
15	72	CP-2155	HEX HEAD SCREW .375-16 x .750 SST
16	54	CP-2052	POP RIVET 3/16 RIVET, CTRSK HEAD,
17	12	4M-29-1-CR	SLIDE TRAY END SUPPORT
18	3	2L-31-8-L	UHMW SPACER
19	54	CP-1997	FLAT WASHER .250 SAE 80/20
20	130	CP-768	FLAT WASHER .375 SST
21	108	CP-186	LOCK WASHER .375 SPLIT RING SST
22	88	CP-179	HEX NUT .375-16 SST
23	1	4M-210-6-W	WELD ASSY FOR STEEL DRIVE
24	2	4M-44-41-L	AD FRAME SIDE
25	3	4M-45-39-L	SST SLIDE TRAY
26	3	2L-31-8-L	UHMW SPACER
27	1	4M-45-14-L-W-U	DROP BOTTOM SLIDE TRAY
28	1	4M-33-151-L	ALUM SIDE RAIL
29	1	4M-33-151-L	ALUM SIDE RAIL
30	18	CP-3297	SERRATED FLANGE NUT 0.25-20 BLACK OXIDE
31	16	CP-695	HEX SOCKET BUTTON HEAD SCREW .250-20 x .750

Part numbers listed in this document are for reference only. When buying replacement parts please provide your conveyor model & serial number to ensure the correct part.

ACRK Clean Room Conveyor - Exploded View

NO.	QTY.	PART NO.	DESCRIPTION
32	1	4M-45-12-L-W-U	ADK BOTTOM BELT TRAY
33	1	4M-44-12-L	RH BOTTOM BELT GUARD SIDE
34	1	4M-44-16-L	RH BOTTOM BELT GUARD SIDE
35	1	4M-44-15-L	LH BOTTOM BELT GUARD SIDE
36	2	4S-36-29-L	TELESPAR EXT
37	2	4S-36-28-L	TELESPAR LEG
38	1	4M-33-152-L	ALUM SIDE RAIL
39	1	4M-33-152-L	ALUM SIDE RAIL
40	1	4M-44-11-L	LH BOTTOM BELT GUARD SIDE
41	44	CP-3342	FLAT WASHER .375
42	2	CP-2419	HEX SOCKET BUTTON HEAD SCREW .250-20 x .500
43	40	CP-3293	HEX SOCKET BUTTON HEAD SCREW .375-16 x .750
44	32	CP-3299	3/8-16 SERRATED FLANGE
45	6	CP-2856	HEX NUT INSERT 3/8-16 GRIP RANGE .027-.150 (AKPT6P616)
46	3	4M-29-35-L	DELTRIN WEAR STRIP
47	2	4M-31-20	INFEED 6" TAIL SPACER PLATE
48	2	4M-14-23-S	SST CONV. TO SUB-BASE LEG MNT.
49	1	4M-08-2-(L/R)	PULLEY GUARD
50	2	4M-08-1-(L/R)	PULLEY GUARD
51	1	4M-08-1-(L/R)	PULLEY GUARD
52	4	2M-67-1-S	SST BEARING COVER
53	2	2M-229-5-S	DDK ADJUSTING SUPPORT
54	1	DDK-227-2-1-S	SST INFEED TRANS. MOUNTING
55	1	DDK-227-2-2-S	SST INFEED TRANS. MOUNTING
56	1	DDK-27-3-(L/R)-S	SST INCLINE TRANSITION BRKT
57	1	DDK-27-3-(L/R)-S	SST INCLINE TRANSITION BRKT
58	2	2L-15-1	ATLK / STLK RETURN
59	2	2M-15-1	TRANSITION PINCH IDLER WHEEL
60	1	2M-40-2-W	RETURN IDLER
61	2	4M-08-6-S	ADJ. TRANSITION PINCH IDLER
62	1	4M-208-1-S	SST LH TRANSITION PINCH IDLER

Part numbers listed in this document are for reference only. When buying replacement parts please provide your conveyor model & serial number to ensure the correct part.

ACRK Clean Room Conveyor - Exploded View

NO.	QTY.	PART NO.	DESCRIPTION
63	1	4M-208-2-S	SST RH TRANSITION PINCH IDLER
64	1	4M-21-3-W	RETURN IDLER ROLLER SHAFT
65	6	CP-1210	LOCKING COLLAR .750IDx1.250ODx.563TH
66	12	CP-2132	1/4 - 20 AVIBANK NUTSERT
67	2	CP-3051	SHOULDER SCREW .500 x .375
68	2	CP-7037	LSE-11 ROLLER BEARING
69	2	CP-7310	SNAP RING 35MM DIA (SEEGER) ATS-25
70	2	CP-7035	SNAP RING, 15mm EXTERNAL RING
71	2	CP-658	FLAT WASHER .500 SAE
72	2	CP-894	FLAT WASHER .500 SST
73	4	CP-3340	FLAT WASHER .250
74	4	CP-690	THUMB SCREW 1/4 - 20 X 3/4" PLATED
75	8	CP-1581	1 1/2 x 3" BLACK PLASTIC CAP
76	10	CP-3067	HEX SERRATED FLANGE SCREW 0.250-20x0.500" ZINC PLATED
77	8	CP-3296	HEX SOCKET BUTTON HEAD SCREW .375-16 x 2.500
78	6	EL-395	HEYCO DOME PLUG #2733
79	4	CP-2321	PLASTIC CAP 1.500x1.500 SQUARE
80	2	2M-232-3-S	TAKE-UP ASSY
81	2	2M-232-4-S	TAKE-UP ASSY
82	1	2M-38-1-S	SST REACTION ROD
83	1	4E-269-1	BLACK WIRE ASSY FOR STD DRIVE PAK
84	1	4E-269-2	GREEN WIRE ASSY FOR STD DRIVE PAK
85	1	4E-62-1	CONDUIT FOR STD DRV PAK
86	1	2M-14-3-S	FG-5 SWITCH MOUNTING BRACKET
87	1	2M-14-28-1-S	SST REACTION ROD BRACKET
88	1	2M-08-12-S	SST 050 MOTOVARIO GEARBOX OUTPUT SHAFT GUARD
89	1	2E-263-1	15' POWER CORD
90	1	EL-533	SQ.D. HEATER A9.85
91	3	EL-455	WIRE NUT "Y" TYPE
92	1	EL-358	APPLETON CORD GRIP CONNECTOR #CG-3150
93	1	EL-353	90 DEG .500 INCH CONDUIT FITTING (REF RACO)

Part numbers listed in this document are for reference only. When buying replacement parts please provide your conveyor model & serial number to ensure the correct part.

ACRK Clean Room Conveyor - Exploded View

NO.	QTY.	PART NO.	DESCRIPTION
94	1	EL-354	.500 INCH STRAIGHT CONNECTOR
95	3	EL-301	RING TERMINAL 14-16 AWG, #8 (STUD)
96	1	EL-168	SWITCH - FG5 SQ. D.
97	1	EL-116B	LINCOLN LM24598 1/3 HP 115/230/60/1
98	1	CP-1201	LOCKING COLLAR 1.000IDx1.625ODx.625TH
99	2	CP-3178	UNIVERSAL MOUNT (NARROW) #60166-4
100	1	CP-3290	MOTOVARIO GEAR REDUCER #NMRV050-40-56C
101	2	EL-394	HEYCO SNAP BUSHING #2182
102	4	CP-2939	HEX SERRATED FLANGE SCREW 0.375-16x1.000" ZINC PLATED
103	5	CP-671	FLAT WASHER .407IDx1.250ODx.125TH
104	2	CP-3049	HEX SERRATED FLANGE SCREW 0.375-16x2.000" ZINC PLATED
105	6	CP-2869	SERRATED FLANGE NUT 0.375-16 ZINC PLATED
106	4	CP-2941	HEX SERRATED FLANGE SCREW 0.313-18x0.750" ZINC PLATED
107	4	CP-3786	5/16 FLANGE HEX NUT
108	5	CP-2890	HEX SERRATED FLANGE SCREW 0.375-16x0.750" ZINC PLATED
109	2	CP-3068	HEX FLANGE NUT 0.25-20
110	1	CP-1003	1/4"SQ x 1.500 KEY
111	1	2M-14-29-3-S	SST REACTION ROD BRACKET
112	8	CP-188	HEX HEAD SCREW .250-20 x .750 SST
113	8	CP-182	FLAT WASHER .250 SAE SST
114	8	CP-185	LOCK WASHER .250 SPLIT RING SST
115	16	CP-346	HEX HEAD SCREW .375-24 x 3.000 SST
116	68	CP-183	FLAT WASHER .375 SST SAE
117	4	2M-14-16-S	SST LEG MOUNTING BRACKET
118	4	4S-236-X	LEG WELD ASSY
119	2	4S-41-37-L	5/8" DIA. SST CROSS BRACE
120	4	CP-284	HEX JAM NUT .500-13 SST
121	20	CP-175	HEX HEAD SCREW .375-16 x 1.000 SST
122	4	4S-36-X	LEG EXTENSION
123	4	CP-1239	SWIVEL CASTER, 4"X1 3/8"
124	1	BELT	BELT FOR ACRK

Part numbers listed in this document are for reference only. When buying replacement parts please provide your conveyor model & serial number to ensure the correct part.