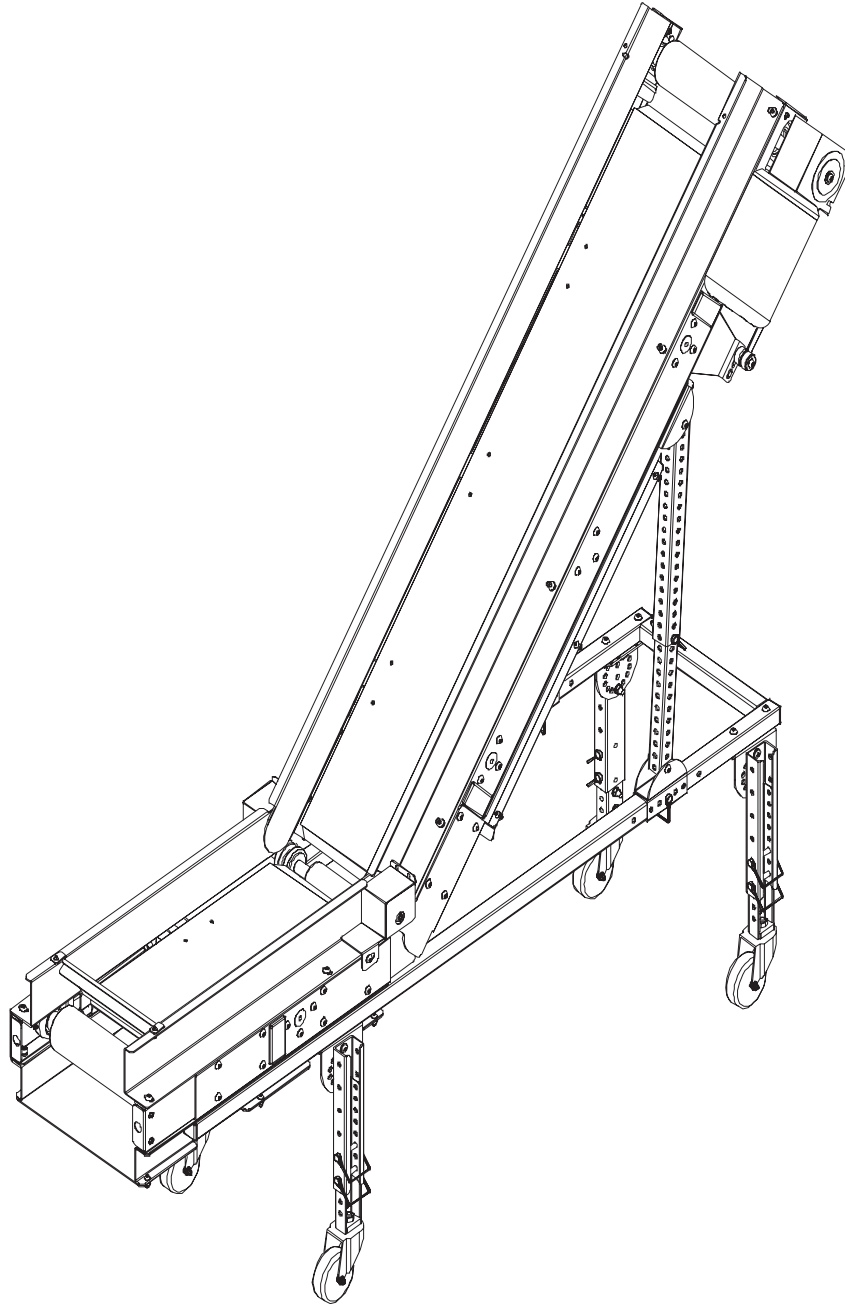


SECTION VIII. PARTS LISTS AND 3-D DRAWINGS

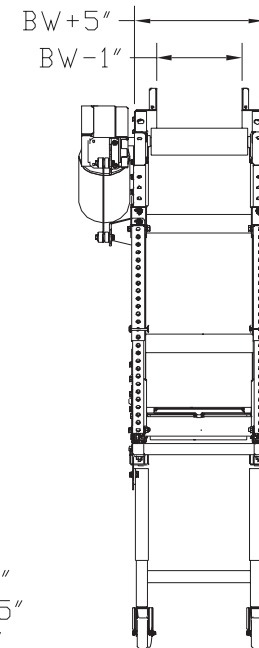
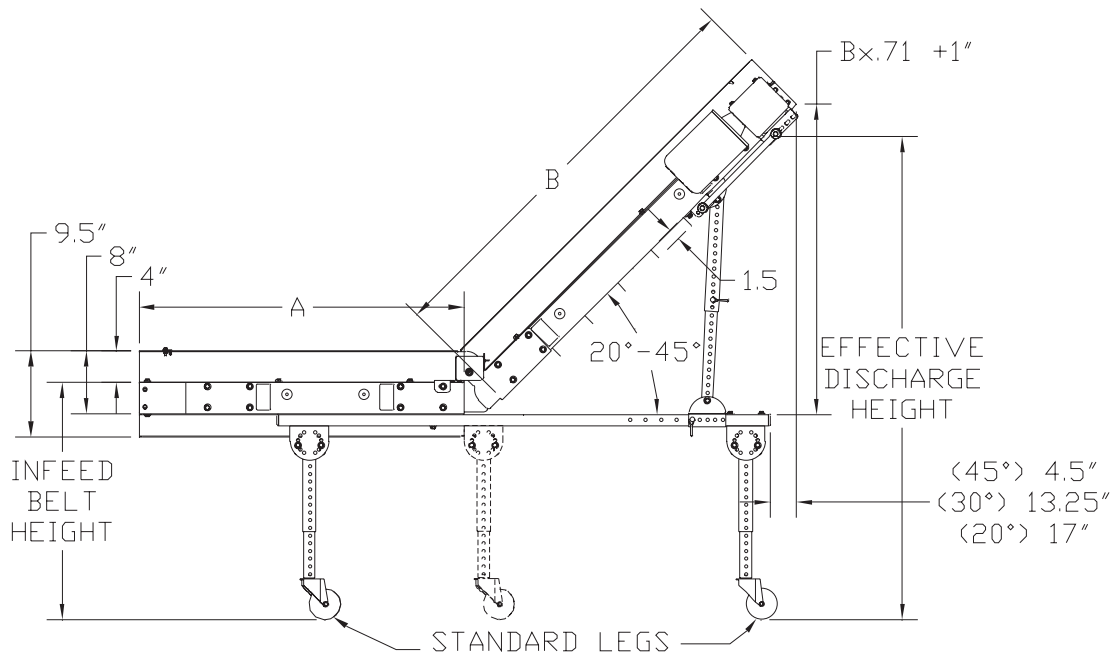
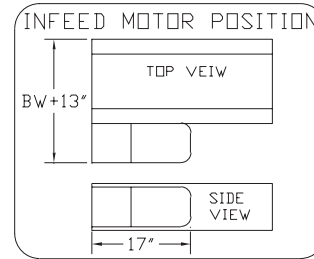
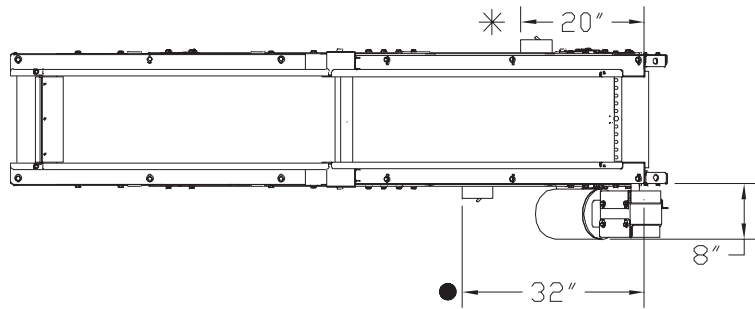
ADK CONVEYOR - ASSEMBLED VIEW

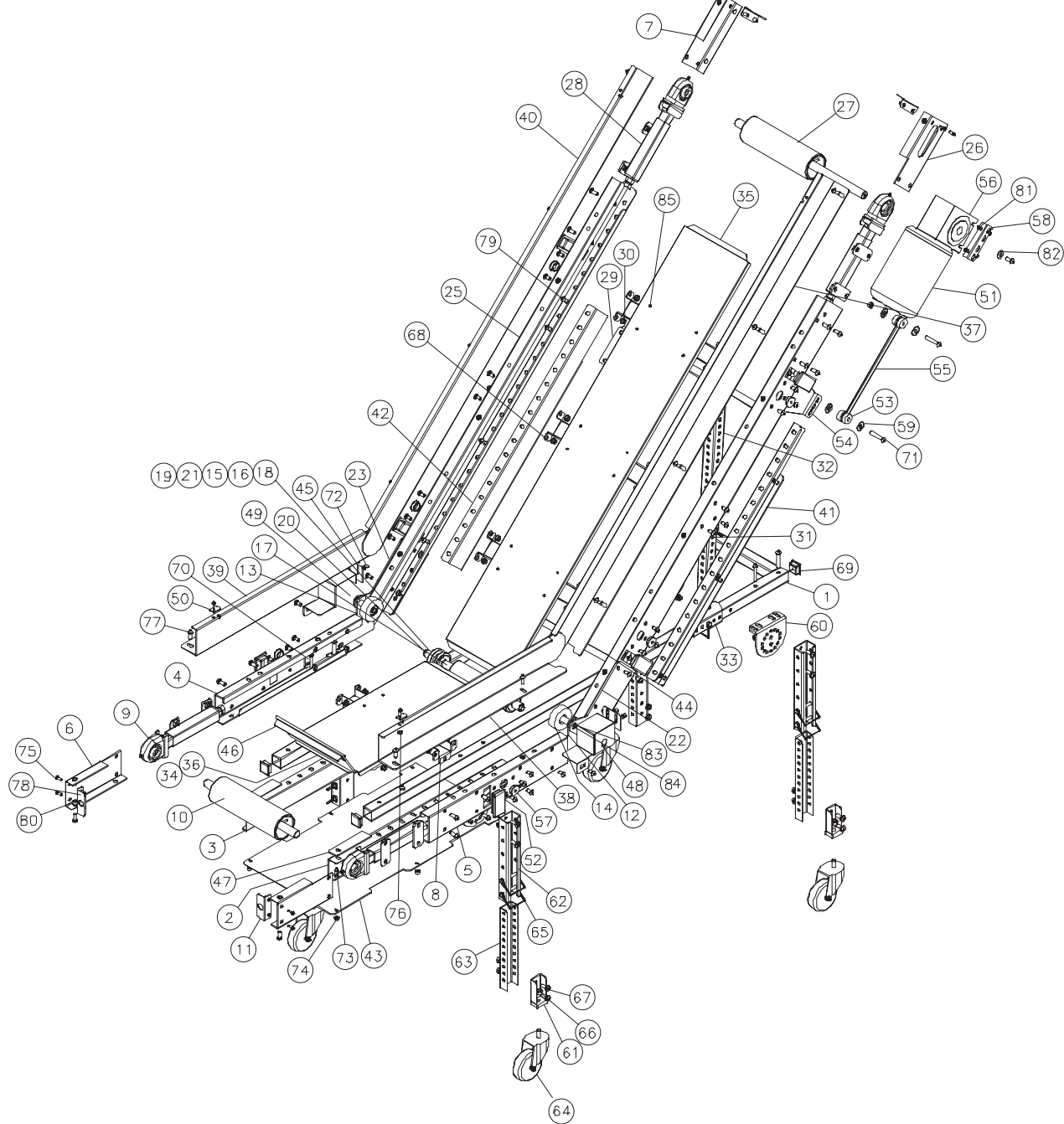


SECTION VIII. PARTS LISTS AND 3-D DRAWINGS

ADK CONVEYOR - CATALOG VIEW

NOTE: A & B DIMENSION ARE IN 1' INCREMENTS +6"
 DRIVE LOCATION FOR 24' & 30' MODELS IS ON INFEED END
 DRIVE LOCATION FOR 9', 12', & 18' MODELS IS ON DISCHARGE
 11" MIN. INFEED BELT HEIGHT WITH STANDARD LEGS & CASTORS
 ● STANDARD STARTER POSITION (SPECIFY IF OTHER LOCATION)
 * STARTER POSITION FOR 8' OR SHORTER CONVEYORS
 BW=BELT WIDTH



SECTION VIII. PARTS LISTS AND 3-D DRAWINGS**ADK CONVEYOR - EXPLODED VIEW**

ADK CONVEYOR PARTS LIST

| ITEM | QTY | PART DESCRIPTION | EMI P/N |
|------|-----|------------------------------------|------------|
| 1 | 1 | SUB-BASE | See BOM |
| 2 | 1 | BELT GUARD | See BOM |
| 3 | 1 | BELT GUARD | See BOM |
| 4 | 1 | FRAME | See BOM |
| 5 | 1 | FRAME | See BOM |
| 6 | 1 | PULLEY GUARD | 4M-08-1-L |
| 7 | 2 | PULLEY GUARD | 4M-08-1-R |
| 8 | 4 | CROSS BRACE | 4M-41-1-W |
| 9 | 2 | TAKE-UP BEARING ASS'Y | 2M-232-1 |
| 10 | 1 | TAIL PULLEY | 4M-224-1-W |
| 11 | 4 | BEARING COVER | 4M-67-1 |
| 12 | 1 | INF LH TRANSFER CONNECTING PLATE | 4M-227-1 |
| 13 | 1 | INF RH TRANSFER CONNECTING PLATE | 4M-227-2 |
| 14 | 2 | IDLER WHEEL | 2M-15-1 |
| 15 | 2 | ROLLER BEARING | CP-7037 |
| 16 | 1 | RETURN IDLER ROLLER SHAFT | 4M-21-3-W |
| 17 | 1 | ROLLER | 2M-40-2-W |
| 18 | 2 | IDLER ROLLER SPACER | See BOM |
| 19 | 2 | IDLER ROLLER SPACER | See BOM |
| 20 | 2 | IDLER FLANGE | 4M-15-1 |
| 21 | 4 | 3/4" WIDE FLAT WASHER | CP-667 |
| 22 | 1 | DISCH LH TRANSFER CONNECTING PLATE | 4M-27-6 |
| 23 | 1 | DISCH RH TRANSFER CONNECTING PLATE | 4M-27-7 |
| 24 | 20 | 3/8" FLAT WASHER | CP-3342 |
| 25 | 2 | FRAME | See BOM |
| 26 | 1 | PULLEY GUARD | 4M-08-2-L |
| 27 | 1 | DRIVE PULLEY | 4M-210-1-W |
| 28 | 2 | TAKE-UP BEARING ASS'Y | 2M-232-4 |
| 29 | 2 | LEG SPACER | 2M-31-11 |
| 30 | 2 | LEG MOUNTING BRACKET | 4M-14-23 |
| 31 | 2 | LEG | See BOM |
| 32 | 2 | LEG EXTENSION | See BOM |
| 33 | 2 | SLIDE | 4M-229-5 |
| 34 | 4 | SLIDE TRAY SUPPORT | See BOM |
| 35 | 1 | SLIDE TRAY | See BOM |
| 36 | 1 | SLIDE TRAY | See BOM |
| 37 | 1 | SIDE RAIL | See BOM |
| 38 | 1 | SIDE RAIL | See BOM |
| 39 | 1 | SIDE RAIL | See BOM |
| 40 | 1 | SIDE RAIL | See BOM |
| 41 | 1 | LH BOTTOM TRAY SIDE | See BOM |
| 42 | 1 | RH BOTTOM TRAY SIDE | See BOM |
| 43 | 1 | BOTTOM SLIDE TRAY | See BOM |

| ITEM | QTY | PART DESCRIPTION | EMI P/N |
|------|-----|---|-----------|
| 44 | 1 | BOTTOM TRAY | See BOM |
| 45 | 2 | IDLER GUARD | 4M-08-6 |
| 46 | 1 | FLAPPER | See BOM |
| 47 | 2 | TAIL SPACER | 4M-31-20 |
| 48 | 1 | IDLER GUARD ASS'Y | 4M-208-1 |
| 49 | 1 | IDLER GUARD ASS'Y | 4M-208-2 |
| 50 | 2 | FLAPPER CLIP | 2E-01-10 |
| 51 | 1 | MOTOR | See BOM |
| 52 | 6 | PLUG | CP-1581 |
| 53 | 2 | MOUNT | CP-3178 |
| 54 | 1 | REACTION ROD BRACKET | 2M-14-29 |
| 55 | 1 | REACTION ROD | 2M-38-1 |
| 56 | 1 | GEARBOX | See BOM |
| 57 | 6 | PLUG | EL-395 |
| 58 | 1 | REACTION ROD BRACKET | 2M-14-28 |
| 59 | 4 | 3/8" FLAT FENDER WASHER | CP-671-B |
| 60 | 4 | LEG MOUNTING BRACKET | 2M-14-16 |
| 61 | 4 | LEG ADAPTER | 4M-236-15 |
| 62 | 4 | LEG EXTENSION | See BOM |
| 63 | 4 | LEG | See BOM |
| 64 | 4 | CASTOR | CP-1237 |
| 65 | 12 | CLIP PIN | CP-3301 |
| 66 | 4 | 1/2"-13 HEX NUT | CP-508-B |
| 67 | 18 | 3/8"-16x1" HEX SOCKET BUTTON HEAD CAP SCREW | CP-3325 |
| 68 | 86 | 3/8"-16 HEX NUT | CP-3299 |
| 69 | 4 | PLUG | CP-2321 |
| 70 | 4 | 3/8"-16x2-1/2" HEX SOCKET BUTTON HEAD CAP SCREW | CP-3296 |
| 71 | 12 | 3/8"-16x2-1/4" HEX SOCKET BUTTON HEAD CAP SCREW | CP-3353 |
| 72 | 4 | 1/4"-20x1/2" THUMB SCREW | CP-451-B |
| 73 | 12 | 1/4"-20x3/4" HEX SOCKET BUTTON HEAD CAP SCREW | CP-3291 |
| 74 | 12 | 1/4"-20 HEX NUT | CP-3297 |
| 75 | 12 | 1/4"-20x3/4" HEX SOCKET BUTTON HEAD CAP SCREW | CP-3291 |
| 76 | 2 | 1/4"-20 HEX NUT | CP-3297 |
| 77 | 31 | 3/8"-16x1" HEX SOCKET BUTTON HEAD CAP SCREW | CP-3325 |
| 78 | 8 | 1/4"-20 NUTSERT | CP-2132 |
| 79 | 52 | 3/8"-16x3/4" HEX SOCKET BUTTON HEAD CAP SCREW | CP-2890 |
| 80 | 14 | 3/8"-16 NUTSERT | CP-2856 |
| 81 | 2 | 1/4"-20 HEX NUT | CP-3297 |
| 82 | 1 | 3/8" FENDER WASHER | CP-671-B |
| 83 | 2 | 1/2" WASHER | CP-658 |
| 84 | 2 | 1/2"x 1" HEX SOCKET HEAD SHOULDER SCREW | CP-3051 |
| 85 | 24 | 5/32"x7/16" COUNTERSUNK HEAD RIVET | CP-2052 |
| 86 | 2 | SNAP RING | CP-7310 |
| 87 | 2 | SNAP RING | CP-7035 |

Part numbers listed in this document are for reference only. When buying replacement parts please provide your conveyor model & serial number to ensure the correct part.