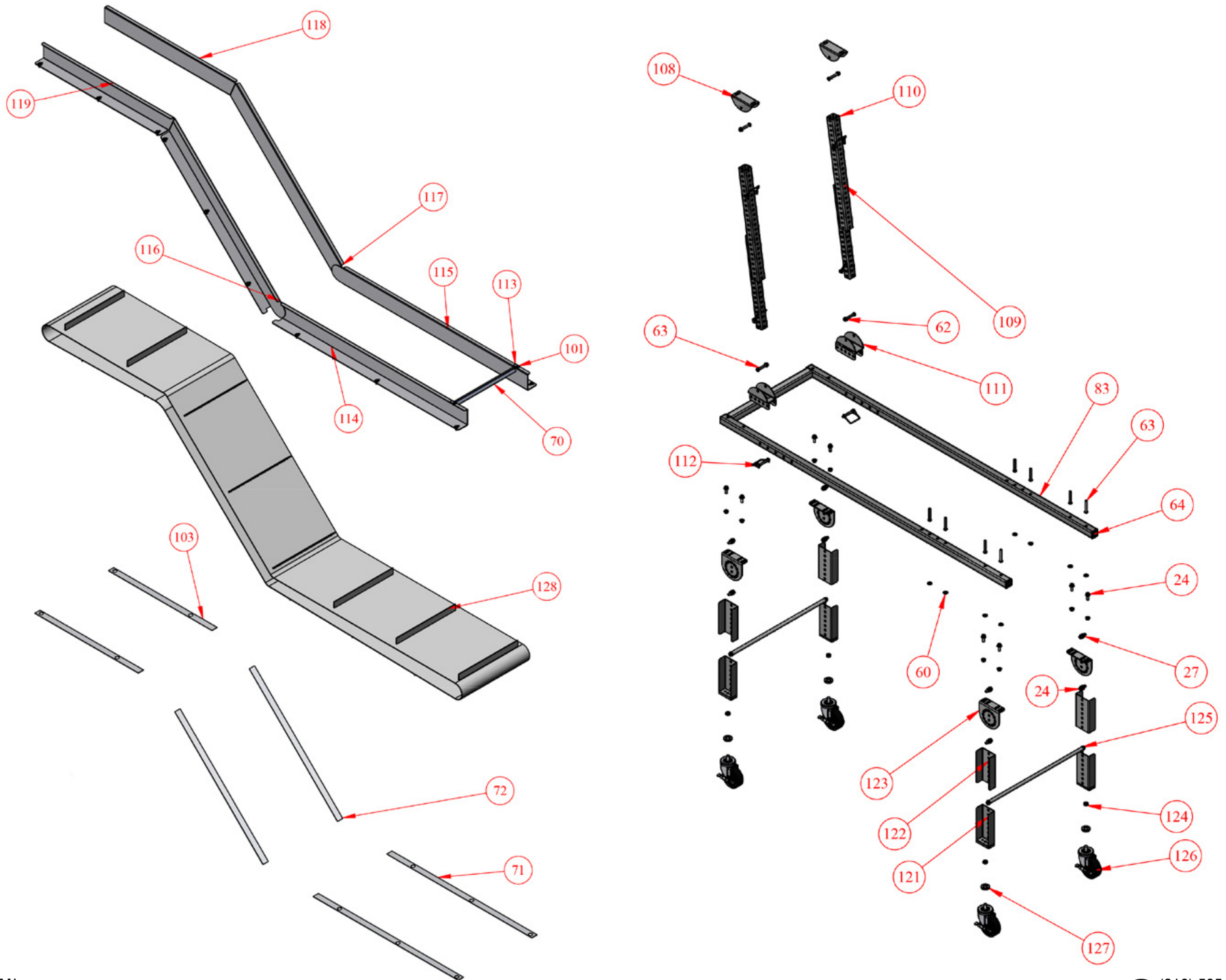
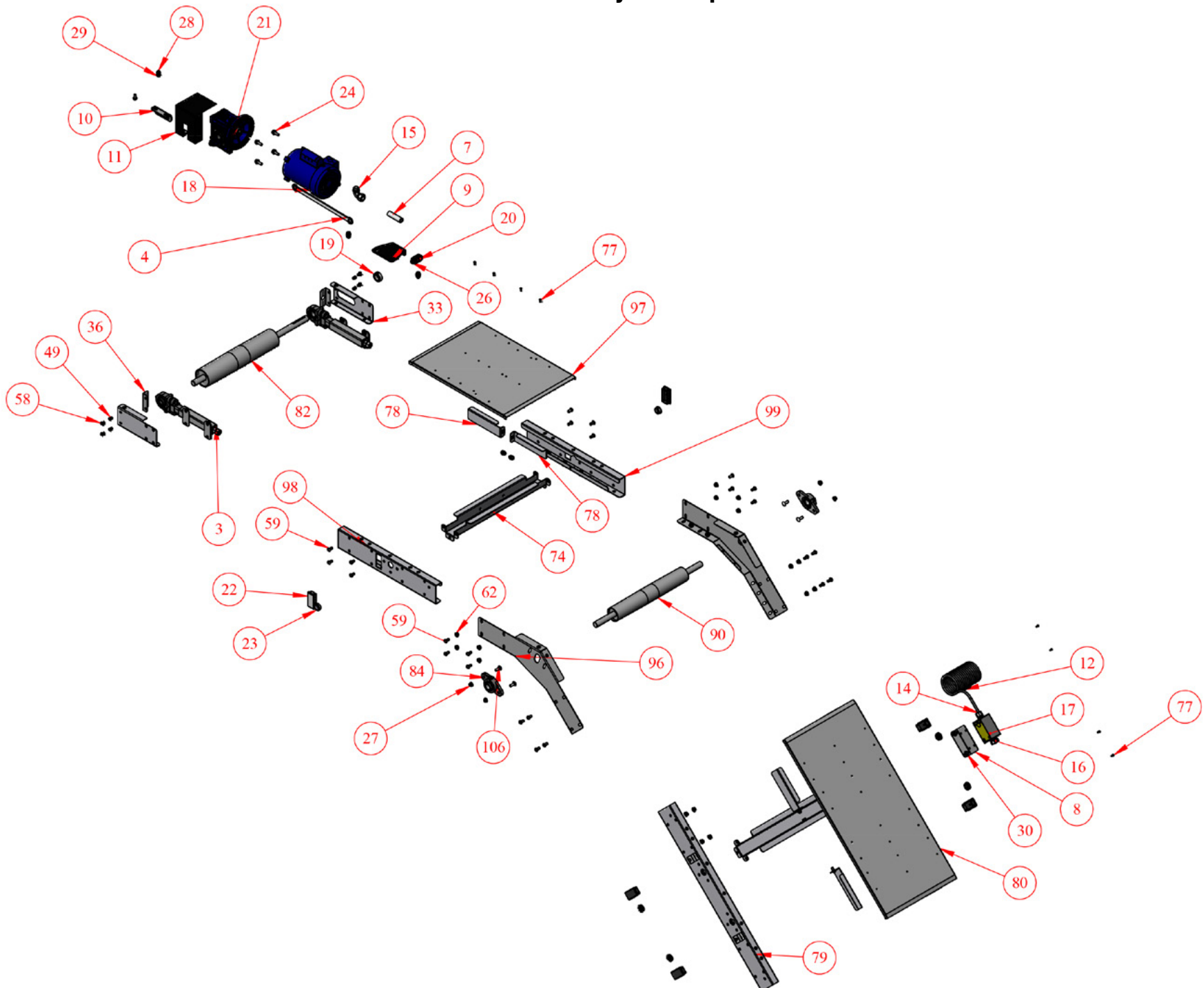


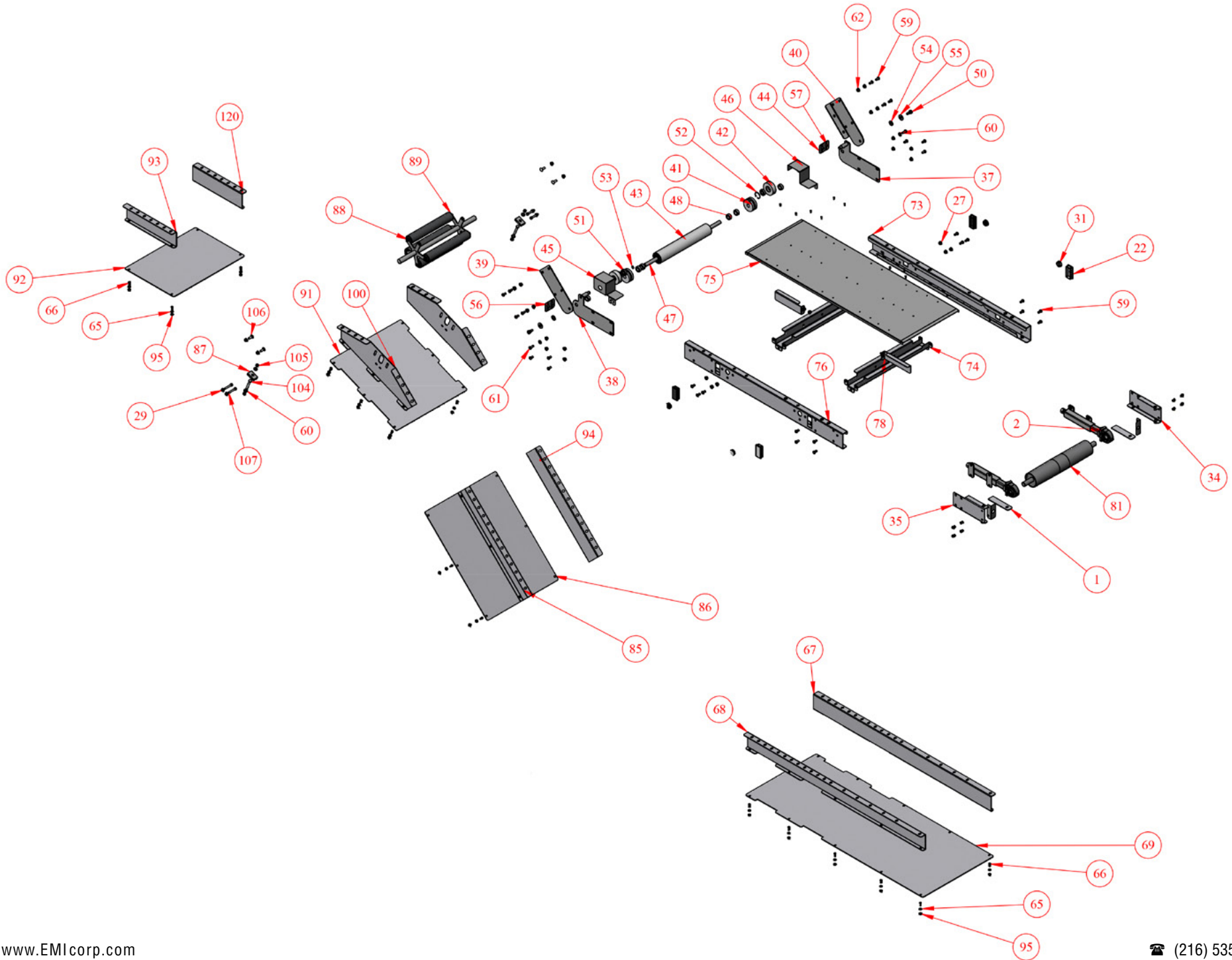
ADZ Merit Line Conveyor - Exploded View



ADZ Merit Line Conveyor - Exploded View



ADZ Merit Line Conveyor - Exploded View



ADZ Merit Line Conveyor - Exploded View

NO.	QTY.	PART NO.	DESCRIPTION
1	2	4M-31-20	INFEED 6" TAIL SPACER PLATE
2	2	2M-232-3	TAKE-UP
3	2	2M-232-4	TAKE-UP
4	1	2M-38-1	REACTION ROD
5	1	4E-269-1	BLACK WIRE ASSY FOR STD DRIVE PAK
6	1	4E-269-2	GREEN WIRE ASSY FOR STD DRIVE PAK
7	1	4E-62-1	CONDUIT FOR STD DRV PAK
8	1	2M-14-3	FG-5 SWITCH MOUNTING BRACKET
9	1	2M-14-29	REACTION ROD BRACKET
10	1	2M-14-28-1	REACTION ROD BRACKET
11	1	2M-08-12	050 MOTOVARIO GEARBOX
12	1	2E-263-1	15' POWER CORD
13	2	EL-455	WIRE NUT "Y" TYPE
14	1	EL-358	APPLETON CORD GRIP CONNECTOR #CG-3150
15	1	EL-353	90 DEG .500 INCH CONDUIT FITTING (REF RACO)
16	1	EL-354	.500 INCH STRAIGHT CONNECTOR
17	1	EL-168	SWITCH - FG5 SQ. D.
18	1	EL-116B	LINCOLN LM24598 1/3 HP 115/230/60/1
19	1	CP-1201	LOCKING COLLAR 1.000IDx1.625ODx.625TH
20	2	CP-3178	UNIVERSAL MOUNT (NARROW) #60166-4
21	1	CP-3289	MOTOVARIO GEAR REDUCER #NMRV050-40-56C
22	10	CP-1581	1 1/2 x 3" BLACK PLASTIC CAP
23	2	EL-394	HEYCO SNAP BUSHING #2182
24	24	CP-2939	HEX SERRATED FLANGE SCREW 0.375-16x1.000" ZINC PLATED
25	5	CP-671	FLAT WASHER .407IDx1.250ODx.125TH
26	2	CP-3049	HEX SERRATED FLANGE SCREW 0.375-16x2.000" ZINC PLATED
27	72	CP-2869	SERRATED FLANGE NUT 0.375-16 ZINC PLATED
28	4	CP-2941	HEX SERRATED FLANGE SCREW 0.313-18x0.750" ZINC PLATED
29	8	CP-3786	5/16 FLANGE HEX NUT
30	5	CP-2890	HEX SERRATED FLANGE SCREW 0.375-16x0.750" ZINC PLATED
31	8	EL-395	HEYCO DOME PLUG #2733

Part numbers listed in this document are for reference only. When buying replacement parts please provide your conveyor model & serial number to ensure the correct part.

ADZ Merit Line Conveyor - Exploded View

NO.	QTY.	PART NO.	DESCRIPTION
32	1	CP-1003	1/4"SQ x 1.500 KEY
33	1	4M-08-2-L	PULLEY GUARD
34	2	4M-08-1-R	PULLEY GUARD
35	1	4M-08-1-L	PULLEY GUARD
36	4	2M-67-1	BEARING COVER
37	1	DDK-227-2-1	INFEED TRANSITION MOUNTING
38	1	DDK-227-2-2	INFEED TRANSITION MOUNTING
39	1	DDK-27-3-L	INCLINE TRANSITION BRKT
40	1	DDK-27-3-R	INCLINE TRANSITION BRKT
41	2	2L-15-1	ATLK / STLK RETURN
42	2	2M-15-1	TRANSITION PINCH IDLER WHEEL
43	1	2M-40-2-30	RETURN IDLER
44	2	4M-08-6	ADJ. TRANSITION PINCH IDLER
45	1	4M-208-1	LH TRANSITION PINCH IDLER GUARD
46	1	4M-208-2	RH TRANSITION PINCH IDLER GUARD
47	1	4M-21-3-18	RETURN IDLER ROLLER SHAFT
48	6	CP-1210	LOCKING COLLAR .750IDx1.250ODx.563TH
49	12	CP-2132	1/4 - 20 AVIBANK NUTSERT
50	2	CP-3051	SHOULDER SCREW .500 x .375
51	2	CP-7037	LSE-11 ROLLER BEARING
52	2	CP-7310	SNAP RING 35MM DIA (SEEGER) ATS-25
53	2	CP-7035	SNAP RING, 15mm EXTERNAL RING
54	2	CP-658	FLAT WASHER .500 SAE
55	2	CP-894	FLAT WASHER .500 SST
56	4	CP-3340	FLAT WASHER .250
57	4	CP-690	THUMB SCREW 1/4 - 20 X 3/4" PLATED
58	8	CP-3067	HEX SERRATED FLANGE SCREW 0.250-20x0.500" ZINC PLATED
59	138	CP-3293	HEX SOCKET BUTTON HEAD SCREW .375-16 x .750
60	58	CP-3342	FLAT WASHER .375
61	2	CP-3325	HEX SOCKET BUTTON HEAD SCREW .375-16 x 1.000
62	74	CP-3299	3/8-16 SERRATED FLANGE

Part numbers listed in this document are for reference only. When buying replacement parts please provide your conveyor model & serial number to ensure the correct part.

ADZ Merit Line Conveyor - Exploded View

NO.	QTY.	PART NO.	DESCRIPTION
63	12	CP-3296	HEX SOCKET BUTTON HEAD SCREW .375-16 x 2.500
64	4	CP-2321	PLASTIC CAP 1.500x1.500 SQUARE
65	24	CP-654	FLAT WASHER .250 SAE
66	24	CP-695	HEX SOCKET BUTTON HEAD SCREW .250-20 x .750
67	1	4M-44-13-45	LH BOTTOM BELT GUARD SIDE
68	1	4M-44-14-45	RH BOTTOM BELT GUARD SIDE
69	1	4M-45-12-45-18	BOTTOM BELT TRAY
70	1	2E-249-5-18	NEW STYLE LEXAN FLAPPER
71	2	4M-31-26-35	SIDE RAIL SPACER
72	2	4M-31-27-3	1/16" x 1 1/2" SIDE RAIL SPACER
73	2	4M-44-4	AD FRAME SIDE
74	5	4M-41-1-18	FRAME CROSSBRACE
75	1	4M-45-4-18-DV	4' x 18" DV SLIDE TRAY
76	42	CP-2867	HEX NUT INSERT 3/8-16 GRIP RANGE .150-.312 #AH-S- 4-616-312
77	46	CP-2052	POP RIVET 3/16 RIVET, CTRSK HEAD,
78	12	4M-29-1	SLIDE TRAY END SUPPORT
79	2	4M-44-3	AD FRAME SIDE
80	1	4M-45-3-18-DV	3' x 18" DV SLIDE TRAY
81	1	4M-224-2-18	WELD ASSY FOR STEEL TAIL
82	1	4M-210-6-18	WELD ASSY FOR STEEL DRIVE
83	1	4M-241-1-18-55	SUB-BASE WELD ASSY
84	4	CP-834	2 BOLT FLANGE BEARING
85	1	3M-44-66-2700-2	DROP BOTTOM SIDE GUARDS
86	1	3M-45-72-18-2700	BOTTOM SLIDE TRAY FOR ADZ
87	2	3E-40-88-BI-1	SUPPORT
88	1	3M-240-15-2-18	RETURN IDLER ROLLER ASS'Y
89	5	CP-2343-G	R1916-13-A10-V03 GALVANIZE ROLLER NUMBER
90	1	3E-240-123-18	TOP IDLER ROLLER
91	1	3M-44-67-1-18	BOTTOM BELT TRAY FOR A ACN N.O.
92	1	3M-45-72-18-1500	BOTTOM SLIDE TRAY FOR ADZ
93	1	3M-44-66-1500-1	DROP BOTTOM SIDE GUARDS
94	1	3M-44-66-2700-1	DROP BOTTOM SIDE GUARDS
95	26	CP-3297	SERRATED FLANGE NUT 0.25-20 BLACK OXIDE

Part numbers listed in this document are for reference only. When buying replacement parts please provide your conveyor model & serial number to ensure the correct part.

ADZ Merit Line Conveyor - Exploded View

NO.	QTY.	PART NO.	DESCRIPTION
96	2	ACN-244-4	45 DEG TRANSITION SIDE
97	1	4M-45-2-18-DV	2' x 18" DV SLIDE TRAY
98	1	4M-44-2-2	ADK FRAME SIDE
99	1	4M-44-2-1	ADK FRAME SIDE
100	2	3M-44-67-T	TRANSITION SIDE FOR A ADC N.O.
101	2	CP-2419	HEX SOCKET BUTTON HEAD SCREW .250-20 x .500
102	8	CP-2856	HEX NUT INSERT 3/8-16 GRIP RANGE .027-.150 (AKPT6P616)
103	2	4M-31-26-25	SIDE RAIL SPACER
104	2	CP-131	HEX HEAD SCREW .375-24 x 2.500
105	4	CP-513	HEX NUT .375-24
106	8	CP-465	CARRIAGE BOLT .375-16 x 1.000
107	4	CP-102	HEX HEAD SCREW .313-18 x 2.000
108	2	4M-14-23	CONV. TO SUB-BASE LEG MNT.
109	2	4M-36-14-55	TELESPAR LEG
110	2	4M-36-15-65	TELESPAR EXT
111	2	2L-229-6	CONV. TO SUB-BASE LEG MNT.
112	6	CP-2889	SAFETY SNAP PIN McMASTER CARR #98416A018
113	2	2E-01-10	FLAPPER CLIP
114	1	4M-33-151-45	ALUM SIDE RAIL
115	1	4M-33-152-45	ALUM SIDE RAIL
116	1	3E-33-3213-35-1	4" ALUM INCLINE SIDE RAIL
117	1	3E-33-3213-35-2	4" ALUM INCLINE SIDE RAIL
118	1	3E-33-3212-3-2	4" TOP SHELF RAIL FOR NOSEOVER
119	1	3E-33-3212-3-1	4" TOP SHELF RAIL FOR NOSEOVER
120	1	3M-44-66-1500-2	DROP BOTTOM SIDE GUARDS
121	4	2E-236-13	7" LEG WELD ASSY
122	4	2E-36-53	7" LEG EXTENSION
123	4	2M-14-16	LEG MOUNTING BRACKET
124	4	CP-508	HEX JAM NUT .500-13
125	2	3E-41-1062-2350	CROSS BRACE
126	4	CP-1239	SWIVEL CASTER, 4"X1 3/8"
127	4	4E-31-28	SPACER FOR K-3, K-4 CASTORS
128	1	BELT	CLEATED BELT FOR ADZ

Part numbers listed in this document are for reference only. When buying replacement parts please provide your conveyor model & serial number to ensure the correct part.