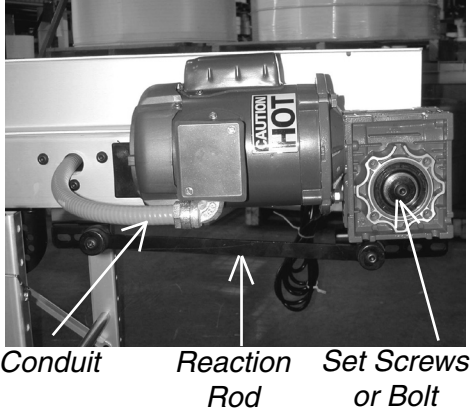


# SECTION V. PREVENTATIVE MAINTENANCE CON'T.

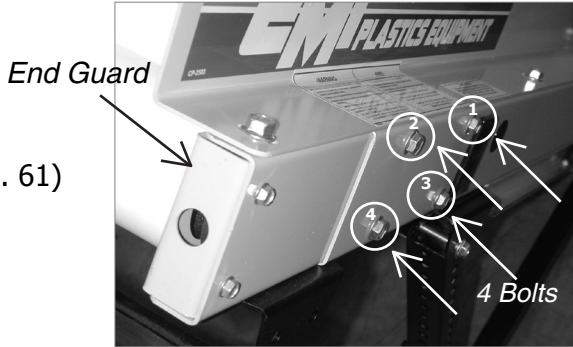
## Bearing Removal - ADK & DDK Conveyors

(Fig. 60)



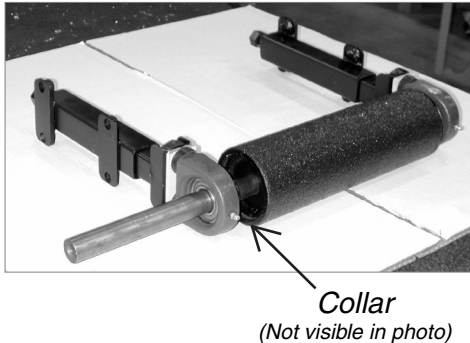
The reducer will have to be removed from the shaft of the drive pulley before the bearing can be changed.

(Fig. 61)



First, make sure power is disconnected from the conveyor. Remove all guards from the reducer (if so equipped). Loosen set screws in collars on both sides of the reducer (if so equipped). Or, remove the bolt from the end of the pulley shaft. Disconnect conduit and wires from the motor. Disconnect reaction rod from the bottom of the reducer. (Fig. 60) Slide the reducer and motor off the shaft. Now the pulley is ready to be removed from the frame.

(Fig. 62)

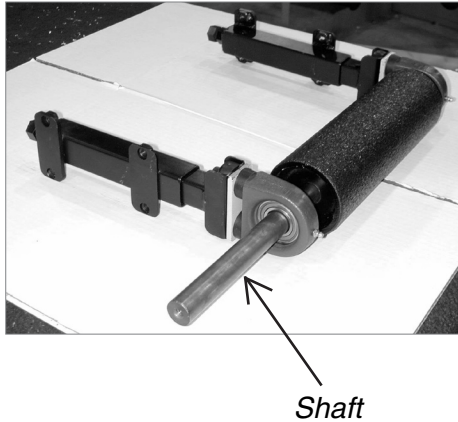


Remove the end guards from the frame. Next, remove the four bolts from each side that holds the bearing brackets to the frame. (Fig. 61) After all bolts are removed, slide the pulley out of the frame. Remove the collars on both bearings by loosening the set screw and tapping the collar with a punch and hammer in the hole provided. (Fig. 62) Tap the collar in the direction opposite to normal shaft rotation.

## SECTION V. PREVENTATIVE MAINTENANCE CON'T.

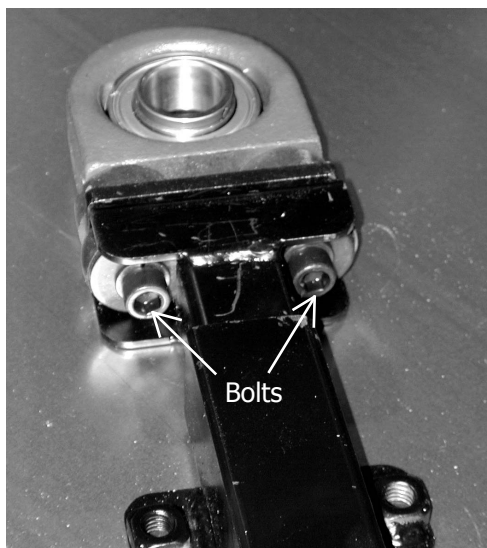
### Bearing Removal - ADK & DDK Conveyors, Con't.

(Fig. 63)



Slide bearings off the shaft and inspect it for any wear. (Fig. 63) If the shaft shows any wear as far as grooves being worn in the shaft from turning in the bearing, it is recommended that you replace the pulley.

(Fig. 64)



*(Drive Bearing Shown)*

Remove the two bolts that hold the bearing to the bracket. (Fig. 64) Bolt the new bearing to the bracket and install back onto the pulley. Make sure the pulley is centered in the frame before the collars are locked on the shaft of the pulley.

**1-800-543-6169**