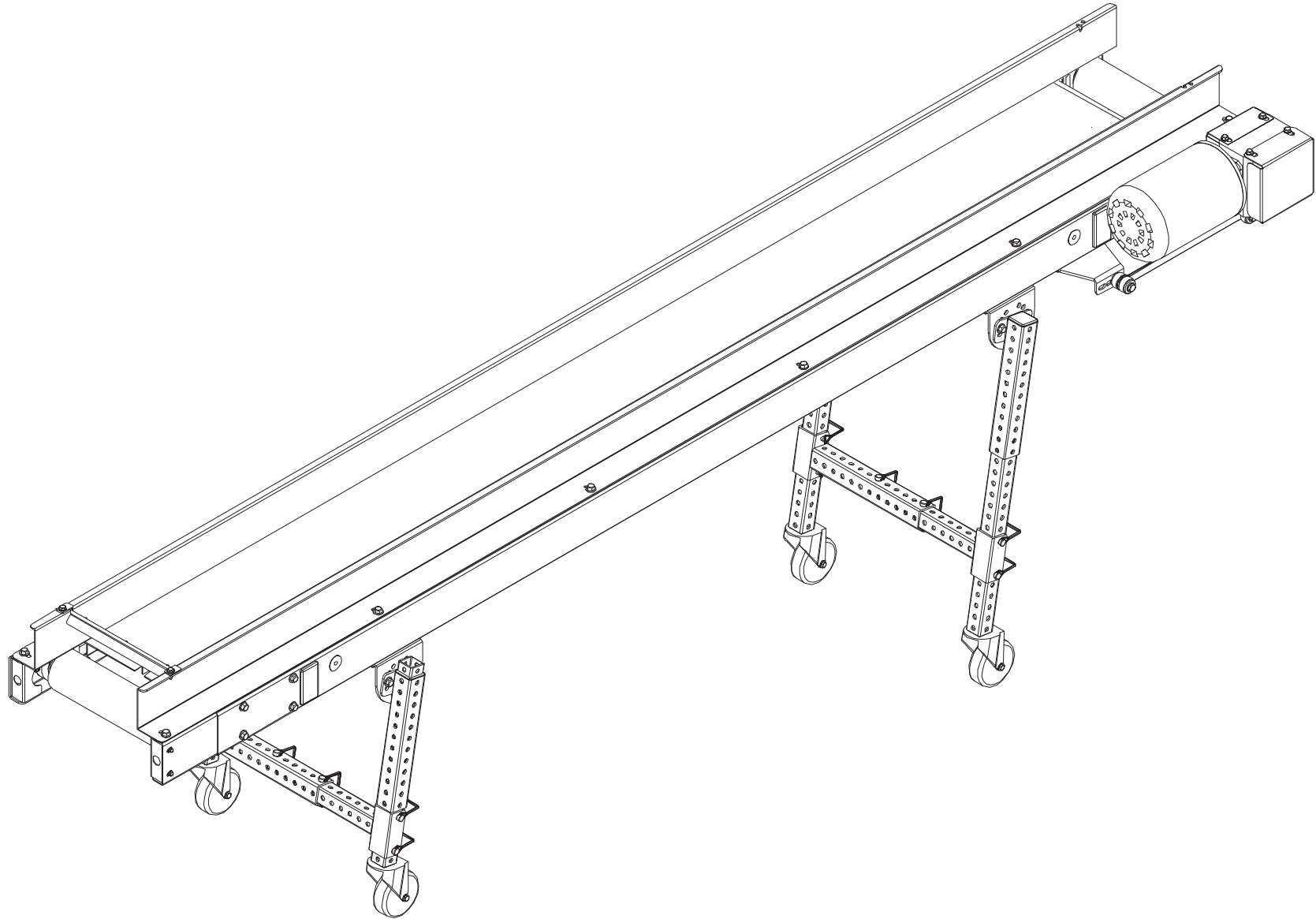


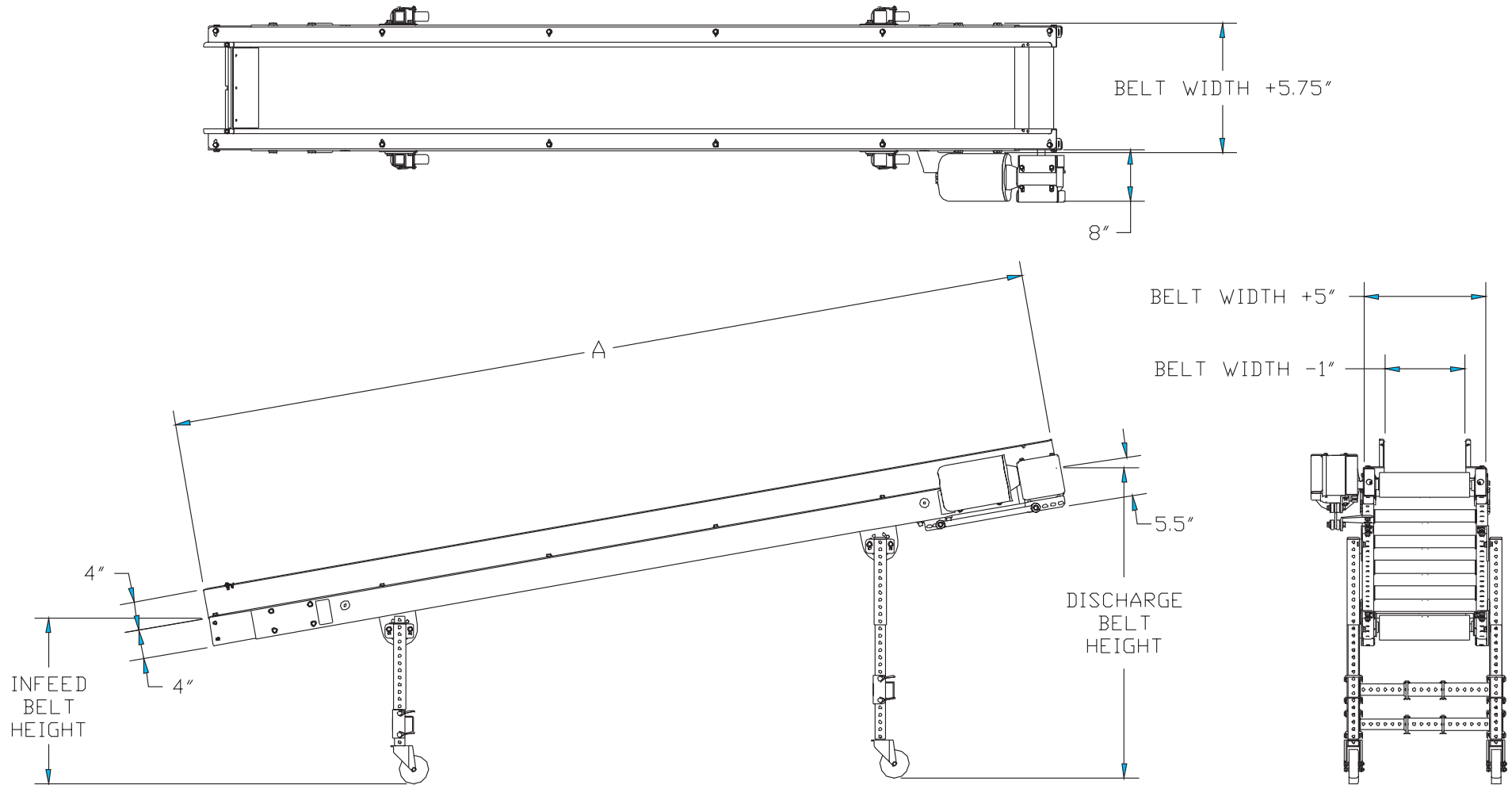
**SECTION VIII. PARTS LISTS AND 3-D DRAWINGS**

DDC CONVEYOR - ASSEMBLED VIEW



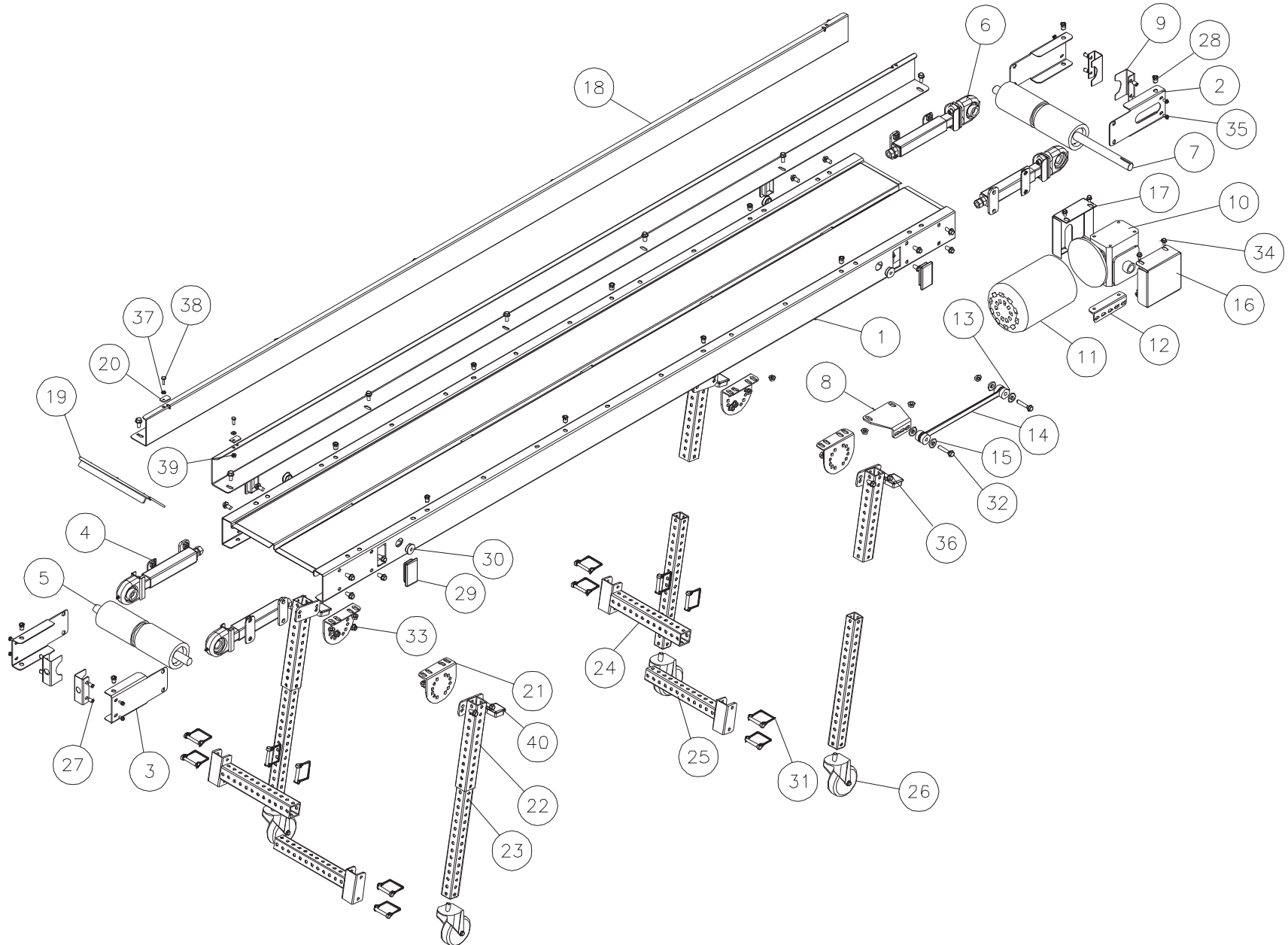
# SECTION VIII. PARTS LISTS AND 3-D DRAWINGS

## DDC CONVEYOR - CATALOG VIEW



**SECTION VIII. PARTS LISTS AND 3-D DRAWINGS**

DDC CONVEYOR - EXPLODED VIEW



## DDC CONVEYOR PARTS LIST

ITEM	QTY	PART DESCRIPTION	EMI P/N
1	1	FRAME ASSY	2M-206-L-W
2	1	DRIVE SIDE PULLEY GUARD	2M-08-2
3	3	PULLEY GUARD	2M-08-1
4	2	TAKE-UP BEARING (TAIL)	2M-232-3
5	1	TAIL PULLEY	2M-224-1-W
6	2	TAKE-UP BEARING (DRIVE)	2M-232-4
7	1	DRIVE PULLEY	2M-210-1-W
8	1	REACTION ROD BRACKET	2M-14-29
9	4	BEARING COVER	2M-67-1
10	1	REDUCER	See BOM
11	1	MOTOR	See BOM
12	1	REACTION ROD BRACKET (REDUCER)	2M-14-28
13	2	BLUE UNIVERSAL MOUNT (THIN)	CP-3178
14	1	REACTION ROD	2M-38-1
15	4	3/8 FLAT WASHER	CP-671
16	1	DIRECT DRIVE GUARD (OUTSIDE)	3E-08-794
17	1	DIRECT DRIVE GUARD (INSIDE)	2M-08-3
18	2	RAILS	2M-33-L
19	1	FLAPPER	2E-249-5-W
20	2	FLAPPER CLIP	2E-01-10

ITEM	QTY	PART DESCRIPTION	EMI P/N
21	4	LEG MOUNTING BRACKET	2M-14-7
22	4	TELESPAR LEG EXTENSION	SEE CHART
23	4	TELESPAR LEG WELDMENT	SEE CHART
24	2	ADJUSTABLE LEG BRACE EXTENSION	SEE CHART
25	2	ADJUSTABLE LEG BRACE	SEE CHART
26	4	CASTOR	CP-1239
27	8	1/4-20 NUTSERT	CP-2132
28	12	3/8-16 NUTSERT	CP-2856
29	4	3"x1-1/2" PLUG	CP-1581
30	4	ROUND PLUG	EL-395
31	12	CLIP PIN	CP-2889
32	2	3/8-16 x 2 HEX HEAD SCREW	CP-3176
33	20	3/8-16 HEX NUT	CP-2869
34	6	5/16-18 x 3/4 HEX HEAD SCREW	CP-2941
35	8	1/4-20 x 1/2 HEX HEAD SCREW	CP-3067
36	46	3/8-16 x 3/4 HEX HEAD SCREW	CP-2890
37	2	1/4 WASHER	CP-654
38	2	1/4-28 x 3/4 HEX HEAD BOLT	CP-125
39	2	1/4-28 HEX NUT	CP-517
40	4	SQUARE PLUG	CP-2924

Part numbers listed in this document are for reference only. When buying replacement parts please provide your conveyor model & serial number to ensure the correct part.