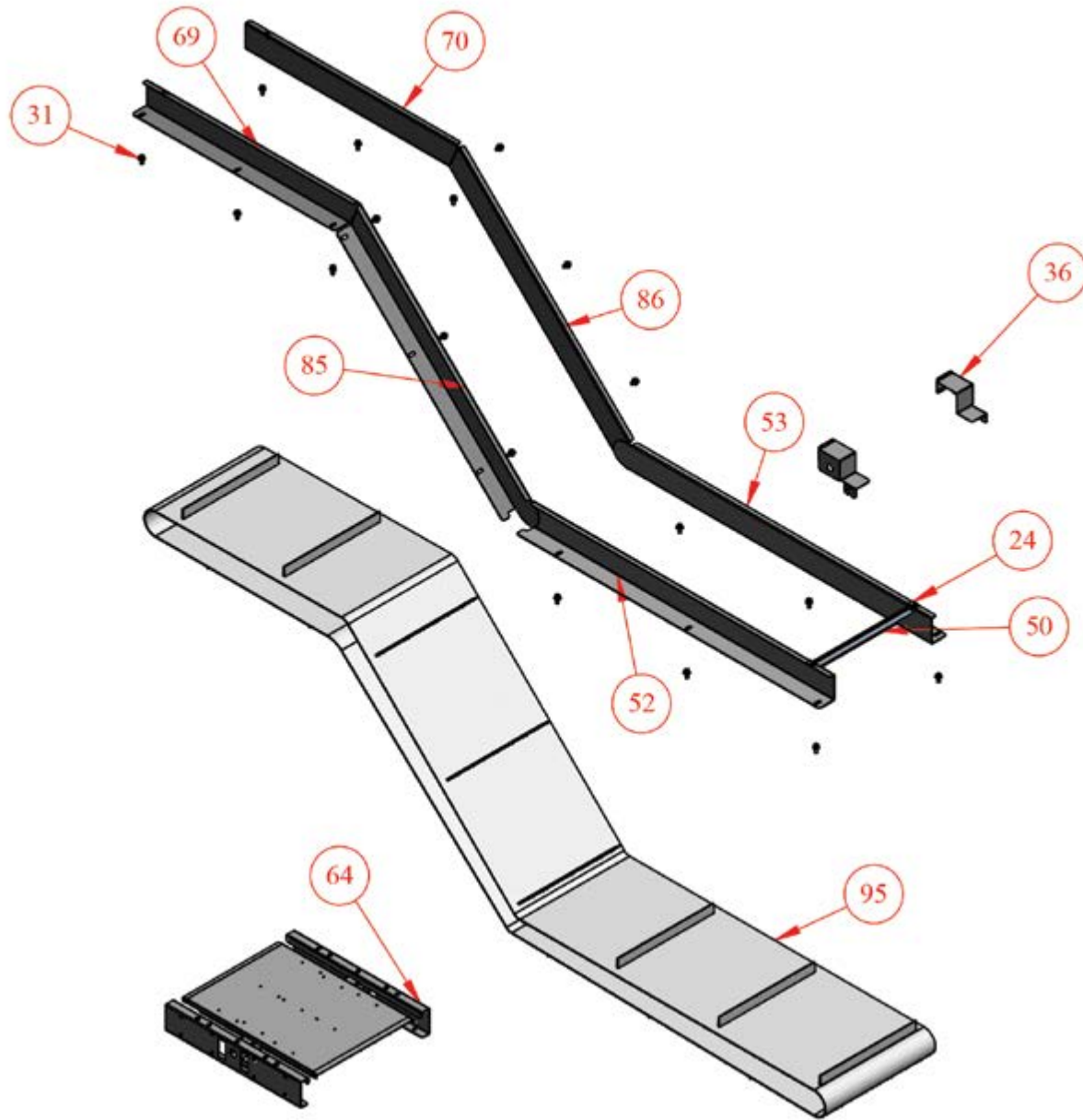
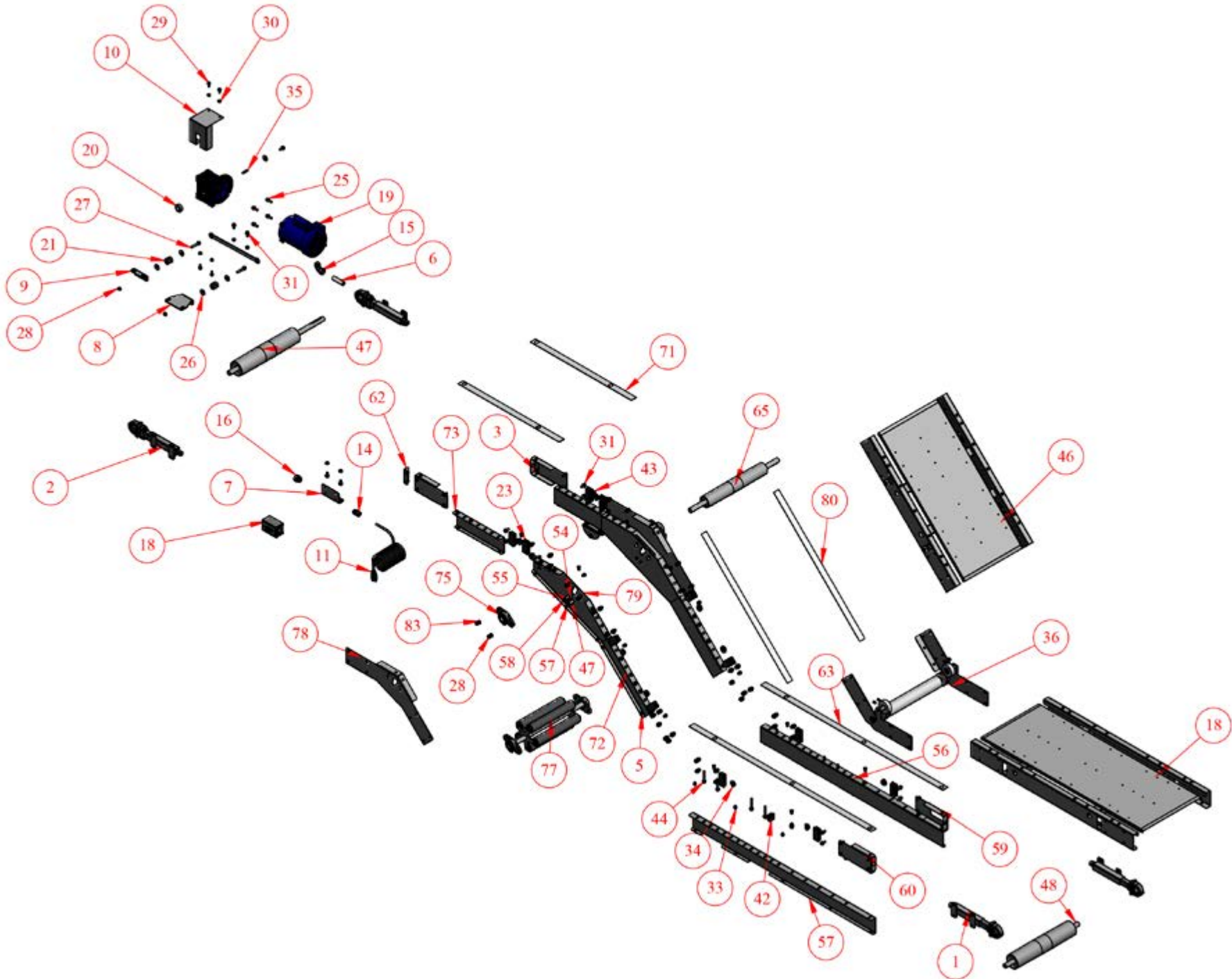


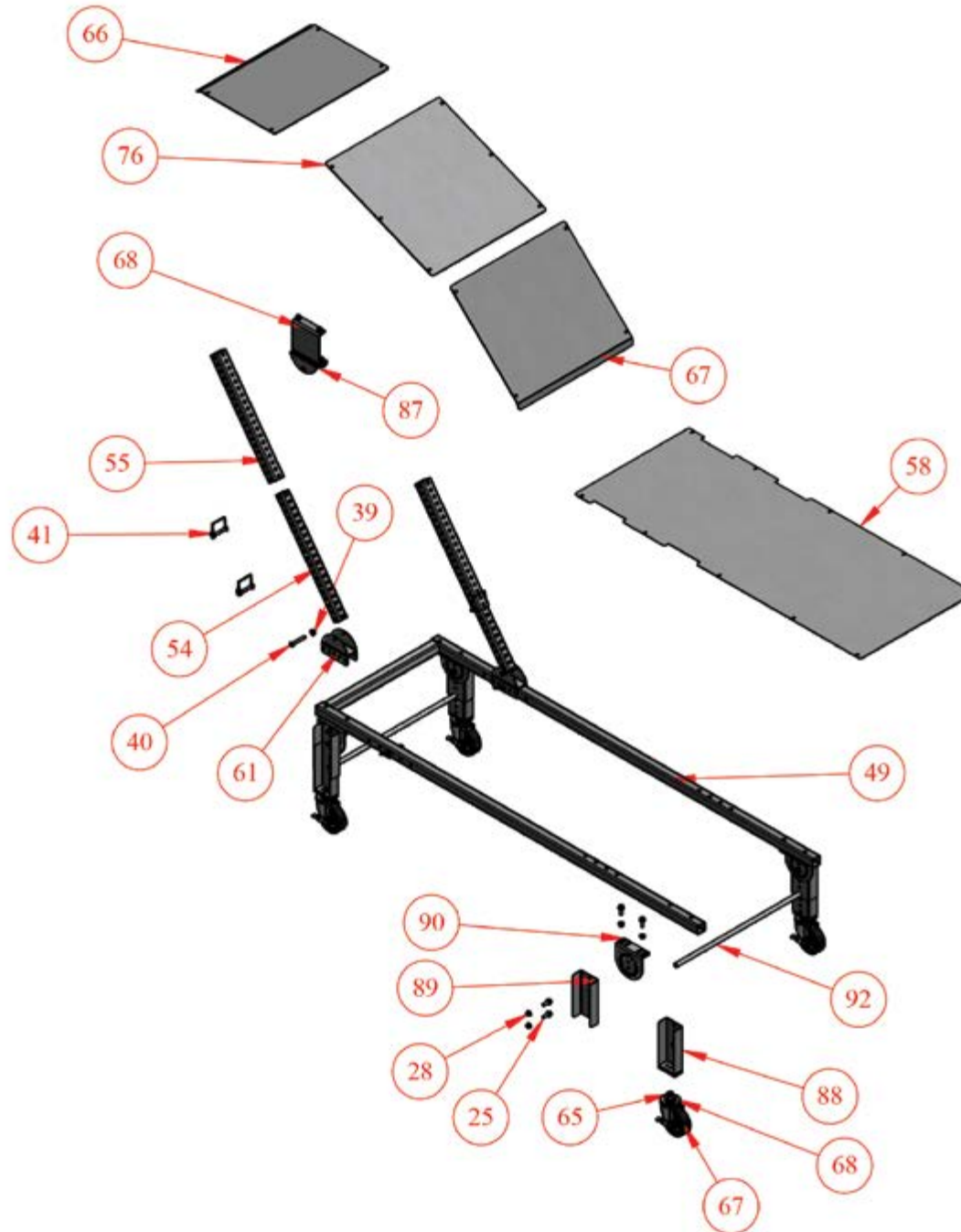
DDZ Merit Line Conveyor - Exploded View



DDZ Merit Line Conveyor - Exploded View



DDZ Merit Line Conveyor - Exploded View



DDZ Merit Line Conveyor - Exploded View

NO.	QTY.	PART NO.	DESCRIPTION
1	2	2M-232-3	TAKE-UP
2	2	2M-232-4	TAKE-UP
3	1	2M-38-1	REACTION ROD
4	1	4E-269-1	BLACK WIRE ASSY FOR STD DRIVE PAK
5	1	4E-269-2	GREEN WIRE ASSY FOR STD DRIVE PAK
6	1	4E-62-1	CONDUIT FOR STD DRV PAK
7	1	2M-14-3	FG-5 SWITCH MOUNTING BRACKET
8	1	2M-14-29	REACTION ROD BRACKET
9	1	2M-14-28-1	REACTION ROD BRACKET
10	1	2M-08-12	050 MOTOVARIO GEARBOX
11	1	2E-263-1	15' POWER CORD
12	1	EL-533	SQ.D. HEATER A9.85
13	3	EL-455	WIRE NUT "Y" TYPE
14	1	EL-358	APPLETON CORD GRIP CONNECTOR #CG-3150
15	1	EL-353	90 DEG .500 INCH CONDUIT FITTING (REF RACO)
16	1	EL-354	.500 INCH STRAIGHT CONNECTOR
17	3	EL-301	RING TERMINAL 14-16 AWG, #8 (STUD)
18	1	EL-168	SWITCH - FG5 SQ. D.
19	1	EL-116B	LINCOLN LM24598 1/3 HP 115/230/60/1
20	1	CP-1201	LOCKING COLLAR 1.000IDx1.625ODx.625TH
21	2	CP-3178	UNIVERSAL MOUNT (NARROW) #60166-4
22	1	CP-3289	MOTOVARIO GEAR REDUCER #NMRV050-40-56C
23	12	CP-1581	1 1/2 x 3" BLACK PLASTIC CAP
24	2	EL-394	HEYCO SNAP BUSHING #2182
25	26	CP-2939	HEX SERRATED FLANGE SCREW 0.375-16x1.000" ZINC PLATED
26	5	CP-671	FLAT WASHER .407IDx1.250ODx.125TH
27	2	CP-3049	HEX SERRATED FLANGE SCREW 0.375-16x2.000" ZINC PLATED
28	82	CP-2869	SERRATED FLANGE NUT 0.375-16 ZINC PLATED
29	4	CP-2941	HEX SERRATED FLANGE SCREW 0.313-18x0.750" ZINC PLATED
30	8	CP-3786	5/16 FLANGE HEX NUT
31	105	CP-2890	HEX SERRATED FLANGE SCREW 0.375-16x0.750" ZINC PLATED
32	30	CP-3067	HEX SERRATED FLANGE SCREW 0.250-20x0.500" ZINC PLATED

Part numbers listed in this document are for reference only. When buying replacement parts please provide your conveyor model & serial number to ensure the correct part.

DDZ Merit Line Conveyor - Exploded View

NO.	QTY.	PART NO.	DESCRIPTION
33	22	CP-3068	HEX FLANGE NUT 0.25-20
34	7	EL-395	HEYCO DOME PLUG #2733
35	1	CP-1003	1/4"SQ x 1.500 KEY
36	1	DDK-227-3-W	ADK/DDK TRANSITION ASSY
37	8	CP-2132	1/4 - 20 AVIBANK NUTSERT
38	6	CP-3342	FLAT WASHER .375
39	24	CP-3299	3/8-16 SERRATED FLANGE
40	4	CP-3296	HEX SOCKET BUTTON HEAD SCREW .375-16 x 2.500
41	5	CP-2889	SAFETY SNAP PIN McMASTER CARR #98416A018
42	4	CP-2321	PLASTIC CAP 1.500x1.500 SQUARE
43	20	CP-2856	HEX NUT INSERT 3/8-16 GRIP RANGE .027-.150 (AKPT6P616)
44	8	CP-3050	HEX SERRATED FLANGE SCREW 0.375-16x2.500" ZINC PLATED
45	1	2M-206-L-W-DV	DD FRAME WELD ASSY.
46	1	2M-206-L-W-DV	DD FRAME WELD ASSY.
47	1	4M-210-6-W	WELD ASSY FOR STEEL DRIVE
48	1	4M-224-2-W	WELD ASSY FOR STEEL TAIL
49	1	4M-241-1-W-L	SUB-BASE WELD ASSY
50	1	2E-249-5-W	NEW STYLE LEXAN FLAPPER
51	2	2E-01-10	FLAPPER CLIP
52	1	2M-33-151-L	SIDE RAIL
53	1	2M-33-152-L	SIDE RAIL
54	2	4M-36-14-L	TELESPAR LEG
55	2	4M-36-15-L	TELESPAR EXT
56	1	2M-44-14-L	4" LH BOTTOM BELT GUARD SIDE
57	1	2M-44-15-L	4" RH BOTTOM BELT GUARD SIDE
58	1	2M-45-11-W-L	BOTTOM BELT TRAY
59	1	2M-08-2	DRIVE SIDE PULLEY GUARD
60	3	2M-08-1	PULLEY GUARD

Part numbers listed in this document are for reference only. When buying replacement parts please provide your conveyor model & serial number to ensure the correct part.

DDZ Merit Line Conveyor - Exploded View

NO.	QTY.	PART NO.	DESCRIPTION
61	2	2M-229-5	DDK ADJUSTING SUPPORT
62	4	2M-67-1	BEARING COVER
63	2	4M-31-26-L	SIDE RAIL SPACER
64	1	2M-206-L-W-DV	DD FRAME WELD ASSY.
65	1	3E-240-123-W	TOP IDLER ROLLER
66	1	3M-45-81-1-L-W	BOTTOM BELT TRAY FOR DDZ
67	1	3M-45-81-2-L-W	BOTTOM BELT TRAY FOR DDZ
68	2	3E-31-429	DDK ADJUST BRACKET SPACER
69	1	3E-33-3267-L-(L/R)	4"-90DEG SIDE RAIL FOR NOSE OVER
70	1	3E-33-3267-L-(L/R)	4"-90DEG SIDE RAIL FOR NOSE OVER
71	2	4M-31-26-25	SIDE RAIL SPACER
72	2	3M-44-58-L	4"DROP BOTTOM SIDE GUARDS
73	2	3M-44-58-L	4"DROP BOTTOM SIDE GUARDS
74	2	3E-40-88-BI-1	SUPPORT
75	2	CP-834	2 BOLT FLANGE BEARING
76	1	3M-45-81-T-W	BOTTOM BELT TRAY FOR DDZ
77	1	3M-240-13-W	RETURN IDLER ROLLER
78	2	ACN-244-4	45 DEG TRANSITION SIDE
79	2	3M-44-57-T	TRANSITION SIDE FOR A DDC N.O.
80	2	4M-31-27-L	1/16" x 1 1/2" SIDE RAIL SPACER
81	2	CP-131	HEX HEAD SCREW .375-24 x 2.500
82	4	CP-513	HEX NUT .375-24
83	8	CP-465	CARRIAGE BOLT .375-16 x 1.000
84	4	CP-102	HEX HEAD SCREW .313-18 x 2.000
85	1	3E-33-3266-L-(L/R)	SIDE RAILFOR 45 DEG DDZ
86	1	3E-33-3266-L-(L/R)	SIDE RAILFOR 45 DEG DDZ
87	2	4M-14-23	CONV. TO SUB-BASE LEG MNT.
88	4	2E-236-X	LEG WELD ASSY
89	4	2E-36-X	LEG EXTENSION
90	4	2M-14-16	LEG MOUNTING BRACKET
91	4	CP-508	HEX JAM NUT .500-13
92	2	3E-41-1062-L	CROSS BRACE
93	4	CP-1239	SWIVEL CASTER, 4"X1 3/8"
94	4	4E-31-28	SPACER FOR K-3, K-4 CASTORS
95	1	BELT	BELT FOR DDZ