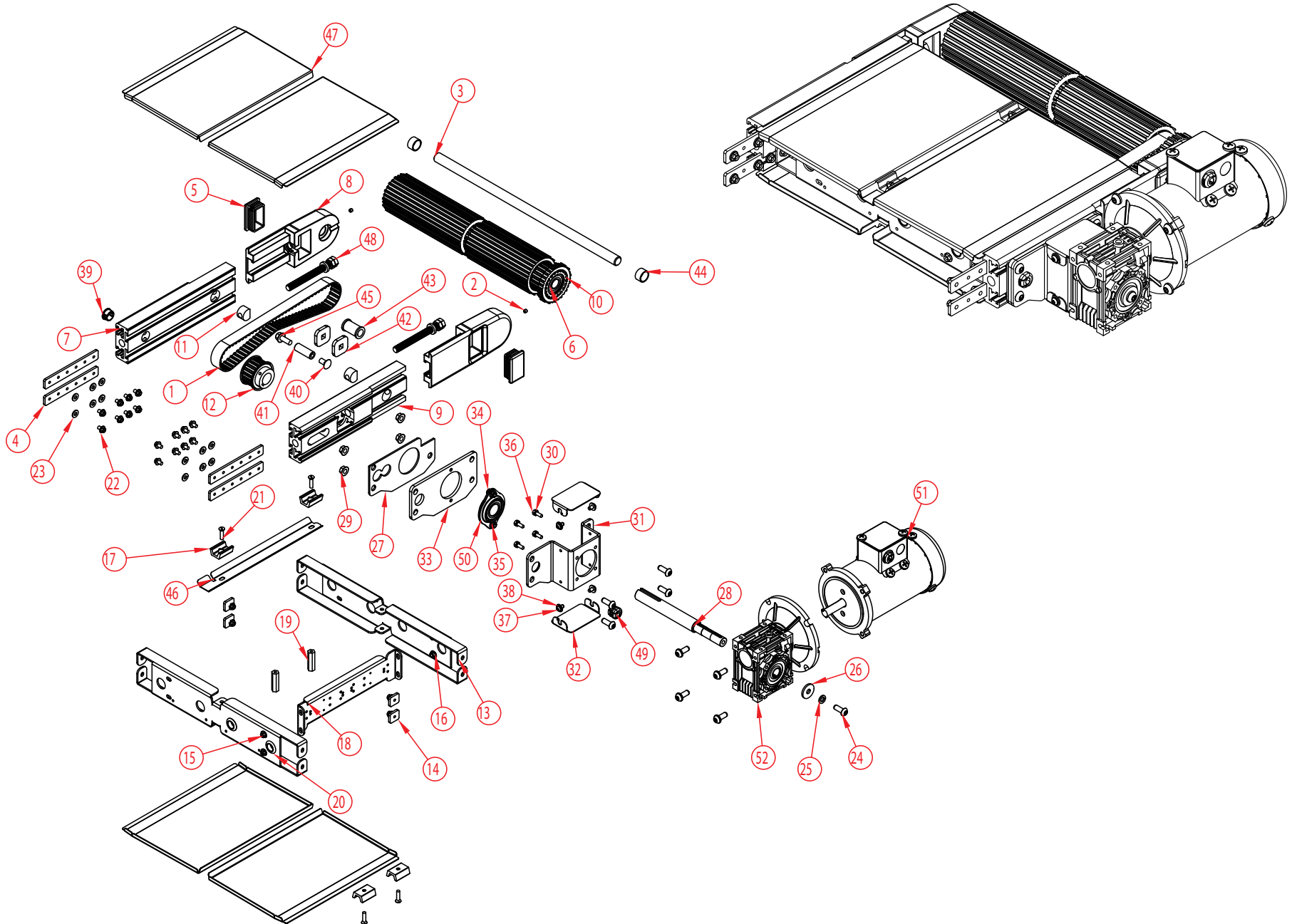


Section VIII. Parts Lists and 3-D Drawings

EA External Timing Belt Drive - Assembled and Exploded View



Section VIII. Parts Lists and 3-D Drawings

EA External Timing Belt Drive - Parts List

QTY.	PART NO.	DESCRIPTION	QTY.	PART NO.	DESCRIPTION	
1	CP-4511	TIMING BELT 3/8" PITCH 1" WIDE 30" LONG	27	1	2X-14-2-1-3	OUTSIDE MOTOR BRACKET SPACER
2	CP-350	SOCKET HEAD SET SCREW .250-20 x .250	28	1	2X-21-7	SINGLE OUTPUT SHAFT FOR EA CONVEYOR
3	2X-21-1-W (CF)	TAIL SHAFT FOR EA CONVEYOR	29	4	CP-3299	SERRATED FLANGE NUT 0.375-16 BLACK OXIDE
4	2X-27-4	FRAME CONNECTION PLATE	30	4	CP-7031	WASHER, M6, EXTERNAL TOOTH LOCK WASHER
5	CP-3532	PLASTIC CAP 1.500x2.500 RECTANGLE	31	1	2X-14-7-1	MOUNTING BRACKET FOR 040 REDUCER
6	CP-4592	20MM BALL BEARING SELF ALIGNING	32	2	2X-14-7-3	COVER FOR MOUNTING BRACKET
7	2X-44-2-2	FRAME SIDE FOR DRIVE HEAD	33	1	2X-14-7-2	MOUNTING BRACKET FOR BEARING
8	2X-14-1-1	TAKE-UP BRACKET FOR EA CONVEYOR	34	2	CP-282	SLOTTED FLAT HEAD SCREW .250-20 x .750
9	2X-44-2-1	FRAME SIDE FOR DRIVE HEAD	35	2	CP-600	1/4-20 PLATED ELASTIC LOCK NUT
10	2X-10-1-W (CF)	DRIVE PULLEY FOR EA CONVEYOR	36	4	CP-7337	HEX HEAD SCREW M6 x 16
11	2X-55-1	TAKE-UP NUT FOR EA CONVEYOR	37	4	CP-4536	1/4-20 X 1/2" BLACK OXIDE TORX BUTTON CAP SCREW
12	2X-10-2	19 TOOTH L SERIES TIMING PULLEY	38	4	CP-3343	LOCK WASHER .250 SPLIT RING
13	2X-41-2-W (CF)	FRAME BRACE FOR DRIVE HEAD	39	1	CP-1240	7/8" GROOVE DIAMETER RUBBER GROMMET
14	2X-27-5-100	INSIDE FRAME NUT	40	1	CP-457	CARRIAGE BOLT .375-16 x .750
15	CP-3067	HEX SERRATED FLANGE SCREW 0.250-20x0.5" ZINC PLATED	41	1	4S-41-37-175	5/8" DIAMETER SST CROSS BRACE
16	CP-3068	HEX FLANGE NUT 0.25-20	42	2	2X-14-6-3	LEG MOUNTING BRACKET STOP
17	2X-19-1	SLIDE BED RETAINER OR CLAMP	43	1	2X-15-1	DELTRIN IDLER ROLLER
18	2X-29-1	INSIDE CONTROL SUPPORT	44	2	CR-31-27-14	25mm O.D. DRIVE SHAFT SPACER
19	2X-55-3	SLIDE TRAY HOLD DOWN NUT	45	1	CP-2939	HEX SERRATED FLANGE SCREW 0.375-16x1" ZINC PLATED
20	CP-2376	RUBBER GROMMET	46	1	2X-45-11	SLIDE BED WATER GUARD
21	CP-259	SLOTTED FLAT HEAD SCREW .250-20 x 1.000	47	4	2X-45-1-W-1300 (CF)	SLIDE BED FOR STANDARD FRAME
22	CP-4564	HEX SERRATED FLANGE SCREW 0.250-20x0.375" ZINC PLATED	48	2	2X-232-1	WELDMENT FOR TAKE-UP BOLT
23	CP-654	FLAT WASHER .250 SAE	49	1	EL-7245	CORD GRIP
24	CP-4534	3/8-16 X 1" BLACK OXIDE TORX BUTTON CAP SCREW	50	1	CP-674	MANKO BEARING
25	CP-3345	LOCK WASHER .375 SPLIT RING	51	1	EL-128B	MOTOR
26	CP-3393	3/8" FLAT WASHER	52	1	CP-7560	MOTOVARIO GEARBOX NMRV-040-60-56C