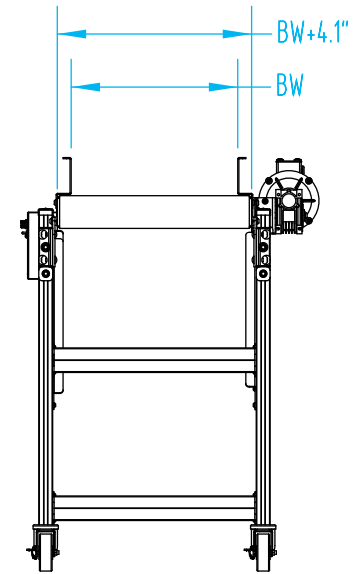
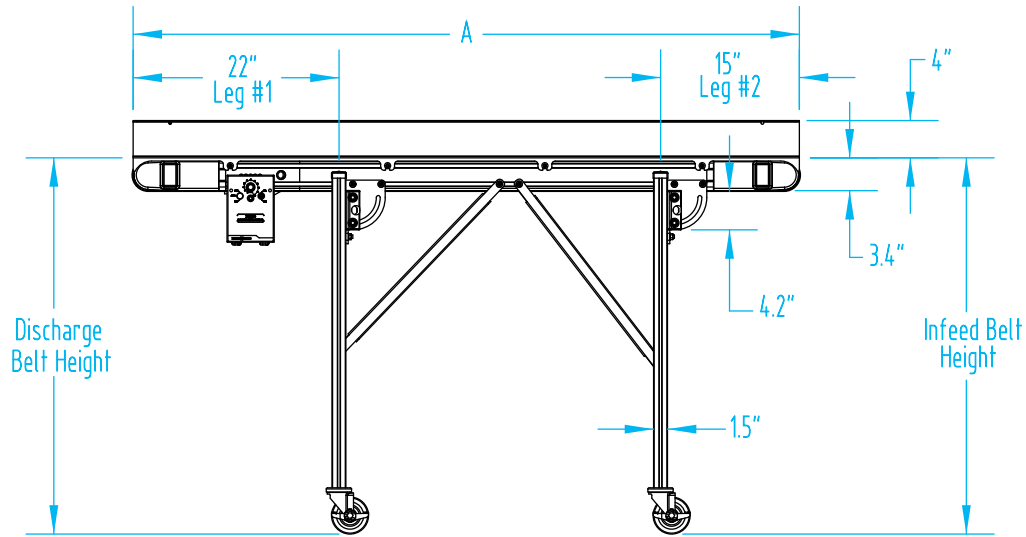
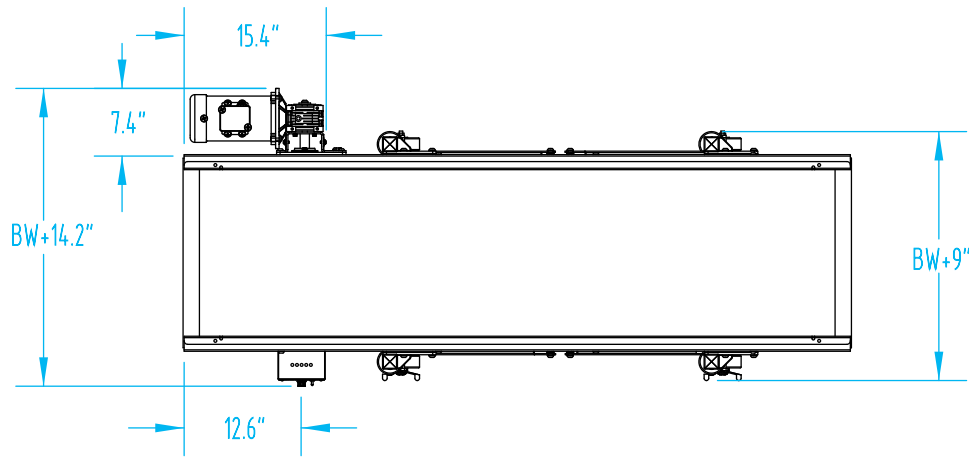


**EAF Conveyor - Assembled View**

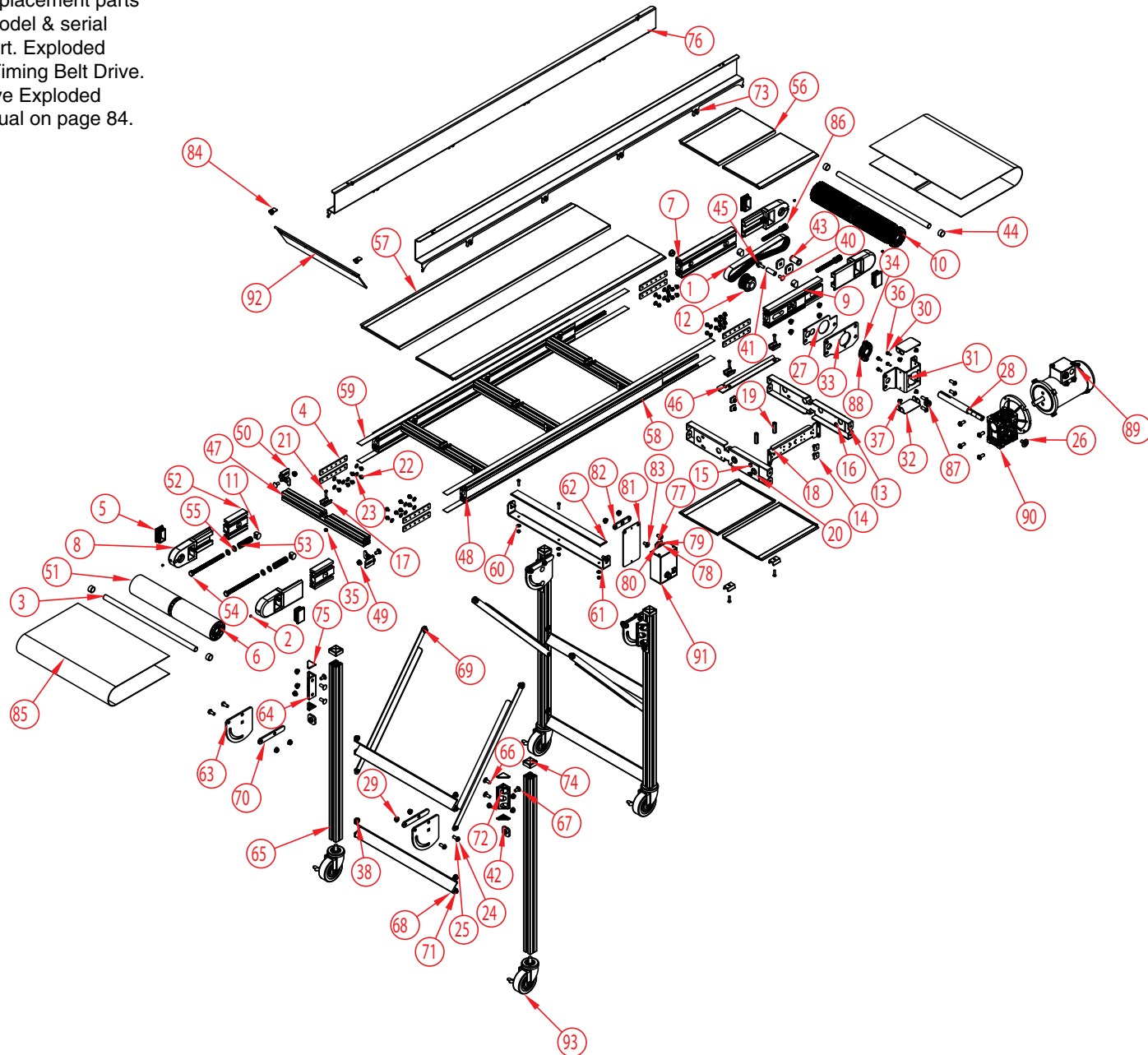
### EAF Conveyor - Dimensional Drawing



## Section VIII. Parts Lists and 3-D Drawings

## EAF Conveyor - Exploded View

Part numbers listed in this document are for reference only. When buying replacement parts please provide your conveyor model & serial number to ensure the correct part. Exploded views are shown with External Timing Belt Drive. Find Chain Drive and Direct Drive Exploded Views online and in the EA Manual on page 84.



Section VIII. Parts Lists and 3-D Drawings

**EAF Conveyor - Parts List**

	QTY.	PART NO.	DESCRIPTION		QTY.	PART NO.	DESCRIPTION
1	1	CP-4511	TIMING BELT 3/8" PITCH 1" WIDE 30" LONG	25	19	CP-3345	LOCK WASHER .375 SPLIT RING
2	4	CP-350	SOCKET HEAD SET SCREW .250-20 x .250	26	1	CP-3393	3/8" FLAT WASHER
3	2	Contact EMI	TAIL SHAFT FOR EA CONVEYOR	27	1	2X-14-2-1-3	OUTSIDE MOTOR BRACKET SPACER
4	8	2X-27-4	FRAME CONNECTION PLATE	28	1	2X-21-7	SINGLE OUTPUT SHAFT FOR EA CONVEYOR
5	4	CP-3532	PLASTIC CAP 1.500x2.500 RECTANGLE	29	44	CP-3299	SERRATED FLANGE NUT 0.375-16 BLACK OXIDE
6	4	CP-4592	20MM BALL BEARING SELF ALIGNING	30	4	CP-7031	WASHER, M6, EXTERNAL TOOTH LOCK WASHER
7	1	2X-44-2-2	FRAME SIDE FOR DRIVE HEAD	31	1	2X-14-7-1	MOUNTING BRACKET FOR 040 REDUCER
8	4	2X-14-1-1	TAKE-UP BRACKET FOR EA CONVEYOR	32	2	2X-14-7-3	COVER FOR MOUNTING BRACKET
9	1	2X-44-2-1	FRAME SIDE FOR DRIVE HEAD	33	1	2X-14-7-2	MOUNTING BRACKET FOR BEARING
10	1	Contact EMI	DRIVE PULLEY FOR EA CONVEYOR	34	2	CP-282	SLOTTED FLAT HEAD SCREW .250-20 x .750
11	4	2X-55-1	TAKE-UP NUT FOR EA CONVEYOR	35	9	CP-600	1/4-20 PLATED ELASTIC LOCK NUT
12	1	2X-10-2	19 TOOTH L SERIES TIMING PULLEY	36	4	CP-7337	HEX HEAD SCREW M6 x 16
13	2	2X-41-2-W (CF)	FRAME BASE FOR DRIVE HEAD	37	26	CP-4536	1/4-20 X 1/2" BLACK OXIDE TORX BUTTON CAP SCREW
14	4	2X-27-5-100	INSIDE FRAME NUT	38	26	CP-3343	LOCK WASHER .250 SPLIT RING
15	4	CP-3067	HEX SERRATED FLANGE SCREW 0.250-20x0.5" ZINC PLATED	39	1	CP-1240	7/8" GROOVE DIAMETER RUBBER GROMMET
16	4	CP-3068	HEX FLANGE NUT 0.25-20	40	15	CP-457	CARRIAGE BOLT .375-16 x .750
17	8	2X-19-1	SLIDE BED RETAINER OR CLAMP	41	1	4S-41-37-175	5/8" DIAMETER SST CROSS BRACE
18	1	2X-29-1	INSIDE CONTROL SUPPORT	42	6	2X-14-6-3	LEG MOUNTING BRACKET STOP
19	2	2X-55-3	SLIDE TRAY HOLD DOWN NUT	43	1	2X-15-1	DELTRIN IDLER ROLLER
20	2	CP-2376	RUBBER GROMMET	44	4	CR-31-27-14	25mm O.D. DRIVE SHAFT SPACER
21	11	CP-259	SLOTTED FLAT HEAD SCREW .250-20 x 1.000	45	1	CP-2939	HEX SERRATED FLANGE SCREW 0.375-16x1" ZINC PLATED
22	34	CP-4564	HEX SERRATED FLANGE SCREW 0.250-20x0.375" ZINC PLATED	46	1	2X-45-11	SLIDE BED WATER GUARD
23	30	CP-654	FLAT WASHER .250 SAE	47	4	2X-41-1-W (CF)	FRAME RUNG FOR EA CONVEYOR
24	19	CP-4534	3/8-16 X 1" BLACK OXIDE TORX BUTTON CAP SCREW	48	2	2X-44-1-L (CF)	FRAME SIDE FOR EA CONVEYOR

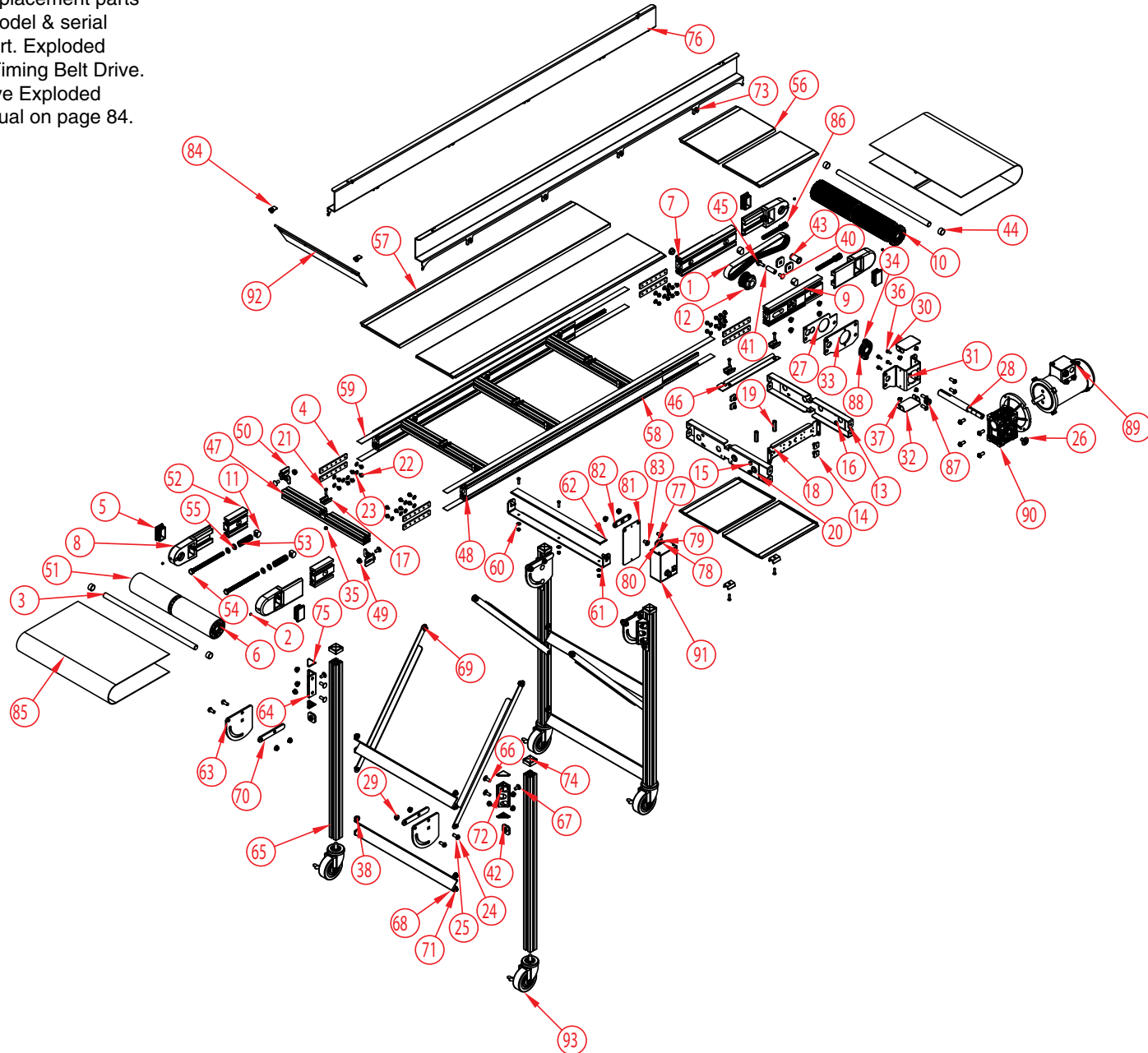
Part numbers listed in this document are for reference only. When buying replacement parts please provide your conveyor model & serial number to ensure the correct part.

Exploded views are shown with External Timing Belt Drive. Find Chain Drive and Direct Drive Exploded Views online and in the EA Manual on page 84.

## Section VIII. Parts Lists and 3-D Drawings

**EAF Conveyor - Exploded View - Continued**

Part numbers listed in this document are for reference only. When buying replacement parts please provide your conveyor model & serial number to ensure the correct part. Exploded views are shown with External Timing Belt Drive. Find Chain Drive and Direct Drive Exploded Views online and in the EA Manual on page 84.



Section VIII. Parts Lists and 3-D Drawings

**EAF Conveyor - Parts List - Continued**

	QTY.	PART NO.	DESCRIPTION		QTY.	PART NO.	DESCRIPTION
49	14	CP-2869	SERRATED FLANGE NUT 0.375-16 ZINC PLATED	72	6	CP-3342	FLAT WASHER .375
50	8	2X-09-1	GUSSET FOR FRAME CROSS BRACE	73	12	CP-4533	3/8-16 X 3/4" BLACK OXIDE TORX BUTTON CAP SCREW
51	1	2X-24-1-W (CF)	TAIL PULLEY FOR EA CONVEYOR	74	4	CP-4537	1.5" SQUARE DIP MOLDED END CAP BLACK
52	2	2X-35-1-413	TAKE-UP GUIDE FOR TAIL	75	8	2X-39-1	CAP FOR 1.5" GUSSET PROFILE
53	2	CP-7234	SPRING, 3/4" O.D. X 6-7/8" LONG	76	2	2X-33-1-1-L (CF)	4"-90 DEGREE ALUMINUM RAIL FOR EAF
54	2	CP-4509	1/2-13 x 7" HX HD SCREW	77	2	CP-271	SLOTTED ROUND HEAD SCREW #10-32 x .500 PAN
55	4	2X-42-1-S	TAKE-UP WASHER SST	78	2	CP-516	HEX NYLON LOCKING NUT # 10-32
56	4	2X-45-1-W-1300 (CF)	SLIDE BED FOR STANDARD FRAME	79	4	CP-656	FLAT WASHER .187
57	2	2X-45-1-W-L (CF)	SLIDE BED FOR STANDARD FRAME	80	2	CP-710	#10 SPLIT LOCK WASHER
58	4	2X-67-1-L (CF)	10MM T-SLOT BLACK TRIM	81	1	2X-27-36-1	SST MOUNTING PLATE
59	4	2X-67-2-L (CF)	UHMW W/ ADHESIVE BACK	82	1	2X-27-36-2	SST SPACER PLATE
60	3	CP-3340	FLAT WASHER .250	83	2	CP-3293	HEX SOCKET BUTTON HEAD SCREW .375-16 x .750
61	1	2X-29-11-W (CF)	BELT SUPPORT	84	2	2E-01-10	FLAPPER CLIP
62	1	3E-31-398-L (CF)	1/4" THICK UHMW SPACER	85	2	BELT	BELT
63	4	2X-14-6-1	LEG MOUNTING BRACKET	86	2	2X-232-1	WELDMENT FOR TAKE-UP BOLT
64	4	2X-14-5-3	LEG MOUNTING BRACKET	87	1	EL-7245	CORD GRIP
65	4	2X-36-1-L (CF)	LEG FOR EA CONVEYOR	88	1	CP-674	MANKO BEARING
66	8	CP-4532	CARRIAGE BOLT .375-16 x 1.000 BLACK OXIDE	89	1	EL-128B	MOTOR
67	8	CP-4540	CARRIAGE BOLT .375-16 x 0.75 BLACK OXIDE	90	1	CP-7560	MOTOVARIO GEARBOX NMRV-040-60-56C
68	4	2X-41-3-W (CF)	ALUMINUM LEG CROSS BRACE	91	1	EL-2566	KBWM 120 CONTROLLER
69	4	2X-41-4-L (CF)	KNEE BRACE FOR LEGS	92	1	2S-249-7-W (CF)	4" LEXAN FLAPPER
70	4	2X-14-6-2	LEG MOUNTING BRACKET SPACER	93	4	CP-1239	SWIVEL CASTER, 4" 1 3/8"
71	22	CP-3297	SERRATED FLANGE NUT 0.25-20 BLACK OXIDE				

Part numbers listed in this document are for reference only. When buying replacement parts please provide your conveyor model & serial number to ensure the correct part.

Exploded views are shown with External Timing Belt Drive. Find Chain Drive and Direct Drive Exploded Views online and in the EA Manual on page 84.