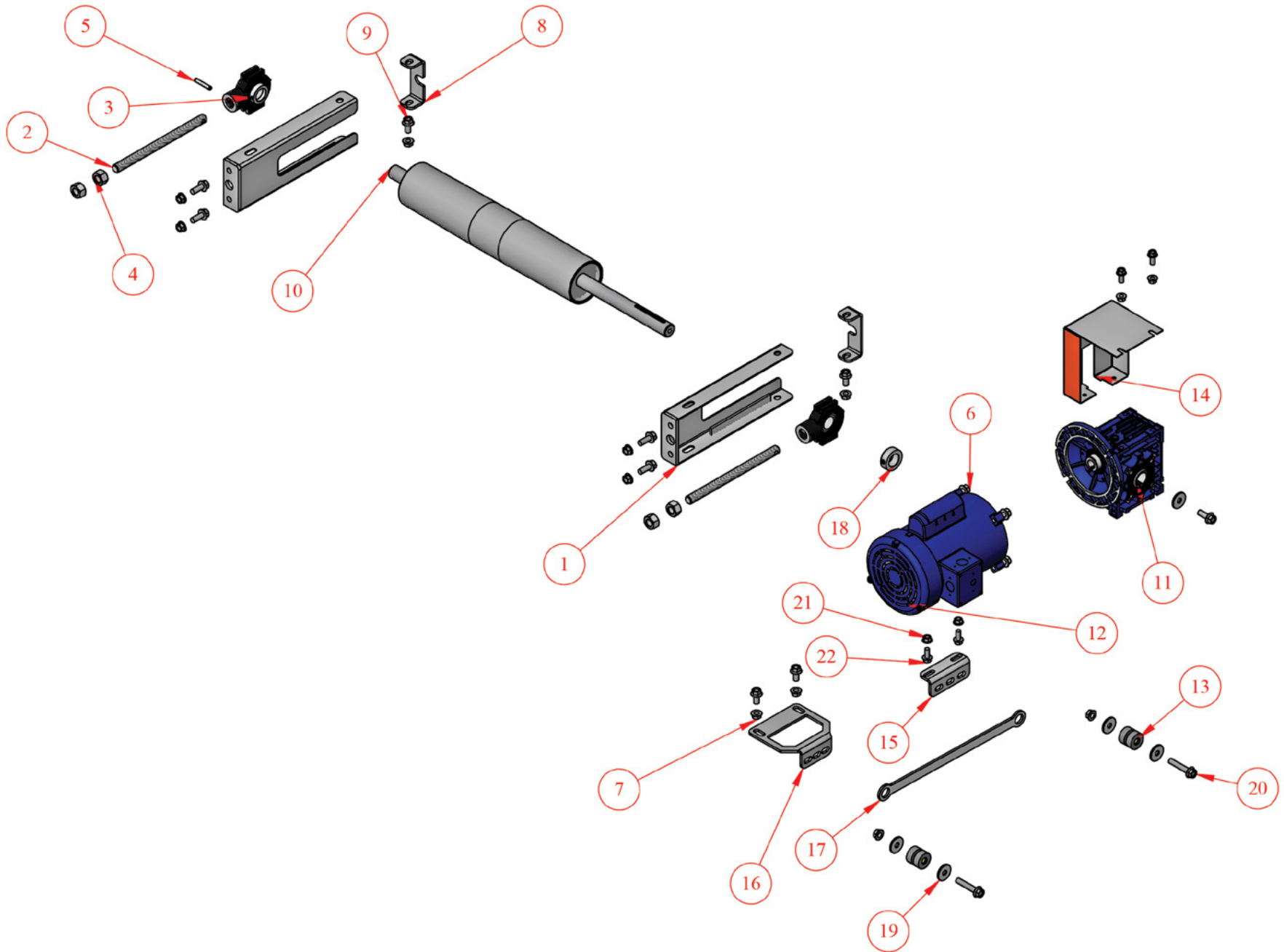


RM Conveyor Drive Section for Double V-Guide - Exploded View



RM Conveyor Drive Section for Double V-Guide - Exploded View

NO.	QTY.	PART NO.	DESCRIPTION
1	2	4E-258-2-DV	TAIL/DRIVE SIDE
2	2	2E-32-4	THREADED ROD
3	2	CP-822	BEARING - RUPL - 16 X 1" BORE
4	4	CP-505	HEX NUT .625-11
5	2	CP-1360	ROLL PIN .250 x 1.500
6	9	CP-2939	HEX SERRATED FLANGE SCREW 0.375-16x1.000" ZINC PLATED
7	10	CP-2869	SERRATED FLANGE NUT 0.375-16 ZINC PLATED
8	2	4E-14-1-DV	END BRACKET
9	4	CP-2890	HEX SERRATED FLANGE SCREW 0.375-16x0.750" ZINC PLATED
10	1	4M-210-6-W	WELD ASSY FOR STEEL DRIVE
11	1	CP-3290	MOTOVARIO GEAR REDUCER #NMRV050-40-56C
12	1	EL-116B	LINCOLN LM24598 1/3 HP 115/230/60/1
13	2	CP-3178	UNIVERSAL MOUNT (NARROW) #60166-4
14	1	2M-08-12	050 MOTOVARIO GEARBOX
15	1	2M-14-28-1	REACTION ROD BRACKET
16	1	2M-14-29-3	REACTION ROD BRACKET
17	1	2M-38-1	REACTION ROD
18	1	CP-1201	LOCKING COLLAR 1.000IDx1.625ODx.625TH
19	5	CP-671	FLAT WASHER .407IDx1.250ODx.125TH
20	2	CP-3049	HEX SERRATED FLANGE SCREW 0.375-16x2.000" ZINC PLATED
21	4	CP-3786	5/16 FLANGE HEX NUT
22	4	CP-2941	HEX SERRATED FLANGE SCREW 0.313-18x0.750" ZINC PLATED

Part numbers listed in this document are for reference only. When buying replacement parts please provide your conveyor model & serial number to ensure the correct part.