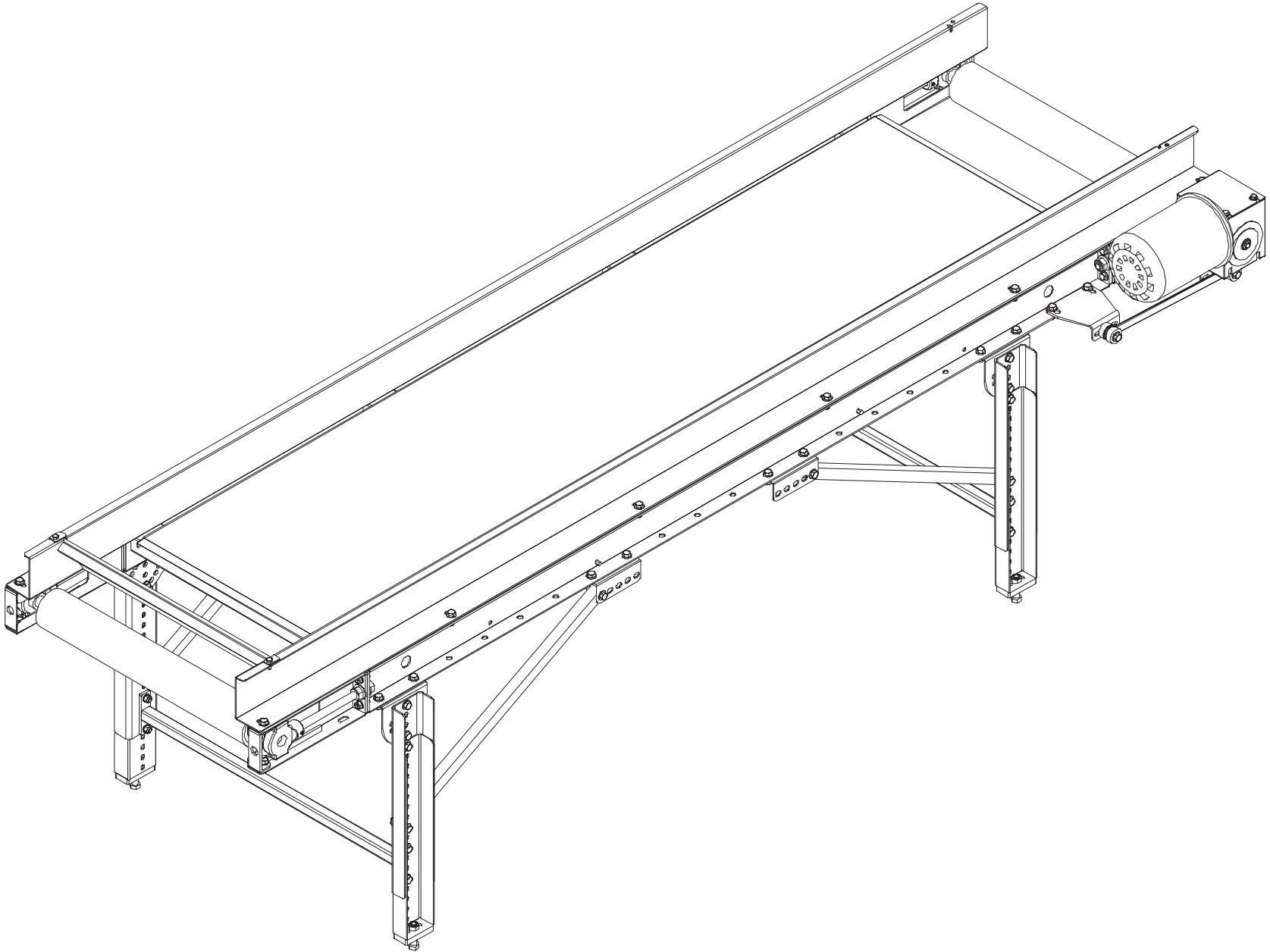


SECTION VIII. PARTS LISTS AND 3-D DRAWINGS

RM CONVEYOR - ASSEMBLED VIEW

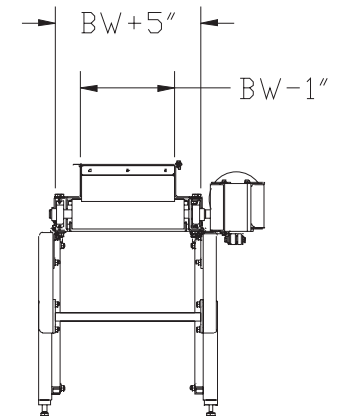
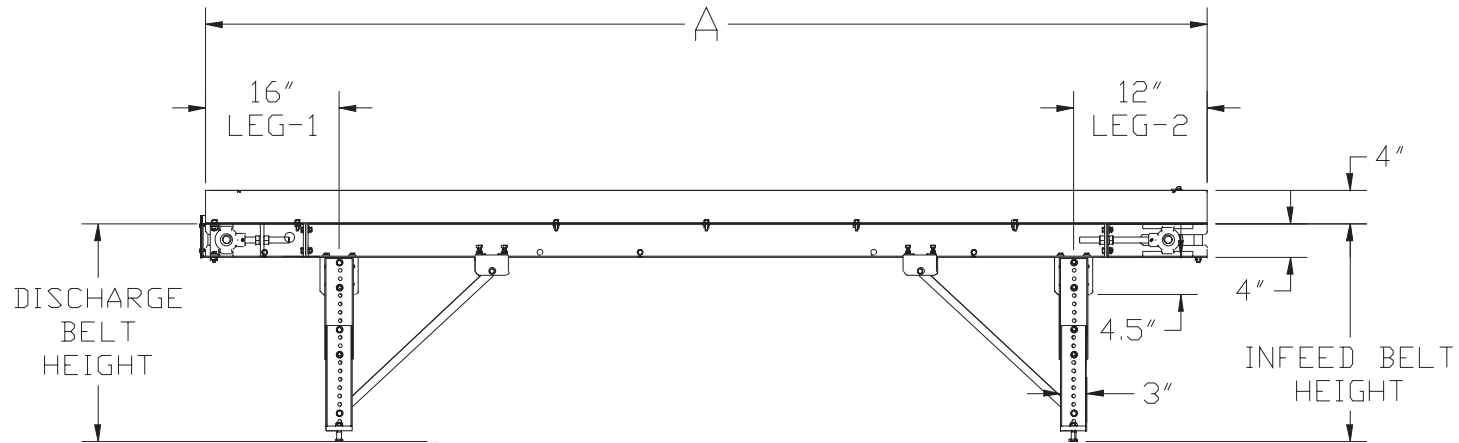
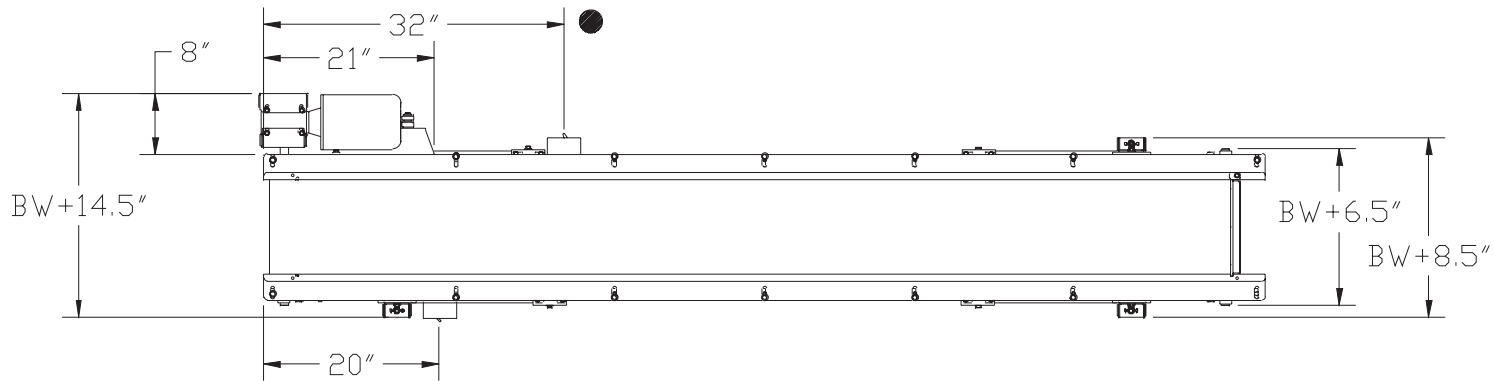


SECTION VIII. PARTS LISTS AND 3-D DRAWINGS

RM CONVEYOR - CATALOG VIEW

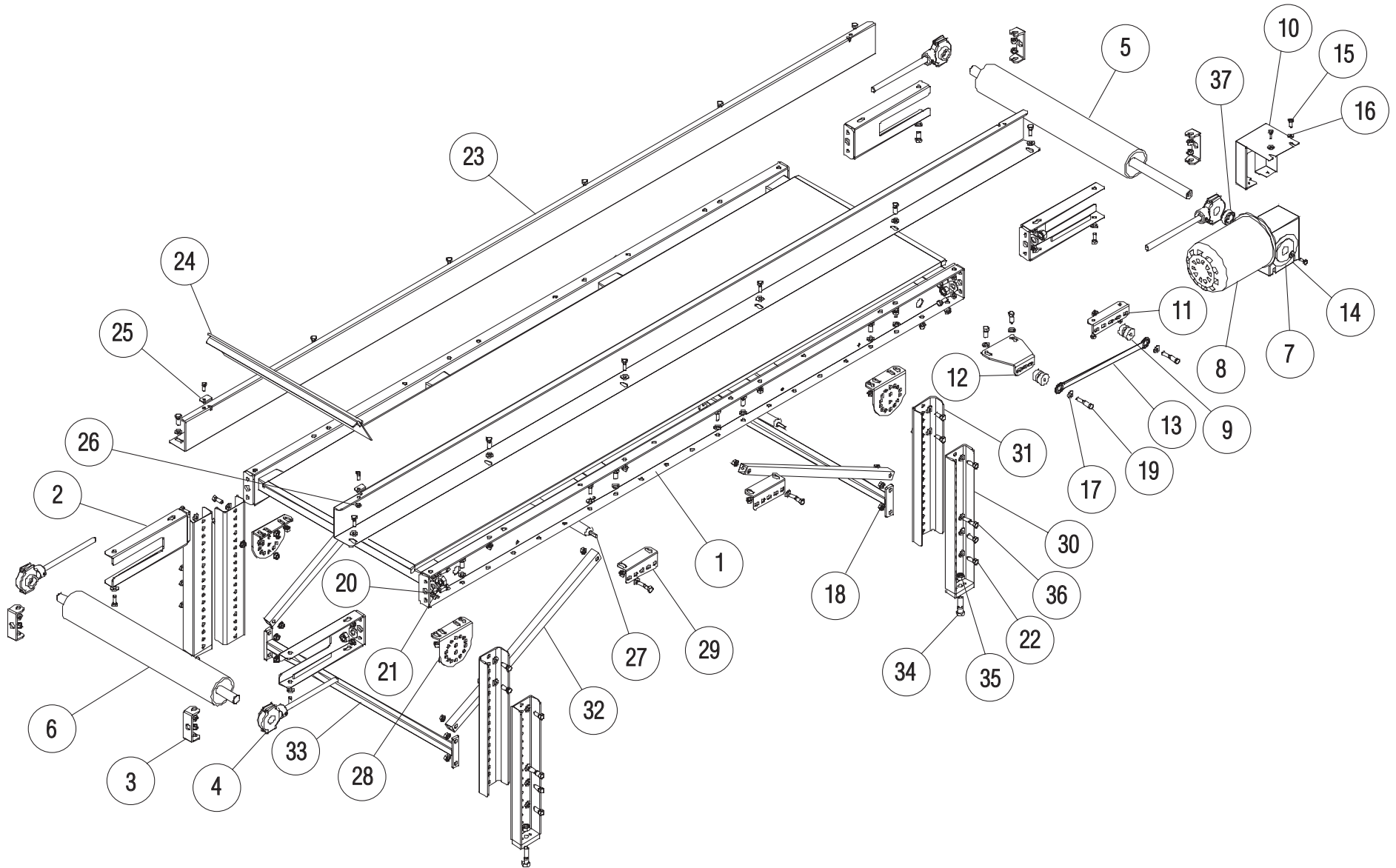
BW = Belt width

- Standard starter position (specify if other location).



SECTION VIII. PARTS LISTS AND 3-D DRAWINGS

RM CONVEYOR - EXPLODED VIEW



SECTION VIII. PARTS LISTS AND 3-D DRAWINGS

RM (DV) CONVEYOR PARTS LIST

ITEM	QTY	PART DESCRIPTION	ITEM	QTY	PART DESCRIPTION
1	1	FRAME ASSY	20	8	5/8 FLAT WASHER
2	4	TAIL/DRIVE ASSY	21	8	5/8-11 HEX NUT
3	4	END BRACKET	22	62	3/8-16x1 HEX BOLT
4	4	TAKE-UP ASSY	23	2	SIDE RAIL
5	1	DRIVE PULLEY	24	1	FLAPPER ASSY
6	1	TAIL PULLEY	25	2	FLAPPER CLIP
7	1	REDUCER	26	2	1/4-20 HEX FLANGE NUT
8	1	MOTOR	27	2	RETURN IDLER
9	2	UNIVERSAL MOUNT	28	4	LEG MOUNTING BRACKET
10	1	SHAFT GUARD	29	4	KNEE BRACE BRACKET
11	1	REACTION ROD BRACKET	30	4	LEG
12	1	REACTION ROD BRACKET	31	4	LEG EXTENSION
13	1	REACTION ROD	32	4	KNEE BRACE
14	1	1/4" FLAT FENDER WASHER	33	2	CROSS BRACE
15	7	1/4-20x3/4 HEX BOLT	34	4	1/2-13x2 HEX BOLT
16	2	1/4" FLAT WASHER	35	4	1/2-13 HEX NUT
17	74	1/8" FLAT WASHER	36	8	3/8-16x1-3/4 HEX BOLT
18	72	3/8-16 HEX FLANGE NUT	37	1	SHAFT COLLAR
19	2	3/8-16x2 HEX BOLT			