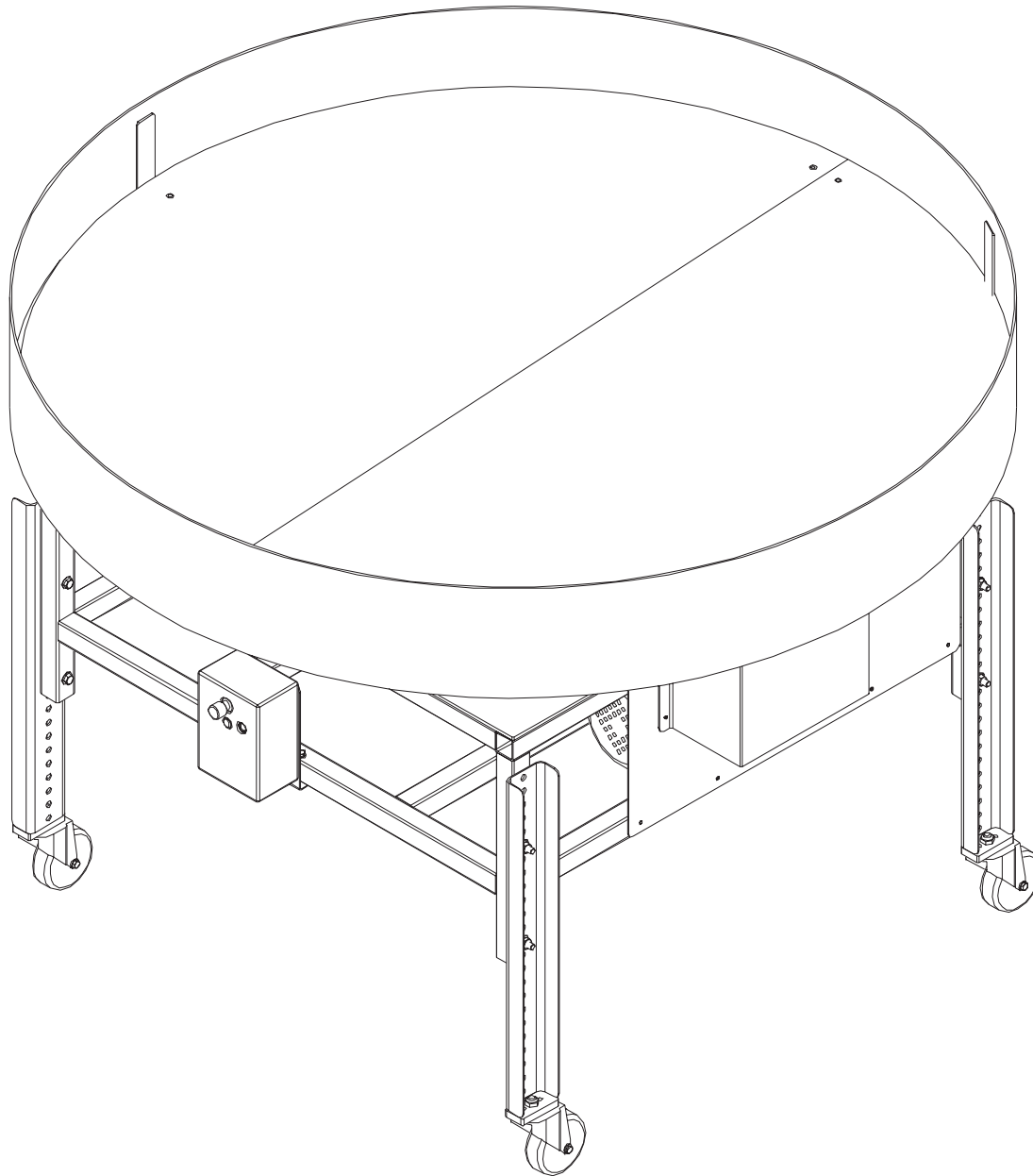


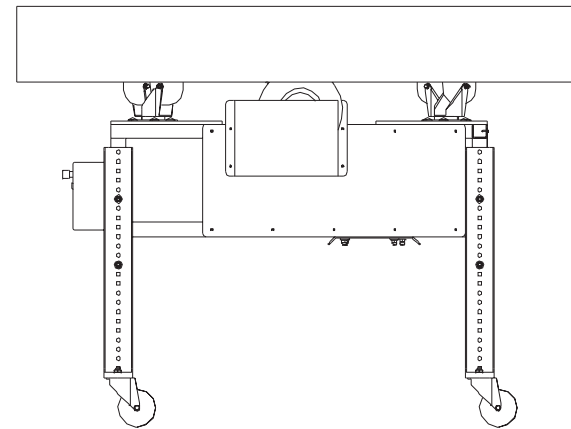
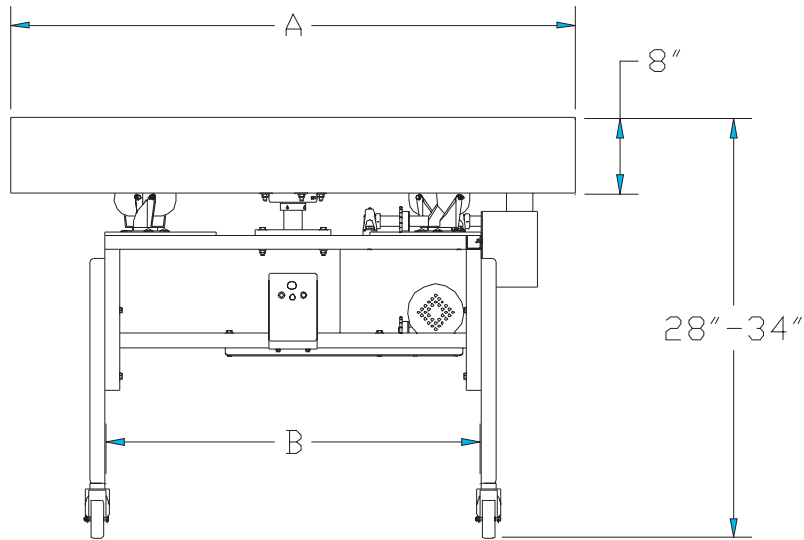
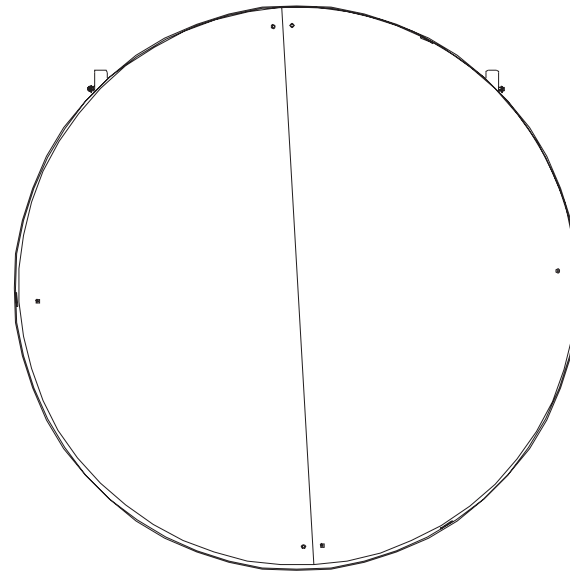
SECTION VIII. PARTS LISTS AND 3-D DRAWINGS

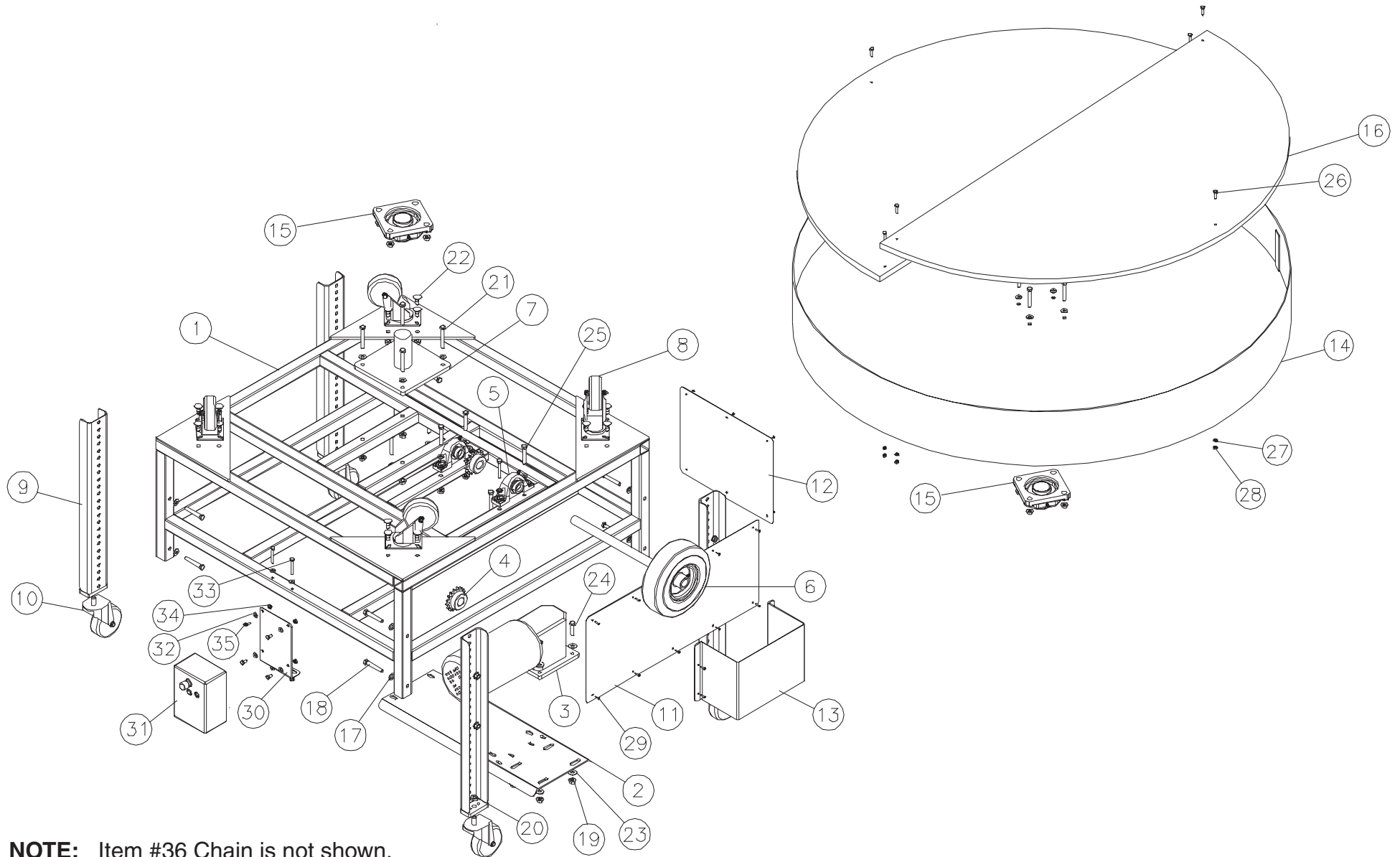
TURN TABLE CONVEYOR - ASSEMBLED VIEW



SECTION VIII. PARTS LISTS AND 3-D DRAWINGS

TURN TABLE CONVEYOR - CATALOG VIEW



SECTION VIII. PARTS LISTS AND 3-D DRAWINGS**TURN TABLE CONVEYOR - EXPLODED VIEW**

NOTE: Item #36 Chain is not shown.

TURN-TABLE PARTS LIST

ITEM	QTY	PART DESCRIPTION	EMI P/N
1	1	FRAME ASSY	*See Next Pg.
2	1	MOTOR SUPPORT	*See Next Pg.
3	1	MOTOR AND REDUCER	CP-1362A
4	2	SPROCKET	CP-1294
5	2	PILLOW BLOCK BEARING	CP-828
6	1	DRIVE SHAFT ASSY	*See Next Pg.
7	1	CENTER SHAFT ASSY	2H-221-1
8	4	CASTOR	CP-1451
9	4	LEG	2E-236-5
10	4	CASTOR	CP-1239
11	1	SIDE COVER (4-5-6')	2H-67-8
12	1	SIDE COVER (4-5-6')	2H-67-9
13	1	WHEEL GUARD COVER	2H-08-6
14	1	TABLE ASSY	*See Next Pg.
15	1	FLANGE BEARING	CP-827
16	2	PLYWOOD HALF CIRCLE	*See Next Pg.
17	24	3/8 WASHER	CP-662
18	16	3/8-24 X 2-1/2 HEX BOLT	CP-131

ITEM	QTY	PART DESCRIPTION	EMI P/N
19	20	3/8-24 HEX NUT	CP-521
20	4	1/2-13 HEX JAM NUT	CP-508
21	4	3/8-24x2-1/2 HEX BOLT	CP-131
22	16	5/16-18 X 3/4 CARRIAGE BOLT	CP-455
23	4	3/8 X 1-1/4 OD WASHER	CP-671
24	4	3/8-24 X 1-1/2 HEX BOLT	CP-137
25	4	3/8-24 X 2-1/2 HEX BOLT	CP-131
26	6	1/4-28 X 1 HEX BOLT	CP-135
27	6	1/4 LOCK WASHER	CP-702
28	6	1/4-28 HEX NUT	CP-517
29	20	8 X 1/2 SLTD PNHD SHEET METAL SCREW	CP-400
30	1	CONTROL MOUNTING PLATE	3E-27-81
31	1	KB CONTROL	EL-869
32	6	1/4 WASHER	CP-654
33	2	1/4-20 x 2 HEX BOLT	CP-121
34	2	1/4-20 HEX NUT	CP-524
35	4	1/4-28 X 3/4 HEX BOLT	CP-125
36	1	CHAIN (NOT SHOWN)	See BOM

Part numbers listed in this document are for reference only. When buying replacement parts please provide your conveyor model & serial number to ensure the correct part.

TURN-TABLE PARTS LIST - ADDITIONAL ITEMS

Item #1:

3'	2H-206-6
4'	2H-206-5
5'	2H-206-2
6'	2H-206-2

Item #2:

3'	4E-29-23-12
4'	4E-29-23-12
5'	4E-29-23-12
6'	4E-29-23-12

Item #6:

3'	2H-221-3
4'	2H-221-3
5'	2H-221-2
6'	2H-221-2

Item #14:

3'	2H-245-5
4'	2H-245-4
5'	2H-245-2
6'	2H-245-3

Item #16:

3'	2H-29-37
4'	2H-29-30
5'	2H-29-8
6'	2H-29-13

Foam Pad:

3'	2H-67-23
4'	2H-67-21
5'	2H-67-6
6'	2H-67-13

Rail Lining:

3'	2H-67-24
4'	2H-67-19
5'	2H-67-10
6'	2H-67-11

Trimloc:

3'	2H-08-7
4'	2H-08-5
5'	2H-08-2
6'	2H-08-3

Belt:

3'	2H-67-22
4'	2H-67-20
5'	2H-67-7
6'	2H-67-12