

SPECIFICATIONS	GT-NB10LLW-10SM	GT-NB20LW-10SM	GT-NB30LW-10SM
TOTAL WEIGHT	590g	785g	1315g
MAIN BODY WEIGHT	215g	370g	685g
AIR CONSUMPTION	118 cm ³ / stroke	232 cm ³ / stroke	587 cm ³ / stroke
AIR HOSE BORE Dia.	φ 4 mm	φ 4 mm	φ 4 mm
AIR PRESSURE	0.5 ~ 0.6 MPa	0.5 ~ 0.6 MPa	0.5 ~ 0.6 MPa
APPLIED PRESSURE	588N	1372N	2744N
SLIDE STROKE	0 ~ 10 mm	0 ~ 10 mm	0 ~ 10 mm

DIMENSIONS	GT-NB10LLW-10SM	GT-NB20LW-10SM	GT-NB30LW-10SM
A	141	157	200
B	89.5	98.5	114
C	7	9	15
D	26	26	36
E	R14	R14	R14
F	64	73	84
G	52	57	68
H	26	35	42
I	35	35	33
J	10	10	12
K	6.5	6.5	6.5

■ FEATURES AND APPLICATION

- This air nipper is designed to be mounted to a robot or special device to degating. Nipper by delaying air timing into two ports serves these functions of :
 - Blade edges to be close contact with the article(SLIDE PORT),
 - Close the blade and cut off the article (BLADE PORT),
- Slide direction can be selected Pull direction or Push direction due to your working.
- Slide stroke can be adjusted by Stopper Bolt Adjustment between 0 – 10mm .

4. HOW TO CHANGE BLADES

☆GT-NB10LLW-10SM

- Close air valve or disconnects the air hose to stop airflow.
- Pull blade pin and hex. U-nut by spanner and pick up the blade, so you can easily change the blade.
- Insert new blade and blade pin to main body and fix it by hex U-nut.

☆GT-NB20/30LW-10SM

- Close air valve or disconnects the air hose to stop airflow.
- Pull one Snap pin mounted on both side of blade pin by pliers etc.
- Pull out the blade pin completely from main body with the direction snap pin mounted on blade pin.
- Pick up the blade, so you can easily change the blade.
- Insert new blade and blade pin to main body and put in

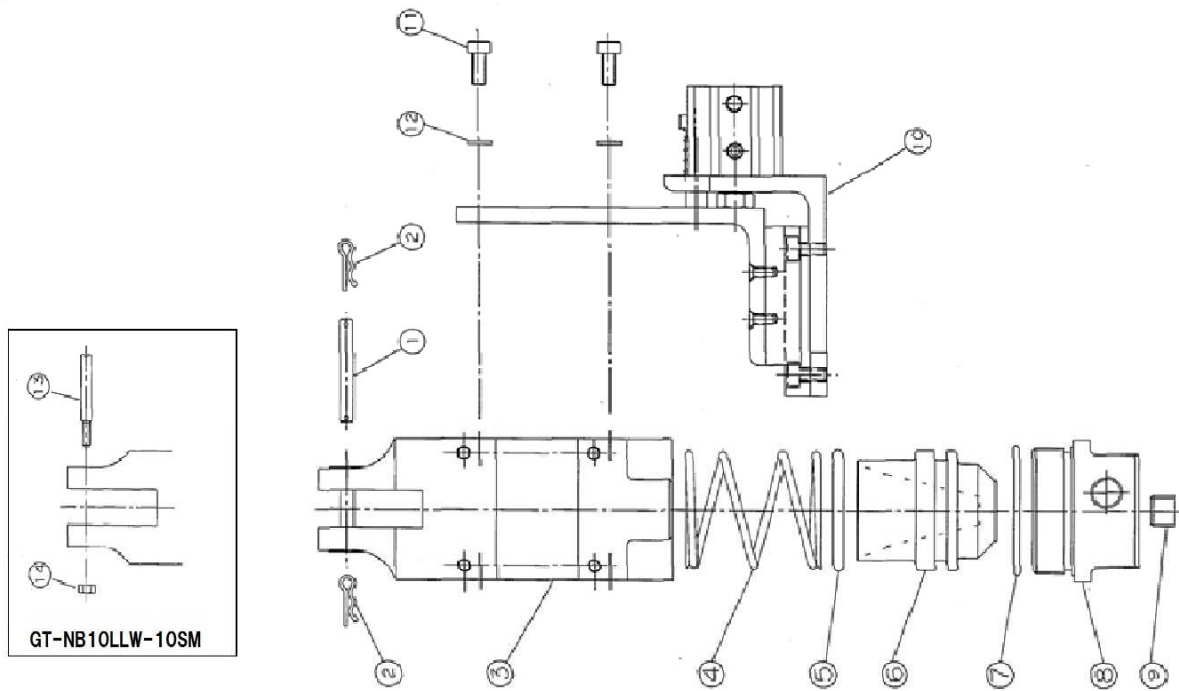
■ MAINTENANCE

- Never try to close the blade without applying any actual cutting material, as it will shorten the blade life.
- For your safety, when replacing a blade, always stop the air inlet to the air nipper from any ports or disconnect the air hose.
- Place a few drops of oil to the moving parts 2-3 times a day in order to maintain longer blade life.

■ AIR SUPPLY

- More than 0.75KW air compressor is required to operate the air nipper. Since air from air compressor contains much moisture and dust, it is desirable to provide a FILTER and LUBRICATOR in the pipe line to remove such undesirable elements. Also drain the water from air tank everyday. These maintenance procedures will avoid problems in short time of usage.
- Please pay careful attention to the dust inside of air hose or pipe line. When using brand new tool or air hose, blow and clean the inside of air hose or pipe before installation. Dust stuck inside air hose will restrict air flow during long time use. Regular maintenance checks are the secret of the long life of tool.
- This air nipper is designed to work with pressure at 0.5~0.6Mpa right before the tool. Excessive higher air pressure can cause broken blade, shorter life and other problems. Low air pressure will result in ineffective performance or non-cutting. Please operate air nippers within the specified air pressure.

GT-NB10L/20/30LW(10SM) – Exploded diagram drawing & Parts list



Index No.	Description	Number Required	Size		
			GT-NB10LLW-10SM	GT-NB20LW-10SM	GT-NB30LW-10SM
1	Pin, Blade	1	※		
2	Snap Pin	2	※	SSP-4	SSP-5
3	Frame	1			
4	Spring, Return	1			
5	O-Ring, Piston	1	P24	P32	P42
6	Piston	1			
7	O-Ring, Endcap	1	N30	N38	N48
8	Endcap	1			
9	Tapered Hex Cap Screw	1	Rc 1/8	Rc 1/8	Rc 1/8
10	Slide Bracket CP	1			
11	Hex Cap Bolt	4	M4	M4	M5
12	Washer, Spring	4			
13	Pin, Blade	1		※	※
14	Hex U Nut	1	M3	※	※

VESSEL CO.,INC.

17-25 FUKAEKITA 2-CHOME,
HIGASHINARI-KU, OSAKA JAPAN 537-0001

TEL: +81 6 6976 7778 FAX: +81 6 6972 9441
E-MAIL: export@vessel.co.jp

CERTIFICATE OF INSPECTION

SERIAL NO.

We hereby certify that before shipment, above tool has been carefully inspected according to our factory engineering standard and the result has come out in satisfactory data. In order to maintain the best conditions of this tool, please be sure to take a few minutes to read through the instruction manuals and operate as recommended.

DATE: _____ CHIEF INSPECTOR:

Y.Morishita

MANUFACTURED BY VESSEL CO., INC. OSAKA JAPAN