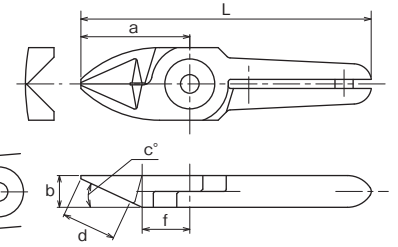


No. AS/HS Standard



AS/Standard type. Basic set of blades used for cutting copper wire and steel wire.
HS/Improved durability with brazed high-speed steel.



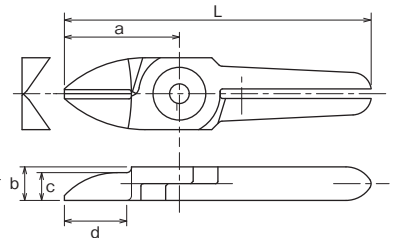
Model No.	Size (mm)							Weight (g)	Material	Applicable models	EDP No.
	a	b	c (°)	d: Effective Length	e: Blade opening	f	L				
N3AS	24	7	25	12	4	10.5	64	35	Special alloy steel	GT-NS3 / N3 / NR3	360102
N3HS	24	7	25	12	4	10.5	64	35	w/High speed steel chip	GT-NS3 / N3 / NR3	360101
N5AS	24	7	25	12	4	10.5	64	40	Special alloy steel	GT-NS5 / N5 / NR5	360112
N5HS	24	7	25	12	4	10.5	64	40	w/High speed steel chip	GT-NS5 / N5 / NR5	360111
N7AS	27	9	30	13.5	4	12.5	81	80	Special alloy steel	GT-NS7 / N7 / NR7	360122
N7HS	27	9	30	13.5	4	12.5	81	80	w/High speed steel chip	GT-NS7 / N7 / NR7	360121
N10AS	27	9	30	13.5	5	12.5	91	85	Special alloy steel	GT-N10	360132
N10HS	27	9	30	13.5	5	12.5	91	85	w/High speed steel chip	GT-N10	360131
N10LAS	35	12	30	20	5	15	89	120	Special alloy steel	GT-NS10L / NR10L	360181
N12AS	35	12	30	20	5	15	105	135	Special alloy steel	GT-N12	360142
N12HS	35	12	30	20	5	15	105	135	w/High speed steel chip	GT-N12	360141
N20AS	35	12	30	20	9	15	95	140	Special alloy steel	GT-NS20 / N20 / NR20 / NB20	360151
N30AS	43	17	30	25	9	18	127	370	Special alloy steel	GT-NS30 / N30 / NR30 / NB30	360161

>> For guidance on cutting capability, see P30 of the technical material.

No. BJ Straight blades for metals



BJ/This is a set of vertical blades with an unbeveled cutting edge for metal.



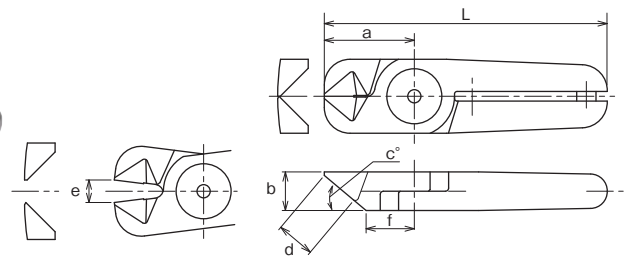
Model No.	Size (mm)							Weight (g)	Material	Applicable models	EDP No.
	a	b	c	d: Effective Length	e: Blade opening	L					
NW1BJ	20	5	3	10.5	3.5	50	16	Special alloy steel	GT-NWR1 / NWS1	360450	
N3BJ	24	7	5.8	13	5	64	35	Special alloy steel	GT-NS3 / N3 / NR3	360106	
N5BJ	24	7	5.8	13	4	64	40	Special alloy steel	GT-NS5 / N5 / NR5	360119	
N7BJ	27	9	7.5	13	5	81	75	Special alloy steel	GT-NS7 / N7 / NR7	360128	
NW10BJ	30	9	6	14	5	85	76	Special alloy steel	GT-NWR10 / NWS10	360453	
NW20BJ	40	12	6	21.5	8	100	142	Special alloy steel	GT-NWR20 / NWS20	360459	
NW30BJ	55	17	8	29.5	11	140	367	Special alloy steel	GT-NWR300 / NWS30	360460	

>> For guidance on cutting capability, see P30 of the technical material.

No. AG Powerful cutting blades



AG/This is a set of blades with increased strength with a shorter cutting edge than the standard type. More welding pressure is created because it cuts at the base of the blades.



Model No.	Size (mm)							Weight (g)	Material	Applicable models	EDP No.
	a	b	c (°)	d: Effective Length	e: Blade opening	f	L				
N20AG	28	12	40	12	7	15	88	135	Special alloy steel	GT-NS20 / N20 / NR20 / NB20	360159
N20HS	26	12	40	10	7	13.5	86	135	w/High speed steel chip	GT-NS20 / N20 / NR20 / NB20	360157

>> For guidance on cutting capability, see P231 of the technical material.

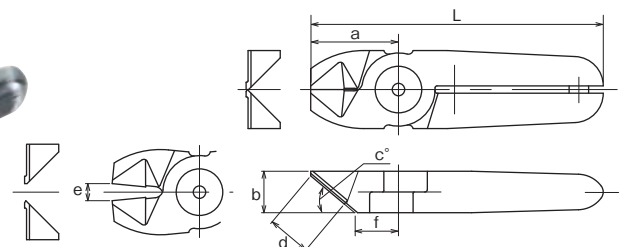
No. BBB Powerful cutting blades with carbide tips



BBB/With carbide tips suitable for cutting hard wires such as high steel wire and piano wire.



Carbide tips
 Recommended to the applications where more durable blade than the special alloy steel is required (i.e. when cutting piano wires)



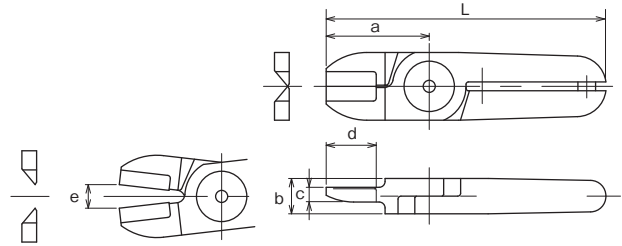
Model No.	Size (mm)							Weight (g)	Material	Applicable models	EDP No.
	a	b	c (°)	d: Effective Length	e: Blade opening	f	L				
N30BBB	36	17	40	18	7	18	120	365	w/Carbide chip	GT-NS30 / N30 / NR30 / NB30	360172
N50BBB	46	25	35	19	9	24	166	955	w/Carbide chip	GT-N50 / NR50	360177

>> For guidance on cutting capability, see P30 of the technical material.

Air nipper standard blades for metal

No. BFB/AS Clipper blades with carbide tips

Metal BFB/With carbide tips, suitable for cutting metal wire and thin pipe.
AS/Standard clipper type blades.

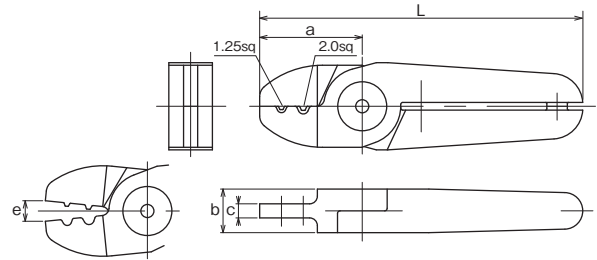


Model No.	Size (mm)						Weight (g)	Material	Applicable models	EDP No.
	a	b	c	d: Effective Length	e: Blade opening	L				
N20BFB	35	12	5	17	8	95	150	w/Carbide chip	GT-NS20 / N20 / NR20 / NB20	360156
N50AS	60	25	10	30	11	180	950	Special alloy steel	GT-N50 / NR50	360175

>> For guidance on cutting capability, see P30 of the technical material.

No. ACD Crimp edge for solderless terminals

Metal ACD/This is a set of blades for crimping solderless terminals.
(Bare terminal 1.25sq/2.0sq)



Model No.	Size (mm)					Weight (g)	Material	Applicable models	EDP No.
	a	b	c	d: Blade opening	L				
N30ACD	40	17	5.5	8	126	335	Special alloy steel	GT-NS30 / N30 / NR30 / NB30	360171

>> For guidance on cutting capability, see P30 of the technical material.

Air nipper standard blades for plastic

No. NM NM Blades

PAT.

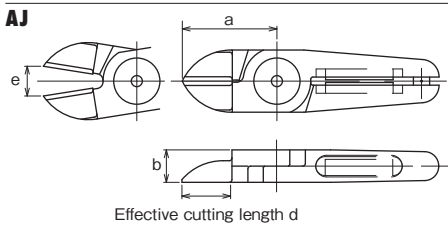


NM blades eliminate troubles caused by spring breakage. Can be mounted on the VESSEL current air nippers. Periodic replacement of spring is no more necessary as the magnet works semi-permanently.

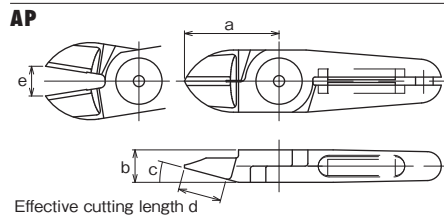


- Ideal for around-the-clock operations
- Semi-permanent magnetic force
- Compatible with our standard nipper bodies

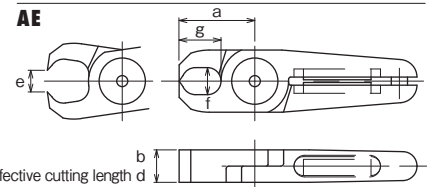
Thin, straight type / For plastic parts



For plastic parts



Nipping type / For plastic parts

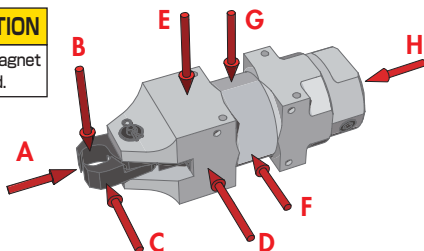


Model No.	Size (mm)							Weight (g)	Applicable models	EDP No.
	a	b	c (°)	d	e	f×g				
NM20AJ	35	12	-	18	11	-	116	GT-NS20 / N20 / NR20 / NB20	360246	
NM20AP	35	12	15	16	11	-	124	GT-NS20 / N20 / NR20 / NB20	360247	
NM20AE	28	12	-	12	8	10×15.5	129	GT-NS20 / N20 / NR20 / NB20	360248	
NM30AJ	52	17	-	28	11	-	360	GT-NS30 / N30 / NR30 / NB30	360261	
NM30AP	66	17	15	38	16	-	380	GT-NS30 / N30 / NR30 / NB30	360262	
NM30AE	45	17	-	17	12	13×28	358	GT-NS30 / N30 / NR30 / NB30	360263	

>> For guidance on cutting capability, see P30 of the technical material.

*Customization also available upon request.

CAUTION
Powerful magnet is used.



Result of magnetic force measurement

If a magnetic sensor for operation check is installed nearby, please confirm the magnetic force level in the following diagram.

品番 No.	A	B	C	D	E	F	G	H	EDP No.
NM20AE	85	10	10	5	32	5	2	0	360248
NM30AE	34	8	8	6	42	15	30	3	360263

Measurement unit: Gauss
Measurement device: Gaussmeter GM-1200 manufactured by DENSHIJIKI INDUSTRY Co., Ltd.