

Two-Jaw Self-Centering Parallel Gripper – PQ

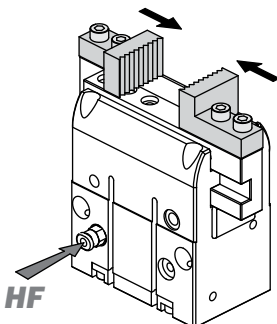
- Double acting, can be NO or NC.
- Can be setup as Normally Open or Normally Closed by swapping the jaw that each gripper finger is mounted to. See website for additional information.
- Robust guidance.
- Self-centering.
- Strokes from 8mm to 63mm.
- See Sensor Reference Guide on page 1010 for a complete list of compatible sensors.



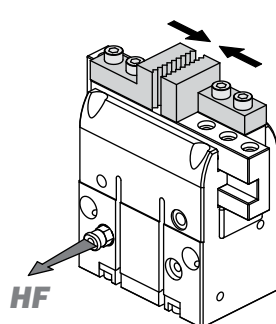
Quick#	7138	7139	7140	7141	7142	7143	7144	7145
Part#	PQ1608	PQ2012	PQ2516	PQ3015	PQ3523	PQ4533	PQ5047	PQ6063
Price	\$315.00	\$327.00	\$361.00	\$650.00	\$705.00	\$854.00	\$935.00	\$1,166.00
Medium	Filtered, lubricated / non-lubricated compressed air							
Operating pressure range	51–116 psi							
Total gripping force at 87 psi	27 lbf	40.4 lbf	64.4 lbf	90 lbf	126 lbf	206.8 lbf	301.2 lbf	418 lbf
Stroke (±0.5mm)	8mm	12mm	16mm	15mm	23mm	33mm	47mm	63mm
Maximum working frequency	2Hz	2Hz	2Hz	2Hz	2Hz	1Hz	1Hz	1Hz
Repetition accuracy	0.02mm							
Mid-stroke detection capability	Yes, see Sensor Reference Guide on page 1010 for details.							
Weight	63g	110g	200g	330g	610g	1270g	2430g	4900g

Use Quick#s for easy online ordering.

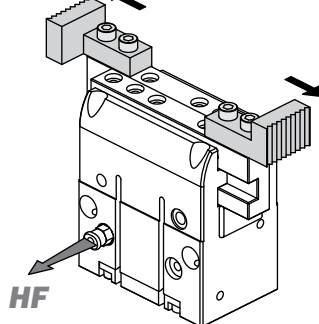
Normally open with outside gripping



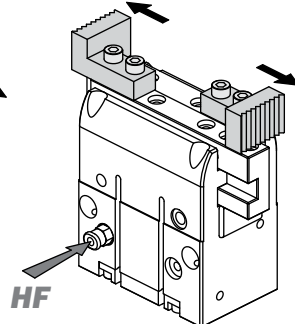
Normally closed with outside gripping



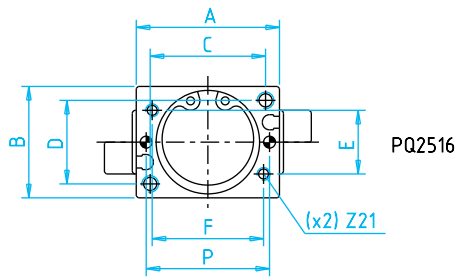
Normally open with inside gripping



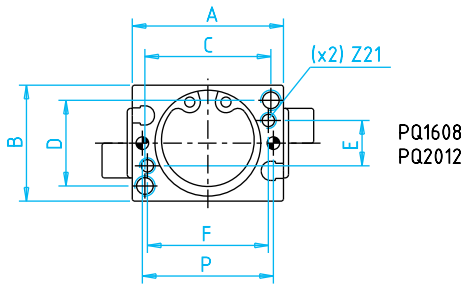
Normally closed with inside gripping



Two-Jaw Self-Centering Parallel Gripper – PQ

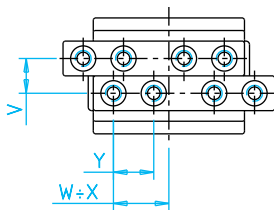
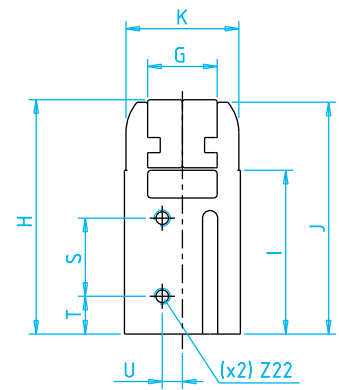
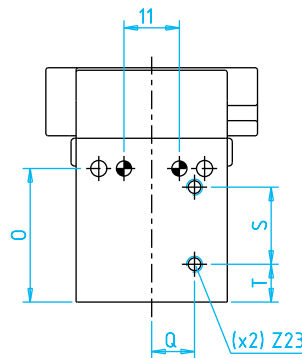
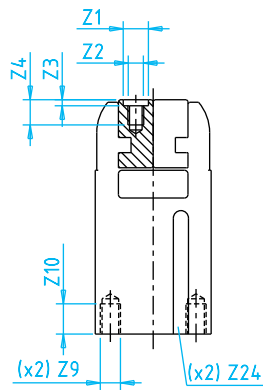
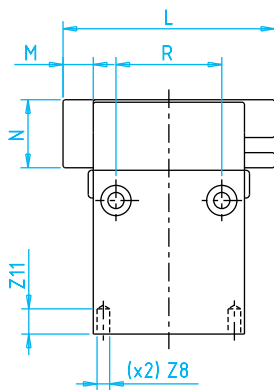
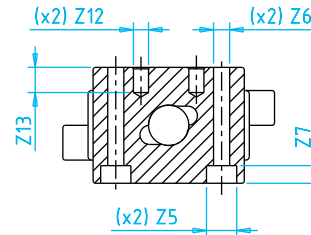


PQ2516



PQ1608
PQ2012

- Z1 - Spot face for the centering sleeve of the gripping tool
- Z2 - Threaded hole for the gripping tool fastening
- Z6 - Through hole for the gripper side fastening
- Z9 - Threaded hole for the gripper fastening on the bottom
- Z12 - Spot face for the centering sleeve of the gripper body
- Z15 - Through hole for the gripper fastening on the bottom
- Z17 - Main port for air fittings
- Z21 - Ports for direct air supply from the bottom
- Z22 - Air supply ports
- Z23 - Air supply ports
- Z24 - C-slot sensor slots

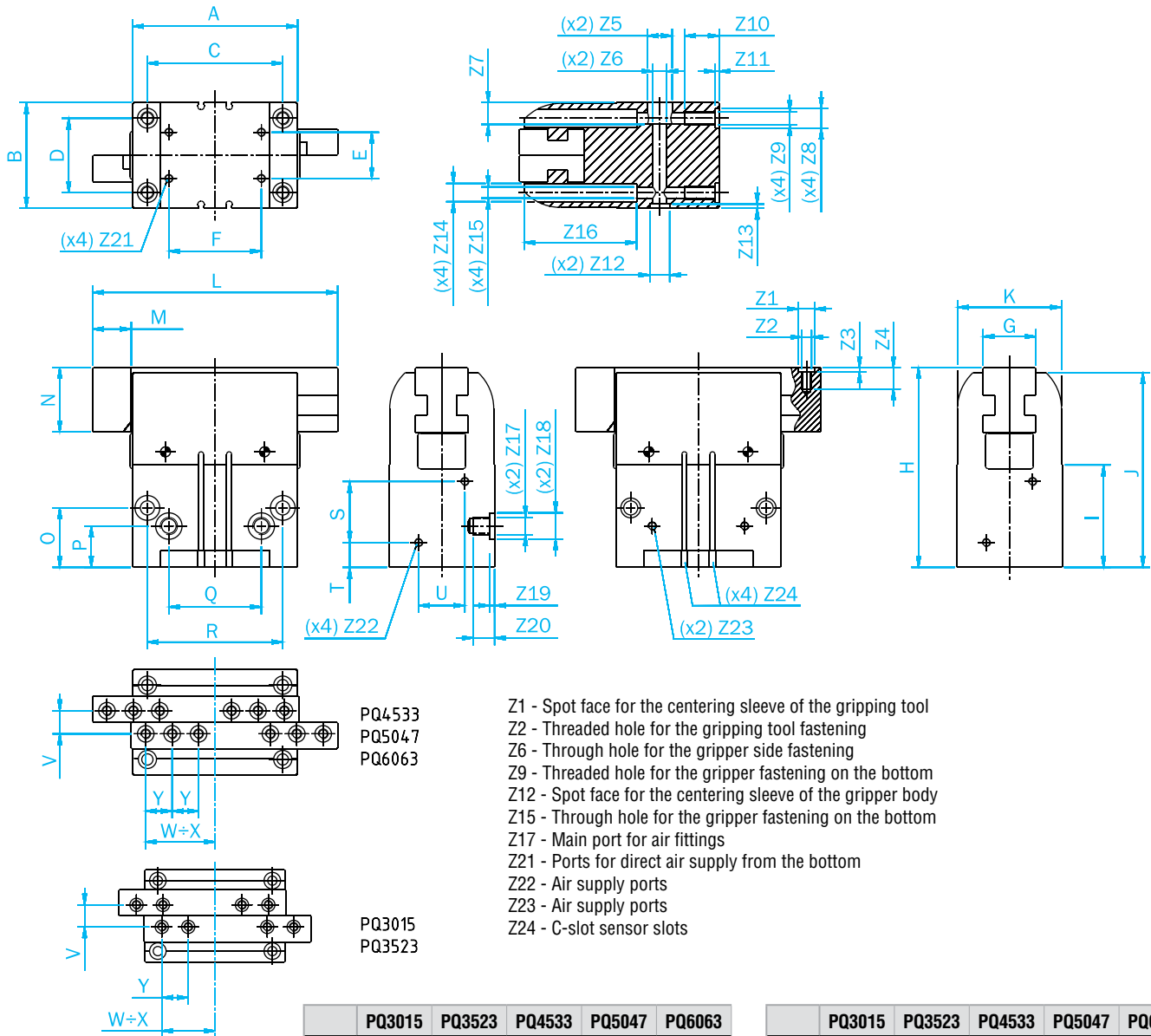


W ÷ X is the range of distance from centerline (min to max). Minimum is the X dimension (fully closed), Maximum is the W dimension (fully open).

	PQ1608	PQ2012	PQ2516
A	24	30	36
B	18	23	28
C	20	25	29
D	14	17	21
E	7	9	16
F	19.4	24	28
G	11	13.8	16
H	44	46.5	57
I	32.5	32.5	37.5
J	43.5	46	56
K	17.5	22.4	27
L	32	42	52
M	4	6	8
N	11	13.5	18
O	26	26.5	28.5
P	21	26	31
Q	7.5	8.5	11
R	17	21	24
S	13.5	15.3	16
T	7	7.5	8
U	3.7	4	8
V	5.5	6.9	8
W	13	17	21
X	9	11	13
Y	6	8	9

	PQ1608	PQ2012	PQ2516
Z1	5	5	6
Z2	M3	M3	M4
Z3	1.2	1.2	2.5
Z4	4	5	7.5
Z5	Ø5	Ø6	Ø6
Z6	Ø2.6	Ø3.2	Ø3.2
Z7	3	3.5	3.5
Z8	Ø2H7	Ø2.5H7	Ø3H7
Z9	M3	M4	M4
Z10	5	6	6
Z11	3	5	5
Z12	Ø2.5H7	Ø3H7	Ø3H7
Z13	3	5	5
Z14	M2.5	M3	M3
Z15	M3	M3	M5
Z16	M2.5	M3	M3
Z17	M5	M5	M5
Z18	-	-	-
Z19	-	-	-
Z20	5	5	5
Z21	M3	M4	M3
Z22	-	-	-
Z23	M5	M5	M5

Two-Jaw Self-Centering Parallel Gripper – PQ



- Z1 - Spot face for the centering sleeve of the gripping tool
- Z2 - Threaded hole for the gripping tool fastening
- Z6 - Through hole for the gripper side fastening
- Z9 - Threaded hole for the gripper fastening on the bottom
- Z12 - Spot face for the centering sleeve of the gripper body
- Z15 - Through hole for the gripper fastening on the bottom
- Z17 - Main port for air fittings
- Z21 - Ports for direct air supply from the bottom
- Z22 - Air supply ports
- Z23 - Air supply ports
- Z24 - C-slot sensor slots

	PQ3015	PQ3523	PQ4533	PQ5047	PQ6063
A	50	64	80	100	125
B	38	42	50	64	80
C	42	52	66	82	100
D	27	32	38	45	56
E	20	18	26	28	34
F	28	36	44	56	70
G	20	24	28	32	42
H	55	70	93	121	156
I	30	38	45	62	85
J	53	68	90	118	153
K	37.6	41.6	49	63	79
L	65.5	87.5	118.5	148.5	191.5
M	7.5	11.5	16.5	23.5	31.5
N	18	22	33	39	45
O	25	22	34	36	55
P	17	25	24	25	40
Q	28	35	44	56	70
R	42	52	66	82	100
S	-	-	-	37	44
T	-	-	-	15	24
U	-	-	-	28	34
V	8	10	12	14	16
W	24.8	35.7	52.2	65.6	79.8
X	17.3	24.2	35.7	42	48.3
Y	10	12	14	16	20

	PQ3015	PQ3523	PQ4533	PQ5047	PQ6063
Z1	Ø5 H8	Ø6 H8	Ø8 H8	Ø10 H8	Ø12 H8
Z2	M3	M4	M5	M6	M6
Z3	1.2	2.5	2.5	2.5	2.5
Z4	7.2	9.5	11.5	13	12.5
Z5	Ø6	Ø9	Ø11	Ø15	Ø15
Z6	Ø3.5	Ø5.2	Ø6.6	Ø8.5	Ø8.5
Z7	10	10	9	13.2	17
Z8	Ø6 H8	Ø8 H8	Ø10 H8	Ø12 H8	Ø12 H8
Z9	M4	M5	M6	M8	M8
Z10	10.5	14	18	21	22.5
Z11	2.5	2.5	2.5	2.5	2.5
Z12	Ø6 H8	Ø8 H8	Ø10 H8	Ø12 H8	Ø12 H8
Z13	2.5	2.5	2.5	2.5	2.5
Z14	Ø6	Ø7.5	Ø9	Ø11	Ø11
Z15	Ø3.3	Ø4.2	Ø5	Ø6.8	Ø6.8
Z16	22	38	45	68	82
Z17	M5	M5	M5	G1/8	G1/8
Z18	-	-	Ø10	Ø16	Ø18
Z19	-	-	2.5	3	3
Z20	5	5	9.3	13	16.3
Z21	M3	M4	M5	M5	M5
Z22	-	-	-	M5	M5
Z23	M5	M5	M5	M5	M5

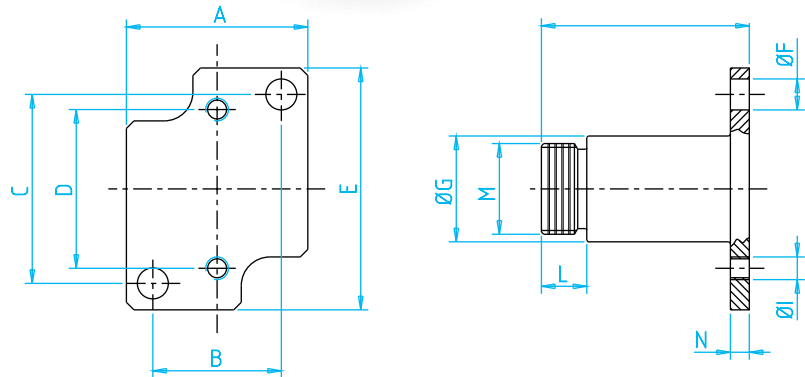
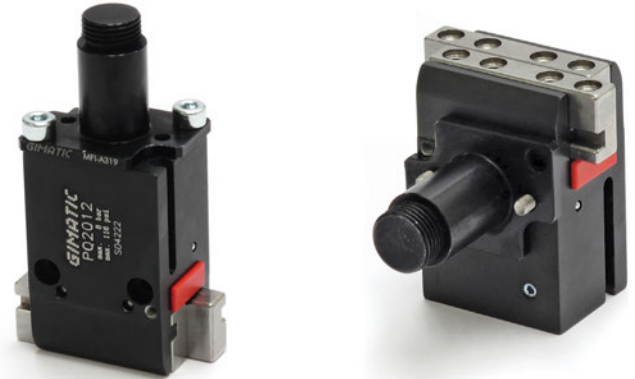
Two-Jaw Self-Centering Parallel Gripper – PQ

Mounting Brackets for PQ Grippers

Quick#	Part#	Price	Use with:	Wt.
7328	MFI-A318	\$28.00	PQ1608	11g
7329	MFI-A319	\$30.50	PQ2012	18g
7330	MFI-A320	\$27.60	PQ2516	20g


Includes Fasteners.

Quick#	7328	7329	7330
For:	PQ1608	PQ2012	PQ2516
A	19.5	24	28
B	14	17	21
C	20	25	29
D	17	21	24
E	25.5	32	36
F	Ø3.1	Ø4.2	Ø4.2
G	Ø10	Ø14	Ø14
H	22	27.5	29
I	M2.5	M3	M3
L	5	6	6
M	M8x1	M12x1	M12x1
N	3	2.5	4



Online product pages have all the information you need!

Product Detail



6327 Gimatric Parallel Gripper GS-20

A reliable, maintenance-free gripper with many different options for fastening. GS Grippers feature a patented backlash adjusting system. Great grip force, quality, price, and value! Once you try these grippers, you'll probably standardize on using these for all of your robotic/EOAT needs.

Custom 3D printed gripper fingers are available, Contact EOAT Engineering today!


Item #: GS 20
\$161.00 Each
 Quantity:

Available: In Stock
 CAD File Download
 Exploded View & Parts List
 Technical Specifications
 Additional Specifications
 360 Degree View

Overview | Technical Specifications | Dimensional Drawing | Sensor Options | Midstroke Sensor Detection













- 207g
- 10.4mm Stroke
- Double Acting
- MS Air port
- Finger blanks & Mounting brackets available
- Optional magnetic sensors available
- Mid-stroke detection capability with use of hall effect sensor or Gimatric PRO sensor
- Opening total gripping force at 87psi: 48lbf
- Closing total gripping force at 87psi: 42lbf

Related Items



- Application examples
- CAD file downloads
- Additional specifications
- Dimensional drawings
- Related items
- Replacement parts

Related Items

 1920 Aluminum Mounting Bracket for size 20 Grippers Item #: GMB G5GW 20 \$31.00 Each Qty: <input type="text"/> <input type="button" value="Add to Cart"/>	 5888 Aluminum Finger Blanks for GS-20 Why machine custom fingers from scratch? Start with these aluminum finger blanks. They are easy to shape to your part. Item #: GS 20 FBA \$27.20 Each Qty: <input type="text"/> <input type="button" value="Add to Cart"/>	 5889 Acetal Finger Blanks for GS-20 Why machine custom fingers from scratch? Start with these acetal finger blanks. They are easy to shape to your part. Item #: GS 20 FBP \$27.20 Each Qty: <input type="text"/> <input type="button" value="Add to Cart"/>	 102 Threaded Male MS Push-In Fitting for 4mm Tube Item #: GSF QMC M504 \$3.10 Each Qty: <input type="text"/> <input type="button" value="Add to Cart"/>
 104 Threaded Male MS Push-In Fitting for 6mm Tube Item #: GSF QMC M506 \$4.40 Each Qty: <input type="text"/> <input type="button" value="Add to Cart"/>	 118 Threaded Male MS Push-In Elbow Fitting for 4mm Tube Item #: GSF QME M504 \$3.30 Each Qty: <input type="text"/> <input type="button" value="Add to Cart"/>	 120 Threaded Male MS Push-In Elbow Fitting for 6mm Tube Item #: GSF QME M506 \$3.50 Each Qty: <input type="text"/> <input type="button" value="Add to Cart"/>	 7319 Mounting Bracket for Gimatric & SMC size 20 Item #: MFI A323 \$37.00 Each Qty: <input type="text"/> <input type="button" value="Add to Cart"/>
 960 4mm Blue Polyurethane Tubing - 25' Coil Item #: GSU PB 0424	 957 4mm Clear Polyurethane Tubing - 25' Coil Item #: GSU PB 0424	 966 4mm Red Polyurethane Tubing - 25' Coil Item #: GSU PB 0424	 961 6mm Blue Polyurethane Tubing - 25' Coil Item #: GSU PB 0604



Easy online ordering!

- Track Orders
- Create Supply Lists
- Order from History
- Export Purchase Orders