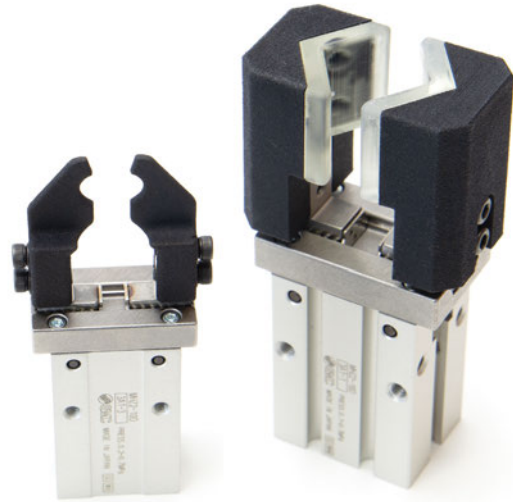


SMC Parallel Grippers – MHZ2

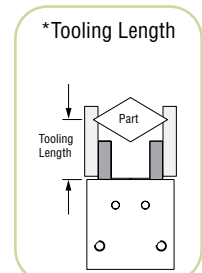
- Double acting (-_D), normally closed (-_C), or normally open (-_S) models.
- Additional narrow jaw models (_DN) available online.
- Bore sizes from 10mm to 40mm.
- Optional sensors available.
- Finger blanks available on page 637.
- Mounting brackets on page 628.
- MHF2 low-profile parallel grippers on page 668.



Contact EMI for custom designed and manufactured fingers.

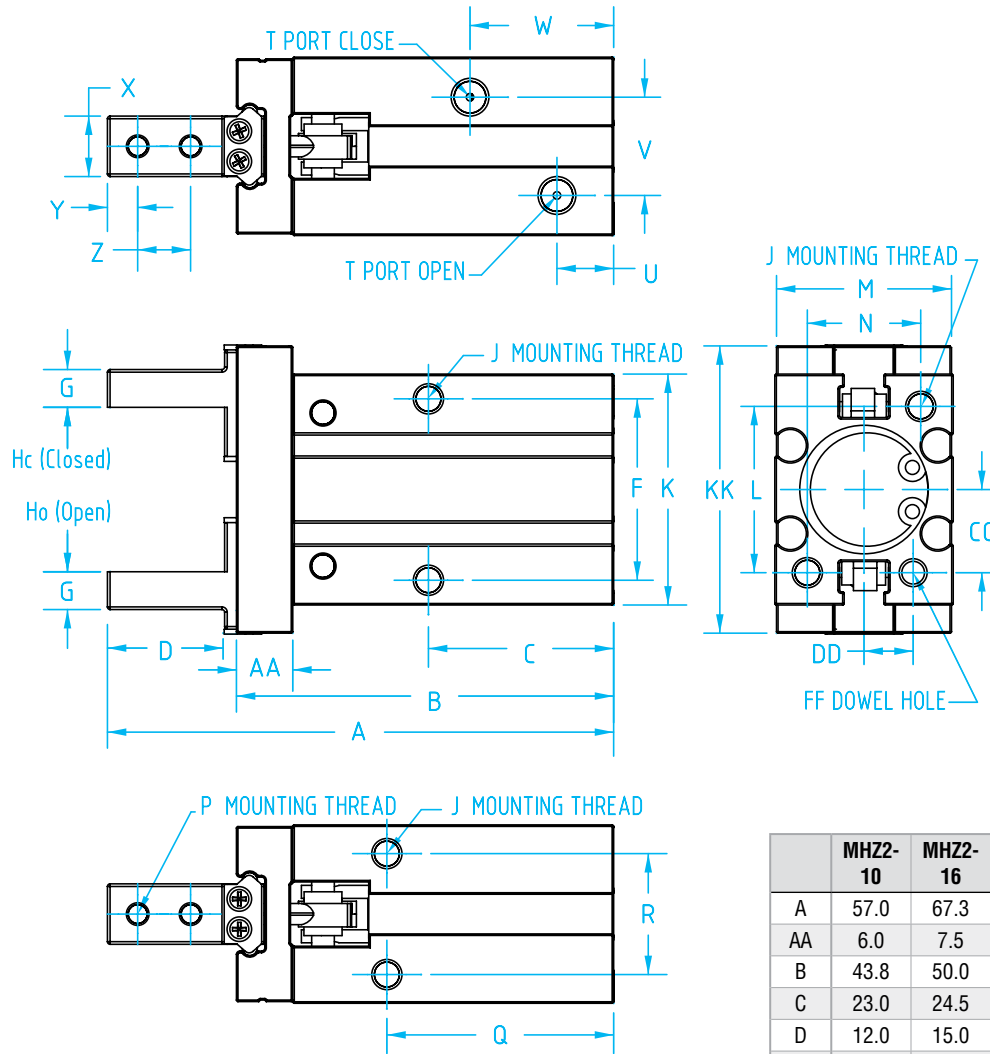


	Quick#	Part#	Price	Opening Force at 20mm*	Closing Force at 20mm*	Opening Force at 40mm*	Closing Force at 40mm*	Finger Stroke	Weight
Double Acting	2109	MHZ2-10D	\$191.30	8 lbf	5 lbf	6 lbf	3 lbf	4mm	55g
	2110	MHZ2-16D	\$196.75	22 lbf	17 lbf	15 lbf	10 lbf	6mm	115g
	2111	MHZ2-20D	\$279.80	33 lbf	22 lbf	32 lbf	21 lbf	10mm	235g
	2112	MHZ2-25D	\$334.45	54 lbf	36 lbf	52 lbf	34 lbf	14mm	430g
Normally Open	2117	MHZ2-10S	\$191.30	-	3 lbf	-	1 lbf	4mm	55g
	2118	MHZ2-16S	\$196.75	-	14 lbf	-	7 lbf	6mm	115g
	2119	MHZ2-20S	\$279.80	-	18 lbf	-	17 lbf	10mm	240g
	2120	MHZ2-25S	\$334.45	-	27 lbf	-	25 lbf	14mm	435g
Normally Closed	2121	MHZ2-10C	\$191.30	6 lbf	-	4 lbf	-	4mm	55g
	2122	MHZ2-16C	\$196.75	19 lbf	-	12 lbf	-	6mm	115g
	2123	MHZ2-20C	\$279.80	29 lbf	-	28 lbf	-	10mm	240g
	2124	MHZ2-25C	\$334.45	44 lbf	-	42 lbf	-	14mm	435g



Use Quick#s for easy online ordering.

SMC Parallel Grippers – MHZ2



	MHZ2-10	MHZ2-16	MHZ2-20	MHZ2-25
A	57.0	67.3	84.8	102.7
AA	6.0	7.5	9.5	11.0
B	43.8	50.0	62.3	74.6
C	23.0	24.5	29.0	30.0
D	12.0	15.0	20.0	25.0
F	16.0	24.0	30.0	36.0
FF	Ø2 H9	Ø3 H9	Ø4 H9	Ø4 H9
CC	7.6	11.0	16.8	21.8
DD	5.2	6.5	7.5	10.0
G	4.0	5.0	8.0	10.0
Ho	15.2	20.9	26.3	33.3
Hc	11.2	14.9	16.3	19.3
J	M3	M4	M5	M6
K	23.0	30.6	42.0	52.0
KK	29.0	38.0	50.0	63.0
L	18.0	22.0	32.0	40.0
M	16.4	23.6	27.6	33.6
N	12.0	15.0	18.0	22.0
P	M2.5	M3	M4	M5
Q	27.0	30.0	35.0	36.5
R	11.4	16.0	18.6	22.0
T	M3	M5	M5	M5
U	9.0	7.5	10.0	10.7
V	11.0	13.0	15.0	20.0
W	19.0	19.0	23.0	23.5
X	5.0	8.0	10.0	12.0
Y	3.0	4.0	5.0	6.0
Z	5.7	7.0	9.0	12.0

Quick#	Part#	Signal	Connection	Price
SMC 3-wire Straight T-Slot Sensors to detect fully open / fully closed				
2243	Y7PL-PNP	PNP	with lead, 3m long	\$44.00
2244	Y59AL-NPN	NPN	with lead, 3m long	\$34.95
SMC 3-wire Straight C-Slot Sensors for midstroke detection - Purchase Adaptor Separately				
5430	D-M9PL	PNP	with lead, 3m long	\$33.70
2412	D-M9NL	NPN	with lead, 3m long	\$33.70
5497	D-M9P-SAPC	PNP	with M8 male connector, 0.5m long	\$42.06
5498	D-M9N-SAPC	NPN	with M8 male connector, 0.5m long	\$42.06
211	SMC-BMG2-012	T-Slot Adaptor for SMC C-Slot Sensors		\$2.66