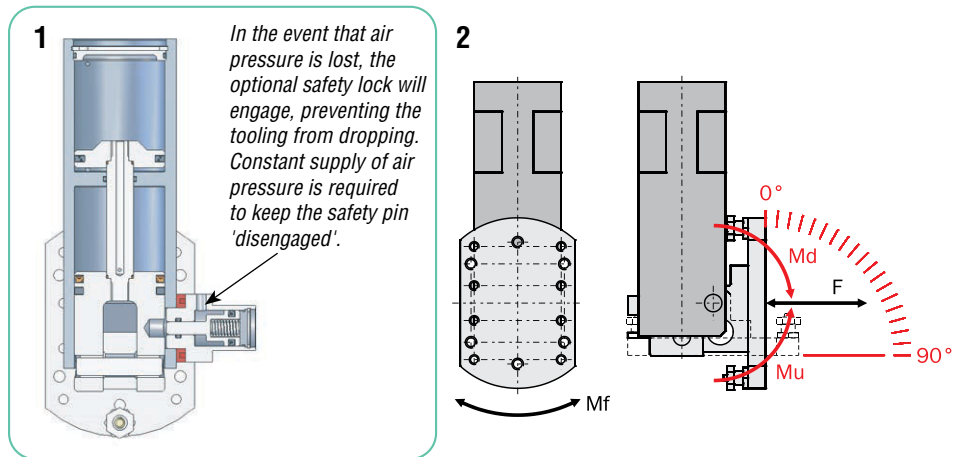


Pneumatic Tilt Unit – RBT

- Double acting.
- 90° actuation (2).
- Two rubber adjustable end strokes included.
- High lifting torque.
- Safety lock included with all except RBT30 (1).
- See Sensor Reference Guide on page 1006 for full list of compatible sensors.
- New flow regulator with 2 stages and buffer recommended for RBT units, available on page 1016.



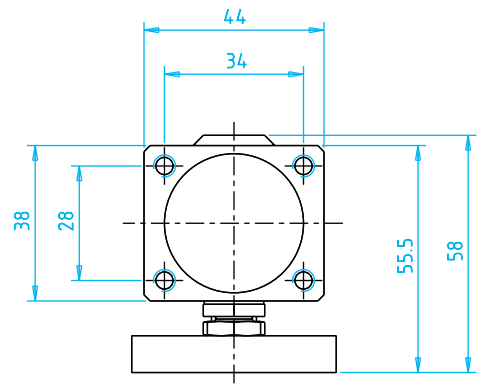
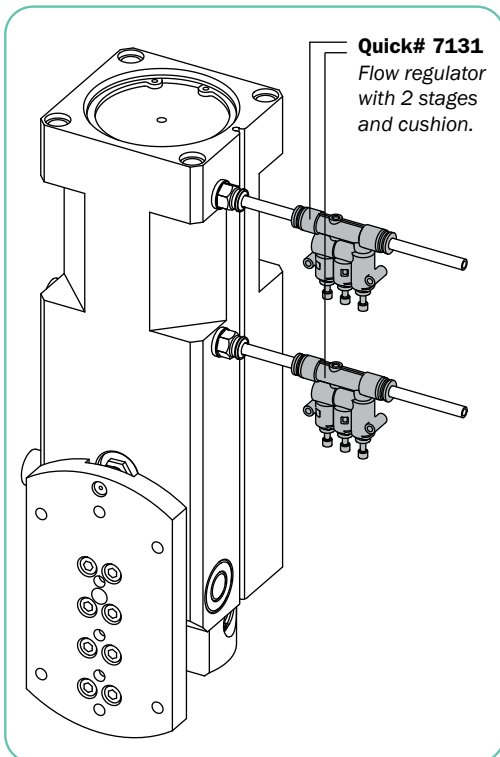
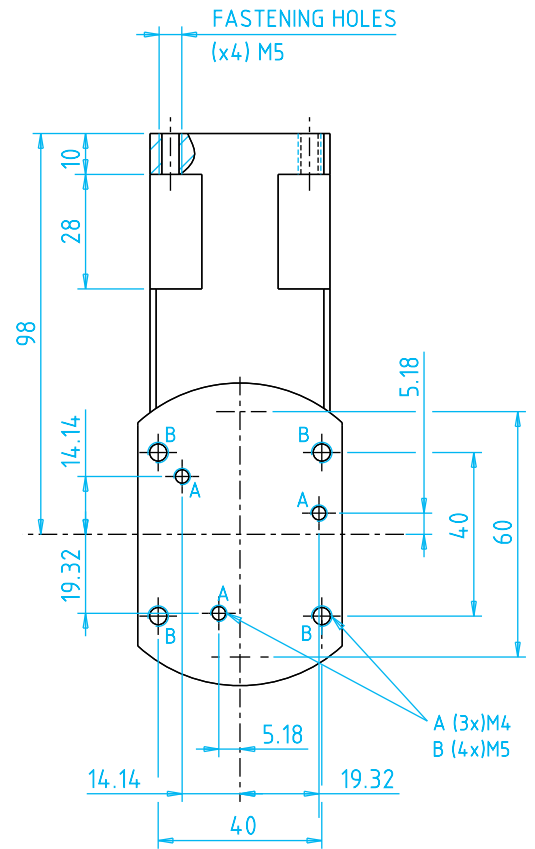
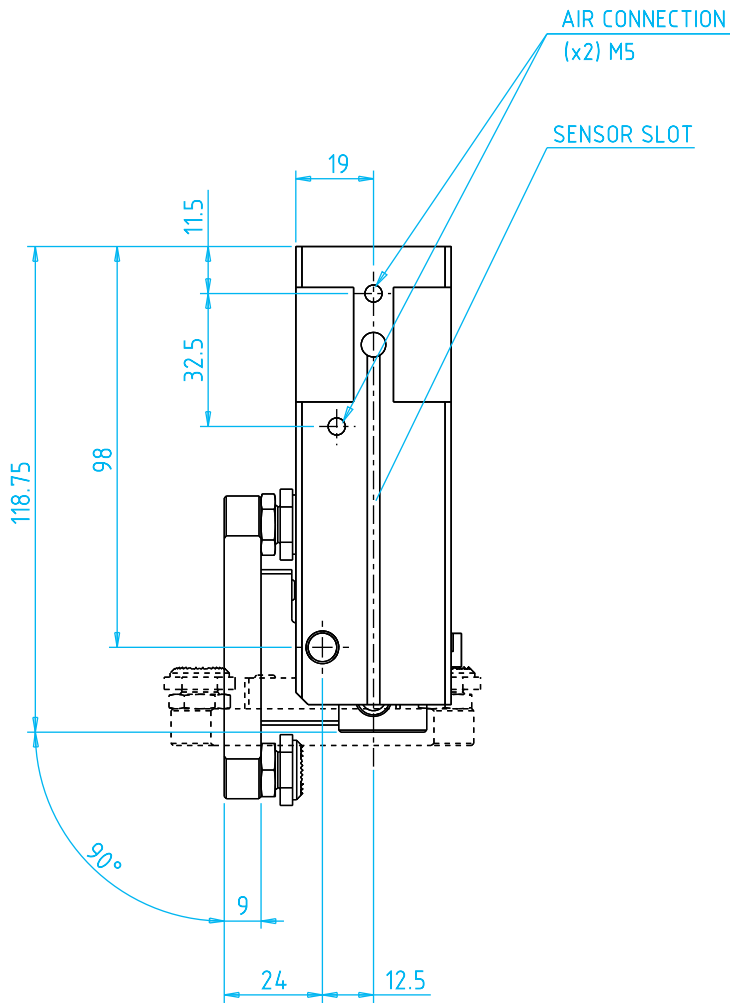
Quick#	6409	6398	6407	6408	6410
Part#	RBT30	RBT40	RBT50	RBT63	RBT80
Price	\$474.00	\$692.00	\$783.00	\$891.00	\$1,138.00
Weight	520g	1050g	1600g	2600g	6500g
Pressure range	36–116 psi				
Unlock pressure	-	> 50 psi			
Tilt angle	90°				
End stroke adjustment	±2°				
Lift torque at 87 psi (Mu)	>79 in-lbf	>212 in-lbf	>400 in-lbf	>700 in-lbf	>1540 in-lbf
Drop torque at 87 psi (Md)	>35 in-lbf	>97 in-lbf	> 194 in-lbf	> 371 in-lbf	>743 in-lbf
Allowed load (F)	11 lbf	22 lbf	45 lbf	67 lbf	134 lbf
Allowed movement (Mf)	>26 in-lbf	61 in-lbf	106 in-lbf	265 in-lbf	>442 in-lbf

Use Quick#s for easy online ordering.

Pneumatic Tilt Unit – RBT

(Dimensioned drawings at 50% scale)

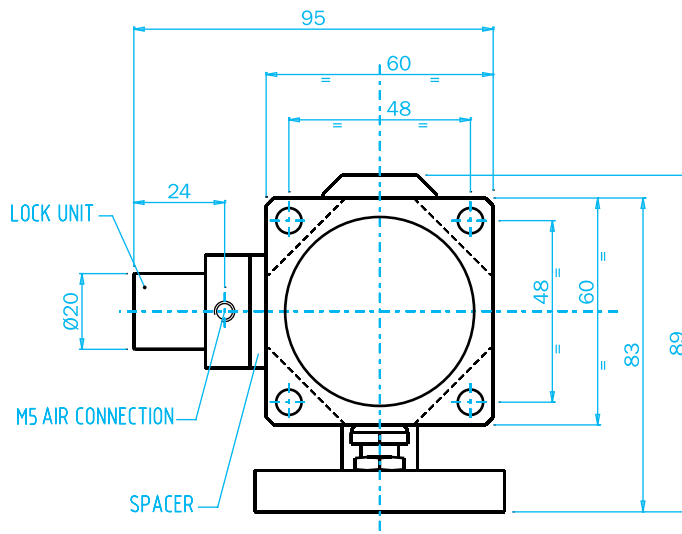
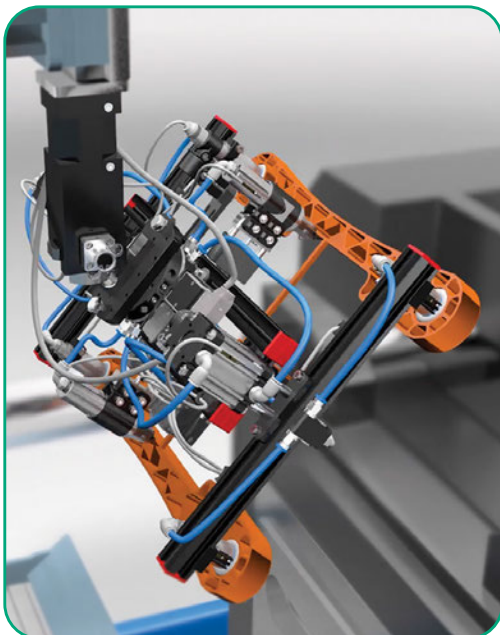
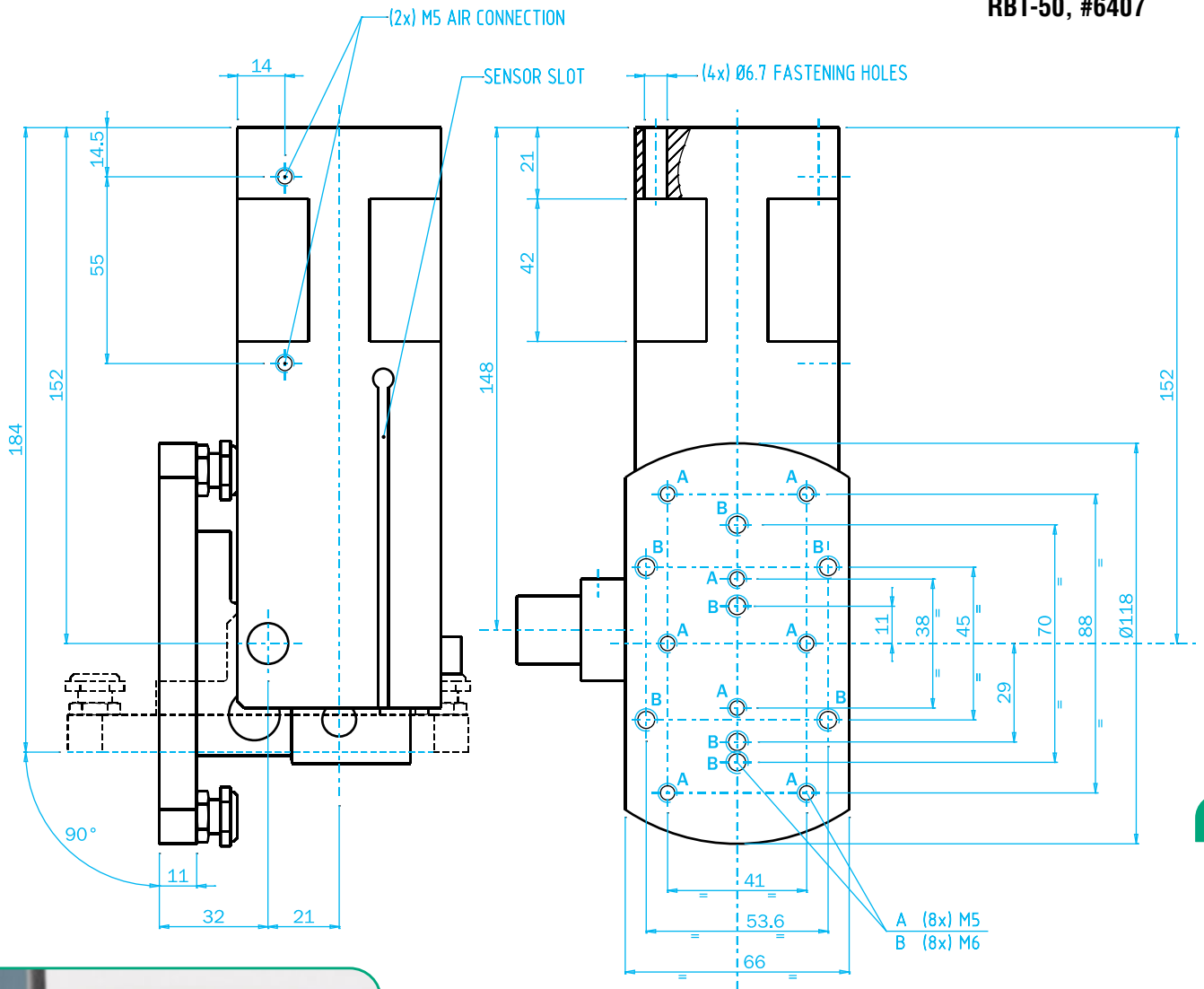
RBT-30, #6409



Pneumatic Tilt Unit – RBT

(Dimensioned drawings at 50% scale)

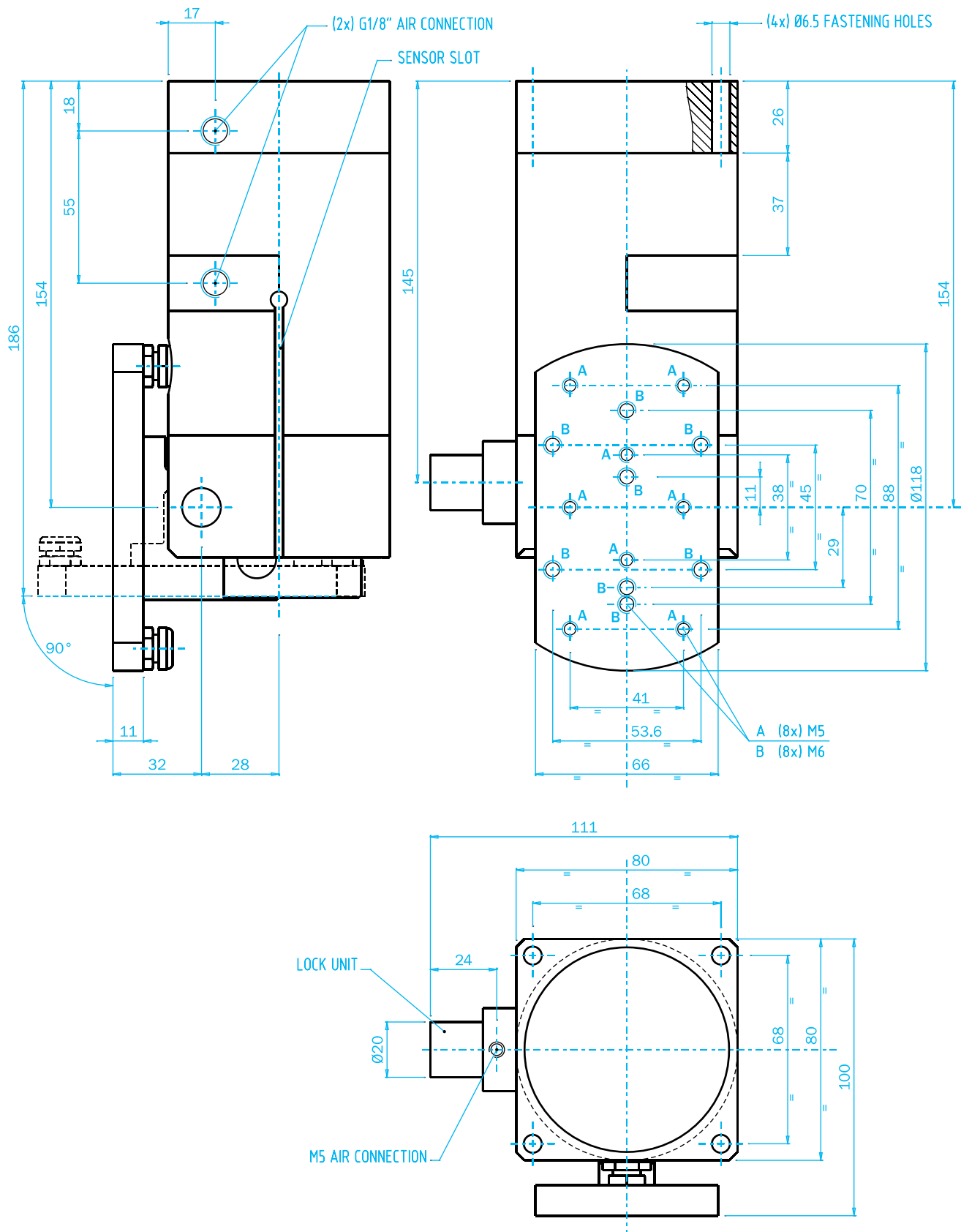
RBT-50, #6407



Pneumatic Tilt Unit – RBT

(Dimensioned drawings shown at 50%)

RBT-63, #6408



Pneumatic Tilt Unit – RBT

(Dimensioned drawings reduced to fit)

RBT-80, #6410

