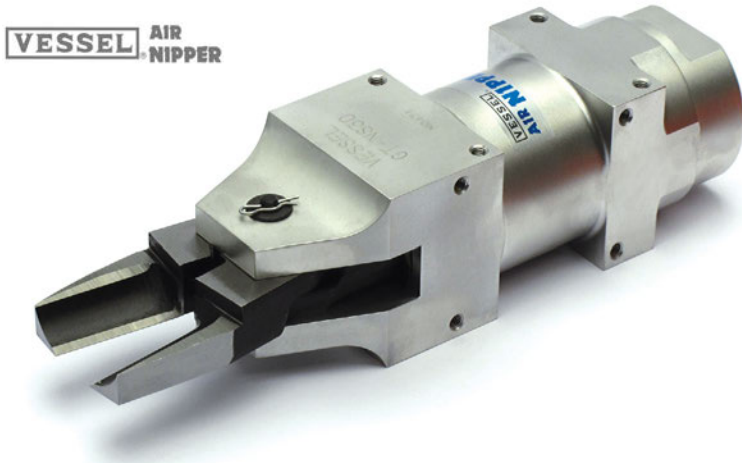


NS Nippers



Square Mounting Surfaces

The square mounting surfaces of these Vessel® nippers allow them to be easily mounted to an EOAT or to a degating station. Air ports on both the bottom and sides of the nipper body allow a wide choice of positioning options.

Single-acting, spring return and reset allows simple valving.

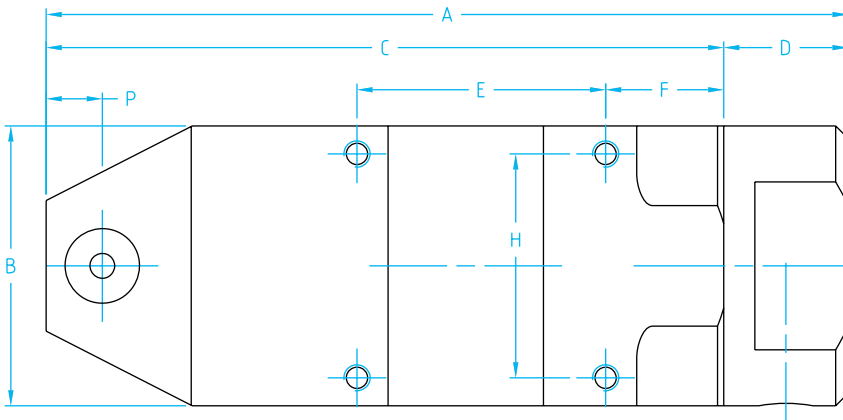
NS Standard Nippers - (Order blades separately)

Quick#	Part#	Price	Sprue Ø Cut	A	Body (Square)	Cutting Pressure	Working Air Pressure	Air Port	Weight
1484	GSN-NS5	\$238.00	2mm	94	30	88 lbf	57-71 psi	R1/8"	148g
1485	GSN-NS10L	\$267.00	4mm	113	36	132 lbf	57-85 psi	R1/8"	230g
1486	GSN-NS20	\$337.00	7mm	129	45	308 lbf	71-85 psi	R1/8"	390g
1487	GSN-NS30	\$399.00	10mm	170	56	617 lbf	71-85 psi	R1/8"	705g



NS Standard Nippers - dimensions

Quick#	Part#	A	B	C	D	E	F	G	H	I	J	K	N	O	P	ØQ
1484	GSN-NS5	94	30	74	20	30	14	19	24	M4x10	20	M3x5	7	23	7	30
1485	GSN-NS10L	113	36	93	20	30	18	23	28	M4x10	24	M4x5	12	26	7	36
1486	GSN-NS20	129	45	109	20	40	19	24	36	M4x12	30	M4x7	12	26	9	45
1487	GSN-NS30	170	56	150	20	60	20	30	46	M6x12	40	M5x10	17	36	15	56



Note: Rotating end cap can change the orientation of the air inlet port.

