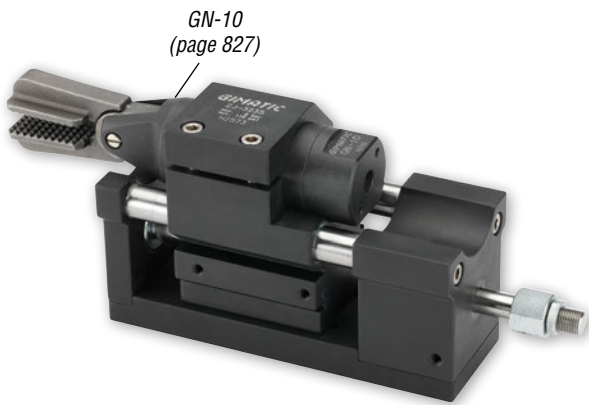


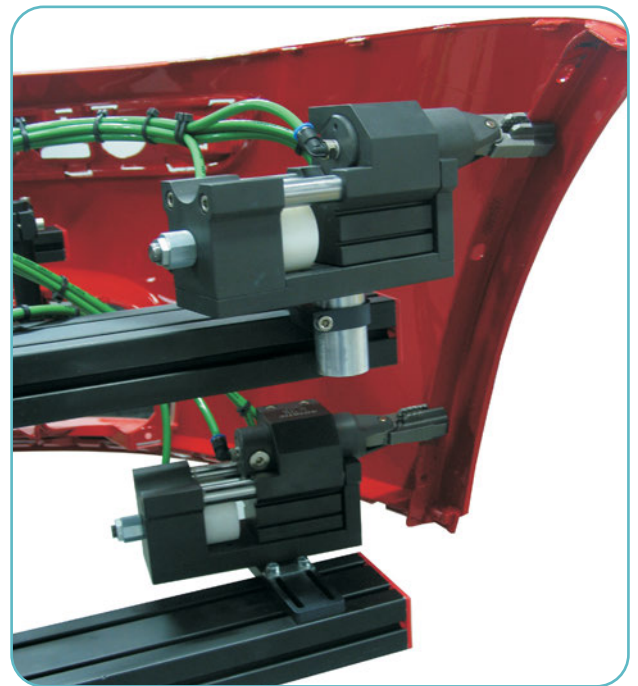
Gripper / Nipper Slide – ZJ

- Double-acting main cylinder and dual tie rods to precisely guide size 10 nippers.
- 32mm piston bore and 35mm adjustable stroke.
- Single-acting intermediate stopper.
- Ø36mm diameter clamp for GN-10 nipper body.
- See Sensor Reference Guide on page 1007 for a full list of compatible sensors.
- Optional 10mm spacer included.



Quick#	6475
Part#	ZJ-3235
Price	\$479.00
Weight	1330g
Pressure range	36–116 psi
Main stroke	35mm
Intermediate stroke	10–20mm
Main stroke with spacer	25mm
Extension force at 87psi	101 lbf

Use Quick#s for easy online ordering.



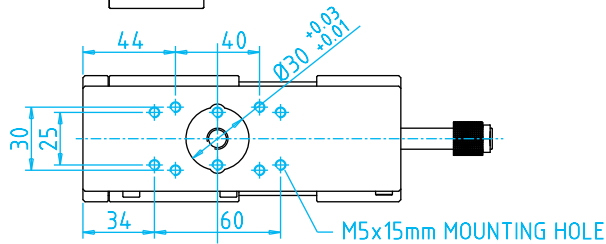
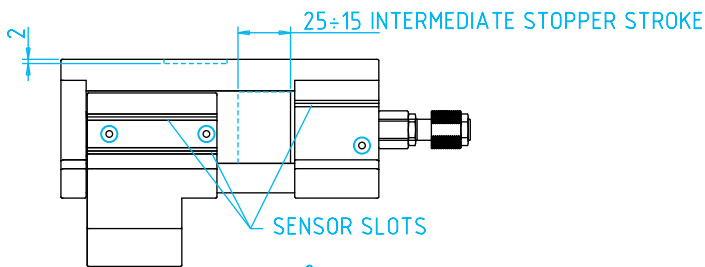
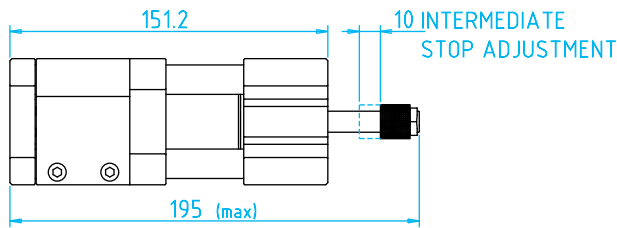
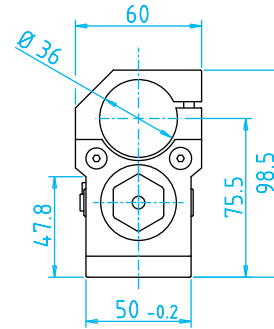
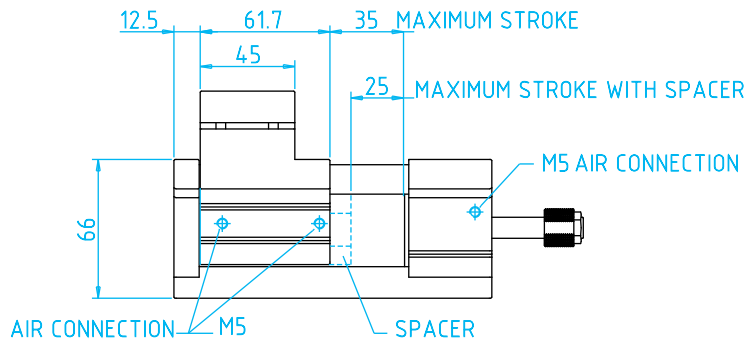
Mounting Accessories - Fasteners Included

Quick#	Part#	Price	Dimensions	Thread
7445	MFI-A360	\$48.00	Ø30 stud 79mm Clampable Length	M27x1
6972	MFM-A109	\$37.44	Ø30 stud 32mm Clampable Length	M27x1

Note: Dimensional drawings at EMlcorp.com

Gripper / Nipper Slide – ZJ

(Dimensioned drawing reduced to fit)



Mounting Examples

