

Two-Jaw Electric Angular Grippers – MPBM

- Self-centering jaw system (patented).
- Angular jaw movement.
- Self-adapting jaws part.
- Jaws contained within gripper profile.
- Optional Gimatic C-slot sensors on page 1002.
- Cables for direct connection to cobots on page 181.

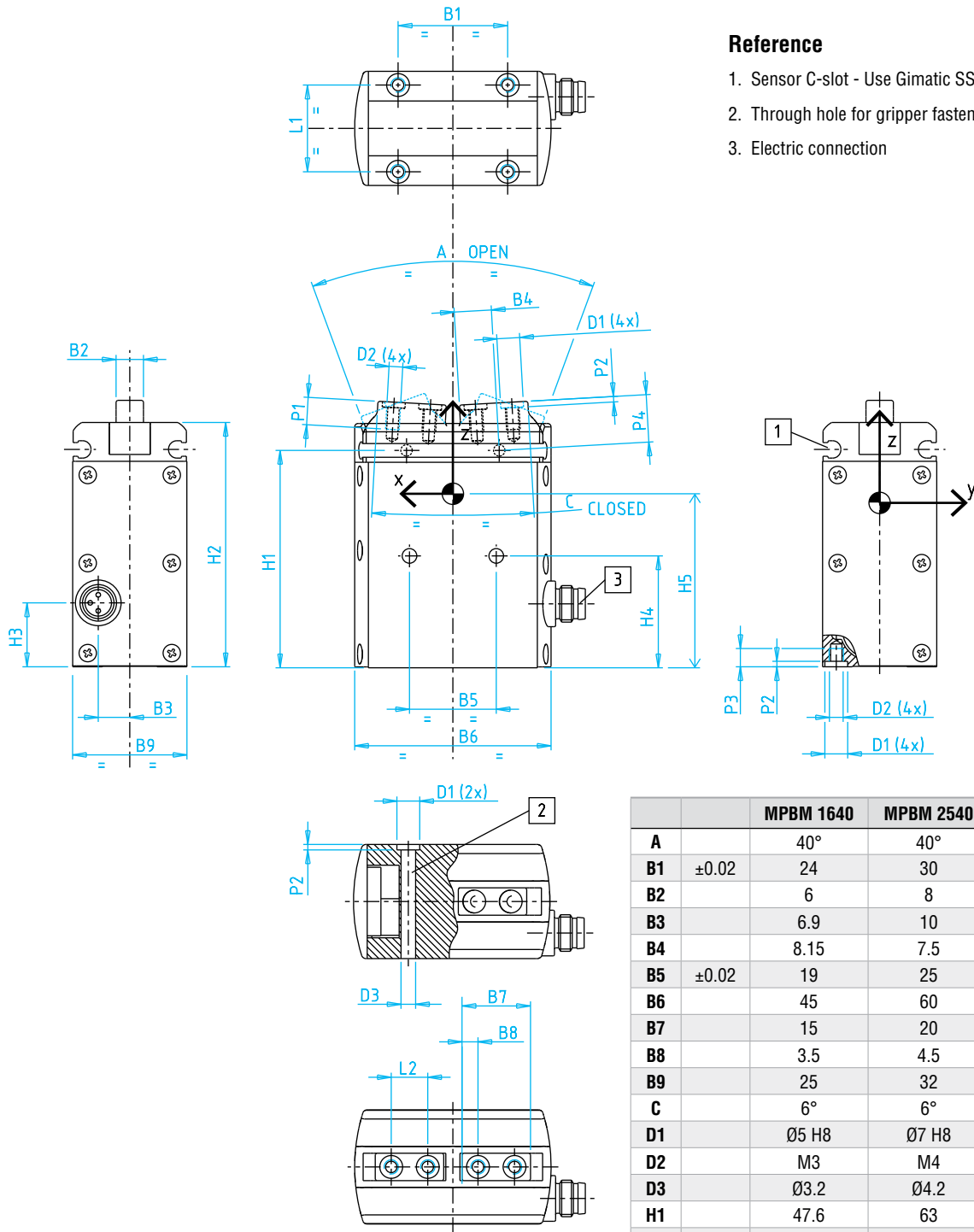


Quick#	7260	7261	7262
Part#	MPBM1640	MPBM2540	MPBM3240
Price	\$925.00	\$992.00	\$1,059.00
Total gripping force	6 in-lbf	13.4 in-lbf	24.5 in-lbf
Stroke	2x23°	2x23°	2x23°
Max frequency	0.93Hz	0.85Hz	0.81Hz
Jaw closing time	0.09s	0.13s	0.14s
Working gripper time	0.18s	0.31s	0.25s
Duty cycle	34%	53%	41%
Peak current	0.9 A	1.2 A	3.8 A
Brushless motor power	6W	11W	23W
Open/closed input signal	PNP open connector		
Repetition accuracy	0.02mm		
Environmental Degree	IP54		
Noise level	<70dB		
Weight (motor included)	140g	315g	510g

Continuous Flex Cables

Quick#	Part#	Description	Price
7160	CFGM800325P	2.5m cable 3-Wire with Straight M8 Connector	\$13.00
7161	CFGM890325P	2.5m cable 3-Wire with 90° M8 Connector	\$13.00

Two-Jaw Electric Angular Grippers – MPBM



Reference

- 1. Sensor C-slot - Use Gimatic SS & SN sensors
- 2. Through hole for gripper fastening
- 3. Electric connection

		MPBM 1640	MPBM 2540	MPBM 3240
A		40°	40°	40°
B1	±0.02	24	30	36
B2		6	8	9
B3		6.9	10	11
B4		8.15	7.5	12.25
B5	±0.02	19	25	30
B6		45	60	73
B7		15	20	24
B8		3.5	4.5	5
B9		25	32	35
C		6°	6°	6°
D1		Ø5 H8	Ø7 H8	Ø7 H8
D2		M3	M4	M5
D3		Ø3.2	Ø4.2	Ø5.2
H1		47.6	63	72
H2		53.5	70	80
H3		14	17	19
H4	±0.02	24.5	32	38
H5		32.3	42.5	48.5
L1	±0.02	19	24	26
L2	±0.02	8	11	14
P1		6	8	10
P2	+0.1	1.2	1.5	1.5
P3		4	6	8
P4		10.4	14	16