

Pneumatic Needle Gripper – PT

- Suitable for textile and food industry.
- Double acting & self centering.
- Simultaneous stroke adjustment.
- Several mounting accessories.
- #6759: Large through hole.
- #7370: Blow-off port for cleaning and releasing.
- #7370: PTFE pad for hot surface contact.
- #7370: Optional Gimatic C-slot sensors on page 1002.

PAAT Vacuum Cups on page 420 are an alternative to needle grippers for handling carbon fiber sheet and molded parts. PAAT Vacuum Cups do not damage the structure of composites.



#6759



#7370



| Quick# | 6759 | 7370 |
|-------------------------------|--|----------|
| Part# | PT25 | PT28 |
| Price | \$385.00 | \$519.00 |
| Medium | Filtered, lubricated/non-lubricated compressed air | |
| Pressure range | 43.5–116 psi | |
| Total opening force at 87 psi | 20.2 lbf | |
| Needle stroke | 1–7mm | |
| Number of needles | 4 | 8 |
| Needle depth | 0–2.5mm | |
| Weight | 165g | 182g |

Use Quick#s for easy online ordering.

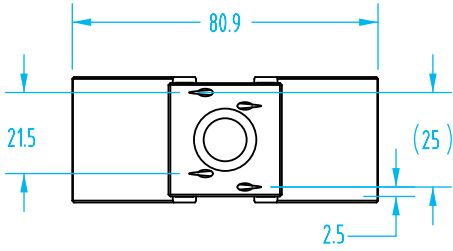
Replacement Needles - sold separately

| Quick# | Part# | Price |
|--------|----------|--------|
| 7199 | PT-25-05 | \$3.64 |

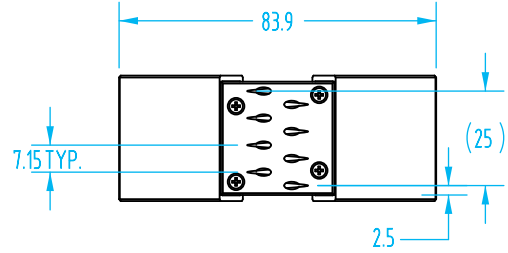
Pneumatic Needle Gripper – PT

(Dimensioned drawings shown 1/2 scale)

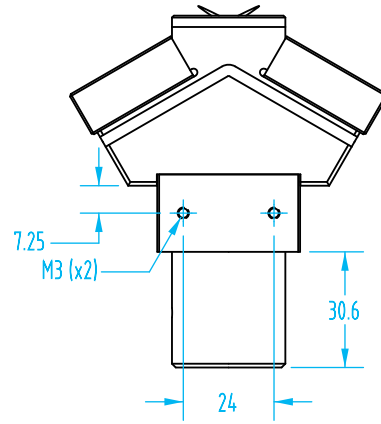
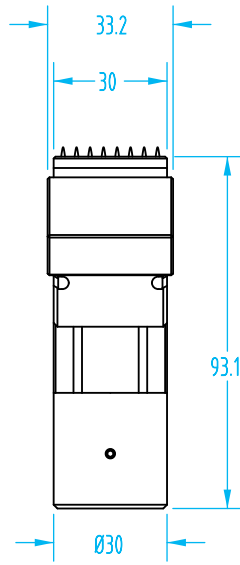
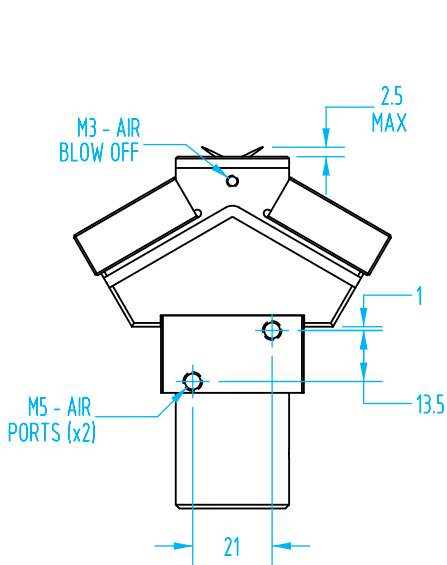
PT25, #6759



PT28, #7370



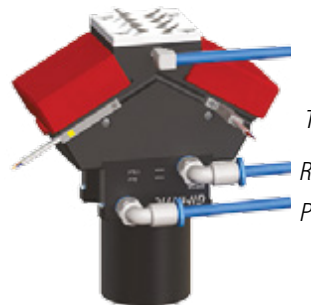
PT28 shown (PT25 has same body dimensions)



Simultaneous stroke adjustment of all 4 or 8 needles.



PT Needle gripper shown with VMK actuator found on page 312.



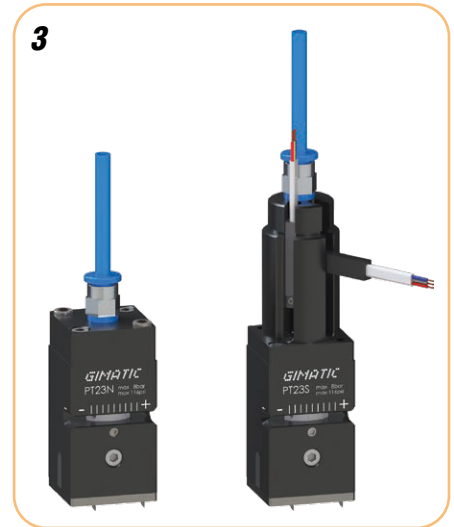
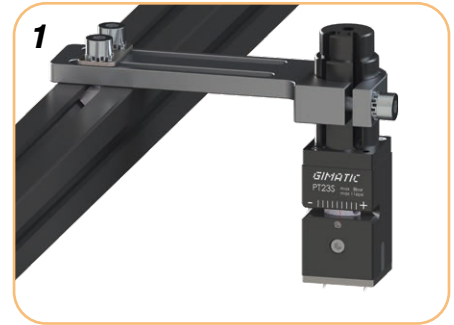
PT-28
T: Blow-off port
R: Needles out
P Needles in



PT-25 Large thru-hole

Self-centering Needle Mini-Gripper – PT

- Four (4) Needle Grippers
- Suitable for plastics, textile and food industry.
- Single acting (normally retracted) & Self centering.
- Needle simultaneous stroke adjustment.
- #7385 & 7520: Clamp mounting [1].
- #7384, #7478: Plate mounting [2].
- Air line and sensor installation [3].
- #7385 & 7520: Optional Gimatic C-slot sensors on page 1002.



| Quick# | 7384 | 7478 | 7385 | 7520 |
|-------------------------------|--|-----------|-----------|-----------|
| Part# | PT23N | PT30N | PT23S | PT30S |
| Price | \$351.00 | \$411.00 | \$399.00 | \$458.00 |
| Medium | Filtered, lubricated/non-lubricated compressed air | | | |
| Pressure range | 43.5–116 psi | | | |
| Total opening force at 87 psi | 9 lbf | 11.25 lbf | 9 lbf | 11.25 lbf |
| Needle stroke | 0–4mm | 0–7mm | 0–4mm | 0–7mm |
| Needle depth | 0–2mm max | 0–4mm max | 0–2mm max | 0–4mm max |
| Weight | 74g | 115g | 92g | 145g |

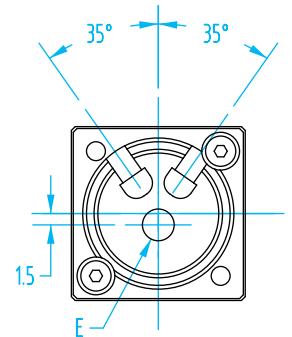
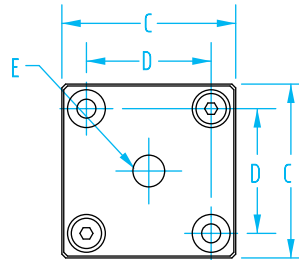
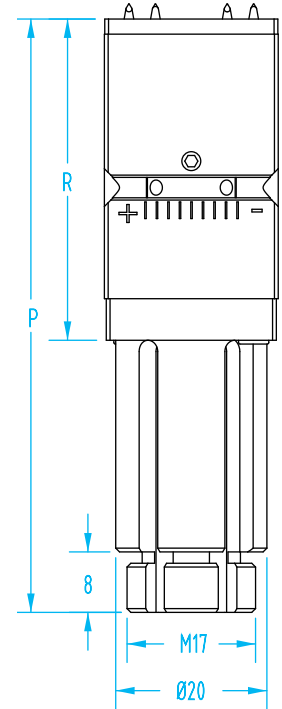
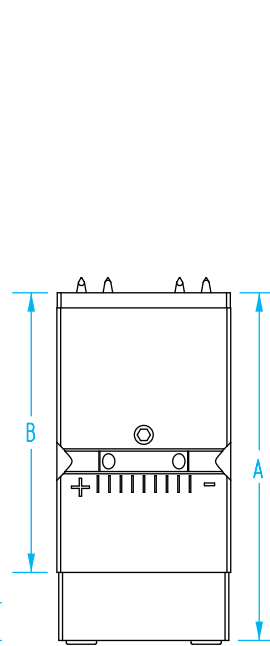
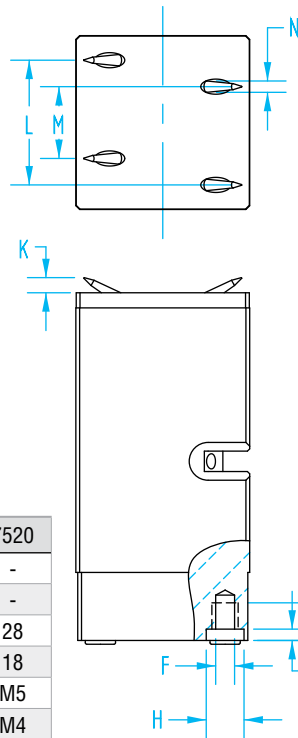
Replacement Needles - sold in a set of 4 needles

| Quick# | Part# | For: | Price |
|--------|---------|------------------|---------|
| 7386 | PT23-K4 | PT23: 7384, 7385 | \$92.00 |
| 7479 | PT30-K4 | PT30: 7478, 7520 | \$60.00 |

Self-centering Needle Mini-Gripper – PT

PT23N, PT30N; #7384, #7478

PT23S, PT30S; #7385, #7520



| | 7384 | 7478 | 7385 | 7520 |
|----------|-------|-------|------|------|
| A | 46.5 | 54 | - | - |
| B | 37 | 45 | - | - |
| C | 23 | 28 | 23 | 28 |
| D | 16.5 | 18 | 16.5 | 18 |
| E | M5 | M5 | M5 | M5 |
| F | M3 | M4 | M3 | M4 |
| G | 6 | 6 | 6 | 6 |
| H | Ø5 h8 | Ø7 h8 | - | - |
| J | 1.5 | 1.5 | - | - |
| K | 2 | 4 | 2 | 4 |
| L | 16.5 | 18 | 16.5 | 18 |
| M | 9.5 | 9 | 9.5 | 9 |
| N | 1.5 | 1.5 | 1.5 | 1.5 |
| P | - | - | 78.5 | 87.5 |
| R | - | - | 42.5 | 51.5 |

Stroke Adjustment

The gripper is self-centering. Therefore the piston end-stroke determines the stroke of all needles. To adjust the stroke, loosen the grub screw (G) and move the ferrule (A) by a 1.5mm allen key (B).

