

Gimatic® – Flat

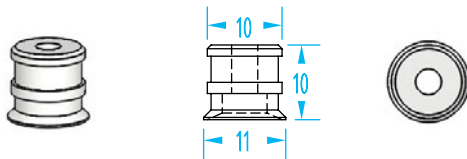
(Shown Actual Size)



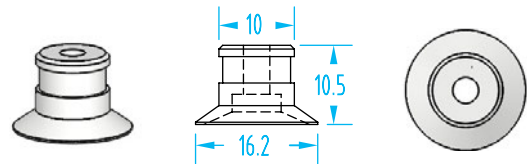
Gimatic Vacuum Cup Properties

Material	Color	Max Temp.	Durometer
FDA-Compliant Silicone	Clear	392°F	50°
Silicone	Red	392°F	50°
EPDM	Black	212° F	50°
HNBR	Blue	302° F	60°
Natural Rubber	Green	176°F	53°

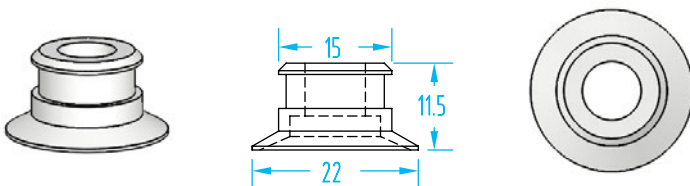
- Two styles: flat or with 1.5 bellows.
- Four materials: FDA-Compliant Silicone, EPDM, HNBR, & Natural Rubber.
- Non-marking HNBR material has a higher temperature range.
- Call EMI or visit our website for natural rubber cups.
- Diameters from 11mm to 53mm.
- See page 390 for nipple dimensions.



Cup Ø	Quick#	Part#	Reference	Price
11mm	5785	V0111S01	FDA-SIL	\$3.56
	5786	V0111E02	EPDM	\$2.59
	2019	V0111H04	HNBR	\$3.56
Nipple	V1157	GOC-2321408	Female M5	\$1.75
	V1159	GOC-2321410	Male M5	\$1.75
	V1161	GOC-2321412	Female G1/8"	\$3.79
	V1163	GOC-2321414	Male G1/8"	\$3.79



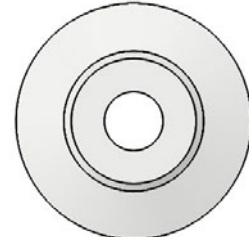
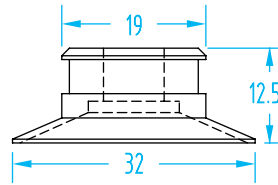
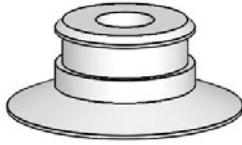
Cup Ø	Quick#	Part#	Reference	Price
16mm	5788	V0116S01	FDA-SIL	\$4.54
	5789	V0116E02	EPDM	\$2.59
	2020	V0116H04	HNBR	\$4.54
	V1157	GOC-2321408	Female M5	\$1.75
Nipple	V1159	GOC-2321410	Male M5	\$1.75
	V1161	GOC-2321412	Female G1/8"	\$3.79
	V1163	GOC-2321414	Male G1/8"	\$3.79



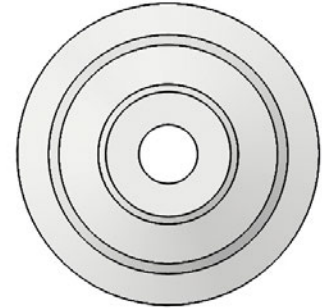
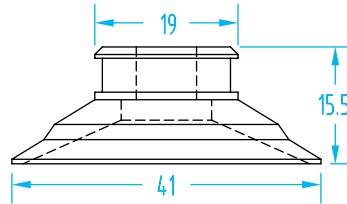
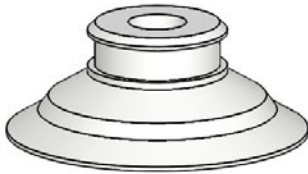
Cup Ø	Quick#	Part#	Reference	Price
22mm	5791	V0122S01	FDA-SIL	\$5.18
	5792	V0122E02	EPDM	\$3.56
	2021	V0122H04	HNBR	\$5.18
Nipple	V1171	GOC-2321422	Female G1/8"	\$5.84
	V1173	GOC-2321424	Male G1/8"	\$5.84
	V1175	GOC-2321426	Female G1/8"	\$5.84
	V1177	GOC-2321428	Male G1/8"	\$5.84

Gimatic® – Flat

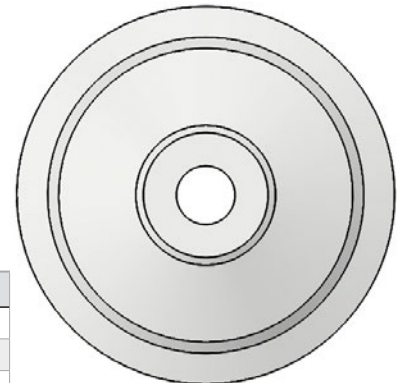
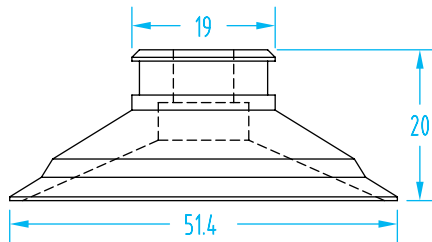
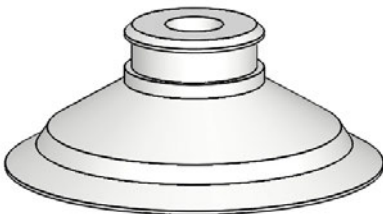
(Shown Actual Size)



Cup Ø	Quick#	Part#	Reference	Price
33mm	5794	V0133S01	FDA-SIL	\$5.83
	5795	V0133E02	EPDM	\$4.86
	2022	V0133H04	HNBR	\$5.83
Nipple	V1171	GOC-2321422	Female G1/8"	\$5.84
	V1173	GOC-2321424	Male G1/8"	\$5.84
	V1175	GOC-2321426	Female G1/8"	\$5.84
	V1177	GOC-2321428	Male G1/8"	\$5.84
	V1179	GOC-2321430	Female G1/4"	\$6.43
	5830	AV0114M16	Male G1/4"	\$7.14



Cup Ø	Quick#	Part#	Reference	Price
42mm	5797	V0142S01	FDA-SIL	\$7.14
	5798	V0142E02	EPDM	\$4.86
	2023	V0142H04	HNBR	\$7.14
Nipple	V1171	GOC-2321422	Female G1/8"	\$5.84
	V1173	GOC-2321424	Male G1/8"	\$5.84
	V1175	GOC-2321426	Female G1/8"	\$5.84
	V1177	GOC-2321428	Male G1/8"	\$5.84
	V1179	GOC-2321430	Female G1/4"	\$6.43
	5830	AV0114M16	Male G1/4"	\$7.14



Cup Ø	Quick#	Part#	Reference	Price
53mm	5800	V0153S01	FDA-SIL	\$8.11
	5801	V0153E02	EPDM	\$6.49
	2024	V0153H04	HNBR	\$8.11
Nipple	V1171	GOC-2321422	Female G1/8"	\$5.84
	V1173	GOC-2321424	Male G1/8"	\$5.84
	V1175	GOC-2321426	Female G1/8"	\$5.84
	V1177	GOC-2321428	Male G1/8"	\$5.84
	V1179	GOC-2321430	Female G1/4"	\$6.43
	5830	AV0114M16	Male G1/4"	\$7.14