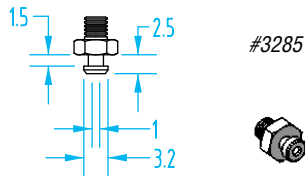
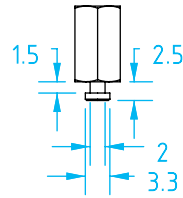


# Hithane® – Vacuum Cup Nipples

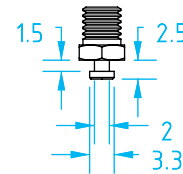
(Shown Actual Size)



#3285



#5434

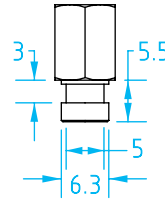


#5435

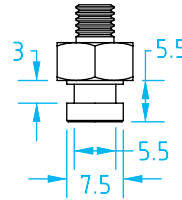
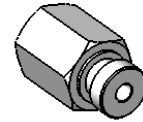


Thread	Quick#	Part#	Price
Male M3	3285	VSA5	\$6.09
Female M5	5434	GSF-HTN2-M5FX5	\$3.59
Male M5	5435	GSF-HTN2-M5MX5	\$3.59

For: Oval Cups: 2x4mm and 3.5x7mm



#5438

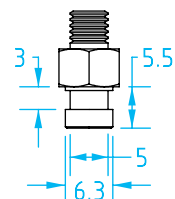


#5439

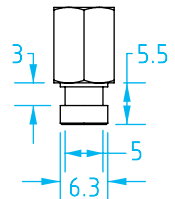


Thread	Quick#	Part#	Price
Female M5	5438	GSF-HTN2-M5FM	\$3.62
Male M5	5439	GSF-HTN2-M5MM	\$3.62

For: Oval Cups: 8x24mm and 10x30 mm



#378

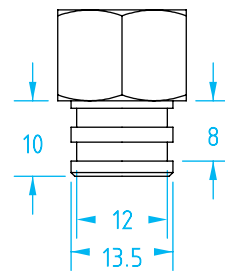


#379

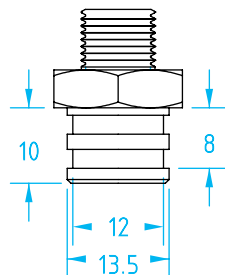
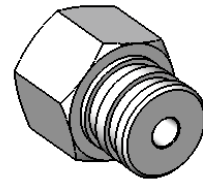


Thread	Quick#	Part#	Price
Male M5	378	GSF-N21-M5M	\$7.26
Female M5	379	GSF-N21-M5F	\$7.26

For: Oval Cups: 5x15mm and 6x18mm



#5440



#5441



Thread	Quick#	Part#	Price
Female G1/8"	5440	GSF-HTN2-G8FL	\$3.92
Male G1/8"	5441	GSF-HTN2-G8ML	\$3.92

For: Oval Cups: 15x45mm, 20x60mm, and 25x75mm

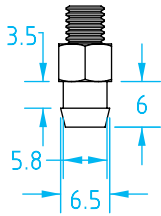


3D Printed Clamp Rings clamp onto the stem of oval Hithane vacuum cups to prevent them from rotating. Please note, they can only be installed once.

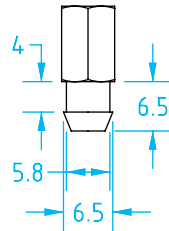
Quick#	Part#	For:	Price
770	GSF-515618-CR	5 x 15mm & 6 x 18mm cups: Q #5418, #5419	\$0.73
771	GSF-8241030-CR	8 x 24mm & 10 x 30mm cups: Q #5420, #5421	\$0.84
772	GSF-15452060-CR	15 x 45mm & 20 x 60mm cups: Q #5422, #5423	\$0.88
773	GSF-2575-CR	25x75mm cups: Q #5424	\$0.91

Hithane® – Vacuum Cup Nipples

(Shown Actual Size)



#408, nickle-plated, FDA approved

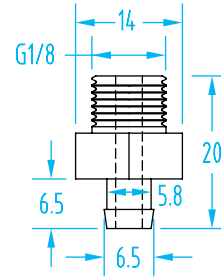


#5431

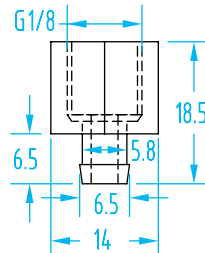


Thread	Quick#	Part#	Price
Female M5	5431	GSF-HTN1-M5F	\$3.59
Male M5	408	GSF-N16-M5M	\$3.52

For: Flat Cups: 5mm, 8mm, 11mm, 15mm, and 20mm  
 1.5 Bellows Cups: 11mm, 14mm, 20mm, and 25mm  
 2.5 Bellows Cups: 7mm, 9mm, 12mm, 14mm, 18mm, 20mm and 25mm



#1604

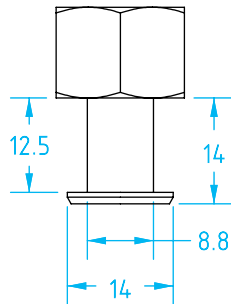


#1603

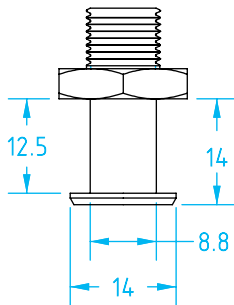
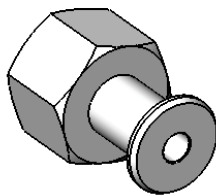


Thread	Quick#	Part#	Price
Male G1/8"	1604	GSF-PFN-G8M	\$3.99
Female G1/8"	1603	GSF-PFN-G8F	\$3.99

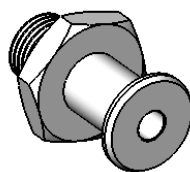
For: Flat Cups: 5mm, 8mm, 11mm, 15mm, and 20mm  
 1.5 Bellows Cups: 14mm, 20mm, and 25mm  
 2.5 Bellows Cups: 7mm, 9mm, 12mm, 14mm, 18mm, and 25mm



#5432

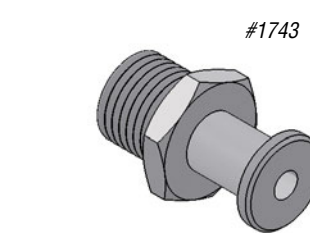


#5433

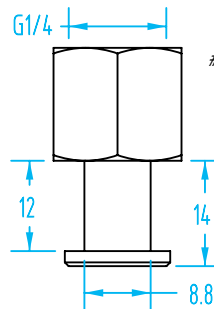
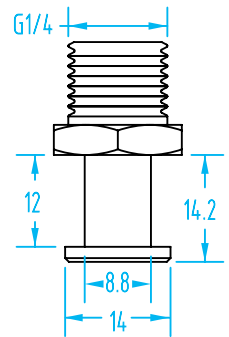


Thread	Quick#	Part#	Price
Female G1/8"	5432	GSF-HTN1-G8F	\$3.67
Male G1/8"	5433	GSF-HTN1-G8M	\$3.67

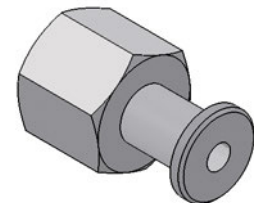
For: Flat Cups: 30mm, 40mm, and 50mm  
 1.5 Bellows Cups: 33mm, 43mm, and 53mm  
 2.5 Bellows Cups: 32mm, and 42mm



#1743



#1744



Thread	Quick#	Part#	Price
Male G1/4"	1743	GSF-HTN4-G4M	\$6.77
Female G1/4"	1744	GSF-HTN4-G4F	\$6.61

For: Flat Cups: 30mm, 40mm, and 50mm  
 1.5 Bellows Cups: 33mm, 43mm, and 53mm  
 2.5 Bellows Cups: 32mm, and 42mm