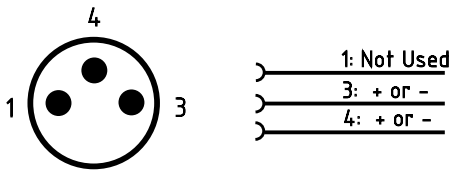
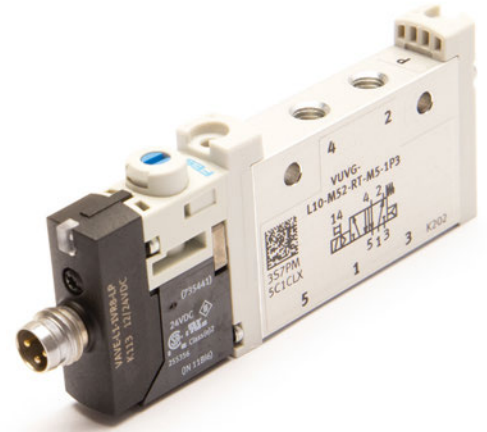
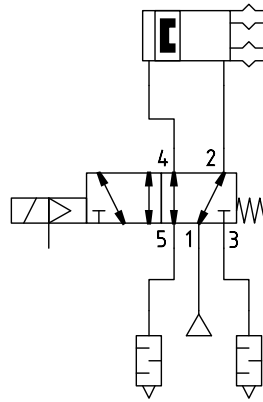


In-line Solenoid Valve

In-line valves are designed to be used as stand-alone units, no manifold required! All pneumatic connections are on the valve, open for equipping with your preferred fittings and tubing. The electrical connection to the solenoid is made through an M8 3-pin male plug. The solenoid is controlled by switching a 24Vdc monostable signal.

Optional 3-pin Sensor cables can be found on page 985.



5/2 Size10 Solenoid Inline Valve

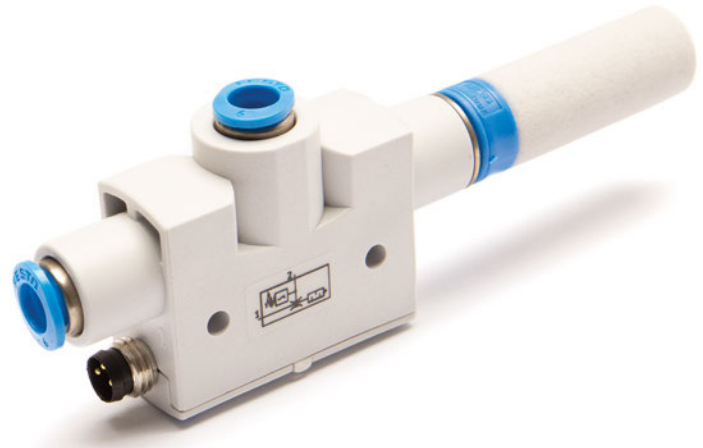
Quick#	Part#	Price	Style	Wt.
8067	VUVGL10M52-RTM5-1R8L	\$61.07	5 Port / 2 Position, Single Solenoid Valve M8, 3-pin Connector & M5 Ports	45g
Accessory				
8068	AMTE-M-H-M5	\$2.30	M5 Short Brass Silencer	

3-pin Sensor cables on page 985. See www.EMICorp.com for additional information.



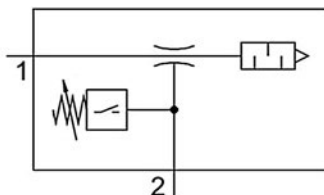
- High vacuum with integrated 3-pin M8 Male monitor switch and R01 silencer included.
- Optional low profile silencer #8069 installed with #244 G1/8 sealing ring.
- Housing made of light, impact-resistant plastic.
- Connection of compressed air and vacuum with push in Ø6mm
- Mounted by 3.4mm clearance holes with 25mm spacing.
- Operating temperature: 32°–122°F.
- Operating pressure: 1-8 bar
- Switching output: PNP

Vacuum Generator (with Silencer)



Quick#	Part#	Price	Max Vacuum Level*	Max Suction Flow*	Air Consumption*	Standard Supply Pressure	Max Operating Pressure	Tubing OD Port	Overall Length**	Wt**
8091	VN10H-T4-PQ2-VQ2-O1P	\$218.00	93%	0.77 SCFM	1.97 SCFM	87 psi	116 psi	Ø6mm	107mm	36g

*Values listed are achieved when supplied the listed standard supply pressure. **Overall Length and weight with standard silencer (shown above). This is reduced when using Quick# 8069. Full dimensional drawing online.



Vacuum Generator Accessories

Quick#	Part#	Description	Price
8069	AMTE-M-H-G18	G1/8" Short Brass Silencer	\$2.63
244	GSF-G-G8	G1/8" Sealing Ring (use with #8069)	\$0.23

3-pin Sensor cables on page 985. Dimensional drawings online.