

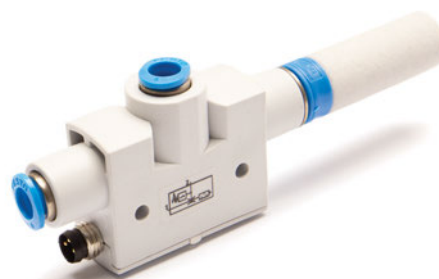
## Vacuum Generator Kit – High-Vacuum



**High Vacuum!**

- Housing made of lightweight impact-resistant plastic.
- Connection of compressed air and vacuum with push-in Ø6mm.
- Operating temp: 32–122° F.
- Festo Vacuum Generator #8091.
- Kit includes User Manual, Silencer, Velcro strap, 3-Pin Cable, and Clear PU tubing.

EMI's **Vacuum Generator Kit** operates off of a 24Vdc, mono-stable signal and is the ideal solution for vacuum EOAT. With an incorporated teachable vacuum switch, 3D printed housing and anti-slip straps, the VGK is a true plug and play solution for your cobot.



*For product specifications, see page 168.*

### High-Vacuum Vacuum Generator Kit with Teachable Vacuum Switch

| Quick# | Part#     | Price    | Max Vacuum Level* | Max Suction Flow* |            | Air Consumption* |            | Std. Supply Pressure |       | Overall Length** | Wt  |
|--------|-----------|----------|-------------------|-------------------|------------|------------------|------------|----------------------|-------|------------------|-----|
|        |           |          |                   | CFM               | l/min      | CFM              | l/min      | psi                  | Bar   |                  |     |
| 8021   | CRA-VGK-1 | \$265.00 | 93%               | 0.77 CFM          | 21.8 l/min | 1.97 CFM         | 55.8 l/min | 87 psi               | 6 Bar | 73.8mm           | 36g |

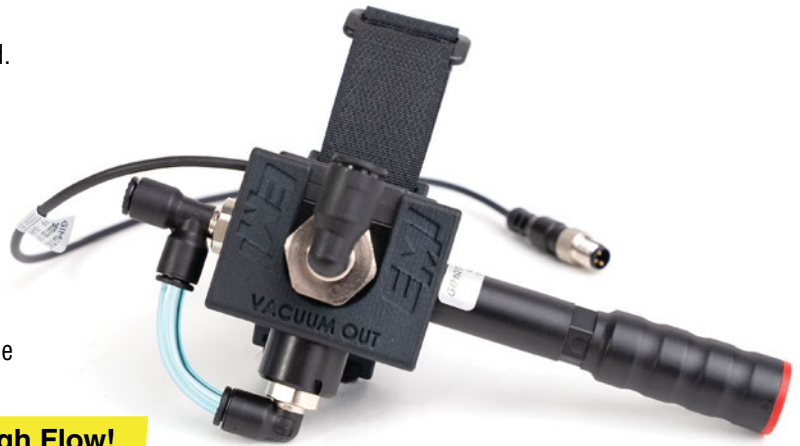
*\*Values listed are achieved when supplied at the listed standard supply pressure. Max operating pressure is 8 Bar/ 116psi.*

*\*\*Overall Length is 73.8mm when using Quick# 8069 and increases to 107mm when using standard silencer (shown above). Dimensional drawing online.*



## Vacuum Generator Kit – High-Flow

- Lightweight POM generator body with PA12 shroud.
- Gimatic Vacuum Generator #V2133.
- Atmospheric quick release valve.
- Pre-set vacuum switch: PNP, -30kPa.
- Compressed air connection: Ø6mm.
- Vacuum Connection: Ø8mm.
- Kit Includes: User Manual, Velcro straps, 3-pin cable and clear PU tubing.



**High Flow!**

EMI's **High Flow Vacuum Generator Kit** includes includes similar features to our Q#8021 that are more focused on high porous material handling. Lightweight construction and plug & play with most robot arms.



For product specifications, see page 176.

### High-Flow Vacuum Generator Kit with Pre-set Vacuum Switch and Quick Release Valve

| Quick# | Part#     | Price    | Max Vacuum Level* | Max Suction Flow* |          | Air Consumption* |            | Std. Supply Pressure |       | Overall Length** | Wt** |
|--------|-----------|----------|-------------------|-------------------|----------|------------------|------------|----------------------|-------|------------------|------|
|        |           |          |                   | CFM               | l/min    | CFM              | l/min      | psi                  | Bar   |                  |      |
| 8028   | CRA-VGK-2 | \$268.00 | 73%               | 2.86 CFM          | 81 l/min | 0.91 CFM         | 25.8 l/min | 87 psi               | 6 Bar | 164.4mm          | 133g |

\*Values listed are achieved when supplied at the listed standard supply pressure. Max operating pressure is 7 Bar/ 101 psi

\*\*Dimensional drawing online.



- CU
- QC
- VG
- VC
- VA
- SG
- GR
- MT
- AC
- CS
- CC

# Cobot Solenoid Valve Kit



**One-Time Purchase!  
Compatible with ALL  
EMI Grippers!**



| Pin# | Function             | Wire  | Control Box Terminal |
|------|----------------------|-------|----------------------|
| 1    | Not Used             | Brown | N/A                  |
| 3    | Ground               | Blue  | 0Vdc                 |
| 4    | Power / Switch Input | Black | Digital Output (DO)  |

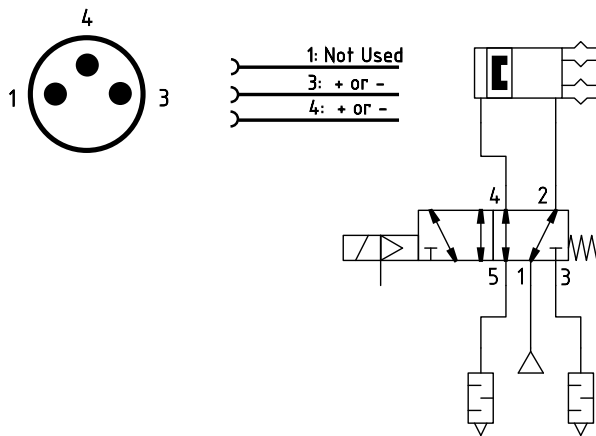
### Cobot Solenoid Valve Kit

| Quick# | Part#     | Price    | Wt.  |
|--------|-----------|----------|------|
| 8016   | CRA-SVK-1 | \$149.00 | 230g |

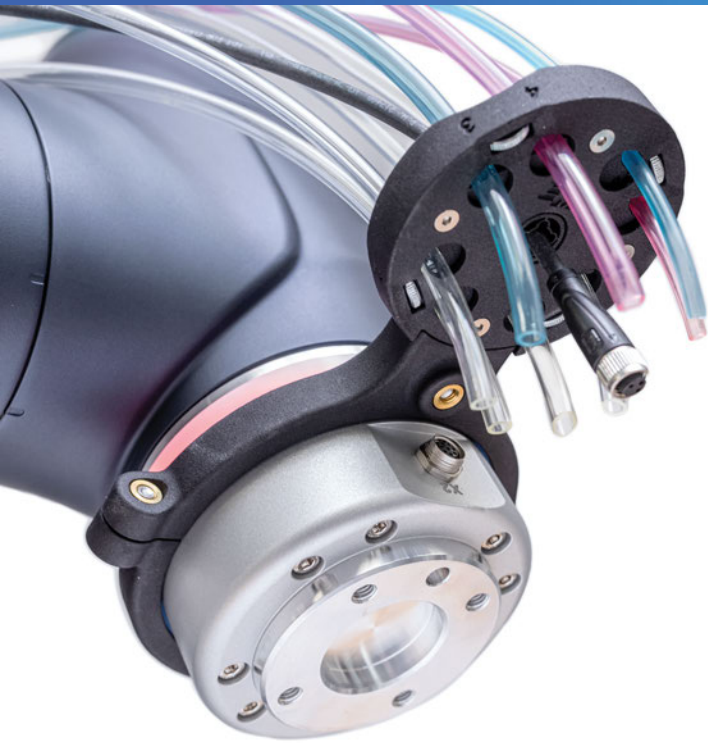
Use Quick#s for easy online ordering.

- Simple, on-arm design with protective shroud and non-slip Velcro® strap to mount to the robot arm.
- Quick# 8067: 5/2 Solenoid Valve – Single - Solenoid, monostable. See website for product specifications.

EMI's **Solenoid Valve Kit** for Collaborative Robots is an essential add-on for all pneumatic applications. It enables you to actuate single acting (NO/NC) and double acting end effectors while using a single digital output and compressed air line. Includes a M8, 3-pole cable, 4mm and 6mm fittings, silencers, threaded and push plugs, neoprene padded strap and a 3D printed shroud. EMI's Cobot Solenoid Valve Kit is the cornerstone of all pneumatic end effectors.



## Wrist Wrangler



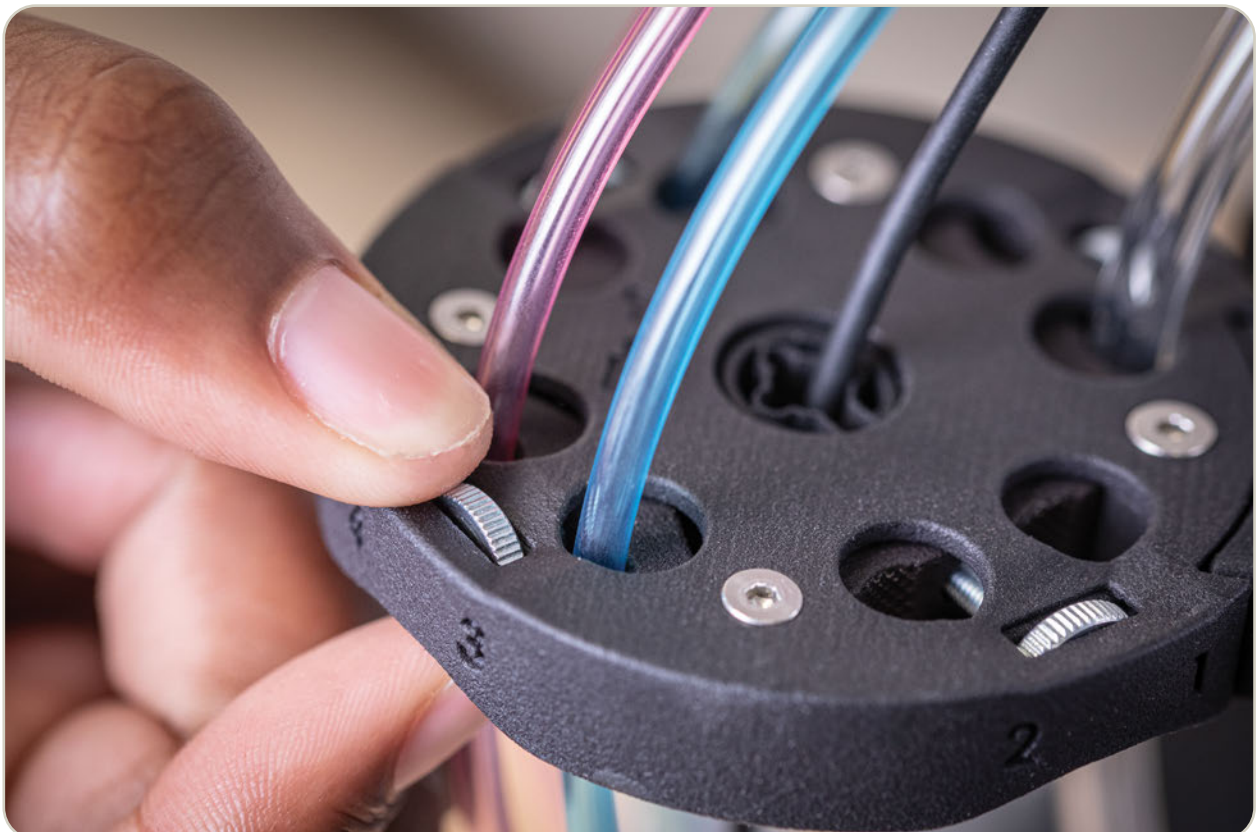
### Wrist Wrangler

| Quick# | Part#       | Description       | Price    |
|--------|-------------|-------------------|----------|
| 8024   | CRA-WW1-A3  | Ø63mm Wrist Mount | \$184.00 |
| 8025   | CRA-WW1-A5  | Ø75mm Wrist Mount | \$189.00 |
| 8027   | CRA-WW1-A10 | Ø90mm Wrist Mount | \$194.00 |

EMI's **Wrist Wrangler** is a cable and tubing management solution designed for collaborative robots. It clamps at the wrist of your robot and it helps organize cables and pneumatic lines for more complex EOAT or for multiple gripper tools. Available with Ø63mm, Ø75mm and Ø90mm robot wrist clamps, it can secure 8x conduits up to Ø10mm each with an additional grommet at the center for additional tubing and cables.



**Click for our Wrist Wrangler Video!**



- CU
- QC
- VG
- VC
- VA
- SG
- GR
- MT
- AC
- CS
- CC

## Cable Management Kit



### Cable Management Kit

| Quick# | Part#     | Price   | Wt. |
|--------|-----------|---------|-----|
| 8015   | CRA-CMK-1 | \$35.00 | 65g |

Organize and secure pneumatic and electric lines running down your robot arm. Clamps have (4x) channels for tubing and cables up to 8mm diameter. Kit includes two clamps, one 12in. strap, and one 18in. strap that fit most Collaborative Robots.

**Contact EMI for Custom Solutions!**



## EMI's In-House Custom Approach

### Find the Perfect lightweight, cost-effective solution!

EMI's in-house laser cutting, and 3D printing service allows us to provide considerable time and cost savings without sacrificing quality. This equipment allows us to provide custom solutions quickly and cost effectively.



## Tubing Management Kit



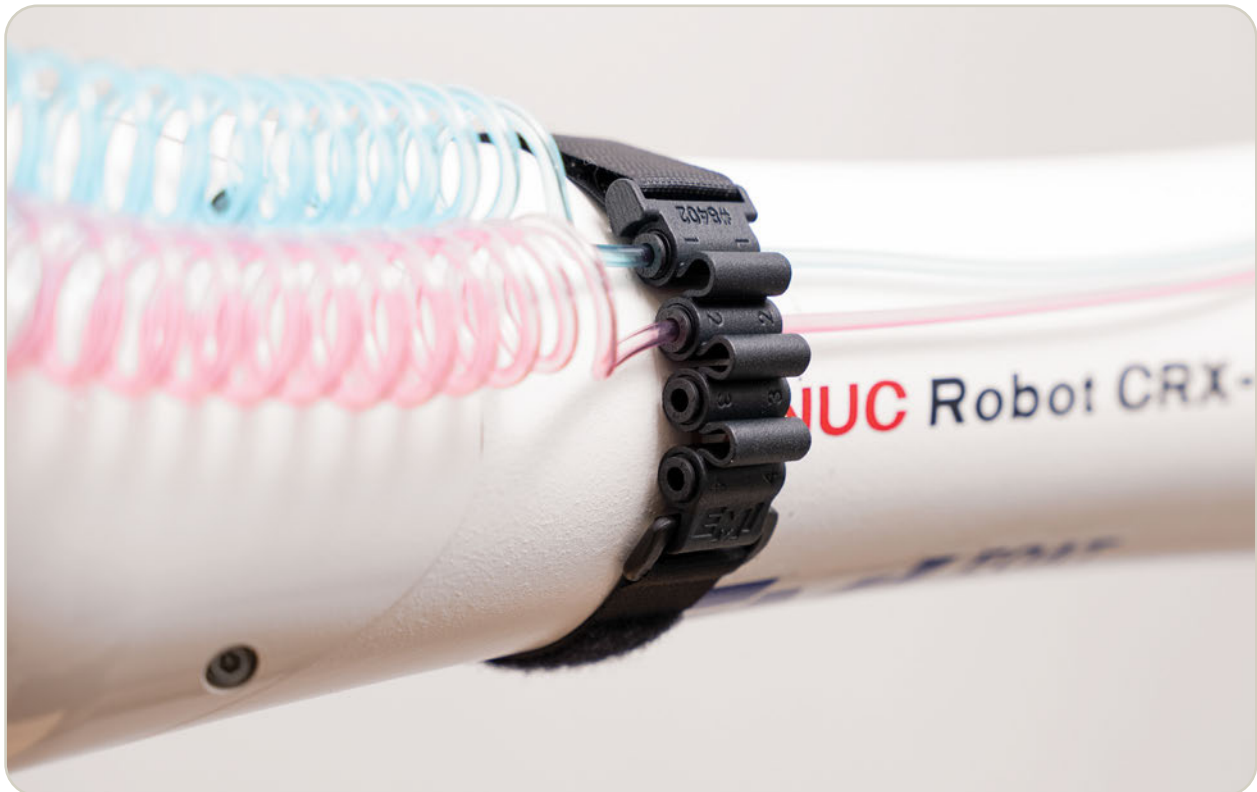
See PU tubing available from EMI on page 271.



### Tubing Management Kit

| Quick# | Part#         | Description     | Price   |
|--------|---------------|-----------------|---------|
| 8402   | CRA-TMK2-4P04 | For Ø4mm Tubing | \$37.75 |
| 8403   | CRA-TMK2-4P06 | For Ø6mm Tubing | \$43.00 |
| 8404   | CRA-TMK2-4P08 | For Ø8mm Tubing | \$48.50 |

EMI's **Tubing Management Kit** is an ideal solution to transition between joints or as a way to keep tubing organized along the arm of your robot. Available with push-to-connect fittings for Ø4mm, Ø6mm, Ø8mm and designed to flex and conform to different robot arm diameters. This kit includes one 12" and one 18" Velcro strap and push-to-connect fittings (4x).



- CU
- QC
- VG
- VC
- VA
- SG
- GR
- MT
- AC
- CS
- CC