

# Vacuum pumps / EJ-BLOWOFF

## EJ-BLOWOFF-MEDIUM-HF-2

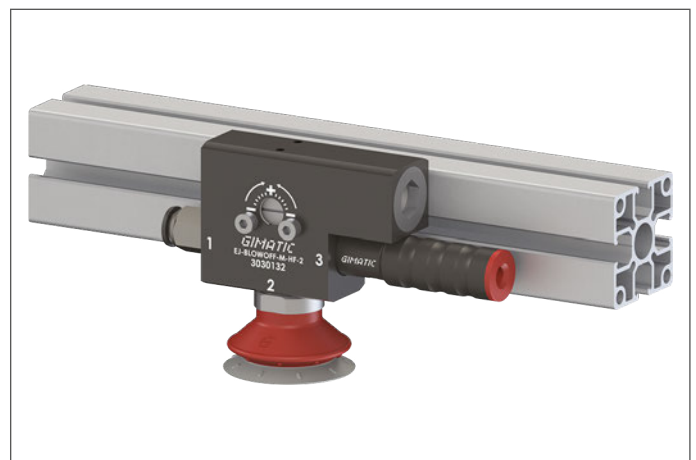
- Ideal for applications in dusty environments
- Adjustable blow-off for quick release and cleaning of the EJ cartridge
- Tank capacity 10 cm<sup>3</sup>
- Available with Gimatic's integrated vacuum switch, pre-set (-30, -50 and -70 kPa), in the PNP and NPN versions
- No additional valves are required, as only one 3/2 valve controls both the vacuum pump and the blow-off function
- Integrated silencer
- Anodized aluminum manifold
- Available with one two-stage EJ-MEDIUM cartridge (EJ-HF), high suction flow rate and low energy consumption

### Typical applications

- Packaging machines, for the food and pharmaceutical sector
- Handling of cosmetic products
- Pick-up of porous items (cardboard, wooden sheets)



Application example



### Technical features

Max feed pressure	0.7 MPa
Weight	200 ± 207 g
Material	PA, SS, POM, Al, Nitrile (NBR)
Noise level	< 70 dB

### Suction flow rate

Model	Feed pressure [MPa]	Air consumption [l/s]	Suction flow rate [l/s] at different vacuum levels [kPa]										Max vacuum [kPa]
			0	-10	-20	-30	-40	-50	-60	-70	-80	-90	
EJ-BLOWOFF-M-HF-2	0.6	0.43	0.78	0.68	0.52	0.31	0.21	0.15	0.10	0.08	–	–	-73

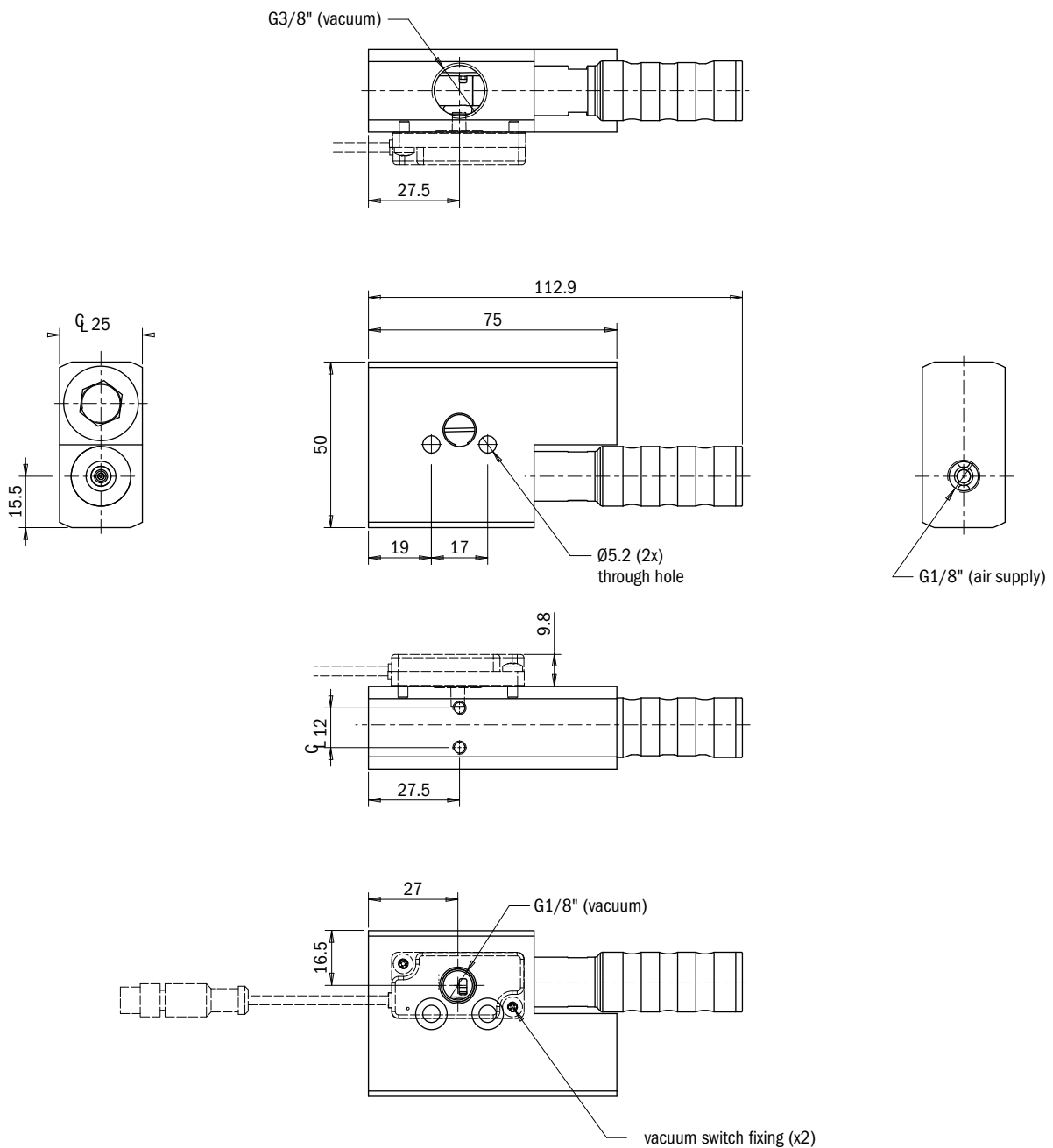
For technical specifications, regarding the suction flow rate and the air consumption at different pressures, please refer to the technical data sheets of the EJ-MEDIUM-HF cartridges in the two-stage version

### Evacuation time

Model	Feed pressure [MPa]	Air consumption [l/s]	Evacuation time [s/l] to reach different vacuum levels [kPa]									Max vacuum [kPa]
			-10	-20	-30	-40	-50	-60	-70	-80	-90	
EJ-BLOWOFF-M-HF-2	0.6	0.43	0.13	0.30	0.54	0.9	1.5	2.3	3.2	–	–	-73

For technical specifications regarding the evacuation time and the consumption at different pressures, please refer to the technical data sheets of the EJ-MEDIUM cartridges, in the two-stage version

Identification codes		
Alphanumeric code	Description	Order code
EJ-BLOWOFF-M-HF-2	EJ-BLOWOFF-MEDIUM-HF-2 vacuum pump with holder and integrated silencer	3030132
EJ-BLOWOFF-M-HF-2-VSW-30-P	EJ-BLOWOFF-MEDIUM-HF-2 vacuum pump with holder and integrated silencer, pre-set vacuum switch PNP -30 kPa	3030133
EJ-BLOWOFF-M-HF-2-VSW-50-P	EJ-BLOWOFF-MEDIUM-HF-2 vacuum pump with holder and integrated silencer, pre-set vacuum switch PNP -50 kPa	3030134
EJ-BLOWOFF-M-HF-2-VSW-70-P	EJ-BLOWOFF-MEDIUM-HF-2 vacuum pump with holder and integrated silencer, pre-set vacuum switch PNP -70 kPa	3030135
EJ-BLOWOFF-M-HF-2-VSW-30-N	EJ-BLOWOFF-MEDIUM-HF-2 vacuum pump with holder and integrated silencer, pre-set vacuum switch NPN -30 kPa	3030136
EJ-BLOWOFF-M-HF-2-VSW-50-N	EJ-BLOWOFF-MEDIUM-HF-2 vacuum pump with holder and integrated silencer, pre-set vacuum switch NPN -50 kPa	3030137
EJ-BLOWOFF-M-HF-2-VSW-70-N	EJ-BLOWOFF-MEDIUM-HF-2 vacuum pump with holder and integrated silencer, pre-set vacuum switch NPN -70 kPa	3030138



Introduction

Vacuum theory

Suction cups

Vacuum pumps

Customised solutions

Suspensions

System accessories