

# Vacuum pumps / EJ-SYS

## EJ-SYS-LARGE

- Ideal for centralized applications
- Easy installation and positioning thanks to several mounting options
- Anodized aluminum body
- High suction flow rate, with low energy consumption
- G1/2" vacuum port
- Integrated silencer
- The three-stage cartridge offers a higher initial flow rate, ideal for high speed applications
- Available with two- and three-stage EJ-LARGE cartridge (EJ-LP, EJ-HF, EJ-HV)

### Typical applications

- Particularly suitable for sealed applications, handling of glass, sheet metal, marble (EJ-HV)
- Handling of porous items, cardboard, wood and leaking surfaces (EJ-HF, EJ-LP)
- Rotary machines and cartoners



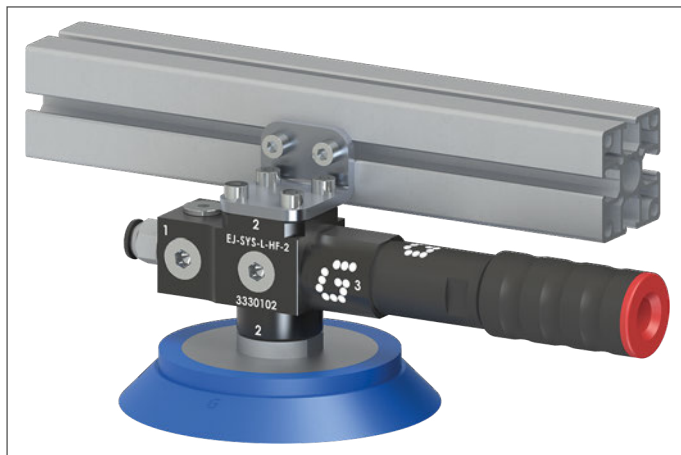
NEW



NEW



### Application example



**Technical features**

Max feed pressure	0.7 MPa
Weight	225 ± 241 g
Material	PA, SS, Al, Nitrile (NBR)
Noise level	< 70 dB

**Suction flow rate**

Model	Feed pressure [MPa]	Air consumption [l/s]	Suction flow rate [l/s] at different vacuum levels [kPa]										Max vacuum [kPa]
			0	-10	-20	-30	-40	-50	-60	-70	-80	-90	
EJ-SYS-L-LP-2	0.4	2.6	2.8	2.5	2.1	1.5	1.1	0.66	0.36	0.26	0.08	–	-89
EJ-SYS-L-LP-3	0.4	2.6	5.7	2.5	2.1	1.5	1.1	0.66	0.36	0.26	0.08	–	-89
EJ-SYS-L-HF-2	0.6	1.7	3.2	3.0	2.5	1.7	0.89	0.62	0.51	0.31	–	–	-73
EJ-SYS-L-HF-3	0.6	1.7	5.9	3.5	2.5	1.7	0.89	0.62	0.51	0.31	–	–	-73
EJ-SYS-L-HV-2	0.5	1.93	2.6	2.4	1.7	1.3	0.70	0.55	0.40	0.31	0.15	0.02	-94
EJ-SYS-L-HV-3	0.5	1.93	6.0	3.7	2.1	1.9	0.79	0.55	0.40	0.31	0.15	0.02	-94

For technical specifications, regarding the suction flow rate and the air consumption at different pressures, please refer to the technical data sheets of the EJ-LARGE cartridges in the two- and three-stage versions

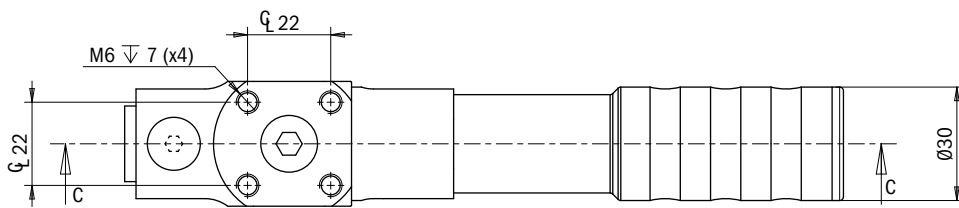
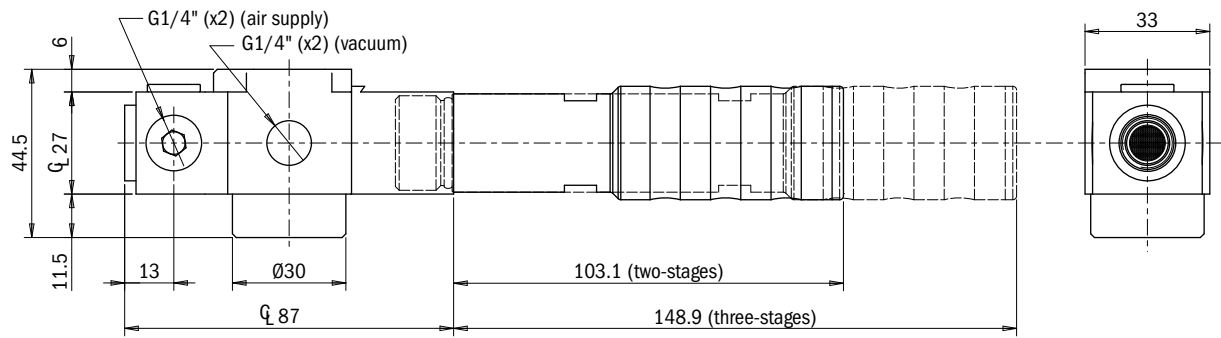
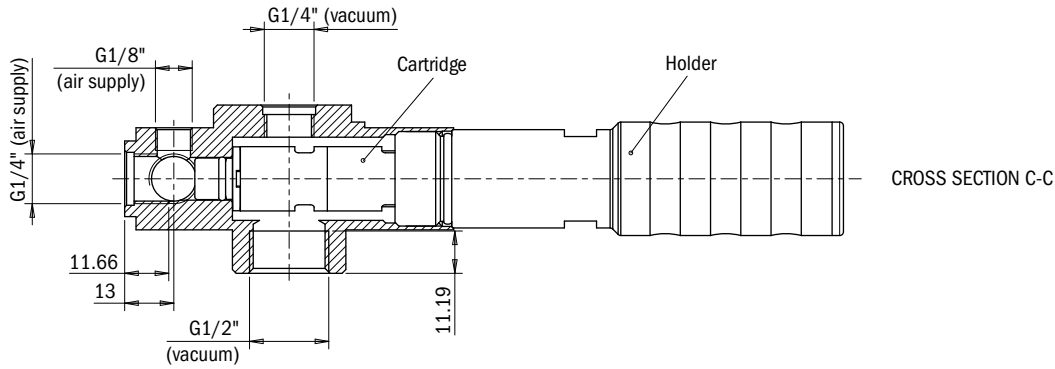
**Evacuation time**

Model	Feed pressure [MPa]	Air consumption [l/s]	Evacuation time [s/l] to reach different vacuum levels [kPa]										Max vacuum [kPa]
			-10	-20	-30	-40	-50	-60	-70	-80	-90		
EJ-SYS-L-LP-2	0.4	2.6	0.04	0.07	0.14	0.19	0.3	0.5	0.8	1.4	–	-89	
EJ-SYS-L-LP-3	0.4	2.6	0.02	0.07	0.12	0.2	0.3	0.5	0.8	1.4	–	-89	
EJ-SYS-L-HF-2	0.6	1.7	0.03	0.07	0.12	0.19	0.3	0.4	0.7	–	–	-73	
EJ-SYS-L-HF-3	0.6	1.7	0.02	0.05	0.10	0.19	0.3	0.4	0.7	–	–	-73	
EJ-SYS-L-HV-2	0.5	1.93	0.04	0.09	0.16	0.3	0.4	0.6	0.9	1.3	2.5	-94	
EJ-SYS-L-HV-3	0.5	1.93	0.02	0.06	0.10	0.2	0.3	0.4	0.7	1.1	2.4	-94	

For technical specifications regarding the evacuation time and the consumption at different pressures, please refer to the technical data sheets of the EJ-LARGE cartridges, in the two- and three-stage versions

### Identification codes

Alphanumeric code	Description	Order code
EJ-SYS-L-LP-2	EJ-SYS-LARGE-LP-2 vacuum pump with holder and integrated silencer	3330100
EJ-SYS-L-LP-3	EJ-SYS-LARGE-LP-3 vacuum pump with holder and integrated silencer	3330101
EJ-SYS-L-HF-2	EJ-SYS-LARGE-HF-2 vacuum pump with holder and integrated silencer	3330102
EJ-SYS-L-HF-3	EJ-SYS-LARGE-HF-3 vacuum pump with holder and integrated silencer	3330103
EJ-SYS-L-HV-2	EJ-SYS-LARGE-HV-2 vacuum pump with holder and integrated silencer	3330104
EJ-SYS-L-HV-3	EJ-SYS-LARGE-HV-3 vacuum pump with holder and integrated silencer	3330105



**Identification codes**

Alphanumeric code		Description	Order code
EJ-SYS-L-HF-2-H	<b>NEW</b>	EJ-SYS-LARGE-HF-2 vacuum pump with holder	3331102
EJ-SYS-L-HF-3-H	<b>NEW</b>	EJ-SYS-LARGE-HF-3 vacuum pump with holder	3331103
EJ-SYS-L-HV-2-H	<b>NEW</b>	EJ-SYS-LARGE-HV-2 vacuum pump with holder	3331104
EJ-SYS-L-HV-3-H	<b>NEW</b>	EJ-SYS-LARGE-HV-3 vacuum pump with holder	3331105



**Click for Pricing & Add to Cart**

