

Suction cups / Polyurethane

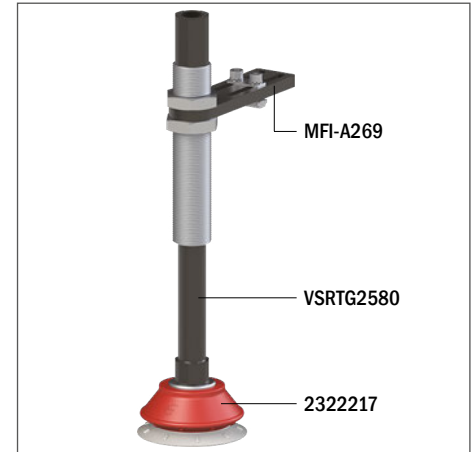
VG.IS70P bellows suction cups in polyurethane

- Ideal to handle uneven and rough surfaces
- High flexibility: the wide yet thin lip allows for adaptation to uneven surfaces
- Polyurethane material with double hardness, 30/60 Shore
- Good resistance to wear

NEW



Application example



Technical data

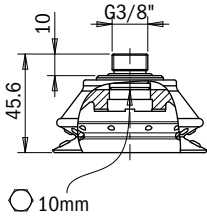
| Material | Lifting force [N] perpendicular to the surface, at various vacuum levels | | | Lifting force [N] parallel to the surface, at various vacuum levels | | | Volume [cm ³] | Min curve radius [mm] | Max vertical movement [mm] | Suction cup weight [g] |
|----------|--|---------|---------|---|---------|---------|---------------------------|-----------------------|----------------------------|------------------------|
| | -20 kPa | -60 kPa | -90 kPa | -20 kPa | -60 kPa | -90 kPa | | | | |
| PU30/60 | 60.4 | 113.5 | 170.3 | 42.3 | 75.2 | 123.1 | 41.5 | 51 | 16.3 | 40 |

Technical features

| Material | Color | Hardness | Temperature range |
|------------------------------|------------|-------------|-------------------|
| Polyurethane PU, 30/60 Shore | Grey / Red | 30/60 Shore | +50 - +113 °F |

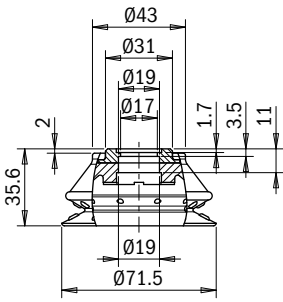
| Identification codes | | | |
|----------------------|---------------------|--|------------|
| Drawing | Alphanumeric code | Suction cups with fitting | Order code |
| A | VG.IS70P.30/60.G38M | VG.IS70 suction cup, polyurethane, 30/60 Shore, G3/8" male | 2322217 |

A



| Identification codes | | | |
|----------------------|-------------------|--|------------|
| Drawing | Alphanumeric code | Suction cups | Order code |
| A | VG.IS70P.30/60 | VG.IS70 suction cup, polyurethane, 30/60 Shore | 2322216 |

A



| Identification codes | | | |
|----------------------|-------------------|--------------------|------------|
| Drawing | Alphanumeric code | Fittings | Order code |
| A | FT.G38M.199 | G3/8" male fitting | 1900039 |

A

