

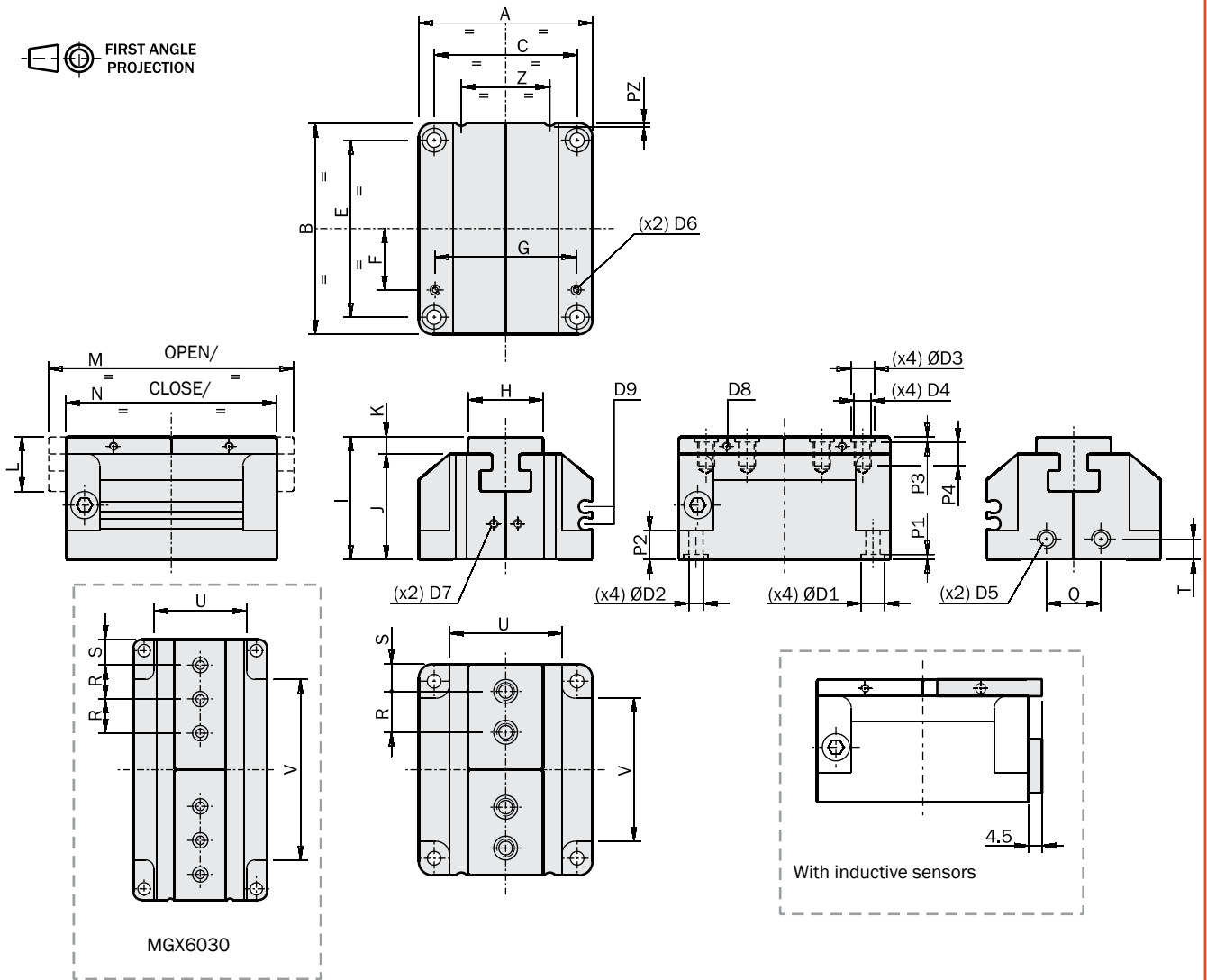
2-jaw parallel self-centering pneumatic gripper series MGX

- Flat profile.
- Robust guide.
- High gripping force.
- Small weight and dimensions.
- High dimensional accuracy.
- Spring closed (-NC) or spring open (-NO) option.
- FDA-H1 food-grade grease.



	MGX2005	MGX2508	MGX3210	MGX3214	MGX4015	MGX5020	MGX6030
Medium	Compressed air in compliance with ISO 8573-1:2010 [7:4:4]						
Operating pressure range	1.5 ÷ 8 bar						
Operating temperature range	5° ÷ 50°C.						
Gripping force at 6 bar on each jaw	90 N	145 N	230 N	160 N	375 N	650 N	830 N
Total gripping force at 6 bar	180 N	290 N	460 N	320 N	750 N	1300 N	1660 N
Total stroke	5 mm	8 mm	10 mm	14.6 mm	15 mm	20 mm	30 mm
Maximum working frequency	3 Hz	3 Hz	3 Hz	3 Hz	2 Hz	2 Hz	2 Hz
Cycle air consumption	5 cm ³	10 cm ³	22 cm ³	22 cm ³	48 cm ³	86 cm ³	169 cm ³
Opening / Closing time without load	7 ms	10 ms	20 ms	20 ms	50 ms	70 ms	140 ms
Repetition accuracy	0.02 mm	0.02 mm	0.02 mm	0.02 mm	0.02 mm	0.02 mm	0.02 mm
Weight	95 g	150 g	270 g	270 g	545 g	900 g	1525 g

Dimensions (mm)



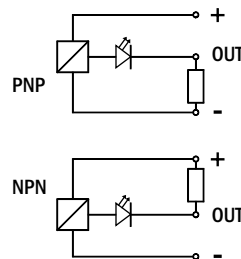
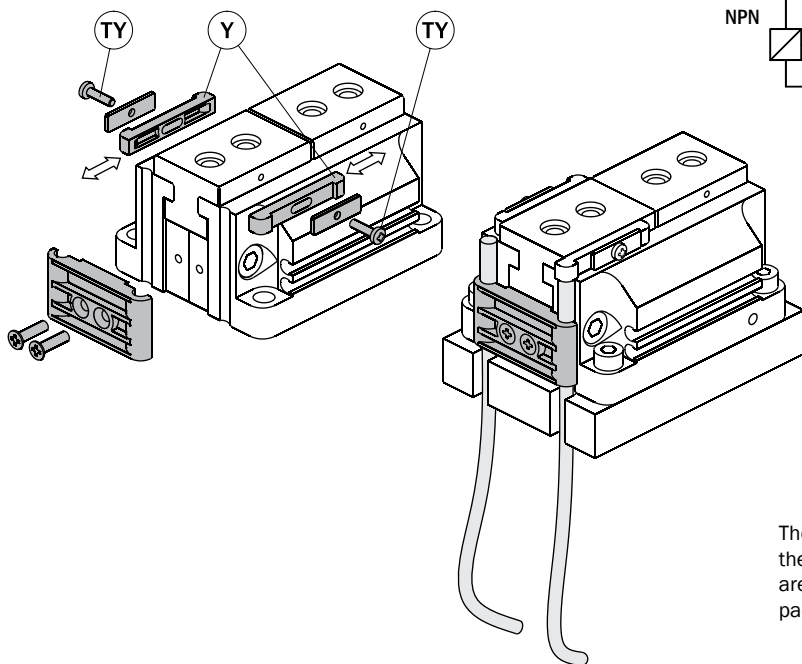
		MGX2005	MGX2508	MGX3210	MGX3214	MGX4015	MGX5020	MGX6030
A		35.8	42	51	51	61.2	70	78.6
B		44	55	62	62	93	118	153
C	±0.04	28.3	33	42	42	51	58	66
D1		Ø5 H7	Ø7 H7	Ø7 H7	Ø7 H7	Ø7 H7	Ø9 H7	Ø9 H7
D2		Ø3.2	Ø4.2	Ø4.2	Ø4.2	Ø5.2	Ø6.2	Ø6.2
D3		Ø5 H7	Ø7 H7	Ø7 H7	Ø7 H7	Ø9 H7	Ø12 H7	Ø9 H7
D4		M3	M4	M5	M5	M6	M8	M6
D5		M5	M5	M5	M5	M5	G1/8"	G1/8"
D6		M3	M3	M3	M3	M3	M3	M3
E	±0.02	36.5	46	52	52	80	105	140
F		12.5	15.5	18	18	27.5	37	43.5
G		27.2	33.6	41.4	41.4	49.6	58.6	67.6
H	±0.05	14	16	22	22	25	28	30
I		26	28.5	36	36	42	49	58
J		22	24	31	31	37	43	51
K		4	4.5	5	5	5	6	7
L		11.2	12.7	16	16	20	25	29
M		49	63	72	76	108	138	183
N		44	55	62	62	93	118	153
P1		1.2	1.5	1.5	1.5	1.5	2	2
P2		5.5	6	8.4	8.4	9	10	13.5
P3		1.2	1.5	1.5	1.5	2	2.5	2.5
P4		5	5.2	7	7	9	12	12
Q		11	12	16	16	31.2	32	40
R	±0.02	9	10	12	12	12	24	20
S		5.5	6	8	8	12.5	14	15
T		5.8	6	6	6	6	8	8
U		20.8	24	33	33	41.2	46	54.6
V		29	37	42	42	65	88	106
Z		17	20	26	26	30	33	35
PZ		0.5	0.5	0.8	0.8	0.8	0.8	0.8

Sensors

The operating position can be checked by magnetic sensors (optional), detecting the magnet of the piston, or by inductive sensors (optional), detecting the ball (SY) in the appendix (Y). Two adjustable appendices can be mounted on the jaw using the supplied screws (TY).
Use 4mm diameter inductive sensors.

Ordering codes of the inductive sensors:

SI4M225-G	NPN	2.5m cable
SI4N225-G	PNP	

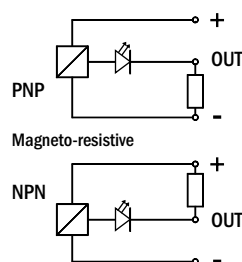


The accessories to fix the inductive sensors are supplied in the packaging.



The magnetic sensors from Gimatic are the codes:

SS4N225-G	PNP	2.5m cable
SS4M225-G	NPN	
SS3N203-G	PNP	M8 snap plug connector
SS3M203-G	NPN	



Spring option

It is also available, on request, with a closing (-NC) or opening (-NO) spring, providing, after a pressure black-out, about one fourth of the output force at 6 bar.

	MGX2005-NC	MGX2508-NC	MGX3210-NC	MGX3214-NC	MGX4015-NC	MGX5020-NC	MGX6030-NC
Closing force at 6 bar each jaw	114÷121 N	179÷195 N	285÷306 N	199÷213 N	467÷510 N	792÷871 N	1016÷1110 N
Opening force at 6 bar each jaw	59÷66 N	95÷111 N	154÷175 N	107÷122 N	240÷283 N	429÷508 N	550÷644 N
Closing force at 0 bar each jaw	24÷31 N	34÷50 N	55÷76 N	38÷53 N	92÷135 N	142÷221 N	186÷280 N
Opening force at 0 bar each jaw	0 N	0 N	0 N	0 N	0 N	0 N	0 N

	MGX2005-NO	MGX2508-NO	MGX3210-NO	MGX3214-NO	MGX4015-NO	MGX5020-NO	MGX6030-NO
Closing force at 6 bar each jaw	59÷66 N	95÷111 N	154÷175 N	107÷122 N	240÷283 N	429÷508 N	550÷644 N
Opening force at 6 bar each jaw	114÷121 N	179÷195 N	285÷306 N	199÷213 N	467÷510 N	792÷871 N	1016÷1110 N
Closing force at 0 bar each jaw	0 N	0 N	0 N	0 N	0 N	0 N	0 N
Opening force at 0 bar each jaw	24÷31 N	34÷50 N	55÷76 N	38÷53 N	92÷135 N	142÷221 N	186÷280 N

In the spring versions the maximum gripping tool length should be 20% shorter.
 In the spring versions the minimum operating pressure is 3.5bar.

