

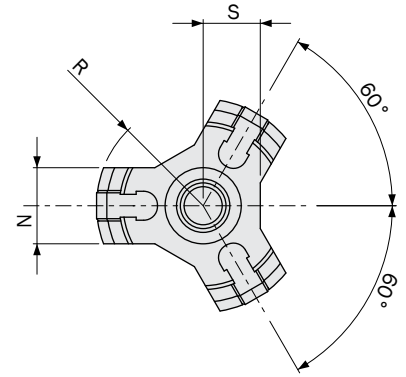
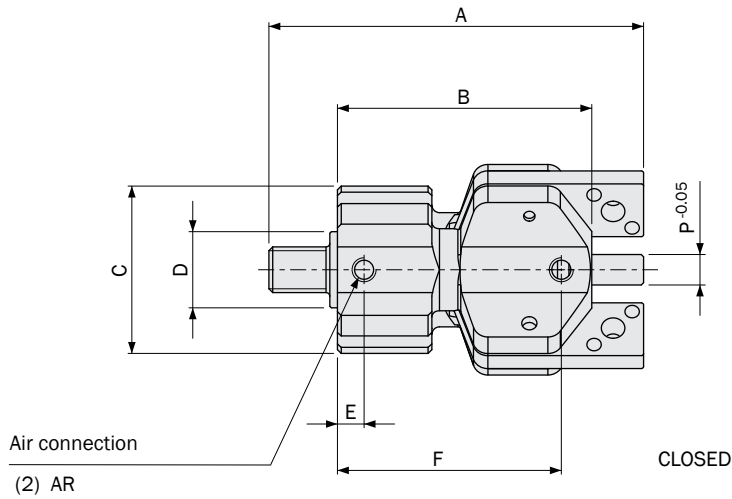
Self-centering angular pneumatic grippers

- Double acting.
- High efficiency and reliability due to the lack of driving parts.
- 2 or 3 jaws.
- Optional magnetic sensors.
- FDA-H1 food-grade grease.

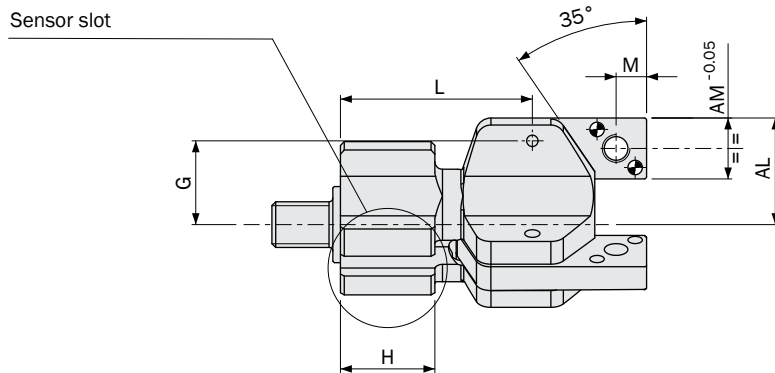


	PN-010-3	PN-010-2	PN-016-3	PN-016-2	PN-025-3	PN-025-2	PN-040-3	PN-040-2
Design	Self - centering angular motion gripper							
Medium	Compressed air in compliance with ISO 8573-1:2010 [7:4:4]							
Compressed air control range	2 ÷ 8 bar							
Stroke	3 x 19°	2 x 19°	3 x 19°	2 x 19°	3 x 19°	2 x 19°	3 x 19°	2 x 19°
Permitted temperature range	5 ÷ 60°C.							
Maximum gripper torque at 6 bar on each jaw	10 Ncm	15 Ncm	38 Ncm	57 Ncm	166 Ncm	249 Ncm	434 Ncm	651 Ncm
Total gripper torque at 6 bar	30 Ncm		114 Ncm		498 Ncm		1302 Ncm	
Closing time at 6 bar without load	0.02 s		0.03 s		0.06 s		0.1 s	
Maximum working frequency at 6 bar	3 Hz				2 Hz		1 Hz	
Air consumption for cycle at 6 bar	0.49 cm ³		2.61 cm ³		10.8 cm ³		41.1 cm ³	
Repetition accuracy	0.1°				0.1°			
Weight	36 g	33 g	110 g	100 g	410 g	960 g	1070 g	940 g

Dimensions (mm)

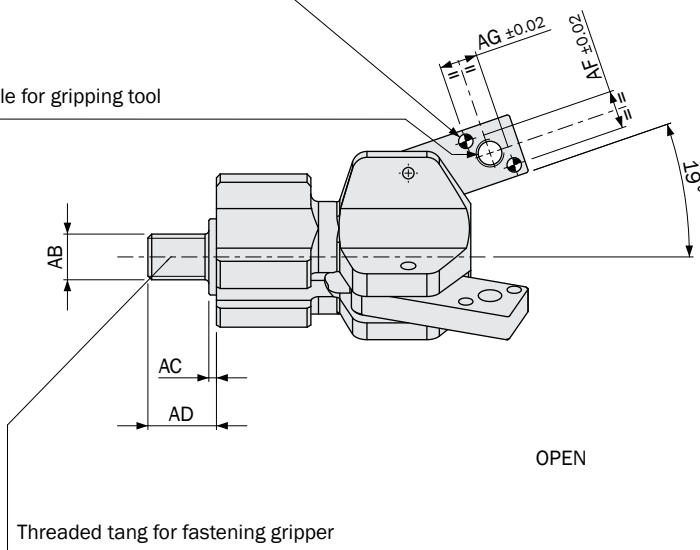


FIRST ANGLE PROJECTION



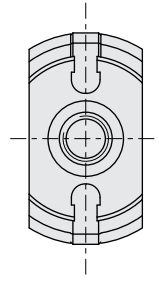
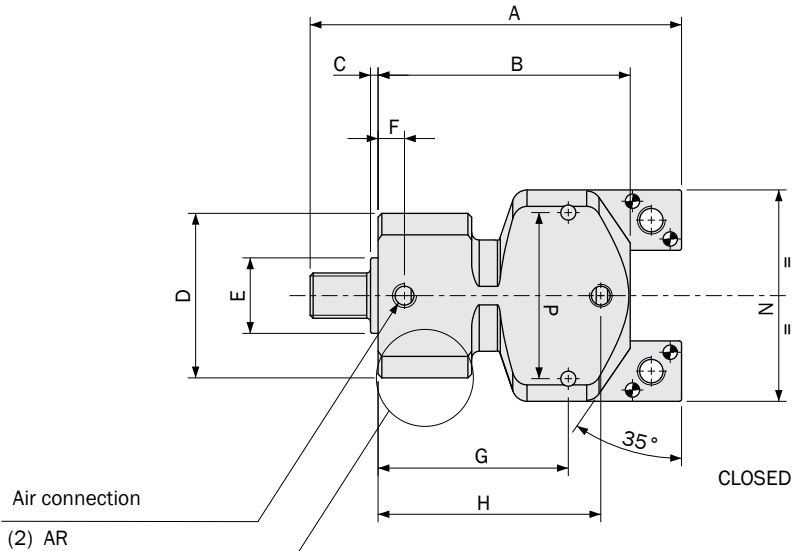
Dowel pin hole for gripping tool
(2+2+2) AT

Threaded hole for gripping tool
(1+1+1) AS

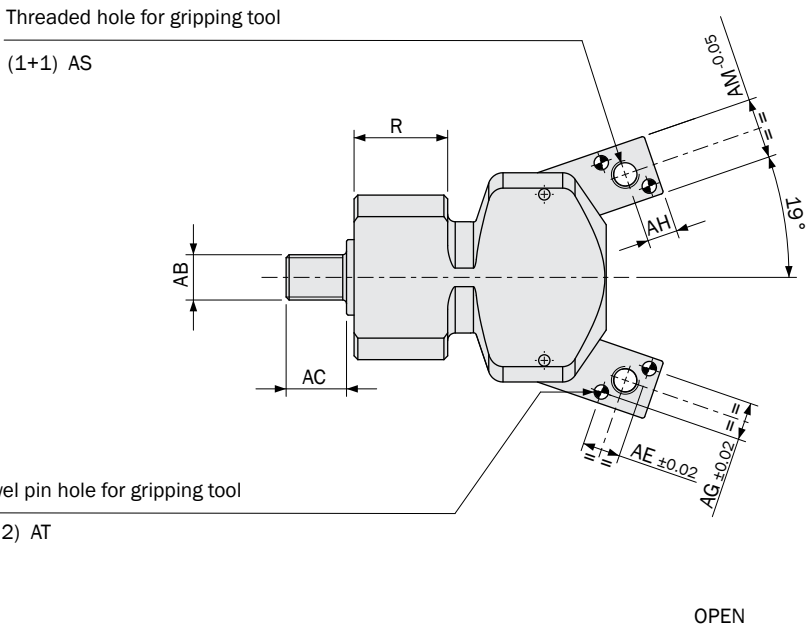
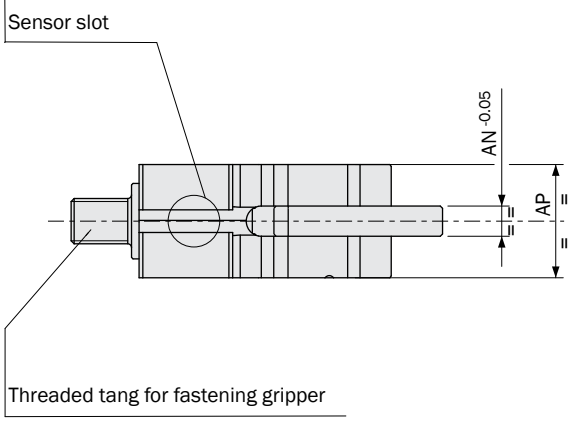


	PN-010-3	PN-016-3
A	49.2	70.5
B	33.4	48.2
C	Ø22	Ø28.8
D	Ø10 h8	Ø10 h8
E	3.5	4.5
F	29.4	41
G	11	17.5
H	12.4	19.5
L	25.2	36
M	4	5.5
N	10	15
P	4	6
R	Ø28	Ø44
S	7.5	11
AB	M6	M8
AC	1	1
AD	9	12.5
AF	5	8
AG	5	7
AL	14	22
AM	8	12
AR	M3	M5
AS	M3	M4
AT	Ø1.5 H8	Ø2 H8

Dimensions (mm)



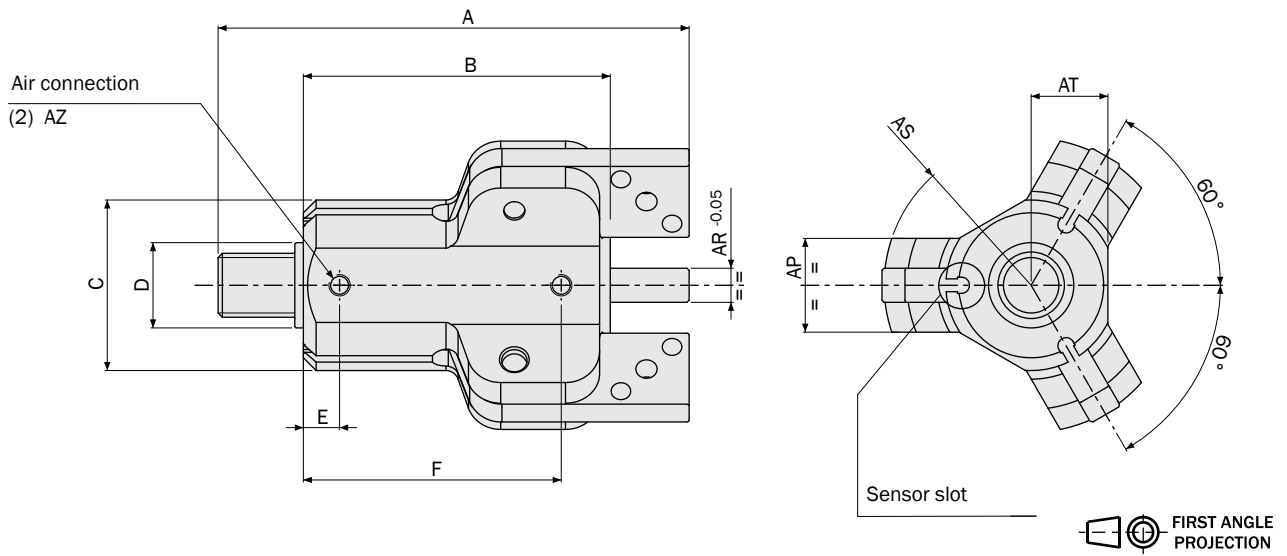
FIRST ANGLE PROJECTION



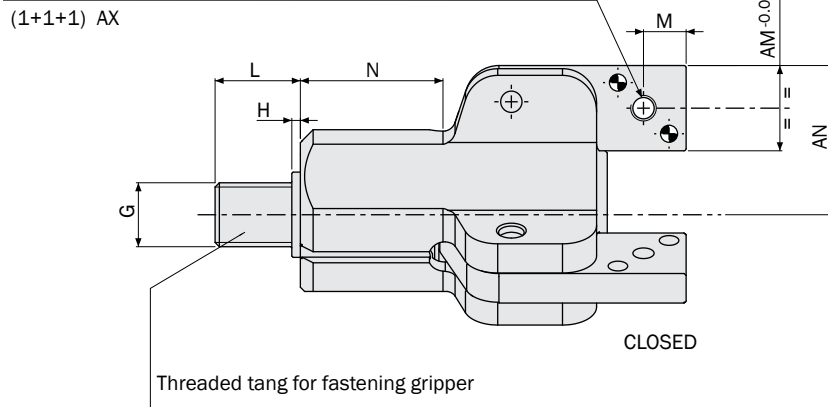
	PN-010-2	PN-016-2
A	49.2	70.5
B	33.4	48.2
C	1	1
D	Ø22	Ø28.8
E	Ø10 h8	Ø10 h8
F	3.5	4.5
G	25.2	36
H	29.5	41
N	28	44
P	22	35
R	12.4	19.5
AB	M6	M8
AC	8	11.5
AE	5	7
AG	5	8
AH	4	5.5
AM	8	12
AN	4	6
AP	15	22
AR	M3	M5
AS	M3	M4
AT	Ø1.5 H8	Ø2 H8
AV	Ø28	Ø44

Rotary Units
Quick Changer
Profiles and Brackets
Grippers
Linear Actuators
Suspensions
Nippers
Robot Kit
Options
Sensors

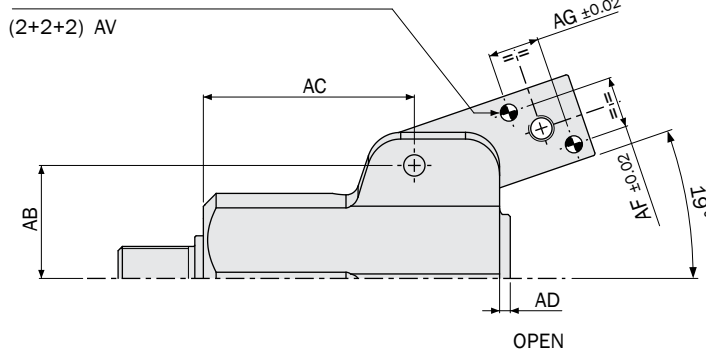
Dimensions (mm)



Threaded hole for gripping tool

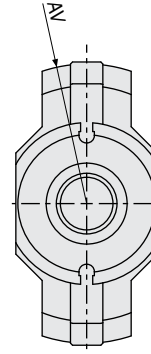
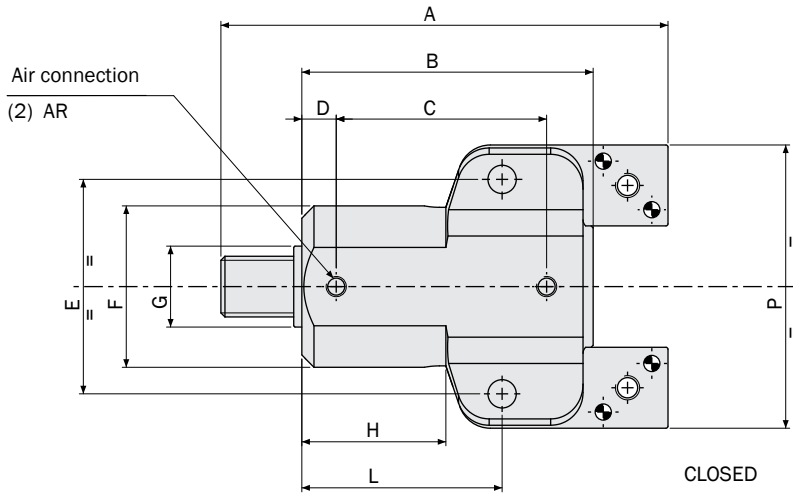


Dowel pin hole for gripping tool

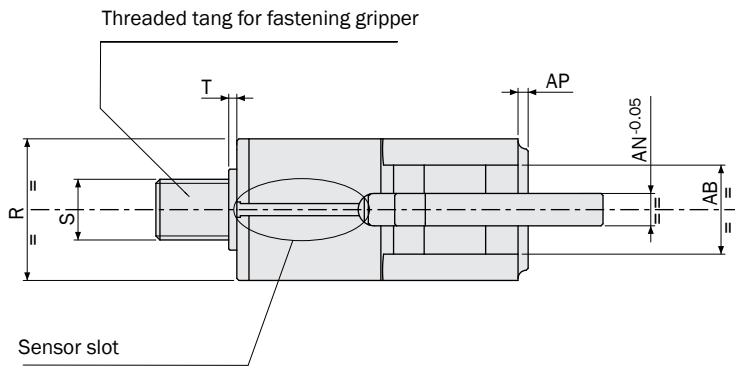


	PN-025-3	PN-040-3
A	110.5	150
B	72	102
C	Ø40	Ø60
D	Ø20 f7	Ø30 f7
E	8.5	12
F	60.5	85
G	M15x1	M20x1
H	2	3
L	20	28
M	10	12
N	33.5	44.2
AB	26.5	39.5
AC	49.5	74
AD	2.5	6.5
AF	12	15
AG	12	15
AM	20	24
AN	35	48.5
AP	22	25
AR	8	10
AS	Ø69	Ø97
AT	18	28
AV	Ø4 H8	Ø5 H8
AX	M6	M8
AZ	M5	1/8 Gas

Dimensions (mm)

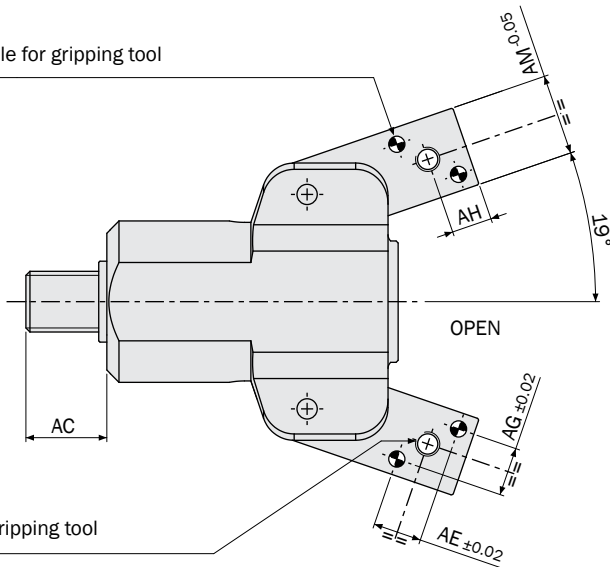


FIRST ANGLE PROJECTION



Dowel pin hole for gripping tool

(2+2) AS



Threaded hole for gripping tool

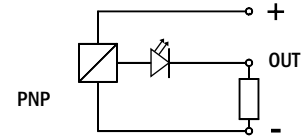
(1+1) AT

	PN-025-2	PN-040-2
A	110.5	150
B	72	102
C	52	73
D	8.5	12
E	53	79
F	Ø40	Ø60
G	Ø20 f7	Ø30 f7
H	35.6	44.2
L	49.5	74
P	70	97
R	35	56
S	M15x1	M20x1
T	2	3
AB	22	25
AC	20	28
AE	12	15
AG	12	19.5
AH	10	12
AM	20	24
AN	8	10
AP	2.5	6.5
AR	M5	1/8 Gas
AS	Ø4 H8	Ø5 H8
AT	M6	M8
AV	Ø69	Ø97

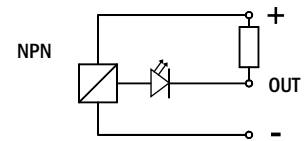
Sensors

The operating position is detected by proximity magnetic sensors, fitted in the guides of the gripper's body. These sensors detect the position by means of a magnet placed on the piston.

SN4N225-G	PNP	2.5m cable
SN4M225-G	NPN	
SN3N203-G	PNP	M8 snap plug connector
SN3M203-G	NPN	



Magneto-resistive



They are all provided with a 3-wire flat cable and a LED.

