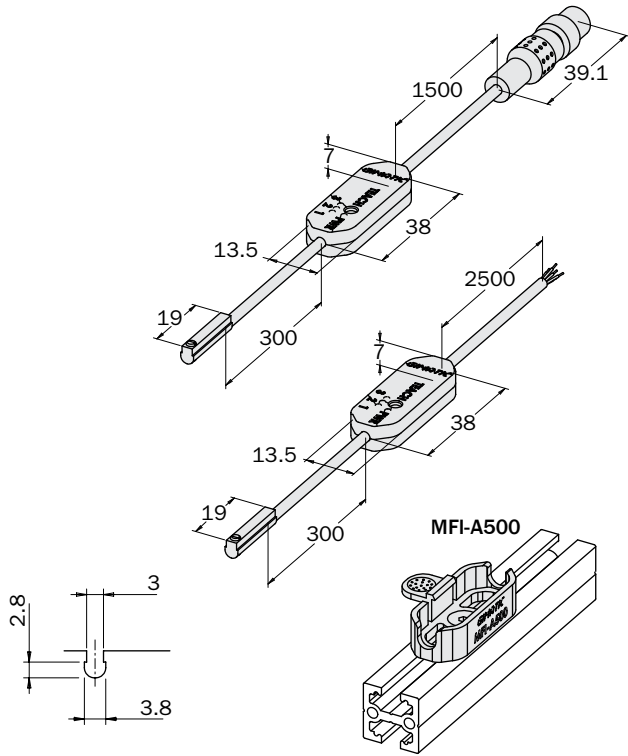


Programmable Pro SS magnetic sensors

- Programmable GMP sensors.
- 3 independent digital outputs.
- Each programmable output in NO or NC logic.
- Versions available with PNP or NPN outputs.
- Cable or M8 connector output.
- 100% traceability.
- Standard C-slot inline mounting.
- Optional K-SENS slot adaptors.
- Optional 2.5m, 5m and 10m cable extension.
- Axial mounting.
- MFI-A500 optional bracket for remote programming box.



Dimensions (mm)

Application examples



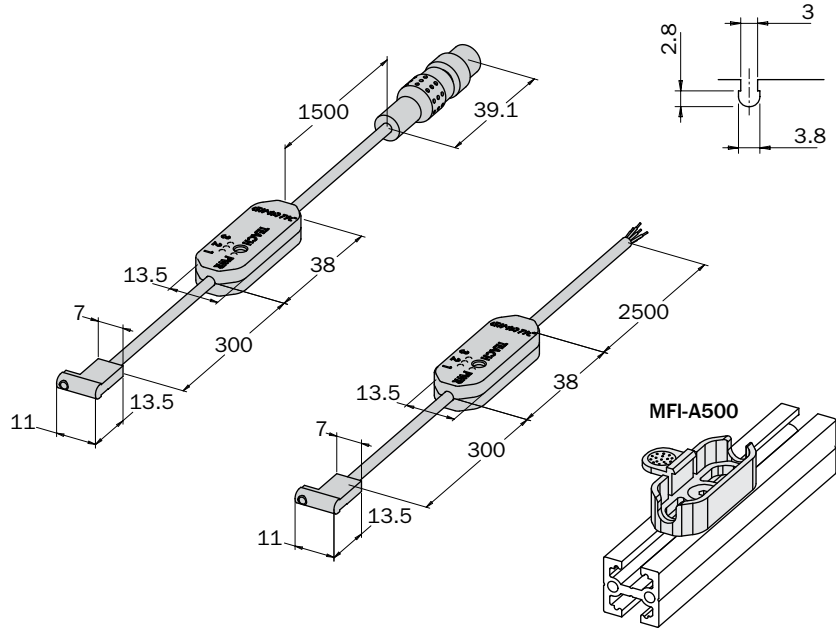
Sensor with cable	PRO-SS4N225-G	PRO-SS4M225-G
Sensor with M8 connector	PRO-SS3N215-G	PRO-SS3M215-G
Sensor type	Magneto-resistive PNP	Magneto-resistive NPN
No. of outputs	3 outputs (e.g. gripper open, closed, workpiece gripped)	
Outputs type	NO/NC independently configurable	
Maximum switching delay	50 ms	
Power supply	24 Vdc	
Operating range	10÷1300 Gauss	
Max. switching frequency	300 kHz	
Operating temperature	-10÷60 °C	
Reverse polarity protection	Yes	
Protection rating	IP 67	
Sensor body material	PA	
Standard cable length	2.5 m (flying cable) - 1.5 m (cable with M8 connector)	
Sheathing - insulation	POLYURETHANE FLAME-RETARDANT UL 92 V2	
Leads	0.08 mm ² / AWG 28	
CE reference standards	CEI EN 60529; CEI EN 60947-5-2; CEI EN 61000-6-2; CEI EN 61000-6-3; CEI EN 55022; CEI EN 61000-4-2; CEI EN 61000-4-3; CEI EN 61000-4-4; CEI EN 65000-4-5; CEI EN 61000-4-6; CEI EN 61000-4-8; CEI EN 61000-4-11	
Wiring diagrams		
Connections	<p>Brown (BN +); Blue (BU -); Black (BK OUT 1); White (WH OUT 2); Grey (GY OUT 3); Not connected N.C.</p>	

The sensor's remote programming circuit has a button for the configuration and programming of outputs. Following a simple procedure, the user can configure each output as normally open (NO – yellow LED) or normally closed (NC – green LED) and store the switching point (separate for each output). With this type of sensor the ideal position for the sensitive head is halfway along the actuator stroke.



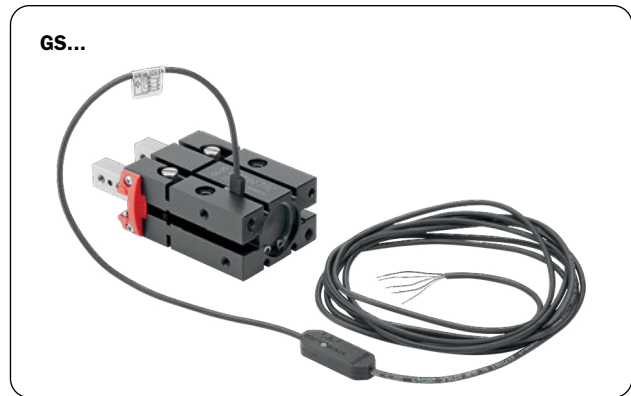
Programmable Pro SN magnetic sensors

- Programmable GMP magnetoresistive sensors.
- 3 independent digital outputs.
- Each programmable output in NO or NC logic.
- Versions available with PNP or NPN outputs.
- Cable or M8 connector output.
- 100% traceability.
- Standard C-slot inline mounting.
- Slot adaptors on request.
- Optional 2.5m, 5m and 10m cable extensions.
- Axial mounting.
- MFI-A500 optional bracket for remote programming box.



Dimensions (mm)

Application examples



Sensor with cable	PRO-SN4N225-G	PRO-SN4M225-G
Sensor with male M8 connector	PRO-SN3N215-G	PRO-SN3M215-G
Sensor type	Magneto-resistive PNP	Magneto-resistive NPN
No. of outputs	3 outputs (e.g. gripper open, closed, workpiece gripped)	
Outputs type	NO/NC independently configurable	
Maximum switching delay	50 ms	
Power supply	24 Vdc	
Nominal operating range	10÷1300 Gauss	
Max. switching frequency	300 kHz	
Operating temperature	-10÷60 °C	
Reverse polarity protection	Yes	
Protection rating	IP 67	
Sensor body material	PA; AISI 303	
Standard cable length	2.5 m (flying cable) - 1.5 m (cable with M8 connector)	
Sheathing - insulation	POLYURETHANE FLAME-RETARDANT UL 92 V2	
Leads	0,08 mm ² / AWG 28	
CE reference standards	CEI EN 60529; CEI EN 60947-5-2; CEI EN 61000-6-2; CEI EN 61000-6-3; CEI EN 55022; CEI EN 61000-4-2; CEI EN 61000-4-3; CEI EN 61000-4-4; CEI EN 65000-4-5; CEI EN 61000-4-6; CEI EN 61000-4-8; CEI EN 61000-4-11	
Wiring diagrams		
Connections	<p>Brown (BN +); Blue (BU -); Black (BK OUT1); White (WH OUT 2); Grey (GY OUT 3); Not connected N.C.</p>	

The sensor's remote programming circuit has a button for the configuration and programming of outputs. Following a simple procedure, the user can configure each output as normally open (NO – yellow LED) or normally closed (NC – green LED) and store the switching point (separate for each output). With this type of sensor the ideal position for the sensitive head is halfway along the actuator stroke.

